



STATE OF WASHINGTON
DEPARTMENT OF LICENSING
PO Box 9020 • Olympia, Washington 98507-9020

February 8, 2024

Washington State Drivers Report for January 2024

The monthly report provides a summary of Washington drivers' license (WDL) in-migration activity. Data cleaning/reclassification may have some impact to the report counts.

During the month of January 2024, 12,539 out-of-state drivers obtained a Washington driver license. This is 1,189 fewer than the 13,728 out-of-state drivers who obtained licenses in January of 2023. For the 12 months ending January 2024, 163,182 out-of-state drivers obtained a Washington driver license, a decrease over the same period a year ago by -8.7 percent.

The table below depicts WDL migration into Washington State featuring states that have historically been the top five in-migration states. Also depicted in the table below is a 12-month moving sum to provide an annual trend.

	Jan 2024			Year Ending Jan 2024		
	2024	2023	% Change	2024	2023	% Change
Total Drivers In	12,539	13,728	-8.7	163,182	178,782	-8.7
Weekly Average	3,135	3,432	-8.7	3,138	3,438	-8.7
California	2,220	2,552	-13.0	29,317	35,674	-17.8
Oregon	1,253	1,416	-11.5	16,951	18,528	-8.5
Texas	861	845	1.9	10,667	10,578	0.8
Arizona	524	546	-4.0	6,765	7,263	-6.9
Idaho	378	454	-16.7	5,333	5,879	-9.3

The graphs on page 2 show the 12-month moving sum of drivers moving into Washington, the percent change from a year ago, and the top five in-migration states.

The table on page 3 has the current month driver in-migration by state along with the same month a year ago showing the year-over-year (YOY) change as well as the percent change by state. The monthly detail report of driver migration totals by location moved from and by county moved to begins on page 4.

The WDL Reports are available online at <https://www.dol.wa.gov/about/driversreports.html>.



Alice Vogel | she, her, hers
Tax Policy Specialist
 Department of Licensing | [dol.wa.gov](https://www.dol.wa.gov)

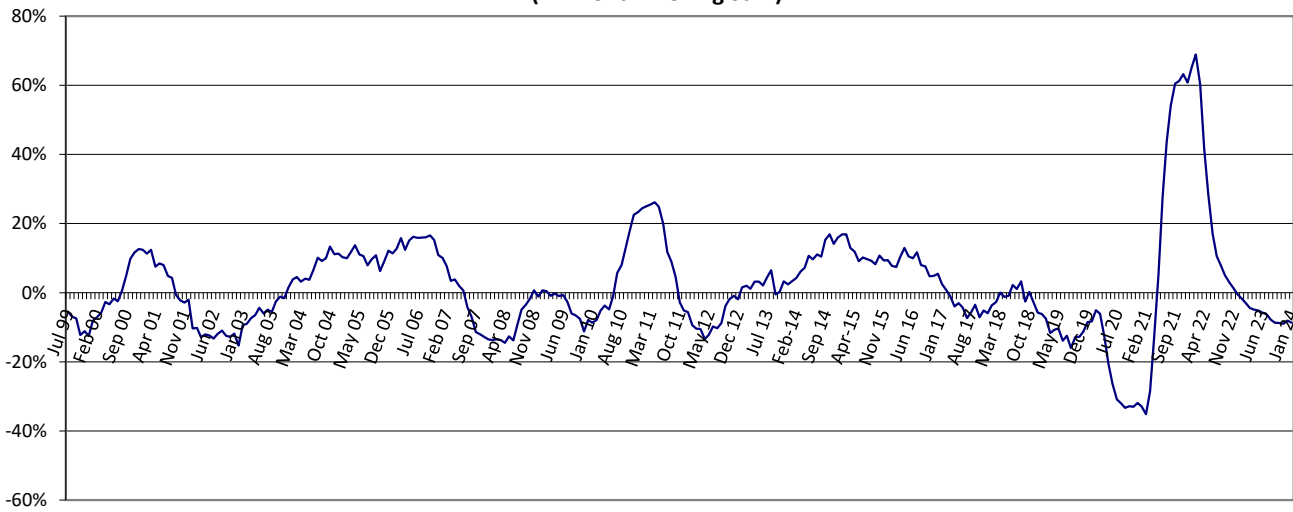
Helping every Washington resident live, work, drive, & thrive.

We are committed to providing equal access to our services.
 For more information, visit [dol.wa.gov/access](https://www.dol.wa.gov/access). (TDD/TTY call 711).

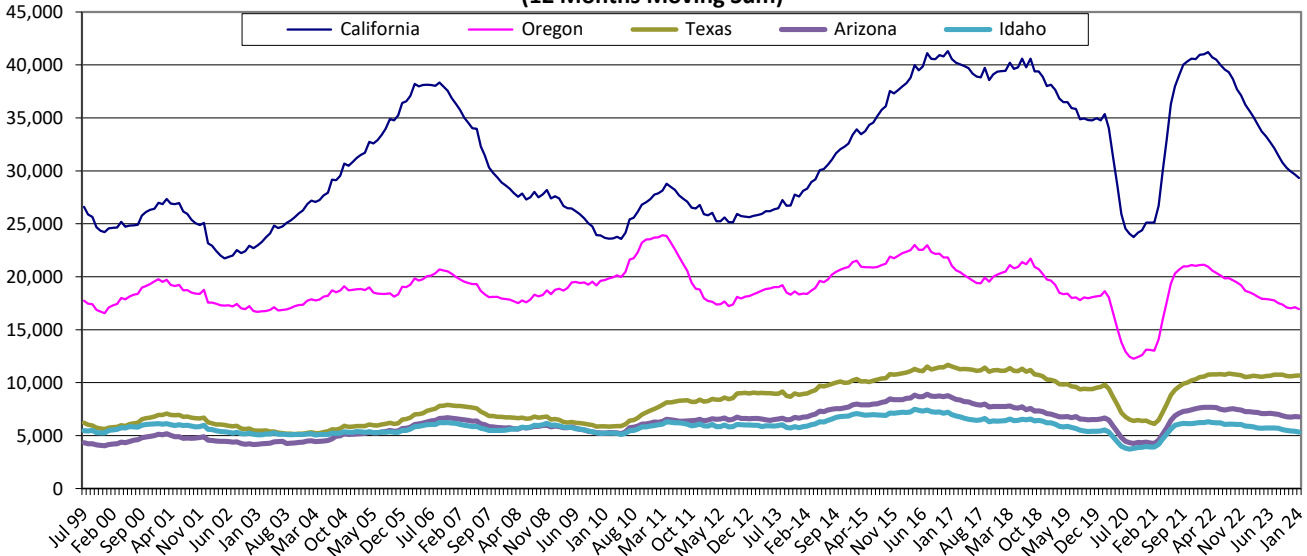
**Washington State Driver's Licenses
(12 Month Moving Sum)**



**% Change Year Ago
(12 Month Moving Sum)**



**Top Five In-Migration States
(12 Months Moving Sum)**



Driver In-Migration By State

Month: **January**

Number of Weeks	4	4		
State	2024	2023	YOY Change	% Change
ALABAMA	82	60	22	36.7%
ALASKA	130	168	(38)	-22.6%
ARIZONA	524	546	(22)	-4.0%
ARKANSAS	58	55	3	5.5%
CALIFORNIA	2,220	2,552	(332)	-13.0%
COLORADO	332	405	(73)	-18.0%
CONNECTICUT	35	57	(22)	-38.6%
DELAWARE	10	17	(7)	-41.2%
FLORIDA	592	541	51	9.4%
GEORGIA	215	265	(50)	-18.9%
HAWAII	171	188	(17)	-9.0%
IDAHO	378	454	(76)	-16.7%
ILLINOIS	224	253	(29)	-11.5%
INDIANA	105	104	1	1.0%
IOWA	45	78	(33)	-42.3%
KANSAS	62	77	(15)	-19.5%
KENTUCKY	48	40	8	20.0%
LOUISIANA	57	78	(21)	-26.9%
MAINE	20	31	(11)	-35.5%
MARYLAND	110	137	(27)	-19.7%
MASSACHUSETTS	119	165	(46)	-27.9%
MICHIGAN	145	148	(3)	-2.0%
MINNESOTA	120	130	(10)	-7.7%
MISSISSIPPI	24	31	(7)	-22.6%
MISSOURI	132	129	3	2.3%
MONTANA	158	173	(15)	-8.7%
NEBRASKA	31	37	(6)	-16.2%
NEVADA	252	274	(22)	-8.0%
NEW HAMPSHIRE	12	27	(15)	-55.6%
NEW JERSEY	118	118	0	0.0%
NEW MEXICO	100	101	(1)	-1.0%
NEW YORK	217	230	(13)	-5.7%
NORTH CAROLINA	187	200	(13)	-6.5%
NORTH DAKOTA	38	29	9	31.0%
OHIO	144	171	(27)	-15.8%
OKLAHOMA	56	86	(30)	-34.9%
OREGON	1,253	1,416	(163)	-11.5%
PENNSYLVANIA	167	167	0	0.0%
RHODE ISLAND	17	14	3	21.4%
SOUTH CAROLINA	97	84	13	15.5%
SOUTH DAKOTA	42	47	(5)	-10.6%
TENNESSEE	133	132	1	0.8%
TEXAS	861	845	16	1.9%
UTAH	201	226	(25)	-11.1%
VERMONT	20	15	5	33.3%
VIRGINIA	179	200	(21)	-10.5%
WASHINGTON	0	0	0	0.0%
WEST VIRGINIA	11	12	(1)	-8.3%
WISCONSIN	108	106	2	1.9%
WYOMING	41	50	(9)	-18.0%
WASH. DC	24	32	(8)	-25.0%
OUTSIDE U.S.	2,114	2,227	(113)	-5.1%
TOTAL	12,539	13,728	(1,189)	-8.7%

January 2024 Totals by Location Moved From, and By County Moved To

FROM / TO	TOTAL	GRAYS																			
		ADAMS	ASOTIN	BENTON	CHELAN	CLALLAM	CLARK	COLUMBIA	COWLITZ	DOUGLAS	FERRY	FRANKLIN	GARFIELD	GRANT	HARBOR	ISLAND	JEFFERSON	KING	KITSAP	KITTITAS	KLCKITAT
ALABAMA	82	0	0	0	0	0	4	0	0	0	0	0	0	0	0	0	26	6	0	1	
ALASKA	130	0	0	2	0	4	6	0	2	0	0	1	0	2	1	0	18	11	0	0	
ARIZONA	524	0	1	14	3	8	37	0	7	5	0	1	0	10	7	4	6	156	34	2	1
ARKANSAS	58	0	0	3	0	0	3	0	0	0	0	0	0	1	0	1	0	22	1	0	0
CALIFORNIA	2220	1	2	31	7	21	167	2	13	4	2	12	0	14	15	38	16	1033	92	6	0
COLORADO	332	0	1	7	1	7	25	0	6	1	0	1	0	0	2	5	2	124	13	2	4
CONNECTICUT	35	0	0	1	0	1	0	0	0	0	0	0	0	0	0	0	0	22	1	0	0
DELAWARE	10	0	0	2	0	0	0	0	0	0	0	0	0	1	0	0	0	1	1	0	0
FLORIDA	592	0	0	7	4	8	29	0	1	2	0	2	0	5	2	17	3	229	30	0	1
GEORGIA	215	0	0	8	0	1	7	0	0	0	0	2	0	0	0	7	2	88	14	0	0
HAWAII	171	0	0	5	1	1	18	0	3	0	0	2	0	0	1	4	0	47	10	0	0
IDAHO	378	1	23	13	4	6	18	0	4	1	0	5	0	0	5	4	1	47	10	3	1
ILLINOIS	224	0	0	0	0	4	6	0	2	0	0	0	0	0	1	0	2	117	4	2	0
INDIANA	105	0	0	1	0	0	7	0	1	0	0	0	0	0	0	1	0	45	3	2	0
IOWA	45	0	0	0	2	0	5	0	1	0	0	0	0	0	0	0	1	14	5	0	0
KANSAS	62	0	0	0	0	1	1	0	0	0	0	0	0	0	0	1	0	20	5	0	0
KENTUCKY	48	0	0	0	0	0	2	0	2	0	0	0	0	0	0	0	0	16	1	0	0
LOUISIANA	57	0	0	0	1	1	3	0	0	0	0	0	0	1	1	0	0	20	1	0	0
MAINE	20	0	0	0	0	0	2	0	0	0	0	0	0	0	0	0	0	13	1	0	0
MARYLAND	110	0	0	2	1	1	7	0	3	1	0	0	0	1	0	1	0	53	3	0	0
MASSACHUSETTS	119	0	0	1	0	0	3	0	0	1	0	0	0	0	0	1	0	74	5	0	1
MICHIGAN	145	0	0	5	0	0	5	0	1	0	0	0	0	2	0	1	0	76	2	0	0
MINNESOTA	120	0	0	1	0	0	6	0	0	0	0	2	0	0	2	0	1	62	1	0	0
MISSISSIPPI	24	0	0	0	0	1	1	0	1	0	0	0	0	0	0	0	0	7	0	0	0
MISSOURI	132	1	0	1	0	1	8	0	1	0	0	0	0	1	1	2	0	52	4	1	0
MONTANA	158	0	1	5	3	5	7	0	0	0	0	0	0	2	2	2	0	29	14	1	1
NEBRASKA	31	0	0	2	1	0	0	0	0	0	0	0	0	1	0	0	0	12	2	0	0
NEVADA	252	0	0	10	0	4	32	0	1	2	0	2	0	3	4	6	0	52	14	0	0
NEW HAMPSHIRE	12	0	0	0	0	0	0	0	0	0	0	0	0	0	0	1	0	3	1	0	0
NEW JERSEY	118	0	0	4	0	2	4	0	0	0	0	0	0	2	0	1	0	62	4	1	0
NEW MEXICO	100	0	0	6	1	5	7	0	0	0	0	0	0	3	1	3	1	23	2	0	1
NEW YORK	217	0	0	5	0	0	7	0	0	0	0	0	0	0	1	3	0	128	5	0	0
NORTH CAROLINA	187	0	0	1	1	0	10	0	0	0	0	0	0	0	1	3	2	72	8	0	0
NORTH DAKOTA	38	0	1	1	0	0	1	0	1	0	0	0	0	1	2	0	0	9	2	0	0
OHIO	144	0	0	4	0	1	6	0	1	0	0	0	0	0	0	1	0	66	7	0	1
OKLAHOMA	56	0	0	2	0	1	6	0	0	0	0	0	0	0	1	1	0	11	2	1	0
OREGON	1253	1	2	27	4	23	438	4	53	1	2	15	0	11	6	12	8	229	26	10	22
PENNSYLVANIA	167	0	0	3	2	1	7	0	0	0	0	1	0	1	1	3	0	89	9	0	1
RHODE ISLAND	17	0	0	0	0	0	2	0	0	0	0	0	0	0	0	1	0	8	2	0	0
SOUTH CAROLINA	97	0	0	1	0	2	5	0	1	0	1	0	0	1	0	2	0	18	13	0	0
SOUTH DAKOTA	42	0	0	1	0	0	4	0	0	0	0	1	0	0	1	1	0	9	2	0	0
TENNESSEE	133	0	0	3	1	1	8	0	1	0	0	0	0	0	0	0	0	40	3	0	1
TEXAS	861	2	0	13	5	4	41	0	4	8	0	3	0	8	11	18	1	325	40	5	3
UTAH	201	0	2	2	4	7	22	0	0	0	0	2	0	3	1	3	1	53	6	0	2
VERMONT	20	0	0	1	0	1	2	0	0	0	0	0	0	0	0	0	1	9	0	0	0
VIRGINIA	179	0	0	2	1	1	7	0	1	2	0	0	0	0	0	9	0	81	23	0	0
WASHINGTON	0	0	0	0	0	0	0	0	0	0	0	0	0	0	0	0	0	0	0	0	0
WEST VIRGINIA	11	0	0	0	0	0	0	0	0	0	0	0	0	0	0	0	0	4	1	0	0
WISCONSIN	108	0	0	1	0	0	2	0	0	3	0	0	0	0	1	2	1	54	4	0	1
WYOMING	41	1	0	1	0	0	7	0	0	0	0	0	0	1	1	1	3	7	3	0	0
DISTRICT OF COLUMBIA	24	0	0	0	0	0	2	0	0	0	0	0	0	0	0	0	0	17	0	0	0
AFGHANISTAN	4	0	0	0	0	0	1	0	0	0	0	0	0	0	0	0	0	3	0	0	0
ÅLAND ISLANDS	0	0	0	0	0	0	0	0	0	0	0	0	0	0	0	0	0	0	0	0	0
ALBANIA	0	0	0	0	0	0	0	0	0	0	0	0	0	0	0	0	0	0	0	0	0
ALGERIA	0	0	0	0	0	0	0	0	0	0	0	0	0	0	0	0	0	0	0	0	0
AMERICAN SAMOA	16	0	0	0	0	0	1	0	0	0	0	0	0	0	0	0	0	5	0	0	0

January 2024 Totals by Location Moved From, and By County Moved To

FROM / TO	TOTAL	GRAYS																			
		ADAMS	ASOTIN	BENTON	CHELAN	CLALLAM	CLARK	COLUMBIA	COWLITZ	DOUGLAS	FERRY	FRANKLIN	GARFIELD	GRANT	HARBOR	ISLAND	JEFFERSON	KING	KITSAP	KITTITAS	KLCKITAT
ANDORRA	0	0	0	0	0	0	0	0	0	0	0	0	0	0	0	0	0	0	0	0	0
ANGOLA	6	0	0	0	0	0	0	0	0	0	0	0	0	0	0	0	0	6	0	0	0
ANGUILLA	0	0	0	0	0	0	0	0	0	0	0	0	0	0	0	0	0	0	0	0	0
ANTARCTICA	0	0	0	0	0	0	0	0	0	0	0	0	0	0	0	0	0	0	0	0	0
ANTIGUA-BARBUDA	0	0	0	0	0	0	0	0	0	0	0	0	0	0	0	0	0	0	0	0	0
ARGENTINA	3	0	0	0	0	0	0	0	0	0	1	0	0	0	0	0	0	1	0	0	0
ARMENIA	0	0	0	0	0	0	0	0	0	0	0	0	0	0	0	0	0	0	0	0	0
ARUBA	0	0	0	0	0	0	0	0	0	0	0	0	0	0	0	0	0	0	0	0	0
AUSTRALIA	5	0	0	0	0	0	0	0	0	0	0	0	0	0	0	0	0	4	0	0	0
AUSTRIA	0	0	0	0	0	0	0	0	0	0	0	0	0	0	0	0	0	0	0	0	0
AZERBAIJAN	2	0	0	0	0	0	0	0	0	0	0	0	0	0	0	0	0	2	0	0	0
BAHAMAS	1	0	0	0	0	0	0	0	0	0	0	0	0	0	0	0	0	0	0	0	0
BAHRAIN	1	0	0	0	0	0	0	0	0	0	0	0	0	0	0	0	0	1	0	0	0
BANGLADESH	0	0	0	0	0	0	0	0	0	0	0	0	0	0	0	0	0	0	0	0	0
BARBADOS	0	0	0	0	0	0	0	0	0	0	0	0	0	0	0	0	0	0	0	0	0
BELARUS	7	0	0	0	0	0	2	0	0	0	0	0	0	0	0	0	0	3	0	0	0
BELGIUM	1	0	0	0	0	0	0	0	0	0	0	0	0	0	0	0	0	0	0	0	0
BELIZE	2	0	0	0	0	0	0	0	0	0	0	0	0	0	0	0	0	0	0	0	0
BENIN	0	0	0	0	0	0	0	0	0	0	0	0	0	0	0	0	0	0	0	0	0
BERMUDA	0	0	0	0	0	0	0	0	0	0	0	0	0	0	0	0	0	0	0	0	0
BHUTAN	0	0	0	0	0	0	0	0	0	0	0	0	0	0	0	0	0	0	0	0	0
BOLIVIA	2	0	0	0	0	0	0	0	0	0	0	0	0	0	0	0	0	2	0	0	0
BONAIRE, SINT EUSTATIUS & SABA	0	0	0	0	0	0	0	0	0	0	0	0	0	0	0	0	0	0	0	0	0
BOSNIA AND HERZEGOVINA	0	0	0	0	0	0	0	0	0	0	0	0	0	0	0	0	0	0	0	0	0
BOTSWANA	3	0	0	0	0	0	0	0	0	0	0	0	0	0	0	0	0	2	0	0	0
BOUVET ISLAND	0	0	0	0	0	0	0	0	0	0	0	0	0	0	0	0	0	0	0	0	0
BRAZIL	31	0	0	0	1	0	1	0	0	0	0	0	0	0	0	0	0	17	1	0	0
BRITISH INDIAN OCEAN TERRITORY	0	0	0	0	0	0	0	0	0	0	0	0	0	0	0	0	0	0	0	0	0
BRUNEI DARUSSALAM	0	0	0	0	0	0	0	0	0	0	0	0	0	0	0	0	0	0	0	0	0
BULGARIA	0	0	0	0	0	0	0	0	0	0	0	0	0	0	0	0	0	0	0	0	0
BURKINA FASO	2	0	0	0	0	0	0	0	0	0	0	0	0	0	0	0	0	1	0	0	0
BURUNDI	0	0	0	0	0	0	0	0	0	0	0	0	0	0	0	0	0	0	0	0	0
CAMBODIA	0	0	0	0	0	0	0	0	0	0	0	0	0	0	0	0	0	0	0	0	0
CAMEROON	0	0	0	0	0	0	0	0	0	0	0	0	0	0	0	0	0	0	0	0	0
CANADA	205	0	0	2	0	1	1	0	1	0	0	0	0	1	1	0	0	142	0	1	0
CAPE VERDE	0	0	0	0	0	0	0	0	0	0	0	0	0	0	0	0	0	0	0	0	0
CAYMAN ISLANDS	1	0	0	0	0	0	0	0	0	0	0	0	0	0	0	0	0	0	0	0	0
CENTRAL AFRICAN REPUBLIC	0	0	0	0	0	0	0	0	0	0	0	0	0	0	0	0	0	0	0	0	0
CHAD	0	0	0	0	0	0	0	0	0	0	0	0	0	0	0	0	0	0	0	0	0
CHILE	6	0	0	0	0	0	0	0	0	0	0	0	0	0	0	0	0	2	0	0	0
CHINA	80	0	0	0	0	1	0	0	0	0	0	0	0	0	0	0	0	61	0	0	0
CHRISTMAS ISLAND	0	0	0	0	0	0	0	0	0	0	0	0	0	0	0	0	0	0	0	0	0
COCOS (KEELING) ISLANDS	0	0	0	0	0	0	0	0	0	0	0	0	0	0	0	0	0	0	0	0	0
COLOMBIA	116	0	0	1	0	0	4	0	0	0	0	0	0	0	0	0	0	46	2	0	0
COMOROS	0	0	0	0	0	0	0	0	0	0	0	0	0	0	0	0	0	0	0	0	0
CONGO	1	0	0	0	0	0	0	0	0	0	0	0	0	0	0	0	0	1	0	0	0
CONGO, THE DEMOCRATIC REPUBLIC	2	0	0	0	0	0	0	0	0	0	0	0	0	0	0	0	0	2	0	0	0
COOK ISLANDS	0	0	0	0	0	0	0	0	0	0	0	0	0	0	0	0	0	0	0	0	0
COSTA RICA	3	0	0	0	0	0	0	0	0	0	0	0	0	0	0	0	0	0	0	0	0
CÔTE D'IVOIRE	0	0	0	0	0	0	0	0	0	0	0	0	0	0	0	0	0	0	0	0	0
CROATIA	0	0	0	0	0	0	0	0	0	0	0	0	0	0	0	0	0	0	0	0	0
CUBA	4	0	0	0	0	0	0	0	0	0	1	0	0	0	0	0	0	2	0	0	0
CURAÇAO	0	0	0	0	0	0	0	0	0	0	0	0	0	0	0	0	0	0	0	0	0
CYPRUS	1	0	0	0	0	0	0	0	0	0	0	0	0	0	0	0	0	1	0	0	0
CZECH REPUBLIC	0	0	0	0	0	0	0	0	0	0	0	0	0	0	0	0	0	0	0	0	0
DENMARK	0	0	0	0	0	0	0	0	0	0	0	0	0	0	0	0	0	0	0	0	0
DJIBOUTI	1	0	0	0	0	0	0	0	0	0	0	0	0	0	0	0	0	1	0	0	0
DOMINICA	1	0	0	0	0	0	0	0	0	0	0	0	0	0	0	0	0	1	0	0	0

January 2024 Totals by Location Moved From, and By County Moved To

FROM / TO	TOTAL	GRAYS																			
		ADAMS	ASOTIN	BENTON	CHELAN	CLALLAM	CLARK	COLUMBIA	COWLITZ	DOUGLAS	FERRY	FRANKLIN	GARFIELD	GRANT	HARBOR	ISLAND	JEFFERSON	KING	KITSAP	KITTITAS	KLCKITAT
DOMINICAN REPUBLIC	2	0	0	0	0	0	0	0	0	0	0	0	0	0	0	0	0	2	0	0	0
ECUADOR	25	0	0	0	0	0	2	0	0	0	0	0	0	0	1	0	0	12	0	0	0
EGYPT	3	0	0	0	0	0	0	0	0	0	0	0	0	0	0	0	0	3	0	0	0
EL SALVADOR	26	0	0	0	0	0	0	0	0	0	0	0	0	2	1	0	0	14	1	0	0
ENGLAND	1	0	0	0	0	0	0	0	0	0	0	0	0	0	0	0	0	1	0	0	0
EQUATORIAL GUINEA	0	0	0	0	0	0	0	0	0	0	0	0	0	0	0	0	0	0	0	0	0
ERITREA	10	0	0	0	0	0	0	0	0	0	0	0	0	0	0	0	0	7	0	0	0
ESTONIA	0	0	0	0	0	0	0	0	0	0	0	0	0	0	0	0	0	0	0	0	0
ESWATINI (prev. SWAZILAND)	0	0	0	0	0	0	0	0	0	0	0	0	0	0	0	0	0	0	0	0	0
ETHIOPIA	1	0	0	0	0	0	0	0	0	0	0	0	0	0	0	0	0	1	0	0	0
FALKLAND ISLANDS (MALVINAS)	0	0	0	0	0	0	0	0	0	0	0	0	0	0	0	0	0	0	0	0	0
FAROE ISLANDS	0	0	0	0	0	0	0	0	0	0	0	0	0	0	0	0	0	0	0	0	0
FEDERATED STATES OF MICRONESIA	5	0	0	0	0	0	1	0	0	0	0	0	0	0	0	0	0	1	1	0	0
FIJI	1	0	0	0	0	0	0	0	0	0	0	0	0	0	0	0	0	1	0	0	0
FINLAND	1	0	0	0	0	0	0	0	0	0	0	0	0	0	0	0	0	0	0	0	0
FRANCE	5	0	0	0	0	0	0	0	0	0	0	0	0	0	0	0	0	3	1	0	0
FRENCH GUIANA	0	0	0	0	0	0	0	0	0	0	0	0	0	0	0	0	0	0	0	0	0
FRENCH POLYNESIA	0	0	0	0	0	0	0	0	0	0	0	0	0	0	0	0	0	0	0	0	0
FRENCH SOUTHERN TERRITORIES	0	0	0	0	0	0	0	0	0	0	0	0	0	0	0	0	0	0	0	0	0
GABON	0	0	0	0	0	0	0	0	0	0	0	0	0	0	0	0	0	0	0	0	0
GAMBIA	5	0	0	0	0	0	0	0	0	0	0	0	0	0	0	0	0	4	0	0	0
GEORGIA (Country)	1	0	0	0	0	0	1	0	0	0	0	0	0	0	0	0	0	0	0	0	0
GERMANY	33	0	0	0	0	0	2	0	0	0	0	0	4	0	0	0	0	16	0	0	0
GHANA	4	0	0	0	0	0	0	0	0	0	0	0	0	0	0	0	0	3	0	0	0
GIBRALTAR	0	0	0	0	0	0	0	0	0	0	0	0	0	0	0	0	0	0	0	0	0
GREECE	0	0	0	0	0	0	0	0	0	0	0	0	0	0	0	0	0	0	0	0	0
GREENLAND	0	0	0	0	0	0	0	0	0	0	0	0	0	0	0	0	0	0	0	0	0
GRENADA	0	0	0	0	0	0	0	0	0	0	0	0	0	0	0	0	0	0	0	0	0
GUADELOUPE	0	0	0	0	0	0	0	0	0	0	0	0	0	0	0	0	0	0	0	0	0
GUAM	32	0	0	0	0	0	0	0	0	0	0	0	0	0	1	0	0	7	8	0	0
GUATEMALA	30	0	0	0	1	0	3	0	0	0	0	1	0	0	0	0	0	10	2	0	0
GUERNSEY	0	0	0	0	0	0	0	0	0	0	0	0	0	0	0	0	0	0	0	0	0
GUINEA	17	0	0	0	0	0	1	0	0	0	0	0	0	0	0	0	0	15	0	0	0
GUINEA-BISSAU	0	0	0	0	0	0	0	0	0	0	0	0	0	0	0	0	0	0	0	0	0
GUYANA	0	0	0	0	0	0	0	0	0	0	0	0	0	0	0	0	0	0	0	0	0
HAITI	10	0	0	0	0	0	0	0	0	0	0	0	0	0	0	0	0	6	0	0	0
HEARD ISLAND-MCDONALD ISLANDS	0	0	0	0	0	0	0	0	0	0	0	0	0	0	0	0	0	0	0	0	0
HOLY SEE (VATICAN CITY STATE)	0	0	0	0	0	0	0	0	0	0	0	0	0	0	0	0	0	0	0	0	0
HONDURAS	13	0	0	0	0	0	2	0	0	0	0	0	0	0	0	0	0	6	1	0	0
HONG KONG	1	0	0	0	0	0	0	0	0	0	0	0	0	0	0	0	0	1	0	0	0
HUNGARY	3	0	0	0	0	0	0	0	0	0	0	0	0	1	0	0	0	2	0	0	0
ICELAND	0	0	0	0	0	0	0	0	0	0	0	0	0	0	0	0	0	0	0	0	0
INDIA	106	0	0	0	0	0	4	0	0	0	0	0	0	0	0	0	1	80	0	0	0
INDONESIA	8	0	0	0	0	0	2	0	0	0	0	0	0	0	0	0	0	4	0	0	0
IRAN	0	0	0	0	0	0	0	0	0	0	0	0	0	0	0	0	0	0	0	0	0
IRAQ	0	0	0	0	0	0	0	0	0	0	0	0	0	0	0	0	0	0	0	0	0
IRELAND	2	0	0	0	0	0	0	0	0	0	0	0	0	0	0	0	0	1	0	0	0
ISLE OF MAN	0	0	0	0	0	0	0	0	0	0	0	0	0	0	0	0	0	0	0	0	0
ISRAEL	12	0	0	0	0	0	0	0	0	0	0	0	0	0	0	0	0	8	0	0	0
ITALY	1	0	0	0	0	0	0	0	0	0	0	0	0	0	0	0	0	0	0	0	0
JAMAICA	12	0	0	0	0	0	0	0	0	0	0	0	0	0	0	0	0	3	0	0	0
JAPAN	38	0	0	0	0	0	1	0	1	0	0	0	0	0	0	0	0	24	1	0	0
JERSEY	0	0	0	0	0	0	0	0	0	0	0	0	0	0	0	0	0	0	0	0	0
JORDAN	4	0	0	0	0	0	0	0	0	0	0	0	0	0	0	0	0	2	0	0	0
KAZAKHSTAN	19	0	0	0	0	0	0	0	0	0	0	0	0	0	0	0	0	16	0	0	0
KENYA	19	0	0	0	0	0	0	0	0	0	0	0	0	0	0	0	0	13	0	0	0
KIRIBATI	0	0	0	0	0	0	0	0	0	0	0	0	0	0	0	0	0	0	0	0	0
KUWAIT	1	0	0	0	0	0	0	0	0	0	0	0	0	0	0	0	0	0	0	0	0

January 2024 Totals by Location Moved From, and By County Moved To

FROM / TO	TOTAL	GRAYS																			
		ADAMS	ASOTIN	BENTON	CHELAN	CLALLAM	CLARK	COLUMBIA	COWLITZ	DOUGLAS	FERRY	FRANKLIN	GARFIELD	GRANT	HARBOR	ISLAND	JEFFERSON	KING	KITSAP	KITTITAS	KLCKITAT
KYRGYZSTAN	81	0	0	0	0	0	0	0	0	0	0	0	0	0	0	0	0	66	0	1	0
LAOS	1	0	0	0	0	0	0	0	0	0	0	0	0	0	0	0	0	1	0	0	0
LATVIA	1	0	0	0	0	0	0	0	0	0	0	0	0	0	0	0	0	1	0	0	0
LEBANON	1	0	0	0	0	0	0	0	0	0	0	0	0	0	0	0	0	1	0	0	0
LESOTHO	0	0	0	0	0	0	0	0	0	0	0	0	0	0	0	0	0	0	0	0	0
LIBERIA	0	0	0	0	0	0	0	0	0	0	0	0	0	0	0	0	0	0	0	0	0
LIBYA	0	0	0	0	0	0	0	0	0	0	0	0	0	0	0	0	0	0	0	0	0
LIECHTENSTEIN	0	0	0	0	0	0	0	0	0	0	0	0	0	0	0	0	0	0	0	0	0
LITHUANIA	1	0	0	0	0	0	0	0	0	0	0	0	0	0	0	0	0	1	0	0	0
LUXEMBOURG	0	0	0	0	0	0	0	0	0	0	0	0	0	0	0	0	0	0	0	0	0
MACAU	0	0	0	0	0	0	0	0	0	0	0	0	0	0	0	0	0	0	0	0	0
MACEDONIA	0	0	0	0	0	0	0	0	0	0	0	0	0	0	0	0	0	0	0	0	0
MADAGASCAR	0	0	0	0	0	0	0	0	0	0	0	0	0	0	0	0	0	0	0	0	0
MALAWI	12	0	0	0	0	0	0	0	0	0	0	0	0	0	0	0	0	4	0	0	0
MALAYSIA	0	0	0	0	0	0	0	0	0	0	0	0	0	0	0	0	0	0	0	0	0
MALDIVES	0	0	0	0	0	0	0	0	0	0	0	0	0	0	0	0	0	0	0	0	0
MALI	1	0	0	0	0	0	0	0	0	0	0	0	0	0	0	0	0	1	0	0	0
MALTA	0	0	0	0	0	0	0	0	0	0	0	0	0	0	0	0	0	0	0	0	0
MARSHALL ISLANDS	8	0	0	0	0	0	0	0	0	0	0	0	0	0	0	0	0	1	1	0	0
MARTINIQUE	0	0	0	0	0	0	0	0	0	0	0	0	0	0	0	0	0	0	0	0	0
MAURITANIA	4	0	0	0	0	0	0	0	0	0	0	0	0	0	0	0	0	2	0	0	0
MAURITIUS	0	0	0	0	0	0	0	0	0	0	0	0	0	0	0	0	0	0	0	0	0
MAYOTTE ISLAND	0	0	0	0	0	0	0	0	0	0	0	0	0	0	0	0	0	0	0	0	0
MEXICO	206	2	0	6	7	0	13	0	1	2	0	10	0	10	1	2	1	62	1	1	0
MONACO	0	0	0	0	0	0	0	0	0	0	0	0	0	0	0	0	0	0	0	0	0
MONGOLIA	2	0	0	0	0	0	0	0	0	0	0	0	0	0	0	0	0	1	0	0	0
MONTENEGRO	0	0	0	0	0	0	0	0	0	0	0	0	0	0	0	0	0	0	0	0	0
MONTSERRAT	0	0	0	0	0	0	0	0	0	0	0	0	0	0	0	0	0	0	0	0	0
MOROCCO	0	0	0	0	0	0	0	0	0	0	0	0	0	0	0	0	0	0	0	0	0
MOZAMBIQUE	1	0	0	0	0	0	0	0	0	0	0	0	0	0	0	0	0	0	0	0	0
MYANMAR	3	0	0	0	0	0	0	0	0	0	0	0	0	0	0	0	0	3	0	0	0
NAMIBIA	0	0	0	0	0	0	0	0	0	0	0	0	0	0	0	0	0	0	0	0	0
NAURU	0	0	0	0	0	0	0	0	0	0	0	0	0	0	0	0	0	0	0	0	0
NEPAL	0	0	0	0	0	0	0	0	0	0	0	0	0	0	0	0	0	0	0	0	0
NETHERLANDS	1	0	0	0	0	0	0	0	0	0	0	0	0	0	0	0	0	0	0	0	0
NEW CALEDONIA	0	0	0	0	0	0	0	0	0	0	0	0	0	0	0	0	0	0	0	0	0
NEW ZEALAND	0	0	0	0	0	0	0	0	0	0	0	0	0	0	0	0	0	0	0	0	0
NICARAGUA	16	0	0	2	0	0	0	0	1	0	0	0	0	0	0	0	0	6	0	0	0
NIGER	0	0	0	0	0	0	0	0	0	0	0	0	0	0	0	0	0	0	0	0	0
NIGERIA	3	0	0	0	0	0	0	0	0	0	0	0	0	0	0	0	0	2	0	0	0
NIUE	0	0	0	0	0	0	0	0	0	0	0	0	0	0	0	0	0	0	0	0	0
NORFOLK ISLAND	0	0	0	0	0	0	0	0	0	0	0	0	0	0	0	0	0	0	0	0	0
NORTH KOREA	0	0	0	0	0	0	0	0	0	0	0	0	0	0	0	0	0	0	0	0	0
NORTHERN IRELAND	0	0	0	0	0	0	0	0	0	0	0	0	0	0	0	0	0	0	0	0	0
NORTHERN MARIANA ISLANDS	10	0	0	0	0	0	1	0	1	0	0	0	0	0	0	0	0	2	0	0	0
NORWAY	0	0	0	0	0	0	0	0	0	0	0	0	0	0	0	0	0	0	0	0	0
OCCUPIED PALESTINIAN TERRITORY	0	0	0	0	0	0	0	0	0	0	0	0	0	0	0	0	0	0	0	0	0
OMAN	0	0	0	0	0	0	0	0	0	0	0	0	0	0	0	0	0	0	0	0	0
PAKISTAN	2	0	0	0	0	0	0	0	0	0	0	0	0	0	0	0	0	0	0	0	0
PALAU	0	0	0	0	0	0	0	0	0	0	0	0	0	0	0	0	0	0	0	0	0
PANAMA	0	0	0	0	0	0	0	0	0	0	0	0	0	0	0	0	0	0	0	0	0
PAPUA NEW GUINEA	0	0	0	0	0	0	0	0	0	0	0	0	0	0	0	0	0	0	0	0	0
PARAGUAY	0	0	0	0	0	0	0	0	0	0	0	0	0	0	0	0	0	0	0	0	0
PERU	10	0	0	0	0	0	1	0	0	0	0	1	0	0	0	0	0	4	0	0	0
PHILIPPINES	13	0	0	0	0	0	1	0	0	0	0	0	0	0	0	1	1	3	1	0	0
PITCAIRN	0	0	0	0	0	0	0	0	0	0	0	0	0	0	0	0	0	0	0	0	0
POLAND	1	0	0	0	0	0	0	0	0	0	0	0	0	0	0	0	0	1	0	0	0
PORTUGAL	0	0	0	0	0	0	0	0	0	0	0	0	0	0	0	0	0	0	0	0	0

January 2024 Totals by Location Moved From, and By County Moved To

FROM / TO	TOTAL	GRAYS																			
		ADAMS	ASOTIN	BENTON	CHELAN	CLALLAM	CLARK	COLUMBIA	COWLITZ	DOUGLAS	FERRY	FRANKLIN	GARFIELD	GRANT	HARBOR	ISLAND	JEFFERSON	KING	KITSAP	KITTITAS	KLCKITAT
PUERTO RICO	23	0	0	0	0	0	2	0	0	0	0	0	0	0	0	0	0	9	4	0	0
QATAR	0	0	0	0	0	0	0	0	0	0	0	0	0	0	0	0	0	0	0	0	0
REPUBLIC OF KOSOVO	0	0	0	0	0	0	0	0	0	0	0	0	0	0	0	0	0	0	0	0	0
REPUBLIC OF MOLDOVA	6	0	0	0	0	0	0	0	0	0	0	0	0	0	0	0	0	2	0	0	0
RÉUNION ISLAND	0	0	0	0	0	0	0	0	0	0	0	0	0	0	0	0	0	0	0	0	0
ROMANIA	19	0	0	0	0	0	4	0	0	0	0	0	0	0	0	0	0	10	0	0	0
RUSSIA	68	0	0	0	0	0	9	0	0	0	0	0	0	0	0	0	0	41	1	0	0
RWANDA	0	0	0	0	0	0	0	0	0	0	0	0	0	0	0	0	0	0	0	0	0
SAMOA	0	0	0	0	0	0	0	0	0	0	0	0	0	0	0	0	0	0	0	0	0
SAN MARINO	0	0	0	0	0	0	0	0	0	0	0	0	0	0	0	0	0	0	0	0	0
SAO TOME AND PRINCIPE	0	0	0	0	0	0	0	0	0	0	0	0	0	0	0	0	0	0	0	0	0
SAUDI ARABIA	2	0	0	0	0	0	0	0	0	0	0	0	0	0	0	1	0	0	0	0	0
SCOTLAND	0	0	0	0	0	0	0	0	0	0	0	0	0	0	0	0	0	0	0	0	0
SENEGAL	15	0	0	0	0	0	0	0	0	0	0	0	0	0	0	0	0	13	0	0	0
SERBIA	4	0	0	0	0	0	0	0	0	0	0	0	0	0	1	0	0	1	0	0	0
SEYCHELLES	0	0	0	0	0	0	0	0	0	0	0	0	0	0	0	0	0	0	0	0	0
SIERRA LEONE	1	0	0	0	0	0	0	0	0	0	0	0	0	0	0	0	0	0	0	0	0
SINGAPORE	5	0	0	0	0	0	2	0	0	0	0	0	0	0	0	0	0	3	0	0	0
SINT MAARTEN	0	0	0	0	0	0	0	0	0	0	0	0	0	0	0	0	0	0	0	0	0
SLOVAKIA	1	0	0	0	0	0	0	0	0	0	0	0	0	0	0	0	0	0	0	0	0
SLOVENIA	0	0	0	0	0	0	0	0	0	0	0	0	0	0	0	0	0	0	0	0	0
SOLOMON ISLANDS	0	0	0	0	0	0	0	0	0	0	0	0	0	0	0	0	0	0	0	0	0
SOMALIA	2	0	0	0	0	0	0	0	0	0	0	0	0	0	0	0	0	2	0	0	0
SOUTH AFRICA	3	0	0	0	0	0	0	0	0	0	0	0	0	0	0	0	0	1	0	0	0
SOUTH GEORGIA-SANDWICH ISLANDS	0	0	0	0	0	0	0	0	0	0	0	0	0	0	0	0	0	0	0	0	0
SOUTH KOREA	106	0	0	1	0	0	2	0	0	0	0	0	0	0	0	0	0	82	0	0	0
SOUTH SUDAN	0	0	0	0	0	0	0	0	0	0	0	0	0	0	0	0	0	0	0	0	0
SPAIN	6	0	0	0	0	0	0	0	0	0	0	0	0	1	0	0	1	3	0	0	0
SRI LANKA	0	0	0	0	0	0	0	0	0	0	0	0	0	0	0	0	0	0	0	0	0
ST. BARTHÉLEMY	0	0	0	0	0	0	0	0	0	0	0	0	0	0	0	0	0	0	0	0	0
ST. HELENA	0	0	0	0	0	0	0	0	0	0	0	0	0	0	0	0	0	0	0	0	0
ST. KITTS NEVIS	0	0	0	0	0	0	0	0	0	0	0	0	0	0	0	0	0	0	0	0	0
ST. LUCIA	0	0	0	0	0	0	0	0	0	0	0	0	0	0	0	0	0	0	0	0	0
ST. PIERRE AND MIQUELON	0	0	0	0	0	0	0	0	0	0	0	0	0	0	0	0	0	0	0	0	0
ST. VINCENT AND THE GRENADINES	0	0	0	0	0	0	0	0	0	0	0	0	0	0	0	0	0	0	0	0	0
SUDAN	0	0	0	0	0	0	0	0	0	0	0	0	0	0	0	0	0	0	0	0	0
SURINAME	0	0	0	0	0	0	0	0	0	0	0	0	0	0	0	0	0	0	0	0	0
SVALBARD AND JAN MAYEN	0	0	0	0	0	0	0	0	0	0	0	0	0	0	0	0	0	0	0	0	0
SWEDEN	1	0	0	0	0	0	0	0	0	0	0	0	0	0	0	0	0	1	0	0	0
SWITZERLAND	2	0	0	0	0	0	0	0	0	0	0	0	0	0	0	0	0	1	1	0	0
SYRIAN ARAB REPUBLIC	0	0	0	0	0	0	0	0	0	0	0	0	0	0	0	0	0	0	0	0	0
TAIWAN	41	0	0	0	0	0	2	0	0	0	0	0	0	0	0	0	0	38	0	0	0
TAJKISTAN	7	0	0	0	0	0	0	0	0	0	0	0	0	0	0	0	0	6	0	0	0
TANZANIA	8	0	0	0	0	0	0	0	0	0	0	0	0	0	0	0	0	3	0	0	0
THAILAND	4	0	0	1	0	0	0	0	0	0	0	0	0	0	0	0	0	2	0	0	0
TIMOR-LESTE	0	0	0	0	0	0	0	0	0	0	0	0	0	0	0	0	0	0	0	0	0
TOGO	0	0	0	0	0	0	0	0	0	0	0	0	0	0	0	0	0	0	0	0	0
TOKELAU	0	0	0	0	0	0	0	0	0	0	0	0	0	0	0	0	0	0	0	0	0
TONGA	0	0	0	0	0	0	0	0	0	0	0	0	0	0	0	0	0	0	0	0	0
TRINIDAD AND TOBAGO	0	0	0	0	0	0	0	0	0	0	0	0	0	0	0	0	0	0	0	0	0
TUNISIA	0	0	0	0	0	0	0	0	0	0	0	0	0	0	0	0	0	0	0	0	0
TURKEY	17	0	0	0	0	1	0	0	0	0	0	0	0	0	0	0	0	13	0	0	0
TURKMENISTAN	11	0	0	0	0	0	0	0	0	0	0	0	0	0	0	0	0	8	0	0	0
TURKS AND CAICOS ISLANDS	0	0	0	0	0	0	0	0	0	0	0	0	0	0	0	0	0	0	0	0	0
TUVALU	0	0	0	0	0	0	0	0	0	0	0	0	0	0	0	0	0	0	0	0	0
UGANDA	7	0	0	0	0	0	0	0	0	0	0	0	0	0	0	0	0	2	0	0	0
UKRAINE	151	0	0	2	0	0	30	0	0	0	0	0	0	0	8	2	1	40	0	0	0
UNITED ARAB EMIRATES	4	0	0	0	0	0	0	0	0	0	0	0	0	0	0	0	0	3	1	0	0

January 2024 Totals by Location Moved From, and By County Moved To

FROM / TO	TOTAL	GRAYS																			
		ADAMS	ASOTIN	BENTON	CHELAN	CLALLAM	CLARK	COLUMBIA	COWLITZ	DOUGLAS	FERRY	FRANKLIN	GARFIELD	GRANT	HARBOR	ISLAND	JEFFERSON	KING	KITSAP	KITTITAS	KLCKITAT
UNITED KINGDOM	13	0	0	1	0	0	0	0	0	0	0	0	0	0	0	0	0	7	0	0	0
URUGUAY	0	0	0	0	0	0	0	0	0	0	0	0	0	0	0	0	0	0	0	0	0
US MINOR OUTLYING ISLANDS	0	0	0	0	0	0	0	0	0	0	0	0	0	0	0	0	0	0	0	0	0
UZBEKISTAN	27	0	0	0	0	0	0	0	0	0	0	0	0	0	0	0	0	19	0	0	0
VANUATU	0	0	0	0	0	0	0	0	0	0	0	0	0	0	0	0	0	0	0	0	0
VENEZUELA	205	0	0	7	3	0	1	0	0	0	4	0	0	0	0	0	0	116	1	0	0
VIET NAM	9	0	0	0	0	0	1	0	0	1	0	0	0	0	0	0	0	7	0	0	0
VIRGIN ISLANDS	3	0	0	0	0	0	0	0	0	0	0	0	0	0	0	0	0	1	0	0	0
VIRGIN ISLANDS, BRITISH	0	0	0	0	0	0	0	0	0	0	0	0	0	0	0	0	0	0	0	0	0
VIRGIN ISLANDS, U.S.	0	0	0	0	0	0	0	0	0	0	0	0	0	0	0	0	0	0	0	0	0
WALES	0	0	0	0	0	0	0	0	0	0	0	0	0	0	0	0	0	0	0	0	0
WALLIS-FUTUNA	0	0	0	0	0	0	0	0	0	0	0	0	0	0	0	0	0	0	0	0	0
WESTERN SAHARA	0	0	0	0	0	0	0	0	0	0	0	0	0	0	0	0	0	0	0	0	0
YEMEN	0	0	0	0	0	0	0	0	0	0	0	0	0	0	0	0	0	0	0	0	0
ZAMBIA	6	0	0	0	0	0	0	0	0	0	0	0	0	0	0	0	0	5	0	0	0
ZIMBABWE	1	0	0	0	0	0	0	0	0	0	0	0	0	0	0	0	0	0	0	0	0
** TOTAL **	12539	9	33	222	59	127	1095	6	115	35	5	71	0	94	85	169	57	4965	480	39	42

January 2024 Totals by Location Moved From, and By County Moved To

FROM / TO	LEWIS	LINCOLN	MASON	OKANAGON	PACIFIC	PEND		SAN			SNOHOMISH	SPOKANE	STEVENS	THURSTON	WALLA			WHITMAN	YAKIMA	UNKNOWN
						OREILLE	PIERCE	JUAN	SKAGIT	SKAMANIA					WALLA	WHATCOM	WHITMAN			
ALABAMA	0	0	1	0	3	0	13	1	0	0	7	5	0	11	0	3	0	0	0	
ALASKA	1	0	5	1	1	2	17	1	3	0	11	6	5	14	0	0	9	2	1	
ARIZONA	6	0	8	3	3	0	53	0	9	2	40	40	1	28	0	5	17	4	6	
ARKANSAS	0	0	4	0	0	0	11	0	0	0	4	6	0	1	0	0	1	0	0	
CALIFORNIA	10	0	15	6	5	2	185	5	16	6	166	100	5	84	3	15	65	15	20	
COLORADO	2	0	1	2	1	0	33	0	0	0	18	11	3	25	0	3	22	5	2	
CONNECTICUT	0	0	0	0	0	0	3	0	0	0	4	0	0	1	0	0	0	1	0	
DELAWARE	0	0	0	0	0	0	2	0	0	0	1	0	0	0	0	0	1	0	0	
FLORIDA	4	0	6	2	0	0	79	2	6	0	67	26	0	24	0	3	18	4	7	
GEORGIA	0	0	0	0	0	0	24	1	2	1	13	12	0	21	0	1	4	0	3	
HAWAII	2	0	1	0	0	0	31	0	2	1	23	5	0	10	0	0	2	0	0	
IDAHO	2	2	3	5	1	6	19	1	3	0	20	112	9	4	0	9	6	22	3	
ILLINOIS	0	0	0	0	0	0	22	1	2	0	25	11	1	12	0	1	3	2	3	
INDIANA	3	0	0	1	0	0	13	0	1	0	6	4	2	8	0	1	2	1	0	
IOWA	0	0	0	0	1	0	4	0	0	0	6	1	0	4	0	0	1	0	0	
KANSAS	0	0	0	0	0	0	4	1	2	0	4	3	1	15	0	0	1	0	0	
KENTUCKY	1	0	2	0	0	0	13	0	0	0	3	2	0	4	0	0	0	1	0	
LOUISIANA	0	0	0	0	0	0	12	0	0	0	7	3	0	2	0	1	1	0	1	
MAINE	0	0	0	0	0	0	2	0	0	0	0	0	0	0	0	0	0	1	0	
MARYLAND	0	0	0	0	0	0	13	0	4	0	6	7	0	3	0	0	3	1	0	
MASSACHUSETTS	0	0	0	1	0	0	7	0	1	0	13	4	0	2	0	0	4	1	0	
MICHIGAN	0	0	0	0	0	0	14	1	4	0	11	8	0	6	0	1	1	1	3	
MINNESOTA	1	0	3	0	0	0	10	1	1	0	3	7	0	5	0	1	4	2	4	
MISSISSIPPI	0	0	0	0	0	0	4	0	1	0	1	2	0	4	0	0	0	1	0	
MISSOURI	0	0	1	0	0	0	24	0	3	0	16	1	0	6	0	0	5	0	1	
MONTANA	1	0	0	2	0	0	11	1	2	1	13	32	1	5	0	0	9	3	3	
NEBRASKA	0	0	0	0	0	0	1	0	0	0	3	2	0	3	0	0	1	1	1	
NEVADA	3	0	3	0	1	3	30	0	5	0	28	24	0	10	1	1	6	1	2	
NEW HAMPSHIRE	0	0	1	0	0	0	2	0	0	0	1	1	0	0	0	0	2	0	0	
NEW JERSEY	0	0	0	1	0	0	7	0	2	0	16	2	0	5	0	0	2	0	3	
NEW MEXICO	0	0	2	2	0	0	7	1	2	0	6	11	0	7	0	0	7	0	1	
NEW YORK	2	0	0	0	1	1	20	0	3	0	20	2	0	4	0	0	6	2	2	
NORTH CAROLINA	2	0	1	0	0	0	35	1	5	0	14	7	1	15	0	1	2	0	2	
NORTH DAKOTA	0	0	1	3	0	0	3	0	1	0	3	4	0	1	0	0	3	0	0	
OHIO	0	0	2	0	0	0	14	0	0	0	14	6	0	7	0	1	5	1	3	
OKLAHOMA	1	0	1	0	0	0	15	0	0	0	4	2	0	6	0	1	1	0	0	
OREGON	11	2	9	2	17	1	63	8	5	5	50	55	5	35	3	20	33	7	18	
PENNSYLVANIA	0	0	0	0	0	1	16	0	1	0	9	7	0	5	0	0	4	3	0	
RHODE ISLAND	0	0	0	0	0	0	0	0	0	0	2	1	0	0	0	0	0	0	0	
SOUTH CAROLINA	0	0	0	0	0	0	23	1	1	0	10	5	0	8	0	0	0	1	0	
SOUTH DAKOTA	2	0	0	0	0	0	5	0	1	0	4	8	0	1	0	0	0	0	2	
TENNESSEE	2	0	1	0	0	0	22	1	6	0	9	15	0	12	0	1	0	1	3	
TEXAS	2	0	7	1	3	0	128	1	9	1	74	34	0	58	0	8	19	6	12	
UTAH	3	0	5	0	1	1	24	1	3	0	15	18	1	7	0	1	3	4	2	
VERMONT	0	0	0	0	0	0	2	0	0	0	2	0	0	0	0	1	0	0	1	
VIRGINIA	1	0	2	0	0	0	15	2	2	0	10	4	1	10	0	0	2	1	0	
WASHINGTON	0	0	0	0	0	0	0	0	0	0	0	0	0	0	0	0	0	0	0	
WEST VIRGINIA	0	0	0	0	0	0	3	0	0	0	0	1	0	1	0	0	0	0	0	
WISCONSIN	1	0	0	0	1	0	16	0	1	0	4	9	0	3	0	1	1	1	1	
WYOMING	0	0	0	0	0	0	3	0	1	0	1	8	0	1	0	0	0	2	0	
DISTRICT OF COLUMBIA	0	0	1	0	0	0	1	0	0	0	0	0	0	2	0	0	1	0	0	
AFGHANISTAN	0	0	0	0	0	0	0	0	0	0	0	0	0	0	0	0	0	0	0	
ÅLAND ISLANDS	0	0	0	0	0	0	0	0	0	0	0	0	0	0	0	0	0	0	0	
ALBANIA	0	0	0	0	0	0	0	0	0	0	0	0	0	0	0	0	0	0	0	
ALGERIA	0	0	0	0	0	0	0	0	0	0	0	0	0	0	0	0	0	0	0	
AMERICAN SAMOA	0	0	0	0	0	0	10	0	0	0	0	0	0	0	0	0	0	0	0	

January 2024 Totals by Location Moved From, and By County Moved To

FROM / TO	LEWIS	LINCOLN	MASON	OKANAGON	PACIFIC	PEND OREILLE	PIERCE	SAN JUAN	SKAGIT	SKAMANIA	SNOHOMISH	SPOKANE	STEVENS	THURSTON	WAHIAKUM	WALLA WALLA	WHATCOM	WHITMAN	YAKIMA	UNKNOWN
ANDORRA	0	0	0	0	0	0	0	0	0	0	0	0	0	0	0	0	0	0	0	0
ANGOLA	0	0	0	0	0	0	0	0	0	0	0	0	0	0	0	0	0	0	0	0
ANGUILLA	0	0	0	0	0	0	0	0	0	0	0	0	0	0	0	0	0	0	0	0
ANTARCTICA	0	0	0	0	0	0	0	0	0	0	0	0	0	0	0	0	0	0	0	0
ANTIGUA-BARBUDA	0	0	0	0	0	0	0	0	0	0	0	0	0	0	0	0	0	0	0	0
ARGENTINA	0	0	0	0	0	0	1	0	0	0	0	0	0	0	0	0	0	0	0	0
ARMENIA	0	0	0	0	0	0	0	0	0	0	0	0	0	0	0	0	0	0	0	0
ARUBA	0	0	0	0	0	0	0	0	0	0	0	0	0	0	0	0	0	0	0	0
AUSTRALIA	0	0	0	0	0	0	1	0	0	0	0	0	0	0	0	0	0	0	0	0
AUSTRIA	0	0	0	0	0	0	0	0	0	0	0	0	0	0	0	0	0	0	0	0
AZERBAIJAN	0	0	0	0	0	0	0	0	0	0	0	0	0	0	0	0	0	0	0	0
BAHAMAS	0	0	0	0	0	0	0	0	0	0	1	0	0	0	0	0	0	0	0	0
BAHRAIN	0	0	0	0	0	0	0	0	0	0	0	0	0	0	0	0	0	0	0	0
BANGLADESH	0	0	0	0	0	0	0	0	0	0	0	0	0	0	0	0	0	0	0	0
BARBADOS	0	0	0	0	0	0	0	0	0	0	0	0	0	0	0	0	0	0	0	0
BELARUS	0	0	0	0	0	0	1	0	0	0	0	1	0	0	0	0	0	0	0	0
BELGIUM	0	0	0	0	0	0	0	0	0	0	1	0	0	0	0	0	0	0	0	0
BELIZE	0	0	0	0	0	0	1	0	0	0	1	0	0	0	0	0	0	0	0	0
BENIN	0	0	0	0	0	0	0	0	0	0	0	0	0	0	0	0	0	0	0	0
BERMUDA	0	0	0	0	0	0	0	0	0	0	0	0	0	0	0	0	0	0	0	0
BHUTAN	0	0	0	0	0	0	0	0	0	0	0	0	0	0	0	0	0	0	0	0
BOLIVIA	0	0	0	0	0	0	0	0	0	0	0	0	0	0	0	0	0	0	0	0
BONAIRE, SINT EUSTATIUS & SABA	0	0	0	0	0	0	0	0	0	0	0	0	0	0	0	0	0	0	0	0
BOSNIA AND HERZEGOVINA	0	0	0	0	0	0	0	0	0	0	0	0	0	0	0	0	0	0	0	0
BOTSWANA	0	0	0	0	0	0	1	0	0	0	0	0	0	0	0	0	0	0	0	0
BOUVET ISLAND	0	0	0	0	0	0	0	0	0	0	0	0	0	0	0	0	0	0	0	0
BRAZIL	0	0	0	0	0	0	2	0	0	0	8	0	0	0	0	0	0	0	0	1
BRITISH INDIAN OCEAN TERRITORY	0	0	0	0	0	0	0	0	0	0	0	0	0	0	0	0	0	0	0	0
BRUNEI DARUSSALAM	0	0	0	0	0	0	0	0	0	0	0	0	0	0	0	0	0	0	0	0
BULGARIA	0	0	0	0	0	0	0	0	0	0	0	0	0	0	0	0	0	0	0	0
BURKINA FASO	0	0	0	0	0	0	0	0	0	0	1	0	0	0	0	0	0	0	0	0
BURUNDI	0	0	0	0	0	0	0	0	0	0	0	0	0	0	0	0	0	0	0	0
CAMBODIA	0	0	0	0	0	0	0	0	0	0	0	0	0	0	0	0	0	0	0	0
CAMEROON	0	0	0	0	0	0	0	0	0	0	0	0	0	0	0	0	0	0	0	0
CANADA	0	0	0	0	0	0	5	1	2	0	16	4	0	3	0	0	19	1	0	4
CAPE VERDE	0	0	0	0	0	0	0	0	0	0	0	0	0	0	0	0	0	0	0	0
CAYMAN ISLANDS	0	0	0	0	0	0	0	0	0	0	0	1	0	0	0	0	0	0	0	0
CENTRAL AFRICAN REPUBLIC	0	0	0	0	0	0	0	0	0	0	0	0	0	0	0	0	0	0	0	0
CHAD	0	0	0	0	0	0	0	0	0	0	0	0	0	0	0	0	0	0	0	0
CHILE	0	0	0	0	0	0	1	0	0	0	3	0	0	0	0	0	0	0	0	0
CHINA	0	0	0	0	0	0	2	0	0	0	5	1	0	1	0	0	1	0	0	8
CHRISTMAS ISLAND	0	0	0	0	0	0	0	0	0	0	0	0	0	0	0	0	0	0	0	0
COCOS (KEELING) ISLANDS	0	0	0	0	0	0	0	0	0	0	0	0	0	0	0	0	0	0	0	0
COLOMBIA	0	0	0	0	0	0	21	0	2	0	26	1	0	3	0	0	1	0	7	2
COMOROS	0	0	0	0	0	0	0	0	0	0	0	0	0	0	0	0	0	0	0	0
CONGO	0	0	0	0	0	0	0	0	0	0	0	0	0	0	0	0	0	0	0	0
CONGO, THE DEMOCRATIC REPUBLIC	0	0	0	0	0	0	0	0	0	0	0	0	0	0	0	0	0	0	0	0
COOK ISLANDS	0	0	0	0	0	0	0	0	0	0	0	0	0	0	0	0	0	0	0	0
COSTA RICA	0	0	0	0	0	0	2	0	0	0	1	0	0	0	0	0	0	0	0	0
CÔTE D'IVOIRE	0	0	0	0	0	0	0	0	0	0	0	0	0	0	0	0	0	0	0	0
CROATIA	0	0	0	0	0	0	0	0	0	0	0	0	0	0	0	0	0	0	0	0
CUBA	0	0	0	0	0	0	0	0	0	0	1	0	0	0	0	0	0	0	0	0
CURAÇAO	0	0	0	0	0	0	0	0	0	0	0	0	0	0	0	0	0	0	0	0
CYPRUS	0	0	0	0	0	0	0	0	0	0	0	0	0	0	0	0	0	0	0	0
CZECH REPUBLIC	0	0	0	0	0	0	0	0	0	0	0	0	0	0	0	0	0	0	0	0
DENMARK	0	0	0	0	0	0	0	0	0	0	0	0	0	0	0	0	0	0	0	0
DJIBOUTI	0	0	0	0	0	0	0	0	0	0	0	0	0	0	0	0	0	0	0	0
DOMINICA	0	0	0	0	0	0	0	0	0	0	0	0	0	0	0	0	0	0	0	0

January 2024 Totals by Location Moved From, and By County Moved To

FROM / TO	LEWIS	LINCOLN	MASON	OKANAGON	PACIFIC	PEND OREILLE	PIERCE	SAN JUAN	SKAGIT	SKAMANIA	SNOHOMISH	SPOKANE	STEVENS	THURSTON	WAKIUM	WALLA WALLA	WHATCOM	WHITMAN	YAKIMA	UNKNOWN
DOMINICAN REPUBLIC	0	0	0	0	0	0	0	0	0	0	0	0	0	0	0	0	0	0	0	0
ECUADOR	0	0	0	0	0	0	3	0	0	0	4	1	0	1	0	0	0	0	1	0
EGYPT	0	0	0	0	0	0	0	0	0	0	0	0	0	0	0	0	0	0	0	0
EL SALVADOR	0	0	0	1	0	0	1	0	0	0	4	0	0	0	0	0	2	0	0	0
ENGLAND	0	0	0	0	0	0	0	0	0	0	0	0	0	0	0	0	0	0	0	0
EQUATORIAL GUINEA	0	0	0	0	0	0	0	0	0	0	0	0	0	0	0	0	0	0	0	0
ERITREA	0	0	0	0	0	0	0	0	0	0	2	0	0	0	0	0	0	0	0	1
ESTONIA	0	0	0	0	0	0	0	0	0	0	0	0	0	0	0	0	0	0	0	0
ESWATINI (prev. SWAZILAND)	0	0	0	0	0	0	0	0	0	0	0	0	0	0	0	0	0	0	0	0
ETHIOPIA	0	0	0	0	0	0	0	0	0	0	0	0	0	0	0	0	0	0	0	0
FALKLAND ISLANDS (MALVINAS)	0	0	0	0	0	0	0	0	0	0	0	0	0	0	0	0	0	0	0	0
FAROE ISLANDS	0	0	0	0	0	0	0	0	0	0	0	0	0	0	0	0	0	0	0	0
FEDERATED STATES OF MICRONESIA	0	0	0	0	0	0	1	0	0	0	0	0	0	1	0	0	0	0	0	0
FIJI	0	0	0	0	0	0	0	0	0	0	0	0	0	0	0	0	0	0	0	0
FINLAND	0	0	0	0	0	0	0	0	0	0	0	0	0	0	0	0	0	0	0	1
FRANCE	0	0	0	0	0	0	0	0	0	0	0	0	0	1	0	0	0	0	0	0
FRENCH GUIANA	0	0	0	0	0	0	0	0	0	0	0	0	0	0	0	0	0	0	0	0
FRENCH POLYNESIA	0	0	0	0	0	0	0	0	0	0	0	0	0	0	0	0	0	0	0	0
FRENCH SOUTHERN TERRITORIES	0	0	0	0	0	0	0	0	0	0	0	0	0	0	0	0	0	0	0	0
GABON	0	0	0	0	0	0	0	0	0	0	0	0	0	0	0	0	0	0	0	0
GAMBIA	0	0	0	0	0	0	0	0	0	0	1	0	0	0	0	0	0	0	0	0
GEORGIA (Country)	0	0	0	0	0	0	0	0	0	0	0	0	0	0	0	0	0	0	0	0
GERMANY	0	0	0	0	0	0	5	0	0	0	2	0	0	2	0	0	0	0	0	2
GHANA	0	0	0	0	0	0	0	0	0	0	0	1	0	0	0	0	0	0	0	0
GIBRALTAR	0	0	0	0	0	0	0	0	0	0	0	0	0	0	0	0	0	0	0	0
GREECE	0	0	0	0	0	0	0	0	0	0	0	0	0	0	0	0	0	0	0	0
GREENLAND	0	0	0	0	0	0	0	0	0	0	0	0	0	0	0	0	0	0	0	0
GRENADA	0	0	0	0	0	0	0	0	0	0	0	0	0	0	0	0	0	0	0	0
GUADELOUPE	0	0	0	0	0	0	0	0	0	0	0	0	0	0	0	0	0	0	0	0
GUAM	0	0	0	0	0	0	6	0	0	0	2	0	0	6	0	0	0	0	0	2
GUATEMALA	0	0	1	0	0	0	3	0	0	0	2	1	0	3	0	0	3	0	0	0
GUERNSEY	0	0	0	0	0	0	0	0	0	0	0	0	0	0	0	0	0	0	0	0
GUINEA	0	0	0	0	0	0	1	0	0	0	0	0	0	0	0	0	0	0	0	0
GUINEA-BISSAU	0	0	0	0	0	0	0	0	0	0	0	0	0	0	0	0	0	0	0	0
GUYANA	0	0	0	0	0	0	0	0	0	0	0	0	0	0	0	0	0	0	0	0
HAITI	0	0	0	0	0	0	1	0	0	0	1	1	0	0	0	0	0	1	0	0
HEARD ISLAND-MCDONALD ISLANDS	0	0	0	0	0	0	0	0	0	0	0	0	0	0	0	0	0	0	0	0
HOLY SEE (VATICAN CITY STATE)	0	0	0	0	0	0	0	0	0	0	0	0	0	0	0	0	0	0	0	0
HONDURAS	0	0	0	0	0	0	3	0	0	0	0	1	0	0	0	0	0	0	0	0
HONG KONG	0	0	0	0	0	0	0	0	0	0	0	0	0	0	0	0	0	0	0	0
HUNGARY	0	0	0	0	0	0	0	0	0	0	0	0	0	0	0	0	0	0	0	0
ICELAND	0	0	0	0	0	0	0	0	0	0	0	0	0	0	0	0	0	0	0	0
INDIA	0	0	1	0	0	0	5	0	0	0	9	1	0	0	0	0	3	0	0	2
INDONESIA	0	0	0	0	0	0	0	0	0	0	1	0	0	1	0	0	0	0	0	0
IRAN	0	0	0	0	0	0	0	0	0	0	0	0	0	0	0	0	0	0	0	0
IRAQ	0	0	0	0	0	0	0	0	0	0	0	0	0	0	0	0	0	0	0	0
IRELAND	0	0	0	0	0	0	1	0	0	0	0	0	0	0	0	0	0	0	0	0
ISLE OF MAN	0	0	0	0	0	0	0	0	0	0	0	0	0	0	0	0	0	0	0	0
ISRAEL	0	0	0	0	0	0	0	0	0	0	3	0	0	0	0	0	0	0	0	1
ITALY	0	0	0	0	0	0	1	0	0	0	0	0	0	0	0	0	0	0	0	0
JAMAICA	0	0	0	0	0	0	3	1	0	0	1	4	0	0	0	0	0	0	0	0
JAPAN	0	0	0	0	0	0	1	0	1	0	3	0	0	1	0	0	1	0	1	3
JERSEY	0	0	0	0	0	0	0	0	0	0	0	0	0	0	0	0	0	0	0	0
JORDAN	0	0	0	0	0	0	0	0	0	0	2	0	0	0	0	0	0	0	0	0
KAZAKHSTAN	0	0	0	0	0	0	1	0	0	0	1	0	0	1	0	0	0	0	0	0
KENYA	0	0	0	0	0	0	1	0	0	0	2	0	0	2	0	0	0	1	0	0
KIRIBATI	0	0	0	0	0	0	0	0	0	0	0	0	0	0	0	0	0	0	0	0
KUWAIT	0	0	0	0	0	0	1	0	0	0	0	0	0	0	0	0	0	0	0	0

January 2024 Totals by Location Moved From, and By County Moved To

FROM / TO	LEWIS	LINCOLN	MASON	OKANAGON	PACIFIC	PEND OREILLE	PIERCE	SAN JUAN	SKAGIT	SKAMANIA	SNOHOMISH	SPOKANE	STEVENS	THURSTON	WAHIAKUM	WALLA WALLA	WHATCOM	WHITMAN	YAKIMA	UNKNOWN	
KYRGYZSTAN	0	0	0	0	0	0	0	2	0	0	0	1	0	0	0	0	0	0	0	0	11
LAOS	0	0	0	0	0	0	0	0	0	0	0	0	0	0	0	0	0	0	0	0	0
LATVIA	0	0	0	0	0	0	0	0	0	0	0	0	0	0	0	0	0	0	0	0	0
LEBANON	0	0	0	0	0	0	0	0	0	0	0	0	0	0	0	0	0	0	0	0	0
LESOTHO	0	0	0	0	0	0	0	0	0	0	0	0	0	0	0	0	0	0	0	0	0
LIBERIA	0	0	0	0	0	0	0	0	0	0	0	0	0	0	0	0	0	0	0	0	0
LIBYA	0	0	0	0	0	0	0	0	0	0	0	0	0	0	0	0	0	0	0	0	0
LIECHTENSTEIN	0	0	0	0	0	0	0	0	0	0	0	0	0	0	0	0	0	0	0	0	0
LITHUANIA	0	0	0	0	0	0	0	0	0	0	0	0	0	0	0	0	0	0	0	0	0
LUXEMBOURG	0	0	0	0	0	0	0	0	0	0	0	0	0	0	0	0	0	0	0	0	0
MACAU	0	0	0	0	0	0	0	0	0	0	0	0	0	0	0	0	0	0	0	0	0
MACEDONIA	0	0	0	0	0	0	0	0	0	0	0	0	0	0	0	0	0	0	0	0	0
MADAGASCAR	0	0	0	0	0	0	0	0	0	0	0	0	0	0	0	0	0	0	0	0	0
MALAWI	0	0	0	0	0	0	0	0	0	0	0	8	0	0	0	0	0	0	0	0	0
MALAYSIA	0	0	0	0	0	0	0	0	0	0	0	0	0	0	0	0	0	0	0	0	0
MALDIVES	0	0	0	0	0	0	0	0	0	0	0	0	0	0	0	0	0	0	0	0	0
MALI	0	0	0	0	0	0	0	0	0	0	0	0	0	0	0	0	0	0	0	0	0
MALTA	0	0	0	0	0	0	0	0	0	0	0	0	0	0	0	0	0	0	0	0	0
MARSHALL ISLANDS	0	0	0	0	0	0	0	0	0	0	0	3	3	0	0	0	0	0	0	0	0
MARTINIQUE	0	0	0	0	0	0	0	0	0	0	0	0	0	0	0	0	0	0	0	0	0
MAURITANIA	0	0	0	0	0	0	0	0	0	0	0	2	0	0	0	0	0	0	0	0	0
MAURITIUS	0	0	0	0	0	0	0	0	0	0	0	0	0	0	0	0	0	0	0	0	0
MAYOTTE ISLAND	0	0	0	0	0	0	0	0	0	0	0	0	0	0	0	0	0	0	0	0	0
MEXICO	4	0	0	0	0	0	14	1	4	0	28	6	0	6	0	1	2	0	19	2	2
MONACO	0	0	0	0	0	0	0	0	0	0	0	0	0	0	0	0	0	0	0	0	0
MONGOLIA	0	0	0	0	0	0	0	0	0	0	0	1	0	0	0	0	0	0	0	0	0
MONTENEGRO	0	0	0	0	0	0	0	0	0	0	0	0	0	0	0	0	0	0	0	0	0
MONTSERRAT	0	0	0	0	0	0	0	0	0	0	0	0	0	0	0	0	0	0	0	0	0
MOROCCO	0	0	0	0	0	0	0	0	0	0	0	0	0	0	0	0	0	0	0	0	0
MOZAMBIQUE	0	0	0	0	0	0	0	0	0	0	0	1	0	0	0	0	0	0	0	0	0
MYANMAR	0	0	0	0	0	0	0	0	0	0	0	0	0	0	0	0	0	0	0	0	0
NAMIBIA	0	0	0	0	0	0	0	0	0	0	0	0	0	0	0	0	0	0	0	0	0
NAURU	0	0	0	0	0	0	0	0	0	0	0	0	0	0	0	0	0	0	0	0	0
NEPAL	0	0	0	0	0	0	0	0	0	0	0	0	0	0	0	0	0	0	0	0	0
NETHERLANDS	0	0	0	0	0	0	0	0	0	0	0	0	0	0	0	0	0	0	0	0	1
NEW CALEDONIA	0	0	0	0	0	0	0	0	0	0	0	0	0	0	0	0	0	0	0	0	0
NEW ZEALAND	0	0	0	0	0	0	0	0	0	0	0	0	0	0	0	0	0	0	0	0	0
NICARAGUA	0	0	0	0	0	0	2	0	0	0	4	1	0	0	0	0	0	0	0	0	0
NIGER	0	0	0	0	0	0	0	0	0	0	0	0	0	0	0	0	0	0	0	0	0
NIGERIA	0	0	0	0	0	0	0	0	0	0	0	1	0	0	0	0	0	0	0	0	0
NIUE	0	0	0	0	0	0	0	0	0	0	0	0	0	0	0	0	0	0	0	0	0
NORFOLK ISLAND	0	0	0	0	0	0	0	0	0	0	0	0	0	0	0	0	0	0	0	0	0
NORTH KOREA	0	0	0	0	0	0	0	0	0	0	0	0	0	0	0	0	0	0	0	0	0
NORTHERN IRELAND	0	0	0	0	0	0	0	0	0	0	0	0	0	0	0	0	0	0	0	0	0
NORTHERN MARIANA ISLANDS	0	0	0	0	0	0	3	0	0	0	2	0	0	0	0	0	0	0	0	0	1
NORWAY	0	0	0	0	0	0	0	0	0	0	0	0	0	0	0	0	0	0	0	0	0
OCCUPIED PALESTINIAN TERRITORY	0	0	0	0	0	0	0	0	0	0	0	0	0	0	0	0	0	0	0	0	0
OMAN	0	0	0	0	0	0	0	0	0	0	0	0	0	0	0	0	0	0	0	0	0
PAKISTAN	0	0	0	0	0	0	0	0	0	0	0	1	0	0	0	0	1	0	0	0	0
PALAU	0	0	0	0	0	0	0	0	0	0	0	0	0	0	0	0	0	0	0	0	0
PANAMA	0	0	0	0	0	0	0	0	0	0	0	0	0	0	0	0	0	0	0	0	0
PAPUA NEW GUINEA	0	0	0	0	0	0	0	0	0	0	0	0	0	0	0	0	0	0	0	0	0
PARAGUAY	0	0	0	0	0	0	0	0	0	0	0	0	0	0	0	0	0	0	0	0	0
PERU	0	0	0	0	0	0	2	0	0	0	0	0	0	0	0	0	1	0	1	0	0
PHILIPPINES	0	0	0	0	0	0	2	0	0	0	2	0	0	2	0	0	0	0	0	0	0
PITCAIRN	0	0	0	0	0	0	0	0	0	0	0	0	0	0	0	0	0	0	0	0	0
POLAND	0	0	0	0	0	0	0	0	0	0	0	0	0	0	0	0	0	0	0	0	0
PORTUGAL	0	0	0	0	0	0	0	0	0	0	0	0	0	0	0	0	0	0	0	0	0

January 2024 Totals by Location Moved From, and By County Moved To

FROM / TO	LEWIS	LINCOLN	MASON	OKANAGON	PACIFIC	PEND OREILLE	PIERCE	SAN JUAN	SKAGIT	SKAMANIA	SNOHOMISH	SPOKANE	STEVENS	THURSTON	WAHKIAKUM	WALLA WALLA	WHATCOM	WHITMAN	YAKIMA	UNKNOWN
PUERTO RICO	0	0	0	0	0	0	7	0	0	0	1	0	0	0	0	0	0	0	0	0
QATAR	0	0	0	0	0	0	0	0	0	0	0	0	0	0	0	0	0	0	0	0
REPUBLIC OF KOSOVO	0	0	0	0	0	0	0	0	0	0	0	0	0	0	0	0	0	0	0	0
REPUBLIC OF MOLDOVA	0	0	0	0	0	0	3	0	0	0	1	0	0	0	0	0	0	0	0	0
RÉUNION ISLAND	0	0	0	0	0	0	0	0	0	0	0	0	0	0	0	0	0	0	0	0
ROMANIA	0	0	0	0	0	0	3	0	0	0	2	0	0	0	0	0	0	0	0	0
RUSSIA	0	0	0	0	0	0	1	0	0	0	7	4	0	0	0	0	0	0	0	5
RWANDA	0	0	0	0	0	0	0	0	0	0	0	0	0	0	0	0	0	0	0	0
SAMOA	0	0	0	0	0	0	0	0	0	0	0	0	0	0	0	0	0	0	0	0
SAN MARINO	0	0	0	0	0	0	0	0	0	0	0	0	0	0	0	0	0	0	0	0
SAO TOME AND PRINCIPE	0	0	0	0	0	0	0	0	0	0	0	0	0	0	0	0	0	0	0	0
SAUDI ARABIA	0	0	0	0	0	0	0	0	0	0	1	0	0	0	0	0	0	0	0	0
SCOTLAND	0	0	0	0	0	0	0	0	0	0	0	0	0	0	0	0	0	0	0	0
SENEGAL	0	0	0	0	0	0	0	0	0	0	1	0	0	0	0	0	0	0	0	1
SERBIA	0	0	0	0	0	0	0	0	1	0	1	0	0	0	0	0	0	0	0	0
SEYCHELLES	0	0	0	0	0	0	0	0	0	0	0	0	0	0	0	0	0	0	0	0
SIERRA LEONE	0	0	0	0	0	0	0	0	0	0	1	0	0	0	0	0	0	0	0	0
SINGAPORE	0	0	0	0	0	0	0	0	0	0	0	0	0	0	0	0	0	0	0	0
SINT MAARTEN	0	0	0	0	0	0	0	0	0	0	0	0	0	0	0	0	0	0	0	0
SLOVAKIA	0	0	0	0	0	0	0	0	0	0	0	0	0	0	0	0	0	0	0	1
SLOVENIA	0	0	0	0	0	0	0	0	0	0	0	0	0	0	0	0	0	0	0	0
SOLOMON ISLANDS	0	0	0	0	0	0	0	0	0	0	0	0	0	0	0	0	0	0	0	0
SOMALIA	0	0	0	0	0	0	0	0	0	0	0	0	0	0	0	0	0	0	0	0
SOUTH AFRICA	0	0	0	0	0	0	1	0	0	0	1	0	0	0	0	0	0	0	0	0
SOUTH GEORGIA-SANDWICH ISLANDS	0	0	0	0	0	0	0	0	0	0	0	0	0	0	0	0	0	0	0	0
SOUTH KOREA	0	0	0	0	0	0	8	0	1	0	9	0	0	1	0	0	0	1	0	1
SOUTH SUDAN	0	0	0	0	0	0	0	0	0	0	0	0	0	0	0	0	0	0	0	0
SPAIN	0	0	0	0	0	0	0	0	0	0	0	1	0	0	0	0	0	0	0	0
SRI LANKA	0	0	0	0	0	0	0	0	0	0	0	0	0	0	0	0	0	0	0	0
ST. BARTHÉLEMY	0	0	0	0	0	0	0	0	0	0	0	0	0	0	0	0	0	0	0	0
ST. HELENA	0	0	0	0	0	0	0	0	0	0	0	0	0	0	0	0	0	0	0	0
ST. KITTS NEVIS	0	0	0	0	0	0	0	0	0	0	0	0	0	0	0	0	0	0	0	0
ST. LUCIA	0	0	0	0	0	0	0	0	0	0	0	0	0	0	0	0	0	0	0	0
ST. PIERRE AND MIQUELON	0	0	0	0	0	0	0	0	0	0	0	0	0	0	0	0	0	0	0	0
ST. VINCENT AND THE GRENADINES	0	0	0	0	0	0	0	0	0	0	0	0	0	0	0	0	0	0	0	0
SUDAN	0	0	0	0	0	0	0	0	0	0	0	0	0	0	0	0	0	0	0	0
SURINAME	0	0	0	0	0	0	0	0	0	0	0	0	0	0	0	0	0	0	0	0
SVALBARD AND JAN MAYEN	0	0	0	0	0	0	0	0	0	0	0	0	0	0	0	0	0	0	0	0
SWEDEN	0	0	0	0	0	0	0	0	0	0	0	0	0	0	0	0	0	0	0	0
SWITZERLAND	0	0	0	0	0	0	0	0	0	0	0	0	0	0	0	0	0	0	0	0
SYRIAN ARAB REPUBLIC	0	0	0	0	0	0	0	0	0	0	0	0	0	0	0	0	0	0	0	0
TAIWAN	0	0	0	0	0	0	0	0	0	0	0	0	0	0	0	0	0	0	0	1
TAJIKISTAN	0	0	0	0	0	0	0	0	0	0	0	0	0	0	0	0	0	0	0	1
TANZANIA	0	0	0	0	0	0	1	0	0	0	1	1	0	2	0	0	0	0	0	0
THAILAND	0	0	0	0	0	0	0	0	0	0	1	0	0	0	0	0	0	0	0	0
TIMOR-LESTE	0	0	0	0	0	0	0	0	0	0	0	0	0	0	0	0	0	0	0	0
TOGO	0	0	0	0	0	0	0	0	0	0	0	0	0	0	0	0	0	0	0	0
TOKELAU	0	0	0	0	0	0	0	0	0	0	0	0	0	0	0	0	0	0	0	0
TONGA	0	0	0	0	0	0	0	0	0	0	0	0	0	0	0	0	0	0	0	0
TRINIDAD AND TOBAGO	0	0	0	0	0	0	0	0	0	0	0	0	0	0	0	0	0	0	0	0
TUNISIA	0	0	0	0	0	0	0	0	0	0	0	0	0	0	0	0	0	0	0	0
TURKEY	0	0	0	0	0	0	0	0	0	0	1	0	0	1	0	0	0	0	0	1
TURKMENISTAN	0	0	0	0	0	0	0	0	0	0	2	0	0	0	0	0	0	0	0	1
TURKS AND CAICOS ISLANDS	0	0	0	0	0	0	0	0	0	0	0	0	0	0	0	0	0	0	0	0
TUVALU	0	0	0	0	0	0	0	0	0	0	0	0	0	0	0	0	0	0	0	0
UGANDA	0	0	0	0	0	0	1	0	0	0	3	0	0	0	0	0	0	0	0	1
UKRAINE	0	0	0	0	0	0	20	0	0	0	25	13	0	0	0	0	2	1	0	6
UNITED ARAB EMIRATES	0	0	0	0	0	0	0	0	0	0	0	0	0	0	0	0	0	0	0	0

January 2024 Totals by Location Moved From, and By County Moved To

FROM / TO	LEWIS	LINCOLN	MASON	OKANAGON	PACIFIC	PEND		SAN			SNOHOMISH	SPOKANE	STEVENS	THURSTON	WALLA		WHATCOM	WHITMAN	YAKIMA	UNKNOWN
						OREILLE	PIERCE	JUAN	SKAGIT	SKAMANIA					WALLA	WALLA				
UNITED KINGDOM	0	0	0	0	0	0	2	0	0	0	2	0	0	0	0	0	1	0	0	0
URUGUAY	0	0	0	0	0	0	0	0	0	0	0	0	0	0	0	0	0	0	0	0
US MINOR OUTLYING ISLANDS	0	0	0	0	0	0	0	0	0	0	0	0	0	0	0	0	0	0	0	0
UZBEKISTAN	0	0	0	0	0	0	1	0	0	0	4	0	0	0	0	0	0	0	0	3
VANUATU	0	0	0	0	0	0	0	0	0	0	0	0	0	0	0	0	0	0	0	0
VENEZUELA	0	0	0	0	0	0	15	0	0	0	37	3	0	0	0	2	2	0	12	2
VIET NAM	0	0	0	0	0	0	0	0	0	0	0	0	0	0	0	0	0	0	0	0
VIRGIN ISLANDS	0	0	0	0	0	0	2	0	0	0	0	0	0	0	0	0	0	0	0	0
VIRGIN ISLANDS, BRITISH	0	0	0	0	0	0	0	0	0	0	0	0	0	0	0	0	0	0	0	0
VIRGIN ISLANDS, U.S.	0	0	0	0	0	0	0	0	0	0	0	0	0	0	0	0	0	0	0	0
WALES	0	0	0	0	0	0	0	0	0	0	0	0	0	0	0	0	0	0	0	0
WALLIS-FUTUNA	0	0	0	0	0	0	0	0	0	0	0	0	0	0	0	0	0	0	0	0
WESTERN SAHARA	0	0	0	0	0	0	0	0	0	0	0	0	0	0	0	0	0	0	0	0
YEMEN	0	0	0	0	0	0	0	0	0	0	0	0	0	0	0	0	0	0	0	0
ZAMBIA	0	0	0	0	0	0	0	0	0	0	1	0	0	0	0	0	0	0	0	0
ZIMBABWE	0	0	0	0	0	0	0	0	0	0	0	0	0	1	0	0	0	0	0	0
** TOTAL **	67	4	88	33	39	17	1254	35	121	17	1046	685	36	539	7	83	316	102	152	190