



STATE OF WASHINGTON
DEPARTMENT OF LICENSING
PO Box 9035 • Olympia, Washington 98507-9035

May 22, 2009

Washington State Drivers Report for April 2009

The monthly report for April 2009 tabulates Washington drivers' license (WDL) activity. The table below summarizes WDL migration in and out of Washington State. It also identifies the top three in-migration states. This data generates a net increase series. The reported month of surrendered WDLs is a reflection of the month Washington received the information and not when the driver left Washington. Therefore, the net increase is an estimate of net migration. Beginning with the April 1998 data, this report and supporting documentation are available via e-mail at the address below. Our formats are PDF for the report and Excel for the data files.

During the month of April (March 28, 2009 to April 25, 2009), a total of 9,210 out-of-state drivers obtained a Washington driver license. This is 691 fewer than the 9,901 who obtained licenses in April of 2008 (March 29, 2008 to April 26, 2008). Net migration to Washington for April 2009 was 4,715 drivers, compared to 6,057 the same month last year. For the 12 months ending April 2009, 137,060 out-of-state drivers obtained a Washington driver license, a decrease over the same period a year ago of less than half a percent.

The table below displays data using a 12-month moving sum to help smooth out the monthly variance and reveal the trend. The graphs on the attached file display the results of this smoothing. The first graph plots new drivers moving into Washington as well as the net increase.

	Apr 2009			Year Ending Apr 2009		
	2008	2009	% Change	2008	2009	% Change
Total Drivers In	9,901	9,210	-7.0	137,471	137,060	-0.3
California	1,953	1,724	-11.7	27,911	26,690	-4.4
Oregon	1,200	1,449	20.8	17,680	18,694	5.7
Texas	472	421	-10.8	6,690	6,273	-6.2
Returned WDL*	3,844	4,495	16.9	69,818	64,725	-7.3
Net Increase	6,057	4,715	-22.2	67,653	72,335	6.9

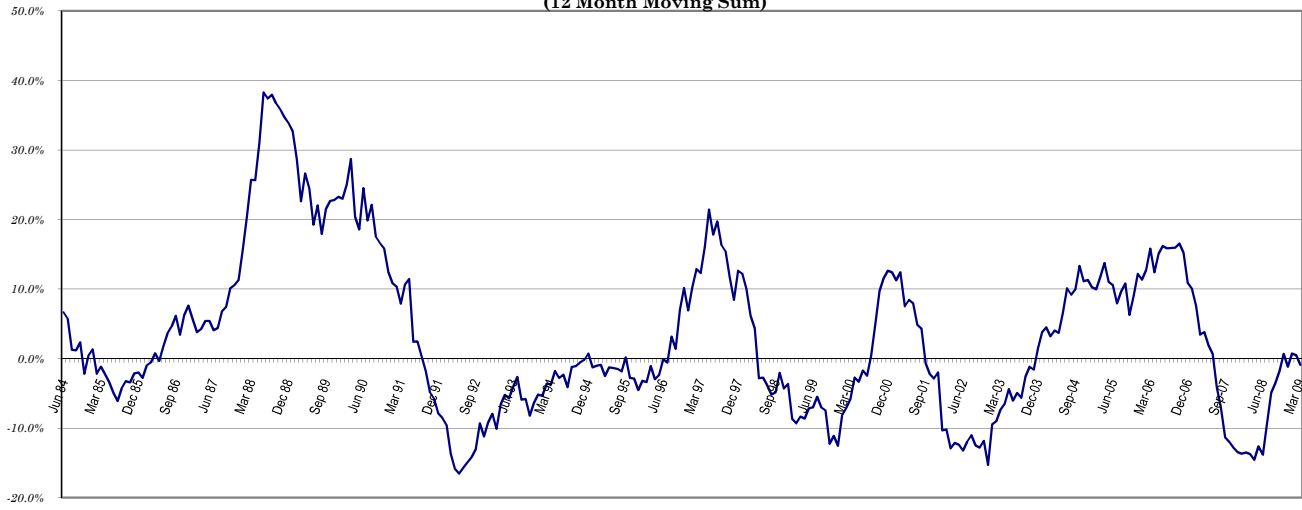
* Reliability of the surrendered license data is limited due to incomplete reporting (e.g. California only reports commercial driver licenses surrendered) as well as delays in the notification process by other jurisdictions.

Alice Vogel, Economic Analyst
Department of Licensing
Office of Budget and Economic Analysis
Highways and Licensing Building
Olympia, WA 98501-48018
(360) 902-3986
FAX: (360) 753-7500
E-Mail: avogel@dol.wa.gov

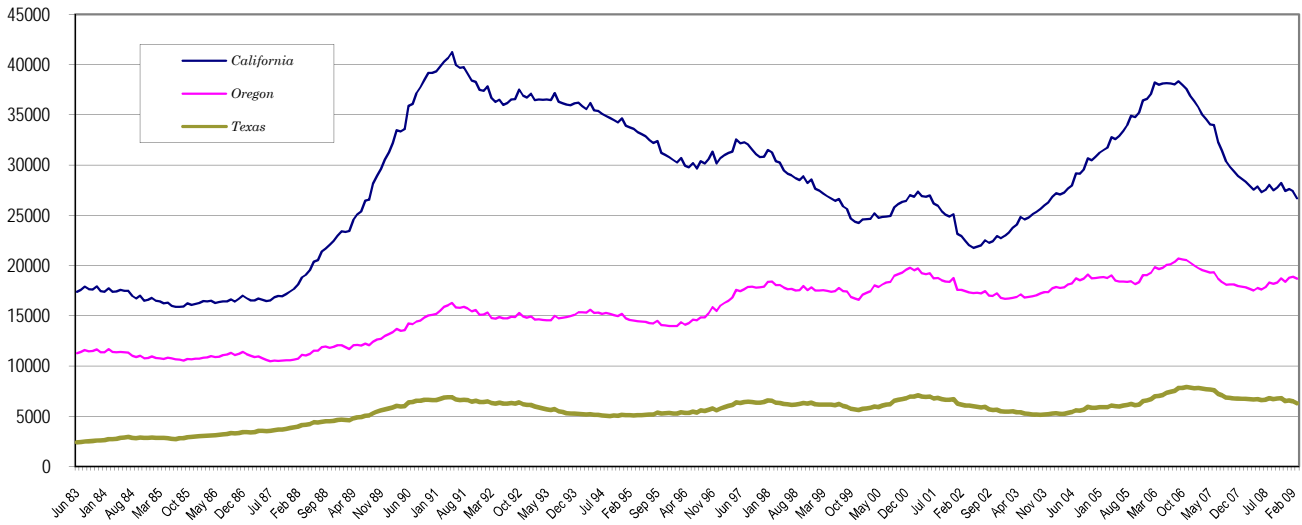
**Washington State Driver's Licenses
(12 Month Moving Sum)**



**% Change Year Ago
(12 Month Moving Sum)**



**Largest States
(12 Months Moving Sum)**



Net Increase States

Month: **April 2009**

State	IN	OUT	Net in Migration
ALABAMA	46	44	2
ALASKA	181	0	181
ARIZONA	399	0	399
ARKANSAS	68	48	20
CALIFORNIA	1724	0	1,724
COLORADO	213	297	(84)
CONNECTICUT	39	0	39
DELAWARE	9	6	3
FLORIDA	320	205	115
GEORGIA	158	177	(19)
HAWAII	163	0	163
IDAHO	405	0	405
ILLINOIS	177	76	101
INDIANA	78	56	22
IOWA	61	36	25
KANSAS	77	160	(83)
KENTUCKY	46	34	12
LOUISIANA	44	70	(26)
MAINE	32	0	32
MARYLAND	78	168	(90)
MASSACHUSETTS	78	1	77
MICHIGAN	224	25	199
MINNESOTA	117	48	69
MISSISSIPPI	29	11	18
MISSOURI	103	60	43
MONTANA	180	166	14
NEBRASKA	54	34	20
NEVADA	256	433	(177)
NEW HAMPSHIRE	21	10	11
NEW JERSEY	67	0	67
NEW MEXICO	99	0	99
NEW YORK	177	0	177
NORTH CAROLINA	200	0	200
NORTH DAKOTA	16	7	9
OHIO	99	193	(94)
OKLAHOMA	74	45	29
OREGON	1449	1258	191
PENNSYLVANIA	104	9	95
RHODE ISLAND	11	0	11
SOUTH CAROLINA	35	64	(29)
SOUTH DAKOTA	35	0	35
TENNESSEE	82	0	82
TEXAS	421	500	(79)
UTAH	159	216	(57)
VERMONT	14	0	14
VIRGINIA	131	0	131
WASHINGTON	6	0	6
WEST VIRGINIA	20	0	20
WISCONSIN	123	38	85
WYOMING	36	0	36
WASH. DC	12	0	12
OUTSIDE U.S.	460	0	460
TOTAL	9,210	4,495	4,715

April 2009 Totals by Location Moved From, and By County Moved To

FROM / TO	TOTAL	GRAYS																			
		ADAMS	ASOTIN	BENTON	CHELAN	CLALLAM	CLARK	COLUMBIA	COWLITZ	DOUGLAS	FERRY	FRANKLIN	GARFIELD	GRANT	HARBOR	ISLAND	JEFFERSON	KING	KITSAP	KITTITAS	KLCKITAT
ALABAMA	46	0	0	2	0	1	0	0	0	1	0	0	0	0	1	0	15	3	0	0	
ALASKA	181	2	1	2	3	7	13	0	2	1	1	0	0	0	3	1	2	47	6	0	0
ARIZONA	399	3	0	14	2	9	35	0	2	3	0	8	1	5	1	12	2	127	16	1	1
ARKANSAS	68	0	0	2	0	1	2	0	0	0	0	1	0	1	0	3	0	29	3	0	0
CALIFORNIA	1724	2	0	33	23	23	112	1	16	7	2	15	1	16	19	33	9	603	87	11	1
COLORADO	213	0	1	5	0	1	13	2	2	1	0	2	0	2	2	3	4	81	17	0	0
CONNECTICUT	39	0	0	1	0	0	2	0	0	0	0	1	0	0	0	1	0	17	6	0	0
DELAWARE	9	0	0	0	0	0	1	0	1	0	0	0	0	0	0	0	0	2	1	0	0
FLORIDA	320	0	3	5	2	1	15	0	1	2	0	3	0	2	2	9	0	116	15	0	0
GEORGIA	158	1	0	3	2	1	4	0	4	0	0	1	0	0	0	3	0	69	10	0	2
HAWAII	163	0	0	1	1	7	9	0	1	0	0	0	0	1	4	4	54	18	0	0	
IDAHO	405	0	37	18	3	1	22	0	0	2	2	5	2	8	3	5	0	62	11	2	1
ILLINOIS	177	0	0	7	0	0	7	0	0	2	0	2	0	1	0	3	1	91	9	0	0
INDIANA	78	0	0	2	0	1	6	0	0	0	0	2	0	0	2	1	0	31	6	0	1
IOWA	61	0	0	2	0	0	1	0	1	1	0	1	0	0	0	1	0	28	1	2	0
KANSAS	77	0	0	1	0	3	3	0	0	0	0	1	0	1	0	2	0	25	1	1	0
KENTUCKY	46	0	0	0	0	0	1	0	0	0	0	0	0	0	1	3	0	15	1	0	0
LOUISIANA	44	0	0	1	0	2	4	0	2	0	0	0	0	1	0	0	0	13	2	1	0
MAINE	32	0	0	0	0	0	0	0	0	0	0	0	0	1	0	0	1	13	1	0	0
MARYLAND	78	0	0	1	0	2	2	0	0	0	0	1	0	0	0	2	0	33	8	0	1
MASSACHUSETTS	78	0	0	0	0	0	1	0	0	0	0	0	0	0	0	1	0	48	3	0	0
MICHIGAN	224	0	0	3	2	3	15	0	0	0	1	1	0	3	2	1	0	99	20	2	1
MINNESOTA	117	0	0	1	3	0	3	0	2	0	0	3	0	0	0	2	2	59	5	0	0
MISSISSIPPI	29	0	0	0	0	0	0	0	0	0	0	0	0	0	0	1	0	8	0	0	0
MISSOURI	103	1	0	2	1	2	6	0	7	0	0	1	0	2	0	0	0	32	3	1	0
MONTANA	180	0	1	5	0	2	9	0	4	1	4	2	0	4	3	2	0	47	8	1	0
NEBRASKA	54	2	0	2	1	0	3	0	0	0	0	0	0	0	3	1	0	17	4	0	1
NEVADA	256	0	2	17	1	7	28	0	6	1	1	1	0	4	1	4	0	78	10	3	3
NEW HAMPSHIRE	21	0	0	0	0	0	2	0	0	0	0	0	0	0	0	2	0	9	1	0	1
NEW JERSEY	67	0	0	2	0	2	0	0	0	1	0	0	0	2	0	1	0	30	1	0	0
NEW MEXICO	99	0	0	11	2	0	7	0	0	0	0	2	2	1	2	0	0	23	6	2	0
NEW YORK	177	0	0	2	0	0	0	0	1	0	0	0	0	0	1	7	0	99	6	0	0
NORTH CAROLINA	200	0	0	2	3	3	5	0	0	1	0	1	0	1	0	2	0	84	7	0	0
NORTH DAKOTA	16	0	0	0	0	0	1	0	0	0	0	1	0	0	0	0	1	3	2	1	0
OHIO	99	0	0	1	0	1	2	0	0	0	0	1	0	0	1	3	0	48	7	0	0
OKLAHOMA	74	0	1	1	0	1	6	0	1	0	0	0	0	1	1	2	0	15	4	0	0
OREGON	1449	3	2	61	5	10	445	1	59	5	3	40	0	15	10	13	6	265	16	3	27
PENNSYLVANIA	104	0	0	2	0	1	6	0	1	0	0	1	0	0	0	4	1	46	9	0	0
RHODE ISLAND	11	0	0	0	0	0	1	0	0	0	0	0	0	0	0	0	0	6	0	0	0
SOUTH CAROLINA	35	0	0	2	0	0	0	0	0	0	0	1	0	2	0	0	0	9	7	0	0
SOUTH DAKOTA	35	0	0	2	1	0	1	0	2	0	0	0	0	0	0	1	1	10	1	1	0
TENNESSEE	82	0	0	4	2	2	1	0	2	1	0	1	0	0	0	1	0	32	5	0	0
TEXAS	421	0	0	10	2	5	19	1	2	0	0	3	2	6	2	7	0	167	25	1	1
UTAH	159	0	1	3	1	1	6	0	1	0	0	3	0	0	2	4	0	59	7	0	0
VERMONT	14	0	0	0	0	0	0	0	0	0	0	0	0	0	0	0	0	7	0	1	0
VIRGINIA	131	0	0	3	0	0	5	0	0	0	0	0	0	0	1	3	0	54	18	1	0
WASHINGTON	6	0	0	0	0	0	5	0	0	0	0	0	0	0	0	0	0	0	0	0	0
WEST VIRGINIA	20	0	0	0	0	0	1	0	1	0	0	0	0	0	0	0	0	3	1	0	0
WISCONSIN	123	2	0	5	2	0	4	0	2	0	0	2	0	1	0	2	0	50	6	1	0
WYOMING	36	0	0	0	0	2	2	0	1	0	0	0	0	0	0	1	0	7	3	0	0
WASHINGTON D.C.	12	0	0	0	0	0	1	0	0	0	0	0	0	0	0	1	1	8	0	0	0
ARGENTINA	0	0	0	0	0	0	0	0	0	0	0	0	0	0	0	0	0	0	0	0	0
BELIZE (BRIT HONDU)	0	0	0	0	0	0	0	0	0	0	0	0	0	0	0	0	0	0	0	0	0
BOLIVIA	0	0	0	0	0	0	0	0	0	0	0	0	0	0	0	0	0	0	0	0	0

April 2009 Totals by Location Moved From, and By County Moved To

FROM / TO	TOTAL	GRAYS																			
		ADAMS	ASOTIN	BENTON	CHELAN	CLALLAM	CLARK	COLUMBIA	COWLITZ	DOUGLAS	FERRY	FRANKLIN	GARFIELD	GRANT	HARBOR	ISLAND	JEFFERSON	KING	KITSAP	KITTITAS	KLCKITAT
BRAZIL	22	0	0	0	0	0	1	0	3	0	0	0	0	0	0	0	0	14	0	0	0
CHILE	0	0	0	0	0	0	0	0	0	0	0	0	0	0	0	0	0	0	0	0	0
CANAL ZONE	0	0	0	0	0	0	0	0	0	0	0	0	0	0	0	0	0	0	0	0	0
COLUMBIA	2	0	0	0	0	0	0	0	0	0	0	0	0	0	0	0	0	2	0	0	0
COSTA RICA	2	0	0	0	0	0	0	0	0	0	0	0	0	0	0	0	0	2	0	0	0
EL SALVADOR	3	0	0	0	0	0	0	0	0	0	0	0	0	0	0	0	0	1	1	0	0
EQUADOR	0	0	0	0	0	0	0	0	0	0	0	0	0	0	0	0	0	0	0	0	0
GUYANA	0	0	0	0	0	0	0	0	0	0	0	0	0	0	0	0	0	0	0	0	0
NICARAGUA	1	0	0	0	0	0	0	0	0	0	0	0	0	0	0	0	0	1	0	0	0
PANAMA	1	0	0	0	0	0	0	0	0	0	0	0	0	0	0	0	0	1	0	0	0
PERU	0	0	0	0	0	0	0	0	0	0	0	0	0	0	0	0	0	0	0	0	0
PARAGUAY	0	0	0	0	0	0	0	0	0	0	0	0	0	0	0	0	0	0	0	0	0
SURINAM	0	0	0	0	0	0	0	0	0	0	0	0	0	0	0	0	0	0	0	0	0
TRINIDAD	0	0	0	0	0	0	0	0	0	0	0	0	0	0	0	0	0	0	0	0	0
UPPER VOLTA	1	0	0	0	0	0	0	0	0	0	0	0	0	0	0	0	0	1	0	0	0
URUGUAY	0	0	0	0	0	0	0	0	0	0	0	0	0	0	0	0	0	0	0	0	0
VENEZUELA	2	0	0	0	0	0	0	0	0	0	0	0	0	0	0	0	0	2	0	0	0
ALGERIA	0	0	0	0	0	0	0	0	0	0	0	0	0	0	0	0	0	0	0	0	0
ANGOLA	0	0	0	0	0	0	0	0	0	0	0	0	0	0	0	0	0	0	0	0	0
CAMERON	0	0	0	0	0	0	0	0	0	0	0	0	0	0	0	0	0	0	0	0	0
CHAD	2	0	0	0	0	0	0	0	0	0	0	0	0	0	0	0	0	2	0	0	0
CONGO	0	0	0	0	0	0	0	0	0	0	0	0	0	0	0	0	0	0	0	0	0
C. AFRICAN REP.	0	0	0	0	0	0	0	0	0	0	0	0	0	0	0	0	0	0	0	0	0
BOTSWANA	0	0	0	0	0	0	0	0	0	0	0	0	0	0	0	0	0	0	0	0	0
BURUNDI	0	0	0	0	0	0	0	0	0	0	0	0	0	0	0	0	0	0	0	0	0
DAHOMEY	0	0	0	0	0	0	0	0	0	0	0	0	0	0	0	0	0	0	0	0	0
EQ. GUINEA	0	0	0	0	0	0	0	0	0	0	0	0	0	0	0	0	0	0	0	0	0
EGYPT	0	0	0	0	0	0	0	0	0	0	0	0	0	0	0	0	0	0	0	0	0
ETHIOPIA	0	0	0	0	0	0	0	0	0	0	0	0	0	0	0	0	0	0	0	0	0
GABON	0	0	0	0	0	0	0	0	0	0	0	0	0	0	0	0	0	0	0	0	0
GAMBIA	0	0	0	0	0	0	0	0	0	0	0	0	0	0	0	0	0	0	0	0	0
GHANA	0	0	0	0	0	0	0	0	0	0	0	0	0	0	0	0	0	0	0	0	0
GUINEA	0	0	0	0	0	0	0	0	0	0	0	0	0	0	0	0	0	0	0	0	0
IVORY COAST	0	0	0	0	0	0	0	0	0	0	0	0	0	0	0	0	0	0	0	0	0
KENYA	4	0	0	0	0	0	0	0	0	0	0	0	0	0	0	0	0	2	0	0	0
LIBYA	2	0	0	0	0	0	0	0	0	0	0	0	0	0	0	0	0	0	0	0	0
LIBERIA	0	0	0	0	0	0	0	0	0	0	0	0	0	0	0	0	0	0	0	0	0
MALAWI	0	0	0	0	0	0	0	0	0	0	0	0	0	0	0	0	0	0	0	0	0
MALAGASY	0	0	0	0	0	0	0	0	0	0	0	0	0	0	0	0	0	0	0	0	0
MORROCCO	0	0	0	0	0	0	0	0	0	0	0	0	0	0	0	0	0	0	0	0	0
MAURITANIA	0	0	0	0	0	0	0	0	0	0	0	0	0	0	0	0	0	0	0	0	0
MALI	0	0	0	0	0	0	0	0	0	0	0	0	0	0	0	0	0	0	0	0	0
NIGER	0	0	0	0	0	0	0	0	0	0	0	0	0	0	0	0	0	0	0	0	0
NIGERIA	0	0	0	0	0	0	0	0	0	0	0	0	0	0	0	0	0	0	0	0	0
RHODESIA	0	0	0	0	0	0	0	0	0	0	0	0	0	0	0	0	0	0	0	0	0
RWANDA	0	0	0	0	0	0	0	0	0	0	0	0	0	0	0	0	0	0	0	0	0
SOUTH AFRICA	1	0	0	0	0	0	0	0	0	0	0	0	0	0	0	0	0	1	0	0	0
SOUTH WEST AFRICA	0	0	0	0	0	0	0	0	0	0	0	0	0	0	0	0	0	0	0	0	0
SIERRA LEONE	0	0	0	0	0	0	0	0	0	0	0	0	0	0	0	0	0	0	0	0	0
SWAZILAND	0	0	0	0	0	0	0	0	0	0	0	0	0	0	0	0	0	0	0	0	0
SENEGAL	0	0	0	0	0	0	0	0	0	0	0	0	0	0	0	0	0	0	0	0	0
SOMALI REPUBLIC	0	0	0	0	0	0	0	0	0	0	0	0	0	0	0	0	0	0	0	0	0
SUDAN	0	0	0	0	0	0	0	0	0	0	0	0	0	0	0	0	0	0	0	0	0
TOGO	0	0	0	0	0	0	0	0	0	0	0	0	0	0	0	0	0	0	0	0	0
TUNISIA	0	0	0	0	0	0	0	0	0	0	0	0	0	0	0	0	0	0	0	0	0
TANZANIA	0	0	0	0	0	0	0	0	0	0	0	0	0	0	0	0	0	0	0	0	0

April 2009 Totals by Location Moved From, and By County Moved To

FROM / TO	TOTAL	GRAYS																			
		ADAMS	ASOTIN	BENTON	CHELAN	CLALLAM	CLARK	COLUMBIA	COWLITZ	DOUGLAS	FERRY	FRANKLIN	GARFIELD	GRANT	HARBOR	ISLAND	JEFFERSON	KING	KITSAP	KITTITAS	KLCKITAT
UGANDA	0	0	0	0	0	0	0	0	0	0	0	0	0	0	0	0	0	0	0	0	0
ZAIRE	0	0	0	0	0	0	0	0	0	0	0	0	0	0	0	0	0	0	0	0	0
AFGHANISTAN	0	0	0	0	0	0	0	0	0	0	0	0	0	0	0	0	0	0	0	0	0
BANGLADESH	0	0	0	0	0	0	0	0	0	0	0	0	0	0	0	0	0	0	0	0	0
BHUTAN	0	0	0	0	0	0	0	0	0	0	0	0	0	0	0	0	0	0	0	0	0
BURMA	0	0	0	0	0	0	0	0	0	0	0	0	0	0	0	0	0	0	0	0	0
BAHRAIN	0	0	0	0	0	0	0	0	0	0	0	0	0	0	0	0	0	0	0	0	0
CEYLON (SRI LANKA)	0	0	0	0	0	0	0	0	0	0	0	0	0	0	0	0	0	0	0	0	0
CHINA	8	0	0	0	0	0	0	0	0	0	0	0	0	0	0	0	0	7	0	0	0
CAMBODIA	0	0	0	0	0	0	0	0	0	0	0	0	0	0	0	0	0	0	0	0	0
CYPRUS	0	0	0	0	0	0	0	0	0	0	0	0	0	0	0	0	0	0	0	0	0
JORDAN	1	0	0	0	0	0	1	0	0	0	0	0	0	0	0	0	0	0	0	0	0
JAPAN	11	0	0	0	0	0	1	0	1	0	0	0	0	0	0	1	0	7	0	0	0
KUWAIT	0	0	0	0	0	0	0	0	0	0	0	0	0	0	0	0	0	0	0	0	0
IRAN	0	0	0	0	0	0	0	0	0	0	0	0	0	0	0	0	0	0	0	0	0
ISRAEL	0	0	0	0	0	0	0	0	0	0	0	0	0	0	0	0	0	0	0	0	0
INDIA	24	0	0	0	0	0	0	0	0	0	0	0	0	0	0	0	0	22	0	0	0
IRAQ	0	0	0	0	0	0	0	0	0	0	0	0	0	0	0	0	0	0	0	0	0
INDONESIA	1	0	0	0	0	0	0	0	0	0	0	0	0	0	0	0	0	1	0	0	0
KOREA	18	0	0	0	0	0	1	0	0	0	0	0	0	0	0	0	0	15	0	0	0
LAOS	0	0	0	0	0	0	0	0	0	0	0	0	0	0	0	0	0	0	0	0	0
LEBANON	0	0	0	0	0	0	0	0	0	0	0	0	0	0	0	0	0	0	0	0	0
MALAYSIA	0	0	0	0	0	0	0	0	0	0	0	0	0	0	0	0	0	0	0	0	0
MONGOLIA	6	0	0	0	0	0	0	0	0	0	0	0	0	0	0	0	0	4	0	0	0
NEPAL	0	0	0	0	0	0	0	0	0	0	0	0	0	0	0	0	0	0	0	0	0
OMAN	0	0	0	0	0	0	0	0	0	0	0	0	0	0	0	0	0	0	0	0	0
PAKISTAN	0	0	0	0	0	0	0	0	0	0	0	0	0	0	0	0	0	0	0	0	0
QATAR	0	0	0	0	0	0	0	0	0	0	0	0	0	0	0	0	0	0	0	0	0
SIKKIM	0	0	0	0	0	0	0	0	0	0	0	0	0	0	0	0	0	0	0	0	0
SYRIA	0	0	0	0	0	0	0	0	0	0	0	0	0	0	0	0	0	0	0	0	0
SAUDI ARABIA	2	0	0	0	0	0	0	0	0	0	0	0	0	0	0	0	0	2	0	0	0
SINGAPORE	0	0	0	0	0	0	0	0	0	0	0	0	0	0	0	0	0	0	0	0	0
TAIWAN	3	0	0	0	0	0	0	0	0	0	0	0	0	0	0	0	0	3	0	0	0
THAILAND	2	0	0	0	0	0	0	0	0	0	0	0	0	0	0	0	0	0	0	0	0
TURKEY	1	0	0	0	0	0	0	0	0	0	0	0	0	0	0	0	0	1	0	0	0
USSR	1	0	0	0	0	0	1	0	0	0	0	0	0	0	0	0	0	0	0	0	0
UNITED ARAB EMIRATE	0	0	0	0	0	0	0	0	0	0	0	0	0	0	0	0	0	0	0	0	0
VIETNAM	0	0	0	0	0	0	0	0	0	0	0	0	0	0	0	0	0	0	0	0	0
YEMEN	0	0	0	0	0	0	0	0	0	0	0	0	0	0	0	0	0	0	0	0	0
AUSTRIA	0	0	0	0	0	0	0	0	0	0	0	0	0	0	0	0	0	0	0	0	0
BULGARIA	1	0	0	0	0	0	0	0	0	0	0	0	0	0	0	0	0	1	0	0	0
BELGIUM	0	0	0	0	0	0	0	0	0	0	0	0	0	0	0	0	0	0	0	0	0
DENMARK	0	0	0	0	0	0	0	0	0	0	0	0	0	0	0	0	0	0	0	0	0
ENGLAND	9	0	0	0	0	0	0	0	0	0	0	0	0	0	0	0	0	8	0	0	0
FRANCE	1	0	0	0	0	0	0	0	0	0	0	0	0	0	0	0	0	1	0	0	0
FINLAND	0	0	0	0	0	0	0	0	0	0	0	0	0	0	0	0	0	0	0	0	0
CZECHOSLAVAKIA	0	0	0	0	0	0	0	0	0	0	0	0	0	0	0	0	0	0	0	0	0
GREECE	0	0	0	0	0	0	0	0	0	0	0	0	0	0	0	0	0	0	0	0	0
GERMANY	22	0	0	0	0	1	0	0	0	0	0	0	0	0	0	0	0	8	0	0	0
IRELAND	3	0	0	0	0	0	0	0	0	0	0	0	0	0	0	0	0	3	0	0	0
ITALY	1	0	0	0	0	0	0	0	0	0	0	0	0	0	0	0	0	0	0	0	0
HUNGARY	0	0	0	0	0	0	0	0	0	0	0	0	0	0	0	0	0	0	0	0	0
LUXEMBOURG	0	0	0	0	0	0	0	0	0	0	0	0	0	0	0	0	0	0	0	0	0
NETHERLANDS	2	0	0	0	0	0	0	0	0	0	0	0	0	0	0	0	0	2	0	0	0
NORWAY	0	0	0	0	0	0	0	0	0	0	0	0	0	0	0	0	0	0	0	0	0
POLAND	1	0	0	0	0	0	0	0	0	0	0	0	0	0	0	0	0	1	0	0	0

April 2009 Totals by Location Moved From, and By County Moved To

FROM / TO	TOTAL	GRAYS																			
		ADAMS	ASOTIN	BENTON	CHELAN	CLALLAM	CLARK	COLUMBIA	COWLITZ	DOUGLAS	FERRY	FRANKLIN	GARFIELD	GRANT	HARBOR	ISLAND	JEFFERSON	KING	KITSAP	KITTITAS	KLCKITAT
SPAIN	1	0	0	0	0	0	0	0	0	0	0	0	0	0	0	0	0	1	0	0	0
SWITZERLAND	0	0	0	0	0	0	0	0	0	0	0	0	0	0	0	0	0	0	0	0	0
SWEDEN	1	0	0	0	0	0	0	0	0	0	0	0	0	0	0	1	0	0	0	0	0
ROMANIA	0	0	0	0	0	0	0	0	0	0	0	0	0	0	0	0	0	0	0	0	0
YUGOSLAVIA	0	0	0	0	0	0	0	0	0	0	0	0	0	0	0	0	0	0	0	0	0
ALBANIA	0	0	0	0	0	0	0	0	0	0	0	0	0	0	0	0	0	0	0	0	0
ANDORRA	0	0	0	0	0	0	0	0	0	0	0	0	0	0	0	0	0	0	0	0	0
AMERICAN SAMOA	19	0	0	0	0	0	0	0	0	0	0	0	0	0	0	0	0	13	0	0	0
BORNEO	0	0	0	0	0	0	0	0	0	0	0	0	0	0	0	0	0	0	0	0	0
CUBA	0	0	0	0	0	0	0	0	0	0	0	0	0	0	0	0	0	0	0	0	0
BERMUDA	0	0	0	0	0	0	0	0	0	0	0	0	0	0	0	0	0	0	0	0	0
DOMINICAN REPUBLIC	0	0	0	0	0	0	0	0	0	0	0	0	0	0	0	0	0	0	0	0	0
FIJI	2	0	0	0	0	0	0	0	0	0	0	0	0	0	0	0	0	2	0	0	0
GUAM	25	0	0	0	0	3	2	0	0	0	0	0	0	0	2	0	4	2	0	0	0
HAITI	0	0	0	0	0	0	0	0	0	0	0	0	0	0	0	0	0	0	0	0	0
JAMAICA	0	0	0	0	0	0	0	0	0	0	0	0	0	0	0	0	0	0	0	0	0
NEW ZEALAND	0	0	0	0	0	0	0	0	0	0	0	0	0	0	0	0	0	0	0	0	0
PORTUGAL	0	0	0	0	0	0	0	0	0	0	0	0	0	0	0	0	0	0	0	0	0
PHILIPPINES	4	0	0	0	0	0	1	0	0	0	0	0	0	0	0	0	2	0	0	0	0
PUERTO RICO	13	0	0	0	0	0	1	0	0	0	0	0	0	0	0	0	3	0	0	0	0
TAHITI	0	0	0	0	0	0	0	0	0	0	0	0	0	0	0	0	0	0	0	0	0
TONGA	0	0	0	0	0	0	0	0	0	0	0	0	0	0	0	0	0	0	0	0	0
VIRGIN ISLANDS	1	0	0	0	0	0	0	0	0	0	0	0	0	0	0	0	0	1	0	0	0
WEST SAMOA	0	0	0	0	0	0	0	0	0	0	0	0	0	0	0	0	0	0	0	0	0
AUSTRALIA	8	0	0	0	1	0	0	0	0	0	0	0	0	0	0	0	7	0	0	0	0
ANTARTICA	0	0	0	0	0	0	0	0	0	0	0	0	0	0	0	0	0	0	0	0	0
ICELAND	0	0	0	0	0	0	0	0	0	0	0	0	0	0	0	0	0	0	0	0	0
GREENLAND	0	0	0	0	0	0	0	0	0	0	0	0	0	0	0	0	0	0	0	0	0
MEXICO	96	1	0	4	7	0	6	0	4	4	0	10	0	1	0	0	23	0	0	0	0
ALBERTA	4	0	0	0	0	0	0	0	0	0	0	0	0	0	0	0	2	0	0	0	0
BRITISH COLUMBIA	55	0	0	0	0	1	1	0	0	0	0	0	0	0	1	0	33	1	0	0	0
MANITOBA	0	0	0	0	0	0	0	0	0	0	0	0	0	0	0	0	0	0	0	0	0
NEW BRUNSWICK	0	0	0	0	0	0	0	0	0	0	0	0	0	0	0	0	0	0	0	0	0
NEWFOUNDLAND	0	0	0	0	0	0	0	0	0	0	0	0	0	0	0	0	0	0	0	0	0
NOVA SCOTIA	1	0	0	0	0	0	0	0	0	0	0	0	0	0	0	0	1	0	0	0	0
ONTARIO	16	0	0	0	0	0	0	0	0	0	0	0	0	0	0	0	15	1	0	0	0
PRINCE EDWARD IS.	1	0	0	0	0	0	0	0	0	0	0	0	0	0	0	0	0	0	0	0	0
QUEBEC	3	0	0	0	0	0	0	0	0	0	0	0	0	0	0	0	2	0	0	0	0
SASKATCHEWAN	0	0	0	0	0	0	0	0	0	0	0	0	0	0	0	0	0	0	0	0	0
NORTHWEST TERRITORY	0	0	0	0	0	0	0	0	0	0	0	0	0	0	0	0	0	0	0	0	0
YUKON TERRITORY	0	0	0	0	0	0	0	0	0	0	0	0	0	0	0	0	0	0	0	0	0
UNKNOWN	49	0	0	2	0	3	2	0	0	0	0	0	1	0	0	0	12	1	0	0	0
** TOTAL **	9210	17	49	247	70	110	855	5	132	34	14	117	8	83	64	157	35	3129	413	36	41

April 2009 Totals by Location Moved From, and By County Moved To

FROM / TO	PEND																SAN				WALLA				
	LEWIS	LINCOLN	MASON	OKANAGON	PACIFIC	OREILLE	PIERCE	JUAN	SKAGIT	SKAMANIA	SNOHOMISH	SPOKANE	STEVENS	THURSTON	WAHKIAKUM	WALLA	WHATCOM	WHITMAN	YAKIMA	UNKNOWN					
ALABAMA	0	0	0	1	0	0	9	0	1	0	8	0	0	2	0	1	0	0	1	0					
ALASKA	2	0	0	0	2	0	25	3	2	0	14	14	0	6	0	5	9	3	5	0					
ARIZONA	6	1	4	2	0	2	40	1	3	0	44	17	1	11	0	0	16	2	7	0					
ARKANSAS	0	0	0	0	0	0	9	1	0	0	8	6	0	1	0	0	1	0	0	0					
CALIFORNIA	17	2	11	7	4	5	179	11	27	2	159	94	11	65	0	19	51	5	40	1					
COLORADO	0	0	0	2	0	0	15	0	2	0	19	10	3	9	0	3	11	0	2	1					
CONNECTICUT	0	0	0	0	0	0	3	0	0	0	3	1	0	3	0	0	1	0	0	0					
DELAWARE	0	0	0	0	0	0	2	0	0	0	0	1	0	1	0	0	0	0	0	0					
FLORIDA	1	0	2	3	0	2	41	0	2	0	34	15	1	23	0	3	10	0	6	1					
GEORGIA	2	0	2	0	0	1	13	2	0	0	9	7	0	9	0	2	6	1	4	0					
HAWAII	0	1	1	0	0	0	20	2	2	0	14	8	0	5	0	2	3	3	1	0					
IDAHO	3	1	5	3	2	2	26	1	2	0	25	94	4	10	1	8	10	10	14	0					
ILLINOIS	1	0	1	1	0	0	15	1	0	0	11	4	1	9	1	0	5	1	2	1					
INDIANA	0	0	0	1	0	0	11	1	0	0	7	0	2	1	0	0	3	0	0	0					
IOWA	0	0	0	0	0	0	8	0	0	0	3	4	0	3	0	0	3	1	1	0					
KANSAS	0	0	1	1	1	0	9	0	2	0	6	2	2	11	0	1	1	0	2	0					
KENTUCKY	1	0	0	1	0	0	8	0	1	0	5	1	0	4	0	0	3	0	1	0					
LOUISIANA	1	0	1	1	0	0	5	0	2	0	3	3	0	0	0	1	1	0	0	0					
MAINE	0	0	0	1	0	0	4	0	0	0	1	1	0	5	0	1	3	0	0	0					
MARYLAND	0	0	0	0	0	0	10	0	0	0	1	3	0	7	0	0	1	2	4	0					
MASSACHUSETTS	0	1	0	0	0	0	10	0	2	0	6	0	0	4	0	0	0	1	1	0					
MICHIGAN	0	0	1	1	0	0	26	0	1	1	17	7	0	5	0	1	6	1	4	0					
MINNESOTA	2	2	1	0	0	0	14	1	1	0	7	3	1	4	0	0	1	0	0	0					
MISSISSIPPI	3	0	0	1	0	0	4	1	0	0	3	4	0	4	0	0	0	0	0	0					
MISSOURI	0	0	0	0	1	0	14	0	4	0	5	6	0	7	0	2	3	0	3	0					
MONTANA	0	0	0	2	0	0	8	0	3	1	21	36	0	5	0	2	3	3	3	0					
NEBRASKA	0	0	0	0	0	0	7	0	0	0	1	6	0	2	0	0	3	0	1	0					
NEVADA	0	0	2	0	1	0	23	0	4	0	17	15	4	3	0	0	5	2	13	0					
NEW HAMPSHIRE	1	0	0	0	0	0	2	0	0	0	1	0	0	2	0	0	0	0	0	0					
NEW JERSEY	0	0	1	0	0	0	5	0	2	0	6	5	0	7	0	0	0	0	2	0					
NEW MEXICO	0	0	0	1	1	0	8	0	3	0	7	8	1	4	0	0	6	1	1	0					
NEW YORK	0	0	1	0	0	0	26	0	3	0	10	7	0	6	0	0	5	1	2	0					
NORTH CAROLINA	0	1	2	1	0	0	30	3	1	2	18	5	0	14	0	2	6	0	5	1					
NORTH DAKOTA	0	0	0	0	0	0	2	0	0	0	0	1	0	2	0	0	1	0	1	0					
OHIO	1	1	1	0	0	0	9	0	1	0	7	8	0	3	0	0	3	1	0	0					
OKLAHOMA	1	0	3	1	0	0	15	0	1	0	6	5	0	5	0	2	0	0	2	0					
OREGON	40	0	10	6	17	1	91	1	20	11	53	44	5	25	2	42	20	5	66	1					
PENNSYLVANIA	0	0	1	0	2	0	11	0	0	0	4	3	0	9	0	1	0	2	0	0					
RHODE ISLAND	0	0	0	0	0	0	1	0	0	0	2	1	0	0	0	0	0	0	0	0					
SOUTH CAROLINA	0	0	0	0	0	0	8	0	0	0	1	1	1	3	0	0	0	0	0	0					
SOUTH DAKOTA	0	0	0	0	0	0	5	0	1	0	4	1	0	1	0	0	1	1	1	0					
TENNESSEE	0	0	0	2	0	0	12	0	1	0	5	2	0	5	0	0	1	0	2	1					
TEXAS	2	0	0	0	1	0	58	0	3	0	33	21	1	15	0	6	9	3	16	0					
UTAH	0	0	0	2	0	0	20	0	1	0	9	18	0	7	0	1	7	0	6	0					
VERMONT	0	0	0	0	0	0	3	0	0	0	2	0	0	0	0	0	1	0	0	0					
VIRGINIA	1	0	0	0	0	0	16	1	0	0	12	3	0	5	0	0	5	2	1	0					
WASHINGTON	0	0	0	0	0	0	0	0	1	0	0	0	0	0	0	0	0	0	0	0					
WEST VIRGINIA	0	0	0	0	0	0	3	0	0	0	2	2	0	3	0	0	2	2	0	0					
WISCONSIN	3	0	0	0	0	0	14	0	3	1	6	7	0	5	0	1	2	0	4	0					
WYOMING	0	1	0	1	0	0	3	1	2	0	3	3	0	2	0	0	3	1	0	0					
WASHINGTON D.C.	0	0	0	0	0	0	0	0	0	0	0	0	0	0	0	1	0	0	0	0					
ARGENTINA	0	0	0	0	0	0	0	0	0	0	0	0	0	0	0	0	0	0	0	0					
BELIZE (BRIT HONDU)	0	0	0	0	0	0	0	0	0	0	0	0	0	0	0	0	0	0	0	0					
BOLIVIA	0	0	0	0	0	0	0	0	0	0	0	0	0	0	0	0	0	0	0	0					

April 2009 Totals by Location Moved From, and By County Moved To

FROM / TO	LEWIS	LINCOLN	MASON	OKANAGON	PACIFIC	PEND OREILLE	PIERCE	SAN JUAN	SKAGIT	SKAMANIA	SNOHOMISH	SPOKANE	STEVENS	THURSTON	WAHKIAKUM	WALLA WALLA	WHATCOM	WHITMAN	YAKIMA	UNKNOWN
BRAZIL	0	0	0	0	1	0	1	0	0	0	2	0	0	0	0	0	0	0	0	0
CHILE	0	0	0	0	0	0	0	0	0	0	0	0	0	0	0	0	0	0	0	0
CANAL ZONE	0	0	0	0	0	0	0	0	0	0	0	0	0	0	0	0	0	0	0	0
COLUMBIA	0	0	0	0	0	0	0	0	0	0	0	0	0	0	0	0	0	0	0	0
COSTA RICA	0	0	0	0	0	0	0	0	0	0	0	0	0	0	0	0	0	0	0	0
EL SALVADOR	0	0	0	0	0	0	0	0	0	0	1	0	0	0	0	0	0	0	0	0
EQUADOR	0	0	0	0	0	0	0	0	0	0	0	0	0	0	0	0	0	0	0	0
GUYANA	0	0	0	0	0	0	0	0	0	0	0	0	0	0	0	0	0	0	0	0
NICARAGUA	0	0	0	0	0	0	0	0	0	0	0	0	0	0	0	0	0	0	0	0
PANAMA	0	0	0	0	0	0	0	0	0	0	0	0	0	0	0	0	0	0	0	0
PERU	0	0	0	0	0	0	0	0	0	0	0	0	0	0	0	0	0	0	0	0
PARAGUAY	0	0	0	0	0	0	0	0	0	0	0	0	0	0	0	0	0	0	0	0
SURINAM	0	0	0	0	0	0	0	0	0	0	0	0	0	0	0	0	0	0	0	0
TRINIDAD	0	0	0	0	0	0	0	0	0	0	0	0	0	0	0	0	0	0	0	0
UPPER VOLTA	0	0	0	0	0	0	0	0	0	0	0	0	0	0	0	0	0	0	0	0
URUGUAY	0	0	0	0	0	0	0	0	0	0	0	0	0	0	0	0	0	0	0	0
VENEZUELA	0	0	0	0	0	0	0	0	0	0	0	0	0	0	0	0	0	0	0	0
ALGERIA	0	0	0	0	0	0	0	0	0	0	0	0	0	0	0	0	0	0	0	0
ANGOLA	0	0	0	0	0	0	0	0	0	0	0	0	0	0	0	0	0	0	0	0
CAMERON	0	0	0	0	0	0	0	0	0	0	0	0	0	0	0	0	0	0	0	0
CHAD	0	0	0	0	0	0	0	0	0	0	0	0	0	0	0	0	0	0	0	0
CONGO	0	0	0	0	0	0	0	0	0	0	0	0	0	0	0	0	0	0	0	0
C. AFRICAN REP.	0	0	0	0	0	0	0	0	0	0	0	0	0	0	0	0	0	0	0	0
BOTSWANA	0	0	0	0	0	0	0	0	0	0	0	0	0	0	0	0	0	0	0	0
BURUNDI	0	0	0	0	0	0	0	0	0	0	0	0	0	0	0	0	0	0	0	0
DAHOMEY	0	0	0	0	0	0	0	0	0	0	0	0	0	0	0	0	0	0	0	0
EQ. GUINEA	0	0	0	0	0	0	0	0	0	0	0	0	0	0	0	0	0	0	0	0
EGYPT	0	0	0	0	0	0	0	0	0	0	0	0	0	0	0	0	0	0	0	0
ETHIOPIA	0	0	0	0	0	0	0	0	0	0	0	0	0	0	0	0	0	0	0	0
GABON	0	0	0	0	0	0	0	0	0	0	0	0	0	0	0	0	0	0	0	0
GAMBIA	0	0	0	0	0	0	0	0	0	0	0	0	0	0	0	0	0	0	0	0
GHANA	0	0	0	0	0	0	0	0	0	0	0	0	0	0	0	0	0	0	0	0
GUINEA	0	0	0	0	0	0	0	0	0	0	0	0	0	0	0	0	0	0	0	0
IVORY COAST	0	0	0	0	0	0	0	0	0	0	0	0	0	0	0	0	0	0	0	0
KENYA	0	0	0	0	0	0	0	0	0	0	0	0	0	0	0	0	0	2	0	0
LIBYA	0	0	0	0	0	0	0	0	0	0	0	0	0	0	0	0	0	2	0	0
LIBERIA	0	0	0	0	0	0	0	0	0	0	0	0	0	0	0	0	0	0	0	0
MALAWI	0	0	0	0	0	0	0	0	0	0	0	0	0	0	0	0	0	0	0	0
MALAGASY	0	0	0	0	0	0	0	0	0	0	0	0	0	0	0	0	0	0	0	0
MORROCCO	0	0	0	0	0	0	0	0	0	0	0	0	0	0	0	0	0	0	0	0
MAURITANIA	0	0	0	0	0	0	0	0	0	0	0	0	0	0	0	0	0	0	0	0
MALI	0	0	0	0	0	0	0	0	0	0	0	0	0	0	0	0	0	0	0	0
NIGER	0	0	0	0	0	0	0	0	0	0	0	0	0	0	0	0	0	0	0	0
NIGERIA	0	0	0	0	0	0	0	0	0	0	0	0	0	0	0	0	0	0	0	0
RHODESIA	0	0	0	0	0	0	0	0	0	0	0	0	0	0	0	0	0	0	0	0
RWANDA	0	0	0	0	0	0	0	0	0	0	0	0	0	0	0	0	0	0	0	0
SOUTH AFRICA	0	0	0	0	0	0	0	0	0	0	0	0	0	0	0	0	0	0	0	0
SOUTH WEST AFRICA	0	0	0	0	0	0	0	0	0	0	0	0	0	0	0	0	0	0	0	0
SIERRA LEONE	0	0	0	0	0	0	0	0	0	0	0	0	0	0	0	0	0	0	0	0
SWAZILAND	0	0	0	0	0	0	0	0	0	0	0	0	0	0	0	0	0	0	0	0
SENEGAL	0	0	0	0	0	0	0	0	0	0	0	0	0	0	0	0	0	0	0	0
SOMALI REPUBLIC	0	0	0	0	0	0	0	0	0	0	0	0	0	0	0	0	0	0	0	0
SUDAN	0	0	0	0	0	0	0	0	0	0	0	0	0	0	0	0	0	0	0	0
TOGO	0	0	0	0	0	0	0	0	0	0	0	0	0	0	0	0	0	0	0	0
TUNISIA	0	0	0	0	0	0	0	0	0	0	0	0	0	0	0	0	0	0	0	0
TANZANIA	0	0	0	0	0	0	0	0	0	0	0	0	0	0	0	0	0	0	0	0

April 2009 Totals by Location Moved From, and By County Moved To

FROM / TO	LEWIS	LINCOLN	MASON	OKANAGON	PACIFIC	PEND OREILLE	PIERCE	SAN JUAN	SKAGIT	SKAMANIA	SNOHOMISH	SPOKANE	STEVENS	THURSTON	WAHKIAKUM	WALLA WALLA	WHATCOM	WHITMAN	YAKIMA	UNKNOWN
UGANDA	0	0	0	0	0	0	0	0	0	0	0	0	0	0	0	0	0	0	0	0
ZAIRE	0	0	0	0	0	0	0	0	0	0	0	0	0	0	0	0	0	0	0	0
AFGHANISTAN	0	0	0	0	0	0	0	0	0	0	0	0	0	0	0	0	0	0	0	0
BANGLADESH	0	0	0	0	0	0	0	0	0	0	0	0	0	0	0	0	0	0	0	0
BHUTAN	0	0	0	0	0	0	0	0	0	0	0	0	0	0	0	0	0	0	0	0
BURMA	0	0	0	0	0	0	0	0	0	0	0	0	0	0	0	0	0	0	0	0
BAHRAIN	0	0	0	0	0	0	0	0	0	0	0	0	0	0	0	0	0	0	0	0
CEYLON (SRI LANKA)	0	0	0	0	0	0	0	0	0	0	0	0	0	0	0	0	0	0	0	0
CHINA	0	0	0	0	0	0	0	0	0	0	0	0	0	0	0	0	0	1	0	0
CAMBODIA	0	0	0	0	0	0	0	0	0	0	0	0	0	0	0	0	0	0	0	0
CYPRUS	0	0	0	0	0	0	0	0	0	0	0	0	0	0	0	0	0	0	0	0
JORDAN	0	0	0	0	0	0	0	0	0	0	0	0	0	0	0	0	0	0	0	0
JAPAN	0	0	0	0	0	0	0	0	0	0	1	0	0	0	0	0	0	0	0	0
KUWAIT	0	0	0	0	0	0	0	0	0	0	0	0	0	0	0	0	0	0	0	0
IRAN	0	0	0	0	0	0	0	0	0	0	0	0	0	0	0	0	0	0	0	0
ISRAEL	0	0	0	0	0	0	0	0	0	0	0	0	0	0	0	0	0	0	0	0
INDIA	0	0	0	0	0	0	2	0	0	0	0	0	0	0	0	0	0	0	0	0
IRAQ	0	0	0	0	0	0	0	0	0	0	0	0	0	0	0	0	0	0	0	0
INDONESIA	0	0	0	0	0	0	0	0	0	0	0	0	0	0	0	0	0	0	0	0
KOREA	0	0	0	0	0	0	1	0	0	0	0	0	0	0	0	0	0	1	0	0
LAOS	0	0	0	0	0	0	0	0	0	0	0	0	0	0	0	0	0	0	0	0
LEBANON	0	0	0	0	0	0	0	0	0	0	0	0	0	0	0	0	0	0	0	0
MALAYSIA	0	0	0	0	0	0	0	0	0	0	0	0	0	0	0	0	0	0	0	0
MONGOLIA	0	0	0	0	0	0	0	1	0	0	1	0	0	0	0	0	0	0	0	0
NEPAL	0	0	0	0	0	0	0	0	0	0	0	0	0	0	0	0	0	0	0	0
OMAN	0	0	0	0	0	0	0	0	0	0	0	0	0	0	0	0	0	0	0	0
PAKISTAN	0	0	0	0	0	0	0	0	0	0	0	0	0	0	0	0	0	0	0	0
QATAR	0	0	0	0	0	0	0	0	0	0	0	0	0	0	0	0	0	0	0	0
SIKKIM	0	0	0	0	0	0	0	0	0	0	0	0	0	0	0	0	0	0	0	0
SYRIA	0	0	0	0	0	0	0	0	0	0	0	0	0	0	0	0	0	0	0	0
SAUDI ARABIA	0	0	0	0	0	0	0	0	0	0	0	0	0	0	0	0	0	0	0	0
SINGAPORE	0	0	0	0	0	0	0	0	0	0	0	0	0	0	0	0	0	0	0	0
TAIWAN	0	0	0	0	0	0	0	0	0	0	0	0	0	0	0	0	0	0	0	0
THAILAND	0	0	0	0	0	0	0	0	0	0	2	0	0	0	0	0	0	0	0	0
TURKEY	0	0	0	0	0	0	0	0	0	0	0	0	0	0	0	0	0	0	0	0
USSR	0	0	0	0	0	0	0	0	0	0	0	0	0	0	0	0	0	0	0	0
UNITED ARAB EMIRATE	0	0	0	0	0	0	0	0	0	0	0	0	0	0	0	0	0	0	0	0
VIETNAM	0	0	0	0	0	0	0	0	0	0	0	0	0	0	0	0	0	0	0	0
YEMEN	0	0	0	0	0	0	0	0	0	0	0	0	0	0	0	0	0	0	0	0
AUSTRIA	0	0	0	0	0	0	0	0	0	0	0	0	0	0	0	0	0	0	0	0
BULGARIA	0	0	0	0	0	0	0	0	0	0	0	0	0	0	0	0	0	0	0	0
BELGIUM	0	0	0	0	0	0	0	0	0	0	0	0	0	0	0	0	0	0	0	0
DENMARK	0	0	0	0	0	0	0	0	0	0	0	0	0	0	0	0	0	0	0	0
ENGLAND	0	0	0	0	0	0	0	0	0	0	0	0	0	0	0	1	0	0	0	0
FRANCE	0	0	0	0	0	0	0	0	0	0	0	0	0	0	0	0	0	0	0	0
FINLAND	0	0	0	0	0	0	0	0	0	0	0	0	0	0	0	0	0	0	0	0
CZECHOSLAVAKIA	0	0	0	0	0	0	0	0	0	0	0	0	0	0	0	0	0	0	0	0
GREECE	0	0	0	0	0	0	0	0	0	0	0	0	0	0	0	0	0	0	0	0
GERMANY	0	0	1	0	0	0	7	0	0	0	0	0	0	3	0	0	1	0	1	0
IRELAND	0	0	0	0	0	0	0	0	0	0	0	0	0	0	0	0	0	0	0	0
ITALY	0	0	0	0	0	0	0	0	0	1	0	0	0	0	0	0	0	0	0	0
HUNGARY	0	0	0	0	0	0	0	0	0	0	0	0	0	0	0	0	0	0	0	0
LUXEMBOURG	0	0	0	0	0	0	0	0	0	0	0	0	0	0	0	0	0	0	0	0
NETHERLANDS	0	0	0	0	0	0	0	0	0	0	0	0	0	0	0	0	0	0	0	0
NORWAY	0	0	0	0	0	0	0	0	0	0	0	0	0	0	0	0	0	0	0	0
POLAND	0	0	0	0	0	0	0	0	0	0	0	0	0	0	0	0	0	0	0	0

April 2009 Totals by Location Moved From, and By County Moved To

FROM / TO	LEWIS	LINCOLN	MASON	OKANAGON	PACIFIC	PEND OREILLE	PIERCE	SAN JUAN	SKAGIT	SKAMANIA	SNOHOMISH	SPOKANE	STEVENS	THURSTON	WAHKIAKUM	WALLA WALLA	WHATCOM	WHITMAN	YAKIMA	UNKNOWN
SPAIN	0	0	0	0	0	0	0	0	0	0	0	0	0	0	0	0	0	0	0	0
SWITZERLAND	0	0	0	0	0	0	0	0	0	0	0	0	0	0	0	0	0	0	0	0
SWEDEN	0	0	0	0	0	0	0	0	0	0	0	0	0	0	0	0	0	0	0	0
ROMANIA	0	0	0	0	0	0	0	0	0	0	0	0	0	0	0	0	0	0	0	0
YUGOSLAVIA	0	0	0	0	0	0	0	0	0	0	0	0	0	0	0	0	0	0	0	0
ALBANIA	0	0	0	0	0	0	0	0	0	0	0	0	0	0	0	0	0	0	0	0
ANDORRA	0	0	0	0	0	0	0	0	0	0	0	0	0	0	0	0	0	0	0	0
AMERICAN SAMOA	0	0	0	0	0	0	4	0	0	0	0	0	0	2	0	0	0	0	0	0
BORNEO	0	0	0	0	0	0	0	0	0	0	0	0	0	0	0	0	0	0	0	0
CUBA	0	0	0	0	0	0	0	0	0	0	0	0	0	0	0	0	0	0	0	0
BERMUDA	0	0	0	0	0	0	0	0	0	0	0	0	0	0	0	0	0	0	0	0
DOMINICAN REPUBLIC	0	0	0	0	0	0	0	0	0	0	0	0	0	0	0	0	0	0	0	0
FIJI	0	0	0	0	0	0	0	0	0	0	0	0	0	0	0	0	0	0	0	0
GUAM	0	0	0	0	0	0	4	0	0	0	2	2	0	4	0	0	0	0	0	0
HAITI	0	0	0	0	0	0	0	0	0	0	0	0	0	0	0	0	0	0	0	0
JAMAICA	0	0	0	0	0	0	0	0	0	0	0	0	0	0	0	0	0	0	0	0
NEW ZEALAND	0	0	0	0	0	0	0	0	0	0	0	0	0	0	0	0	0	0	0	0
PORTUGAL	0	0	0	0	0	0	0	0	0	0	0	0	0	0	0	0	0	0	0	0
PHILIPPINES	0	0	0	0	0	0	1	0	0	0	0	0	0	0	0	0	0	0	0	0
PUERTO RICO	0	0	0	0	0	0	6	0	0	0	1	0	0	1	0	0	0	1	0	0
TAHITI	0	0	0	0	0	0	0	0	0	0	0	0	0	0	0	0	0	0	0	0
TONGA	0	0	0	0	0	0	0	0	0	0	0	0	0	0	0	0	0	0	0	0
VIRGIN ISLANDS	0	0	0	0	0	0	0	0	0	0	0	0	0	0	0	0	0	0	0	0
WEST SAMOA	0	0	0	0	0	0	0	0	0	0	0	0	0	0	0	0	0	0	0	0
AUSTRALIA	0	0	0	0	0	0	0	0	0	0	0	0	0	0	0	0	0	0	0	0
ANTARTICA	0	0	0	0	0	0	0	0	0	0	0	0	0	0	0	0	0	0	0	0
ICELAND	0	0	0	0	0	0	0	0	0	0	0	0	0	0	0	0	0	0	0	0
GREENLAND	0	0	0	0	0	0	0	0	0	0	0	0	0	0	0	0	0	0	0	0
MEXICO	2	0	2	4	1	0	2	0	2	0	12	0	0	1	0	3	0	0	7	0
ALBERTA	0	0	0	0	0	0	1	0	0	0	0	0	0	0	0	0	0	1	0	0
BRITISH COLUMBIA	0	0	0	0	0	0	2	0	2	0	4	0	0	2	0	0	8	0	0	0
MANITOBA	0	0	0	0	0	0	0	0	0	0	0	0	0	0	0	0	0	0	0	0
NEW BRUNSWICK	0	0	0	0	0	0	0	0	0	0	0	0	0	0	0	0	0	0	0	0
NEWFOUNDLAND	0	0	0	0	0	0	0	0	0	0	0	0	0	0	0	0	0	0	0	0
NOVA SCOTIA	0	0	0	0	0	0	0	0	0	0	0	0	0	0	0	0	0	0	0	0
ONTARIO	0	0	0	0	0	0	0	0	0	0	0	0	0	0	0	0	0	0	0	0
PRINCE EDWARD IS.	0	0	0	0	0	0	1	0	0	0	0	0	0	0	0	0	0	0	0	0
QUEBEC	0	0	0	0	0	0	0	0	0	0	0	0	0	1	0	0	0	0	0	0
SASKATCHEWAN	0	0	0	0	0	0	0	0	0	0	0	0	0	0	0	0	0	0	0	0
NORTHWEST TERRITORY	0	0	0	0	0	0	0	0	0	0	0	0	0	0	0	0	0	0	0	0
YUKON TERRITORY	0	0	0	0	0	0	0	0	0	0	0	0	0	0	0	0	0	0	0	0
UNKNOWN	1	0	2	0	0	0	6	0	1	0	7	1	0	3	0	0	2	2	3	0
** TOTAL **	91	11	56	46	34	13	938	31	110	18	676	510	38	359	4	111	242	64	235	7