



STATE OF WASHINGTON  
DEPARTMENT OF LICENSING  
PO Box 9035 • Olympia, Washington 98507-9035

January 5, 2007

**Washington State Drivers Report for December 2006**

The monthly report for December 2006 tabulates Washington drivers' license (WDL) activity. The table below summarizes WDL migration in and out of Washington State. It also identifies the top three in-migration states. This data generates a net increase series. The reported month of surrendered WDLs is a reflection of the month Washington received the information and not when the driver left Washington. Therefore, the net increase is an estimate of net migration. Beginning with the April 1998 data, this report and supporting documentation are available via e-mail at the address below. Our formats are PDF for the report and Excel for the data files.

During the month of December (November 25, 2006 to December 30, 2006), a total of 13,285 out-of-state drivers obtained a Washington driver license. This is 552 less than the 13,837 who obtained licenses in December of 2005 (November 26, 2005 to December 30, 2005). Net migration to Washington for December 2006 increased by 6,879 drivers. For the 12 months ending December 2006, 164,127 out-of-state drivers obtained a Washington driver license, almost an 11 percent increase over the same month last year.

The table below displays data using a 12-month moving sum to help smooth out the monthly variance and reveal the trend. The graphs on the attached file display the results of this smoothing. The first graph plots new drivers moving into Washington as well as the net increase.

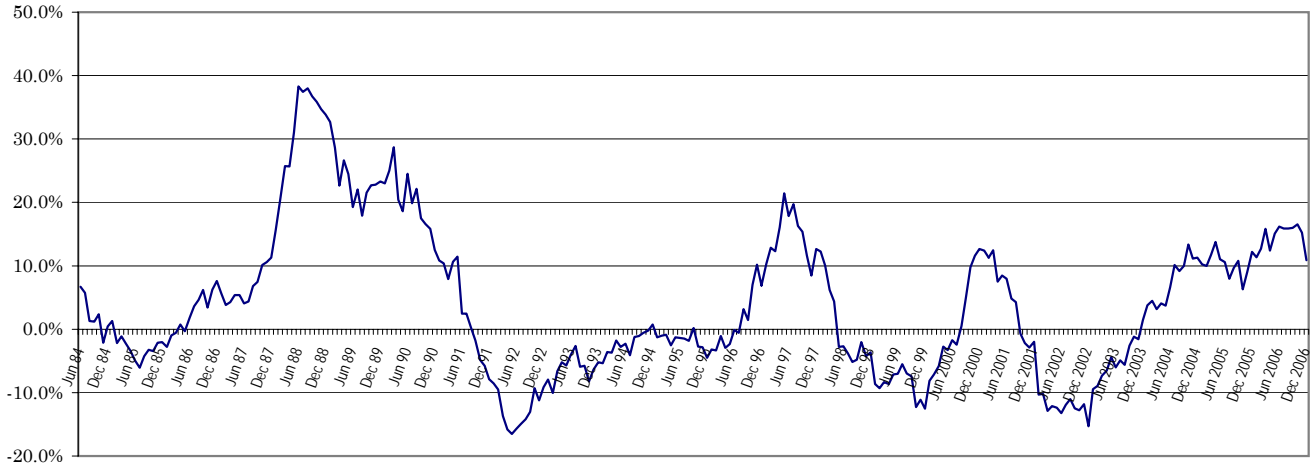
	Dec 2006			Year Ending Dec 2006		
	2005	2006	% Change	2005	2006	% Change
<b>Total Drivers In</b>	<b>13,837</b>	<b>13,285</b>	<b>-4.0</b>	<b>148,013</b>	<b>164,127</b>	10.9
<b>California</b>	3,415	2,734	-19.9	35,223	37,565	6.6
<b>Oregon</b>	1,884	1,630	-13.5	18,332	20,526	12.0
<b>Texas</b>	677	610	-9.9	6,162	7,907	28.3
<b>Returned WDL</b>	5,289	6,406	21.1	73,137	73,715	0.8
<b>Net Increase</b>	8,548	6,879	-19.5	74,876	90,412	20.7

Alice Vogel, Economic Analyst  
Department of Licensing  
Research and Planning Office  
Highways and Licensing Building  
Olympia, WA 98501-48001  
(360) 902-3986  
FAX: (360) 753-7500  
E-Mail: avogel@dol.wa.gov

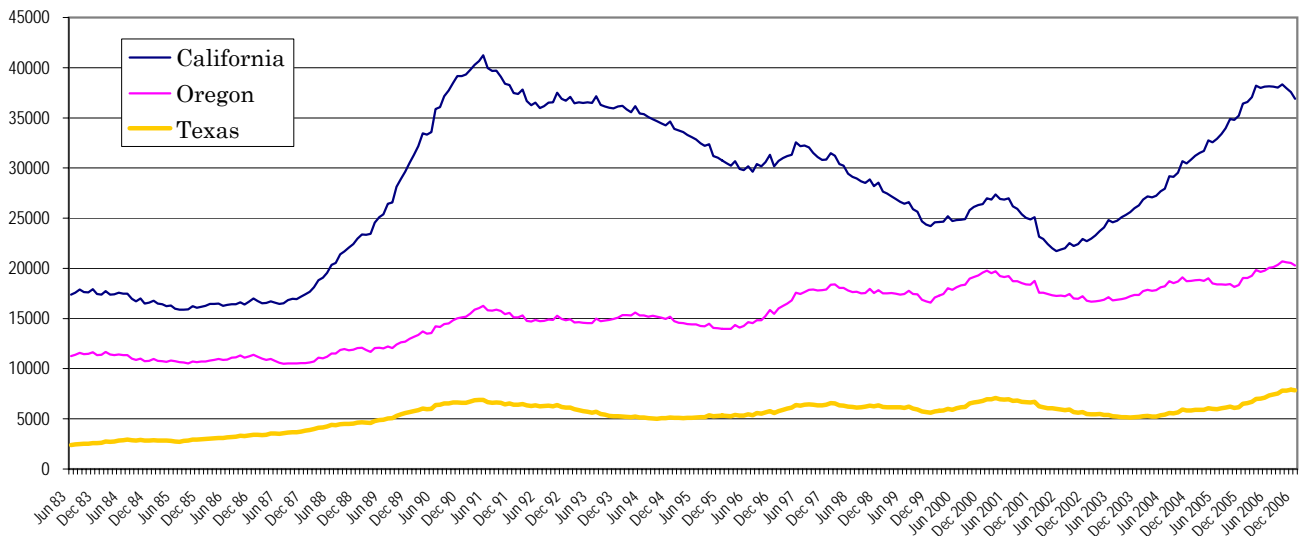
**Washington State Driver's Licenses  
(12 Month Moving Sum)**



**% Change Year Ago  
(12 Month Moving Sum)**



**Largest States  
(12 Months Moving Sum)**



## Net Increase States

Month: **December 2006**

<u>State</u>	<u>IN</u>	<u>OUT</u>	<u>Net in Migration</u>
ALABAMA	51	92	(41)
ALASKA	279	266	13
ARIZONA	490	48	442
ARKANSAS	56	91	(35)
CALIFORNIA	2734	204	2,530
COLORADO	374	0	374
CONNECTICUT	59	9	50
DELAWARE	24	11	13
FLORIDA	705	253	452
GEORGIA	241	337	(96)
HAWAII	222	115	107
IDAHO	481	529	(48)
ILLINOIS	264	135	129
INDIANA	121	75	46
IOWA	57	32	25
KANSAS	96	50	46
KENTUCKY	84	43	41
LOUISIANA	77	66	11
MAINE	34	0	34
MARYLAND	106	90	16
MASSACHUSETTS	132	0	132
MICHIGAN	280	73	207
MINNESOTA	159	91	68
MISSISSIPPI	39	49	(10)
MISSOURI	142	103	39
MONTANA	258	328	(70)
NEBRASKA	44	10	34
NEVADA	290	263	27
NEW HAMPSHIRE	42	10	32
NEW JERSEY	145	50	95
NEW MEXICO	90	0	90
NEW YORK	310	199	111
NORTH CAROLINA	235	80	155
NORTH DAKOTA	32	22	10
OHIO	212	87	125
OKLAHOMA	90	68	22
OREGON	1630	1832	(202)
PENNSYLVANIA	153	157	(4)
RHODE ISLAND	17	28	(11)
SOUTH CAROLINA	57	146	(89)
SOUTH DAKOTA	53	36	17
TENNESSEE	256	77	179
TEXAS	610	0	610
UTAH	268	0	268
VERMONT	29	27	2
VIRGINIA	234	0	234
WASHINGTON	0	0	0
WEST VIRGINIA	19	19	0
WISCONSIN	113	83	30
WYOMING	43	57	(14)
WASH. DC	26	21	5
<b>Total States</b>	<b>12,563</b>	<b>6,362</b>	<b>6,201</b>

**December 2006 Totals by Location Moved From, and By County Moved To**

FROM/TO	TOTAL	GRAYS																			
		ADAMS	ASOTIN	BENTON	CHELAN	CLALLAM	CLARK	COLUMBIA	COWLITZ	DOUGLAS	FERRY	FRANKLIN	GARFIELD	GRANT	HARBOR	ISLAND	JEFFERSON	KING	KITSAP	KITTITAS	KLCKITAT
ALABAMA	51	0	0	2	0	0	2	0	0	0	0	0	0	0	3	1	0	10	3	0	0
ALASKA	279	0	1	5	3	15	21	0	2	1	0	0	0	0	6	6	0	65	5	1	4
ARIZONA	490	0	1	14	2	13	35	0	7	1	3	4	0	5	2	5	1	169	16	1	1
ARKANSAS	56	1	0	1	0	2	2	0	3	1	0	0	0	0	0	3	0	15	5	0	0
CALIFORNIA	2734	3	4	66	18	45	215	0	36	8	5	33	0	23	15	46	28	947	120	7	8
COLORADO	374	1	1	7	6	5	17	0	3	2	3	1	0	3	2	5	4	146	19	2	1
CONNECTICUT	59	0	0	2	1	0	2	0	0	0	0	0	0	0	0	0	2	29	3	1	0
DELAWARE	24	0	0	1	1	0	0	0	0	0	0	0	0	0	0	0	0	5	0	0	0
FLORIDA	705	0	0	6	7	3	40	0	0	1	0	9	0	3	2	21	2	333	31	0	0
GEORGIA	241	0	1	1	1	0	9	0	0	0	0	2	0	0	0	2	0	124	16	0	0
HAWAII	222	0	1	1	1	2	15	0	2	0	0	0	0	0	0	6	2	73	22	0	1
IDAHO	481	3	44	16	4	2	21	1	7	1	0	4	0	6	5	4	2	75	8	2	3
ILLINOIS	264	0	0	1	0	4	20	0	4	1	0	2	0	2	0	2	0	116	11	0	1
INDIANA	121	0	0	1	0	1	5	0	3	1	0	0	0	0	0	2	3	58	2	0	0
IOWA	57	0	0	1	0	1	2	0	2	1	0	0	0	0	0	2	0	20	3	2	0
KANSAS	96	0	0	1	0	0	9	0	1	0	0	1	0	3	0	3	1	31	4	0	0
KENTUCKY	84	0	0	1	1	0	8	0	0	0	0	0	0	1	0	0	0	30	1	0	0
LOUISIANA	77	1	0	3	1	1	1	0	3	0	0	0	0	0	2	0	0	22	5	1	0
MAINE	34	2	0	1	2	1	1	0	0	0	0	0	0	0	0	2	1	13	0	0	0
MARYLAND	106	0	0	3	0	0	4	0	1	0	0	0	0	1	1	2	0	43	11	0	0
MASSACHUSETTS	132	0	0	1	0	0	1	0	0	0	0	0	0	0	0	4	2	80	6	0	0
MICHIGAN	280	0	0	4	0	3	20	0	4	1	0	1	0	0	0	1	2	122	5	2	0
MINNESOTA	159	0	0	0	1	1	20	0	2	0	0	0	0	0	0	1	2	66	2	2	0
MISSISSIPPI	39	0	0	0	0	0	8	0	0	0	0	0	0	0	0	0	0	13	4	1	0
MISSOURI	142	0	1	4	0	0	8	0	1	0	0	0	0	1	1	2	0	46	13	1	1
MONTANA	258	0	2	3	2	4	20	0	4	0	0	3	1	6	1	3	7	64	9	1	0
NEBRASKA	44	0	0	0	0	2	2	0	0	0	0	2	0	0	0	0	2	12	3	0	0
NEVADA	290	0	2	7	2	5	20	1	6	2	1	0	0	6	2	6	1	70	17	2	0
NEW HAMPSHIRE	42	0	0	1	0	0	4	0	1	0	0	1	0	0	0	2	0	17	1	0	0
NEW JERSEY	145	0	1	0	1	1	4	0	1	0	0	0	0	1	3	4	0	78	4	0	0
NEW MEXICO	90	0	1	1	2	1	4	0	1	0	0	1	0	2	4	1	0	23	6	0	0
NEW YORK	310	0	0	3	0	1	18	0	7	0	0	2	0	0	0	2	3	166	6	0	0
NORTH CAROLINA	235	0	0	13	0	2	6	2	1	2	0	7	0	3	2	1	0	93	8	0	1
NORTH DAKOTA	32	0	0	0	0	1	1	0	0	1	0	1	0	3	0	0	0	12	0	0	1
OHIO	212	0	1	5	3	1	10	0	1	0	0	0	0	0	3	4	2	80	12	1	1
OKLAHOMA	90	0	0	2	0	1	5	0	0	0	0	0	0	2	0	0	1	26	1	0	0
OREGON	1630	2	5	53	6	18	610	5	58	1	8	14	0	17	8	11	7	268	41	4	23
PENNSYLVANIA	153	2	0	5	1	1	5	0	0	0	0	0	0	0	3	3	1	73	7	0	1
RHODE ISLAND	17	0	0	0	0	0	0	0	0	0	0	0	0	0	0	0	0	5	4	0	2
SOUTH CAROLINA	57	0	0	1	0	2	1	0	0	0	0	1	0	0	1	0	1	17	7	1	0
SOUTH DAKOTA	53	0	0	1	1	1	4	0	0	0	0	0	0	3	0	0	0	11	4	0	0
TENNESSEE	256	0	0	1	1	2	9	0	3	0	0	2	0	3	3	0	0	145	5	0	0
TEXAS	610	2	1	13	3	20	38	0	4	1	1	5	0	5	5	6	3	242	22	0	1
UTAH	268	0	0	20	2	2	12	0	5	1	0	5	0	1	4	7	3	84	22	1	0
VERMONT	29	0	0	0	1	0	2	0	0	0	0	0	0	0	0	0	3	10	3	0	0
VIRGINIA	234	0	0	7	1	1	15	0	3	0	0	1	0	1	0	4	1	110	12	1	0
WASHINGTON	0	0	0	0	0	0	0	0	0	0	0	0	0	0	0	0	0	0	0	0	0
WEST VIRGINIA	19	0	0	0	0	0	1	0	0	0	0	0	0	0	0	0	0	5	2	0	0
WISCONSIN	113	0	0	1	0	0	6	0	0	0	0	1	0	4	3	1	0	52	7	2	0
WYOMING	43	0	0	1	0	1	0	0	1	0	0	1	0	0	2	1	0	8	4	0	0
WASHINGTON D.C.	26	0	0	0	0	0	0	0	0	0	0	0	0	0	0	1	0	18	0	0	0
ARGENTINA	2	0	0	0	0	0	2	0	0	0	0	0	0	0	0	0	0	0	0	0	0
BELIZE (BRIT HONDU)	0	0	0	0	0	0	0	0	0	0	0	0	0	0	0	0	0	0	0	0	0
BOLIVIA	3	0	0	0	2	0	0	0	0	0	0	0	0	0	0	0	0	1	0	0	0

December 2006 Totals by Location Moved From, and By County Moved To

FROM / TO	TOTAL	GRAYS																			
		ADAMS	ASOTIN	BENTON	CHELAN	CLALLAM	CLARK	COLUMBIA	COWLITZ	DOUGLAS	FERRY	FRANKLIN	GARFIELD	GRANT	HARBOR	ISLAND	JEFFERSON	KING	KITSAP	KITTITAS	KLCKITAT
BRAZIL	51	0	0	0	0	0	2	0	0	0	0	0	0	0	0	0	0	41	1	0	0
CHILE	1	0	0	0	0	0	1	0	0	0	0	0	0	0	0	0	0	0	0	0	0
CANAL ZONE	0	0	0	0	0	0	0	0	0	0	0	0	0	0	0	0	0	0	0	0	0
COLUMBIA	3	0	0	0	0	0	0	0	0	0	0	0	0	0	0	0	0	3	0	0	0
COSTA RICA	2	0	0	0	0	0	0	0	0	0	0	0	0	0	0	0	0	2	0	0	0
EL SALVADOR	11	0	0	0	1	0	0	0	0	0	0	0	0	0	0	0	0	7	0	0	0
EQUADOR	28	0	0	0	1	0	1	0	0	0	0	0	0	0	0	0	0	23	0	0	0
GUYANA	0	0	0	0	0	0	0	0	0	0	0	0	0	0	0	0	0	0	0	0	0
NICARAGUA	2	0	0	0	0	0	1	0	0	0	0	0	0	0	0	0	0	0	0	0	0
PANAMA	2	0	0	0	0	0	0	0	0	0	0	0	0	0	0	0	0	0	0	0	0
PERU	6	0	0	0	1	0	1	0	0	0	0	0	0	0	0	0	0	4	0	0	0
PARAGUAY	0	0	0	0	0	0	0	0	0	0	0	0	0	0	0	0	0	0	0	0	0
SURINAM	0	0	0	0	0	0	0	0	0	0	0	0	0	0	0	0	0	0	0	0	0
TRINIDAD	1	0	0	0	0	0	0	0	0	0	0	0	0	0	0	0	0	1	0	0	0
UPPER VOLTA	0	0	0	0	0	0	0	0	0	0	0	0	0	0	0	0	0	0	0	0	0
URUGUAY	1	0	0	0	0	0	0	0	0	0	0	0	0	0	0	0	0	1	0	0	0
VENEZUELA	1	0	0	0	0	0	0	0	0	0	0	0	0	0	0	0	0	1	0	0	0
ALGERIA	0	0	0	0	0	0	0	0	0	0	0	0	0	0	0	0	0	0	0	0	0
ANGOLA	0	0	0	0	0	0	0	0	0	0	0	0	0	0	0	0	0	0	0	0	0
CAMERON	0	0	0	0	0	0	0	0	0	0	0	0	0	0	0	0	0	0	0	0	0
CHAD	0	0	0	0	0	0	0	0	0	0	0	0	0	0	0	0	0	0	0	0	0
CONGO	0	0	0	0	0	0	0	0	0	0	0	0	0	0	0	0	0	0	0	0	0
C. AFRICAN REP.	0	0	0	0	0	0	0	0	0	0	0	0	0	0	0	0	0	0	0	0	0
BOTSWANA	0	0	0	0	0	0	0	0	0	0	0	0	0	0	0	0	0	0	0	0	0
BURUNDI	0	0	0	0	0	0	0	0	0	0	0	0	0	0	0	0	0	0	0	0	0
DAHOMEY	0	0	0	0	0	0	0	0	0	0	0	0	0	0	0	0	0	0	0	0	0
EQ. GUINEA	0	0	0	0	0	0	0	0	0	0	0	0	0	0	0	0	0	0	0	0	0
EGYPT	0	0	0	0	0	0	0	0	0	0	0	0	0	0	0	0	0	0	0	0	0
ETHIOPIA	1	0	0	0	0	0	0	0	0	0	0	0	0	0	0	0	0	1	0	0	0
GABON	0	0	0	0	0	0	0	0	0	0	0	0	0	0	0	0	0	0	0	0	0
GAMBIA	0	0	0	0	0	0	0	0	0	0	0	0	0	0	0	0	0	0	0	0	0
GHANA	0	0	0	0	0	0	0	0	0	0	0	0	0	0	0	0	0	0	0	0	0
GUINEA	1	0	0	0	0	0	0	0	0	0	0	0	0	0	0	0	0	1	0	0	0
IVORY COAST	0	0	0	0	0	0	0	0	0	0	0	0	0	0	0	0	0	0	0	0	0
KENYA	3	0	0	0	0	0	0	0	0	0	0	0	0	0	0	0	0	1	0	0	0
LIBYA	0	0	0	0	0	0	0	0	0	0	0	0	0	0	0	0	0	0	0	0	0
LIBERIA	0	0	0	0	0	0	0	0	0	0	0	0	0	0	0	0	0	0	0	0	0
MALAWI	1	0	0	0	0	0	0	0	0	0	0	0	0	0	0	0	0	1	0	0	0
MALAGASY	1	0	0	0	0	0	0	0	0	0	0	0	0	0	1	0	0	0	0	0	0
MORROCCO	0	0	0	0	0	0	0	0	0	0	0	0	0	0	0	0	0	0	0	0	0
MAURITANIA	0	0	0	0	0	0	0	0	0	0	0	0	0	0	0	0	0	0	0	0	0
MALI	0	0	0	0	0	0	0	0	0	0	0	0	0	0	0	0	0	0	0	0	0
NIGER	0	0	0	0	0	0	0	0	0	0	0	0	0	0	0	0	0	0	0	0	0
NIGERIA	1	0	0	0	0	0	0	0	0	0	0	0	0	0	0	0	0	0	0	0	0
RHODESIA	0	0	0	0	0	0	0	0	0	0	0	0	0	0	0	0	0	0	0	0	0
RWANDA	0	0	0	0	0	0	0	0	0	0	0	0	0	0	0	0	0	0	0	0	0
SOUTH AFRICA	0	0	0	0	0	0	0	0	0	0	0	0	0	0	0	0	0	0	0	0	0
SOUTH WEST AFRICA	0	0	0	0	0	0	0	0	0	0	0	0	0	0	0	0	0	0	0	0	0
SIERRA LEONE	0	0	0	0	0	0	0	0	0	0	0	0	0	0	0	0	0	0	0	0	0
SWAZILAND	1	0	0	0	0	0	0	0	0	0	0	0	0	0	0	0	0	1	0	0	0
SENEGAL	0	0	0	0	0	0	0	0	0	0	0	0	0	0	0	0	0	0	0	0	0
SOMALI REPUBLIC	0	0	0	0	0	0	0	0	0	0	0	0	0	0	0	0	0	0	0	0	0
SUDAN	0	0	0	0	0	0	0	0	0	0	0	0	0	0	0	0	0	0	0	0	0
TOGO	0	0	0	0	0	0	0	0	0	0	0	0	0	0	0	0	0	0	0	0	0
TUNISIA	0	0	0	0	0	0	0	0	0	0	0	0	0	0	0	0	0	0	0	0	0
TANZANIA	0	0	0	0	0	0	0	0	0	0	0	0	0	0	0	0	0	0	0	0	0

December 2006 Totals by Location Moved From, and By County Moved To

FROM / TO	TOTAL	GRAYS																			
		ADAMS	ASOTIN	BENTON	CHELAN	CLALLAM	CLARK	COLUMBIA	COWLITZ	DOUGLAS	FERRY	FRANKLIN	GARFIELD	GRANT	HARBOR	ISLAND	JEFFERSON	KING	KITSAP	KITTITAS	KLCKITAT
UGANDA	0	0	0	0	0	0	0	0	0	0	0	0	0	0	0	0	0	0	0	0	0
ZAIRE	0	0	0	0	0	0	0	0	0	0	0	0	0	0	0	0	0	0	0	0	0
AFGHANISTAN	0	0	0	0	0	0	0	0	0	0	0	0	0	0	0	0	0	0	0	0	0
BANGLADESH	0	0	0	0	0	0	0	0	0	0	0	0	0	0	0	0	0	0	0	0	0
BHUTAN	0	0	0	0	0	0	0	0	0	0	0	0	0	0	0	0	0	0	0	0	0
BURMA	0	0	0	0	0	0	0	0	0	0	0	0	0	0	0	0	0	0	0	0	0
BAHRAIN	0	0	0	0	0	0	0	0	0	0	0	0	0	0	0	0	0	0	0	0	0
CEYLON (SRI LANKA)	0	0	0	0	0	0	0	0	0	0	0	0	0	0	0	0	0	0	0	0	0
CHINA	4	0	0	0	0	0	1	0	0	0	0	0	0	0	0	0	0	1	0	0	0
CAMBODIA	0	0	0	0	0	0	0	0	0	0	0	0	0	0	0	0	0	0	0	0	0
CYPRUS	0	0	0	0	0	0	0	0	0	0	0	0	0	0	0	0	0	0	0	0	0
JORDAN	0	0	0	0	0	0	0	0	0	0	0	0	0	0	0	0	0	0	0	0	0
JAPAN	10	0	0	0	0	0	2	0	0	0	0	0	0	2	0	0	0	4	0	0	0
KUWAIT	0	0	0	0	0	0	0	0	0	0	0	0	0	0	0	0	0	0	0	0	0
IRAN	0	0	0	0	0	0	0	0	0	0	0	0	0	0	0	0	0	0	0	0	0
ISRAEL	0	0	0	0	0	0	0	0	0	0	0	0	0	0	0	0	0	0	0	0	0
INDIA	9	0	0	0	0	0	0	0	0	0	0	0	0	0	0	0	0	7	0	0	0
IRAQ	0	0	0	0	0	0	0	0	0	0	0	0	0	0	0	0	0	0	0	0	0
INDONESIA	3	0	0	0	0	0	0	0	0	0	0	0	0	0	0	0	0	2	0	0	0
KOREA	9	0	0	0	0	0	0	0	0	0	0	0	0	0	0	0	0	5	0	0	0
LAOS	0	0	0	0	0	0	0	0	0	0	0	0	0	0	0	0	0	0	0	0	0
LEBANON	0	0	0	0	0	0	0	0	0	0	0	0	0	0	0	0	0	0	0	0	0
MALAYSIA	0	0	0	0	0	0	0	0	0	0	0	0	0	0	0	0	0	0	0	0	0
MONGOLIA	8	0	0	0	0	0	0	0	0	0	0	0	0	0	0	0	0	8	0	0	0
NEPAL	0	0	0	0	0	0	0	0	0	0	0	0	0	0	0	0	0	0	0	0	0
OMAN	0	0	0	0	0	0	0	0	0	0	0	0	0	0	0	0	0	0	0	0	0
PAKISTAN	1	0	0	0	0	0	0	0	0	0	0	0	0	0	0	0	0	1	0	0	0
QATAR	0	0	0	0	0	0	0	0	0	0	0	0	0	0	0	0	0	0	0	0	0
SIKKIM	0	0	0	0	0	0	0	0	0	0	0	0	0	0	0	0	0	0	0	0	0
SYRIA	0	0	0	0	0	0	0	0	0	0	0	0	0	0	0	0	0	0	0	0	0
SAUDI ARABIA	0	0	0	0	0	0	0	0	0	0	0	0	0	0	0	0	0	0	0	0	0
SINGAPORE	2	0	0	0	0	0	0	0	0	0	0	0	0	0	0	0	0	1	0	0	0
TAIWAN	1	0	0	0	0	0	0	0	0	0	0	0	0	0	0	0	0	0	0	0	0
THAILAND	2	0	0	0	0	0	0	0	0	0	0	0	0	0	0	0	0	2	0	0	0
TURKEY	1	0	0	0	0	0	0	0	0	0	0	0	0	0	0	0	0	1	0	0	0
USSR	8	0	0	0	0	0	2	0	0	0	0	0	0	0	0	0	0	2	0	0	0
UNITED ARAB EMIRATE	0	0	0	0	0	0	0	0	0	0	0	0	0	0	0	0	0	0	0	0	0
VIETNAM	3	0	0	0	0	0	0	0	0	0	0	0	0	0	0	0	0	1	0	0	0
YEMEN	0	0	0	0	0	0	0	0	0	0	0	0	0	0	0	0	0	0	0	0	0
AUSTRIA	2	0	0	0	0	0	0	0	0	0	0	0	0	0	0	0	0	0	2	0	0
BULGARIA	3	0	0	0	0	0	0	0	0	1	0	0	0	0	0	0	0	2	0	0	0
BELGIUM	0	0	0	0	0	0	0	0	0	0	0	0	0	0	0	0	0	0	0	0	0
DENMARK	0	0	0	0	0	0	0	0	0	0	0	0	0	0	0	0	0	0	0	0	0
ENGLAND	7	0	0	0	0	0	0	0	0	0	0	0	0	0	0	0	0	6	0	0	0
FRANCE	4	0	0	0	0	0	0	0	0	0	0	0	0	0	0	0	0	4	0	0	0
FINLAND	1	0	0	0	0	0	0	0	0	0	0	0	0	0	0	0	0	1	0	0	0
CZECHOSLAVAKIA	0	0	0	0	0	0	0	0	0	0	0	0	0	0	0	0	0	0	0	0	0
GREECE	0	0	0	0	0	0	0	0	0	0	0	0	0	0	0	0	0	0	0	0	0
GERMANY	8	0	0	0	0	0	0	0	0	0	0	0	0	0	0	0	0	6	0	0	0
IRELAND	1	0	0	0	0	0	0	0	0	0	0	0	0	0	0	0	0	1	0	0	0
ITALY	2	0	0	0	0	0	0	0	0	0	0	0	0	0	0	0	0	2	0	0	0
HUNGARY	1	0	0	0	0	0	1	0	0	0	0	0	0	0	0	0	0	0	0	0	0
LUXEMBOURG	0	0	0	0	0	0	0	0	0	0	0	0	0	0	0	0	0	0	0	0	0
NETHERLANDS	3	0	0	0	0	0	0	0	0	0	0	0	0	0	0	0	0	3	0	0	0
NORWAY	0	0	0	0	0	0	0	0	0	0	0	0	0	0	0	0	0	0	0	0	0
POLAND	5	0	0	0	0	0	3	0	0	0	0	0	0	0	0	0	0	2	0	0	0

**December 2006 Totals by Location Moved From, and By County Moved To**

FROM / TO	TOTAL	GRAYS																				
		ADAMS	ASOTIN	BENTON	CHELAN	CLALLAM	CLARK	COLUMBIA	COWLITZ	DOUGLAS	FERRY	FRANKLIN	GARFIELD	GRANT	HARBOR	ISLAND	JEFFERSON	KING	KITSAP	KITTITAS	KLCKITAT	
SPAIN	1	0	0	0	0	0	0	0	0	0	0	0	0	0	0	0	0	0	0	0	0	
SWITZERLAND	2	0	0	0	0	0	0	0	0	0	0	0	0	0	0	0	0	0	2	0	0	0
SWEDEN	1	0	0	0	0	0	0	0	0	0	0	0	0	0	0	0	0	0	1	0	0	0
ROMANIA	12	0	0	0	0	0	8	0	0	0	0	0	0	0	0	0	0	2	0	0	0	0
YUGOSLAVIA	0	0	0	0	0	0	0	0	0	0	0	0	0	0	0	0	0	0	0	0	0	0
ALBANIA	0	0	0	0	0	0	0	0	0	0	0	0	0	0	0	0	0	0	0	0	0	0
ANDORRA	0	0	0	0	0	0	0	0	0	0	0	0	0	0	0	0	0	0	0	0	0	0
AMERICAN SAMOA	14	0	0	0	0	0	0	0	0	0	0	0	0	0	0	0	0	9	0	0	0	0
BORNEO	0	0	0	0	0	0	0	0	0	0	0	0	0	0	0	0	0	0	0	0	0	0
CUBA	0	0	0	0	0	0	0	0	0	0	0	0	0	0	0	0	0	0	0	0	0	0
BERMUDA	0	0	0	0	0	0	0	0	0	0	0	0	0	0	0	0	0	0	0	0	0	0
DOMINICAN REPUBLIC	0	0	0	0	0	0	0	0	0	0	0	0	0	0	0	0	0	0	0	0	0	0
FIJI	0	0	0	0	0	0	0	0	0	0	0	0	0	0	0	0	0	0	0	0	0	0
GUAM	34	0	0	0	0	0	4	0	0	0	0	0	0	0	0	0	0	4	4	0	0	0
HAITI	0	0	0	0	0	0	0	0	0	0	0	0	0	0	0	0	0	0	0	0	0	0
JAMAICA	0	0	0	0	0	0	0	0	0	0	0	0	0	0	0	0	0	0	0	0	0	0
NEW ZEALAND	0	0	0	0	0	0	0	0	0	0	0	0	0	0	0	0	0	0	0	0	0	0
PORTUGAL	2	0	0	0	0	0	1	0	0	0	0	0	0	0	0	0	0	1	0	0	0	0
PHILIPPINES	9	0	0	0	0	0	1	0	0	0	0	0	0	0	0	1	1	4	0	0	0	0
PUERTO RICO	8	0	0	0	0	0	0	0	0	0	0	0	0	0	0	1	1	2	0	0	0	0
TAHITI	0	0	0	0	0	0	0	0	0	0	0	0	0	0	0	0	0	0	0	0	0	0
TONGA	0	0	0	0	0	0	0	0	0	0	0	0	0	0	0	0	0	0	0	0	0	0
VIRGIN ISLANDS	3	0	0	0	0	0	0	0	0	0	0	0	0	0	0	0	0	2	0	0	0	0
WEST SAMOA	0	0	0	0	0	0	0	0	0	0	0	0	0	0	0	0	0	0	0	0	0	0
AUSTRALIA	8	0	0	0	0	0	0	0	0	0	0	0	0	0	0	0	0	6	0	0	0	0
ANTARTICA	0	0	0	0	0	0	0	0	0	0	0	0	0	0	0	0	0	0	0	0	0	0
ICELAND	0	0	0	0	0	0	0	0	0	0	0	0	0	0	0	0	0	0	0	0	0	0
GREENLAND	0	0	0	0	0	0	0	0	0	0	0	0	0	0	0	0	0	0	0	0	0	0
MEXICO	220	0	0	1	8	0	19	0	0	4	0	5	0	14	1	0	0	74	0	0	0	0
ALBERTA	14	0	0	0	0	0	0	0	0	0	0	1	0	0	0	1	0	9	0	0	0	0
BRITISH COLUMBIA	64	0	0	2	0	2	1	0	0	0	0	0	0	0	0	0	0	33	1	0	0	0
MANITOBA	0	0	0	0	0	0	0	0	0	0	0	0	0	0	0	0	0	0	0	0	0	0
NEW BRUNSWICK	0	0	0	0	0	0	0	0	0	0	0	0	0	0	0	0	0	0	0	0	0	0
NEWFOUNDLAND	0	0	0	0	0	0	0	0	0	0	0	0	0	0	0	0	0	0	0	0	0	0
NOVA SCOTIA	8	0	0	0	0	0	0	0	0	0	0	0	0	0	0	2	0	5	0	0	0	0
ONTARIO	36	0	0	0	0	0	2	0	0	0	0	0	0	0	0	0	0	24	0	0	0	1
PRINCE EDWARD IS.	0	0	0	0	0	0	0	0	0	0	0	0	0	0	0	0	0	0	0	0	0	0
QUEBEC	0	0	0	0	0	0	0	0	0	0	0	0	0	0	0	0	0	0	0	0	0	0
SASKATCHEWAN	2	0	0	1	0	0	0	0	0	0	0	0	0	0	0	0	0	0	0	0	0	0
NORTHWEST TERRITORY	0	0	0	0	0	0	0	0	0	0	0	0	0	0	0	0	0	0	0	0	0	0
YUKON TERRITORY	0	0	0	0	0	0	0	0	0	0	0	0	0	0	0	0	0	0	0	0	0	0
UNKNOWN	63	0	0	0	0	0	2	0	0	0	0	0	0	0	0	0	0	36	3	0	0	0
<b>** TOTAL **</b>	<b>13285</b>	<b>17</b>	<b>67</b>	<b>285</b>	<b>88</b>	<b>168</b>	<b>1338</b>	<b>9</b>	<b>177</b>	<b>32</b>	<b>21</b>	<b>111</b>	<b>1</b>	<b>121</b>	<b>84</b>	<b>183</b>	<b>89</b>	<b>4705</b>	<b>533</b>	<b>36</b>	<b>51</b>	

December 2006 Totals by Location Moved From, and By County Moved To

FROM / TO	LEWIS	LINCOLN	MASON	OKANAGON	PACIFIC	PEND OREILLE	PIERCE	SAN JUAN	SKAGIT	SKAMANIA	SNOHOMISH	SPOKANE	STEVENS	THURSTON	WAHIAKUM	WALLA	WHATCOM	WHITMAN	YAKIMA	UNKNOWN
ALABAMA	0	0	0	0	0	0	11	0	0	0	4	5	0	6	0	1	2	1	0	0
ALASKA	5	1	1	2	4	3	34	1	7	0	16	27	7	6	1	5	15	4	4	0
ARIZONA	4	1	1	2	3	2	48	2	8	1	50	39	3	14	1	0	18	4	9	0
ARKANSAS	1	0	0	0	0	0	5	0	1	0	3	3	0	4	0	0	2	0	4	0
CALIFORNIA	26	3	23	7	14	5	231	10	41	4	288	166	21	73	6	18	83	19	66	3
COLORADO	5	1	3	0	1	1	24	1	11	1	41	20	2	12	0	3	15	2	3	0
CONNECTICUT	0	0	0	1	0	0	10	0	0	0	2	3	1	1	0	0	1	0	0	0
DELAWARE	0	0	0	0	0	0	13	0	0	0	1	1	0	0	0	0	1	0	0	1
FLORIDA	2	1	4	3	0	0	58	0	10	1	60	50	2	27	0	4	12	0	13	0
GEORGIA	0	0	1	0	0	0	35	0	1	0	14	14	1	6	0	3	4	0	6	0
HAWAII	1	0	0	0	0	2	27	2	1	0	20	13	0	14	1	1	9	1	3	1
IDAHO	10	5	2	1	1	8	20	0	4	0	14	144	6	14	0	9	6	14	15	0
ILLINOIS	0	0	0	0	1	0	37	0	1	0	29	11	0	9	0	2	8	0	1	1
INDIANA	1	0	0	0	0	0	10	0	0	0	13	4	0	6	0	0	5	2	4	0
IOWA	0	0	0	0	0	0	8	0	0	0	1	2	1	2	0	0	7	1	1	0
KANSAS	0	0	2	0	1	0	9	0	0	0	12	3	2	5	0	0	3	0	5	0
KENTUCKY	1	0	0	0	0	0	15	1	0	0	4	7	0	5	0	1	4	2	2	0
LOUISIANA	2	0	0	0	0	0	16	0	2	0	8	6	0	3	0	0	0	0	0	0
MAINE	0	0	0	0	0	0	2	0	0	0	4	1	1	0	0	0	2	0	1	0
MARYLAND	0	0	0	0	1	0	11	0	1	2	12	5	0	5	0	0	1	0	2	0
MASSACHUSETTS	0	0	1	0	0	0	16	0	1	0	9	7	0	0	0	0	4	0	0	0
MICHIGAN	2	1	2	0	0	0	28	0	1	0	27	22	1	6	0	0	16	1	8	0
MINNESOTA	0	0	2	1	0	0	11	0	0	0	17	10	4	4	0	0	11	2	0	0
MISSISSIPPI	0	0	0	0	0	0	2	0	1	0	2	1	0	2	0	0	4	1	0	0
MISSOURI	3	1	0	2	0	0	20	1	2	2	16	9	0	5	0	0	2	0	0	0
MONTANA	3	0	1	3	0	2	16	0	4	0	19	49	2	9	2	0	10	3	5	0
NEBRASKA	0	0	1	0	1	0	2	0	0	0	5	8	0	1	0	1	0	0	2	0
NEVADA	3	2	6	3	2	1	25	2	6	0	25	31	8	6	0	1	12	2	5	0
NEW HAMPSHIRE	0	0	1	0	0	0	3	0	0	0	3	1	0	7	0	0	0	0	0	0
NEW JERSEY	1	0	0	3	0	0	20	0	0	0	9	4	0	5	0	1	4	0	0	0
NEW MEXICO	2	0	0	0	0	0	5	0	0	0	10	6	0	7	0	0	8	0	5	0
NEW YORK	0	0	2	0	0	0	43	0	2	0	18	17	0	10	0	0	5	1	4	0
NORTH CAROLINA	1	0	1	0	0	0	25	0	4	0	24	8	1	15	0	0	7	0	8	0
NORTH DAKOTA	1	0	0	0	0	0	2	0	2	0	2	3	0	0	0	0	2	0	0	0
OHIO	0	0	3	0	3	0	31	0	1	0	21	9	0	8	0	0	5	3	4	0
OKLAHOMA	0	0	1	0	0	0	16	0	6	1	12	5	0	6	0	0	4	0	1	0
OREGON	23	2	13	5	13	0	80	4	7	17	67	70	7	47	2	40	30	4	38	2
PENNSYLVANIA	0	0	1	0	0	1	23	1	1	0	11	4	0	4	0	0	2	0	2	1
RHODE ISLAND	0	0	0	0	0	0	2	0	2	0	1	1	0	0	0	0	0	0	0	0
SOUTH CAROLINA	0	0	1	0	0	0	7	0	0	0	3	2	1	7	0	0	1	0	3	0
SOUTH DAKOTA	12	0	0	0	0	1	6	0	1	0	2	1	0	2	0	0	2	0	1	0
TENNESSEE	4	0	0	0	1	0	18	0	3	0	21	15	0	5	0	2	5	2	6	0
TEXAS	1	1	5	3	0	0	73	1	12	0	47	28	1	34	0	4	13	3	12	0
UTAH	1	0	1	1	0	0	17	0	7	0	22	23	3	2	0	1	11	3	7	0
VERMONT	0	0	0	0	0	0	3	0	0	0	2	2	0	2	0	0	1	0	0	0
VIRGINIA	0	0	0	1	1	0	26	0	0	0	21	14	0	6	0	0	6	1	1	0
WASHINGTON	0	0	0	0	0	0	0	0	0	0	0	0	0	0	0	0	0	0	0	0
WEST VIRGINIA	0	0	0	0	1	0	3	0	0	0	1	1	1	2	0	0	2	0	0	0
WISCONSIN	1	0	1	0	0	0	12	0	2	0	9	1	0	2	0	0	6	1	1	0
WYOMING	0	0	1	1	0	0	3	0	1	0	6	8	1	0	0	0	2	0	1	0
WASHINGTON D.C.	0	0	0	0	0	0	2	0	0	0	2	3	0	0	0	0	0	0	0	0
ARGENTINA	0	0	0	0	0	0	0	0	0	0	0	0	0	0	0	0	0	0	0	0
BELIZE (BRIT HONDU)	0	0	0	0	0	0	0	0	0	0	0	0	0	0	0	0	0	0	0	0
BOLIVIA	0	0	0	0	0	0	0	0	0	0	0	0	0	0	0	0	0	0	0	0

December 2006 Totals by Location Moved From, and By County Moved To

FROM / TO	LEWIS	LINCOLN	MASON	OKANAGON	PACIFIC	PEND OREILLE	PIERCE	SAN JUAN	SKAGIT	SKAMANIA	SNOHOMISH	SPOKANE	STEVENS	THURSTON	WAHKIAKUM	WALLA WALLA	WHATCOM	WHITMAN	YAKIMA	UNKNOWN
BRAZIL	0	0	0	0	0	0	3	0	0	0	4	0	0	0	0	0	0	0	0	0
CHILE	0	0	0	0	0	0	0	0	0	0	0	0	0	0	0	0	0	0	0	0
CANAL ZONE	0	0	0	0	0	0	0	0	0	0	0	0	0	0	0	0	0	0	0	0
COLUMBIA	0	0	0	0	0	0	0	0	0	0	0	0	0	0	0	0	0	0	0	0
COSTA RICA	0	0	0	0	0	0	0	0	0	0	0	0	0	0	0	0	0	0	0	0
EL SALVADOR	0	0	1	0	0	0	0	0	0	0	0	0	0	0	0	0	0	0	2	0
EQUADOR	0	0	0	0	0	0	1	0	0	0	1	0	0	0	0	1	0	0	0	0
GUYANA	0	0	0	0	0	0	0	0	0	0	0	0	0	0	0	0	0	0	0	0
NICARAGUA	0	0	0	0	0	0	0	0	0	0	1	0	0	0	0	0	0	0	0	0
PANAMA	0	0	0	0	0	0	1	0	0	0	0	1	0	0	0	0	0	0	0	0
PERU	0	0	0	0	0	0	0	0	0	0	0	0	0	0	0	0	0	0	0	0
PARAGUAY	0	0	0	0	0	0	0	0	0	0	0	0	0	0	0	0	0	0	0	0
SURINAM	0	0	0	0	0	0	0	0	0	0	0	0	0	0	0	0	0	0	0	0
TRINIDAD	0	0	0	0	0	0	0	0	0	0	0	0	0	0	0	0	0	0	0	0
UPPER VOLTA	0	0	0	0	0	0	0	0	0	0	0	0	0	0	0	0	0	0	0	0
URUGUAY	0	0	0	0	0	0	0	0	0	0	0	0	0	0	0	0	0	0	0	0
VENEZUELA	0	0	0	0	0	0	0	0	0	0	0	0	0	0	0	0	0	0	0	0
ALGERIA	0	0	0	0	0	0	0	0	0	0	0	0	0	0	0	0	0	0	0	0
ANGOLA	0	0	0	0	0	0	0	0	0	0	0	0	0	0	0	0	0	0	0	0
CAMERON	0	0	0	0	0	0	0	0	0	0	0	0	0	0	0	0	0	0	0	0
CHAD	0	0	0	0	0	0	0	0	0	0	0	0	0	0	0	0	0	0	0	0
CONGO	0	0	0	0	0	0	0	0	0	0	0	0	0	0	0	0	0	0	0	0
C. AFRICAN REP.	0	0	0	0	0	0	0	0	0	0	0	0	0	0	0	0	0	0	0	0
BOTSWANA	0	0	0	0	0	0	0	0	0	0	0	0	0	0	0	0	0	0	0	0
BURUNDI	0	0	0	0	0	0	0	0	0	0	0	0	0	0	0	0	0	0	0	0
DAHOMEY	0	0	0	0	0	0	0	0	0	0	0	0	0	0	0	0	0	0	0	0
EQ. GUINEA	0	0	0	0	0	0	0	0	0	0	0	0	0	0	0	0	0	0	0	0
EGYPT	0	0	0	0	0	0	0	0	0	0	0	0	0	0	0	0	0	0	0	0
ETHIOPIA	0	0	0	0	0	0	0	0	0	0	0	0	0	0	0	0	0	0	0	0
GABON	0	0	0	0	0	0	0	0	0	0	0	0	0	0	0	0	0	0	0	0
GAMBIA	0	0	0	0	0	0	0	0	0	0	0	0	0	0	0	0	0	0	0	0
GHANA	0	0	0	0	0	0	0	0	0	0	0	0	0	0	0	0	0	0	0	0
GUINEA	0	0	0	0	0	0	0	0	0	0	0	0	0	0	0	0	0	0	0	0
IVORY COAST	0	0	0	0	0	0	0	0	0	0	0	0	0	0	0	0	0	0	0	0
KENYA	0	0	0	0	0	0	0	0	0	0	0	0	0	0	0	0	0	2	0	0
LIBYA	0	0	0	0	0	0	0	0	0	0	0	0	0	0	0	0	0	0	0	0
LIBERIA	0	0	0	0	0	0	0	0	0	0	0	0	0	0	0	0	0	0	0	0
MALAWI	0	0	0	0	0	0	0	0	0	0	0	0	0	0	0	0	0	0	0	0
MALAGASY	0	0	0	0	0	0	0	0	0	0	0	0	0	0	0	0	0	0	0	0
MORROCCO	0	0	0	0	0	0	0	0	0	0	0	0	0	0	0	0	0	0	0	0
MAURITANIA	0	0	0	0	0	0	0	0	0	0	0	0	0	0	0	0	0	0	0	0
MALI	0	0	0	0	0	0	0	0	0	0	0	0	0	0	0	0	0	0	0	0
NIGER	0	0	0	0	0	0	0	0	0	0	0	0	0	0	0	0	0	0	0	0
NIGERIA	0	0	0	0	0	0	0	0	0	0	0	0	0	0	0	0	0	1	0	0
RHODESIA	0	0	0	0	0	0	0	0	0	0	0	0	0	0	0	0	0	0	0	0
RWANDA	0	0	0	0	0	0	0	0	0	0	0	0	0	0	0	0	0	0	0	0
SOUTH AFRICA	0	0	0	0	0	0	0	0	0	0	0	0	0	0	0	0	0	0	0	0
SOUTH WEST AFRICA	0	0	0	0	0	0	0	0	0	0	0	0	0	0	0	0	0	0	0	0
SIERRA LEONE	0	0	0	0	0	0	0	0	0	0	0	0	0	0	0	0	0	0	0	0
SWAZILAND	0	0	0	0	0	0	0	0	0	0	0	0	0	0	0	0	0	0	0	0
SENEGAL	0	0	0	0	0	0	0	0	0	0	0	0	0	0	0	0	0	0	0	0
SOMALI REPUBLIC	0	0	0	0	0	0	0	0	0	0	0	0	0	0	0	0	0	0	0	0
SUDAN	0	0	0	0	0	0	0	0	0	0	0	0	0	0	0	0	0	0	0	0
TOGO	0	0	0	0	0	0	0	0	0	0	0	0	0	0	0	0	0	0	0	0
TUNISIA	0	0	0	0	0	0	0	0	0	0	0	0	0	0	0	0	0	0	0	0
TANZANIA	0	0	0	0	0	0	0	0	0	0	0	0	0	0	0	0	0	0	0	0

December 2006 Totals by Location Moved From, and By County Moved To

FROM / TO	LEWIS	LINCOLN	MASON	OKANAGON	PACIFIC	PEND OREILLE	PIERCE	SAN JUAN	SKAGIT	SKAMANIA	SNOHOMISH	SPOKANE	STEVENS	THURSTON	WAHKIAKUM	WALLA WALLA	WHATCOM	WHITMAN	YAKIMA	UNKNOWN
UGANDA	0	0	0	0	0	0	0	0	0	0	0	0	0	0	0	0	0	0	0	0
ZAIRE	0	0	0	0	0	0	0	0	0	0	0	0	0	0	0	0	0	0	0	0
AFGHANISTAN	0	0	0	0	0	0	0	0	0	0	0	0	0	0	0	0	0	0	0	0
BANGLADESH	0	0	0	0	0	0	0	0	0	0	0	0	0	0	0	0	0	0	0	0
BHUTAN	0	0	0	0	0	0	0	0	0	0	0	0	0	0	0	0	0	0	0	0
BURMA	0	0	0	0	0	0	0	0	0	0	0	0	0	0	0	0	0	0	0	0
BAHRAIN	0	0	0	0	0	0	0	0	0	0	0	0	0	0	0	0	0	0	0	0
CEYLON (SRI LANKA)	0	0	0	0	0	0	0	0	0	0	0	0	0	0	0	0	0	0	0	0
CHINA	0	0	0	0	0	0	0	0	0	0	0	0	0	0	0	0	0	2	0	0
CAMBODIA	0	0	0	0	0	0	0	0	0	0	0	0	0	0	0	0	0	0	0	0
CYPRUS	0	0	0	0	0	0	0	0	0	0	0	0	0	0	0	0	0	0	0	0
JORDAN	0	0	0	0	0	0	0	0	0	0	0	0	0	0	0	0	0	0	0	0
JAPAN	0	0	0	0	0	0	0	0	0	0	0	0	0	0	0	0	0	2	0	0
KUWAIT	0	0	0	0	0	0	0	0	0	0	0	0	0	0	0	0	0	0	0	0
IRAN	0	0	0	0	0	0	0	0	0	0	0	0	0	0	0	0	0	0	0	0
ISRAEL	0	0	0	0	0	0	0	0	0	0	0	0	0	0	0	0	0	0	0	0
INDIA	0	0	0	0	0	0	0	0	0	0	0	1	0	0	0	0	0	1	0	0
IRAQ	0	0	0	0	0	0	0	0	0	0	0	0	0	0	0	0	0	0	0	0
INDONESIA	0	0	0	0	0	0	0	0	0	0	1	0	0	0	0	0	0	0	0	0
KOREA	0	0	0	0	0	0	3	0	0	0	0	0	0	1	0	0	0	0	0	0
LAOS	0	0	0	0	0	0	0	0	0	0	0	0	0	0	0	0	0	0	0	0
LEBANON	0	0	0	0	0	0	0	0	0	0	0	0	0	0	0	0	0	0	0	0
MALAYSIA	0	0	0	0	0	0	0	0	0	0	0	0	0	0	0	0	0	0	0	0
MONGOLIA	0	0	0	0	0	0	0	0	0	0	0	0	0	0	0	0	0	0	0	0
NEPAL	0	0	0	0	0	0	0	0	0	0	0	0	0	0	0	0	0	0	0	0
OMAN	0	0	0	0	0	0	0	0	0	0	0	0	0	0	0	0	0	0	0	0
PAKISTAN	0	0	0	0	0	0	0	0	0	0	0	0	0	0	0	0	0	0	0	0
QATAR	0	0	0	0	0	0	0	0	0	0	0	0	0	0	0	0	0	0	0	0
SIKKIM	0	0	0	0	0	0	0	0	0	0	0	0	0	0	0	0	0	0	0	0
SYRIA	0	0	0	0	0	0	0	0	0	0	0	0	0	0	0	0	0	0	0	0
SAUDI ARABIA	0	0	0	0	0	0	0	0	0	0	0	0	0	0	0	0	0	0	0	0
SINGAPORE	0	0	1	0	0	0	0	0	0	0	0	0	0	0	0	0	0	0	0	0
TAIWAN	0	0	0	0	0	0	0	0	0	0	0	0	0	0	0	0	0	1	0	0
THAILAND	0	0	0	0	0	0	0	0	0	0	0	0	0	0	0	0	0	0	0	0
TURKEY	0	0	0	0	0	0	0	0	0	0	0	0	0	0	0	0	0	0	0	0
USSR	0	0	0	0	0	0	0	0	0	0	4	0	0	0	0	0	0	0	0	0
UNITED ARAB EMIRATE	0	0	0	0	0	0	0	0	0	0	0	0	0	0	0	0	0	0	0	0
VIETNAM	0	0	0	0	0	0	2	0	0	0	0	0	0	0	0	0	0	0	0	0
YEMEN	0	0	0	0	0	0	0	0	0	0	0	0	0	0	0	0	0	0	0	0
AUSTRIA	0	0	0	0	0	0	0	0	0	0	0	0	0	0	0	0	0	0	0	0
BULGARIA	0	0	0	0	0	0	0	0	0	0	0	0	0	0	0	0	0	0	0	0
BELGIUM	0	0	0	0	0	0	0	0	0	0	0	0	0	0	0	0	0	0	0	0
DENMARK	0	0	0	0	0	0	0	0	0	0	0	0	0	0	0	0	0	0	0	0
ENGLAND	0	0	1	0	0	0	0	0	0	0	0	0	0	0	0	0	0	0	0	0
FRANCE	0	0	0	0	0	0	0	0	0	0	0	0	0	0	0	0	0	0	0	0
FINLAND	0	0	0	0	0	0	0	0	0	0	0	0	0	0	0	0	0	0	0	0
CZECHOSLAVAKIA	0	0	0	0	0	0	0	0	0	0	0	0	0	0	0	0	0	0	0	0
GREECE	0	0	0	0	0	0	0	0	0	0	0	0	0	0	0	0	0	0	0	0
GERMANY	0	0	0	0	0	0	1	0	0	0	1	0	0	0	0	0	0	0	0	0
IRELAND	0	0	0	0	0	0	0	0	0	0	0	0	0	0	0	0	0	0	0	0
ITALY	0	0	0	0	0	0	0	0	0	0	0	0	0	0	0	0	0	0	0	0
HUNGARY	0	0	0	0	0	0	0	0	0	0	0	0	0	0	0	0	0	0	0	0
LUXEMBOURG	0	0	0	0	0	0	0	0	0	0	0	0	0	0	0	0	0	0	0	0
NETHERLANDS	0	0	0	0	0	0	0	0	0	0	0	0	0	0	0	0	0	0	0	0
NORWAY	0	0	0	0	0	0	0	0	0	0	0	0	0	0	0	0	0	0	0	0
POLAND	0	0	0	0	0	0	0	0	0	0	0	0	0	0	0	0	0	0	0	0

**December 2006 Totals by Location Moved From, and By County Moved To**

FROM / TO	LEWIS	LINCOLN	MASON	OKANAGON	PACIFIC	PEND OREILLE	PIERCE	SAN JUAN	SKAGIT	SKAMANIA	SNOHOMISH	SPOKANE	STEVENS	THURSTON	WAHKIAKUM	WALLA WALLA	WHATCOM	WHITMAN	YAKIMA	UNKNOWN
SPAIN	0	0	0	0	0	0	0	0	0	0	1	0	0	0	0	0	0	0	0	0
SWITZERLAND	0	0	0	0	0	0	0	0	0	0	0	0	0	0	0	0	0	0	0	0
SWEDEN	0	0	0	0	0	0	0	0	0	0	0	0	0	0	0	0	0	0	0	0
ROMANIA	0	0	0	0	0	0	1	0	0	0	1	0	0	0	0	0	0	0	0	0
YUGOSLAVIA	0	0	0	0	0	0	0	0	0	0	0	0	0	0	0	0	0	0	0	0
ALBANIA	0	0	0	0	0	0	0	0	0	0	0	0	0	0	0	0	0	0	0	0
ANDORRA	0	0	0	0	0	0	0	0	0	0	0	0	0	0	0	0	0	0	0	0
AMERICAN SAMOA	0	0	0	0	0	0	5	0	0	0	0	0	0	0	0	0	0	0	0	0
BORNEO	0	0	0	0	0	0	0	0	0	0	0	0	0	0	0	0	0	0	0	0
CUBA	0	0	0	0	0	0	0	0	0	0	0	0	0	0	0	0	0	0	0	0
BERMUDA	0	0	0	0	0	0	0	0	0	0	0	0	0	0	0	0	0	0	0	0
DOMINICAN REPUBLIC	0	0	0	0	0	0	0	0	0	0	0	0	0	0	0	0	0	0	0	0
FIJI	0	0	0	0	0	0	0	0	0	0	0	0	0	0	0	0	0	0	0	0
GUAM	0	0	0	2	0	0	10	0	0	0	3	4	0	3	0	0	0	0	0	0
HAITI	0	0	0	0	0	0	0	0	0	0	0	0	0	0	0	0	0	0	0	0
JAMAICA	0	0	0	0	0	0	0	0	0	0	0	0	0	0	0	0	0	0	0	0
NEW ZEALAND	0	0	0	0	0	0	0	0	0	0	0	0	0	0	0	0	0	0	0	0
PORTUGAL	0	0	0	0	0	0	0	0	0	0	0	0	0	0	0	0	0	0	0	0
PHILIPPINES	0	0	0	0	0	0	2	0	0	0	0	0	0	0	0	0	0	0	0	0
PUERTO RICO	0	0	0	0	0	0	4	0	0	0	0	0	0	0	0	0	0	0	0	0
TAHITI	0	0	0	0	0	0	0	0	0	0	0	0	0	0	0	0	0	0	0	0
TONGA	0	0	0	0	0	0	0	0	0	0	0	0	0	0	0	0	0	0	0	0
VIRGIN ISLANDS	0	0	0	0	0	0	1	0	0	0	0	0	0	0	0	0	0	0	0	0
WEST SAMOA	0	0	0	0	0	0	0	0	0	0	0	0	0	0	0	0	0	0	0	0
AUSTRALIA	0	0	0	0	0	0	1	0	0	0	0	0	0	0	0	0	0	1	0	0
ANTARTICA	0	0	0	0	0	0	0	0	0	0	0	0	0	0	0	0	0	0	0	0
ICELAND	0	0	0	0	0	0	0	0	0	0	0	0	0	0	0	0	0	0	0	0
GREENLAND	0	0	0	0	0	0	0	0	0	0	0	0	0	0	0	0	0	0	0	0
MEXICO	7	0	7	0	6	0	14	0	0	0	21	0	0	4	0	2	0	0	33	0
ALBERTA	0	0	0	0	0	0	1	0	0	0	1	0	0	0	0	1	0	0	0	0
BRITISH COLUMBIA	0	0	1	0	0	0	6	0	1	0	6	3	0	0	0	0	7	1	0	0
MANITOBA	0	0	0	0	0	0	0	0	0	0	0	0	0	0	0	0	0	0	0	0
NEW BRUNSWICK	0	0	0	0	0	0	0	0	0	0	0	0	0	0	0	0	0	0	0	0
NEWFOUNDLAND	0	0	0	0	0	0	0	0	0	0	0	0	0	0	0	0	0	0	0	0
NOVA SCOTIA	0	0	0	0	0	0	0	0	0	0	1	0	0	0	0	0	0	0	0	0
ONTARIO	0	0	0	0	0	0	0	0	0	0	6	0	0	2	0	0	1	0	0	0
PRINCE EDWARD IS.	0	0	0	0	0	0	0	0	0	0	0	0	0	0	0	0	0	0	0	0
QUEBEC	0	0	0	0	0	0	0	0	0	0	0	0	0	0	0	0	0	0	0	0
SASKATCHEWAN	0	0	0	0	0	0	0	0	0	0	0	0	0	0	0	1	0	0	0	0
NORTHWEST TERRITORY	0	0	0	0	0	0	0	0	0	0	0	0	0	0	0	0	0	0	0	0
YUKON TERRITORY	0	0	0	0	0	0	0	0	0	0	0	0	0	0	0	0	0	0	0	0
UNKNOWN	6	0	0	0	0	0	8	0	0	0	1	2	1	1	0	0	0	0	1	2
<b>** TOTAL **</b>	<b>129</b>	<b>19</b>	<b>92</b>	<b>41</b>	<b>54</b>	<b>26</b>	<b>1228</b>	<b>26</b>	<b>155</b>	<b>29</b>	<b>1083</b>	<b>898</b>	<b>78</b>	<b>427</b>	<b>13</b>	<b>102</b>	<b>381</b>	<b>88</b>	<b>289</b>	<b>11</b>