



STATE OF WASHINGTON
DEPARTMENT OF LICENSING
PO Box 9035 • Olympia, Washington 98507-9035

August 13, 2009

Washington State Drivers Report for July 2009

The monthly report for July 2009 tabulates Washington drivers' license (WDL) activity. The table below summarizes WDL migration in and out of Washington State. It also identifies the top three in-migration states. This data generates a net increase series. The reported month of surrendered WDLs is a reflection of the month Washington received the information and not when the driver left Washington. Therefore, the net increase is an estimate of net migration. Beginning with the April 1998 data, this report and supporting documentation are available via e-mail at the address below. Our formats are PDF for the report and Excel for the data files.

During the month of July (June 27, 2009 to July 26, 2009), a total of 10,280 out-of-state drivers obtained a Washington driver license. This is 1,422 fewer than the 11,702 who obtained licenses in July of 2008 (June 28, 2008 to July 26, 2008). Net migration to Washington for July 2009 was 5,949 drivers, compared to 4,498 the same month last year. For the 12 months ending July 2009, 135,317 out-of-state drivers obtained a Washington driver license, a decrease over the same period a year ago by 2.7 percent.

The table below displays data using a 12-month moving sum to help smooth out the monthly variance and reveal the trend. The graphs on the attached file display the results of this smoothing. The first graph plots new drivers moving into Washington as well as the net increase.

| | Jul 2009 | | | Year Ending Jul 2009 | | |
|-------------------------|---------------|---------------|--------------|----------------------|----------------|-------------|
| | 2008 | 2009 | % Change | 2008 | 2009 | % Change |
| Total Drivers In | 11,702 | 10,280 | -12.2 | 139,120 | 135,317 | -2.7 |
| California | 2,289 | 2,008 | -12.3 | 27,287 | 26,187 | -4.0 |
| Oregon | 1,512 | 1,398 | -7.5 | 17,589 | 19,522 | 11.0 |
| Texas | 519 | 491 | -5.4 | 6,593 | 6,199 | -6.0 |
| Returned WDL* | 7,204 | 4,331 | -39.9 | 67,357 | 59,794 | -11.2 |
| Net Increase | 4,498 | 5,949 | 32.3 | 71,763 | 75,523 | 5.2 |

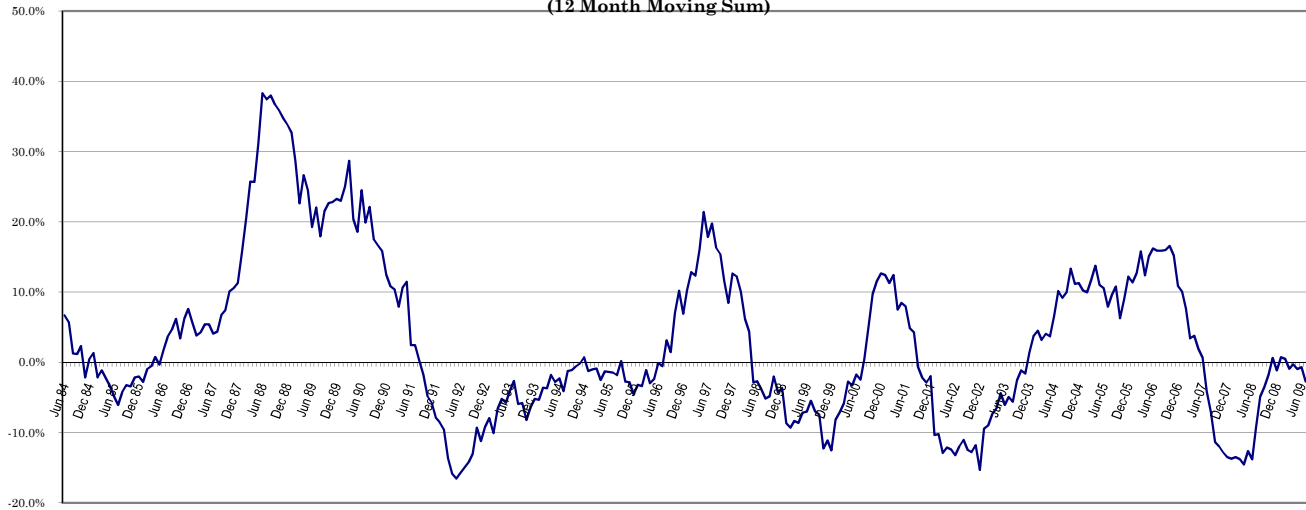
* Reliability of the surrendered license data is limited due to incomplete reporting (e.g. California only reports commercial driver licenses surrendered) as well as delays in the notification process by other jurisdictions.

Alice Vogel, Economic Analyst
Department of Licensing
Office of Budget and Economic Analysis
Highways and Licensing Building
Olympia, WA 98501-48018
(360) 902-3986
FAX: (360) 753-7500
E-Mail: avogel@dol.wa.gov

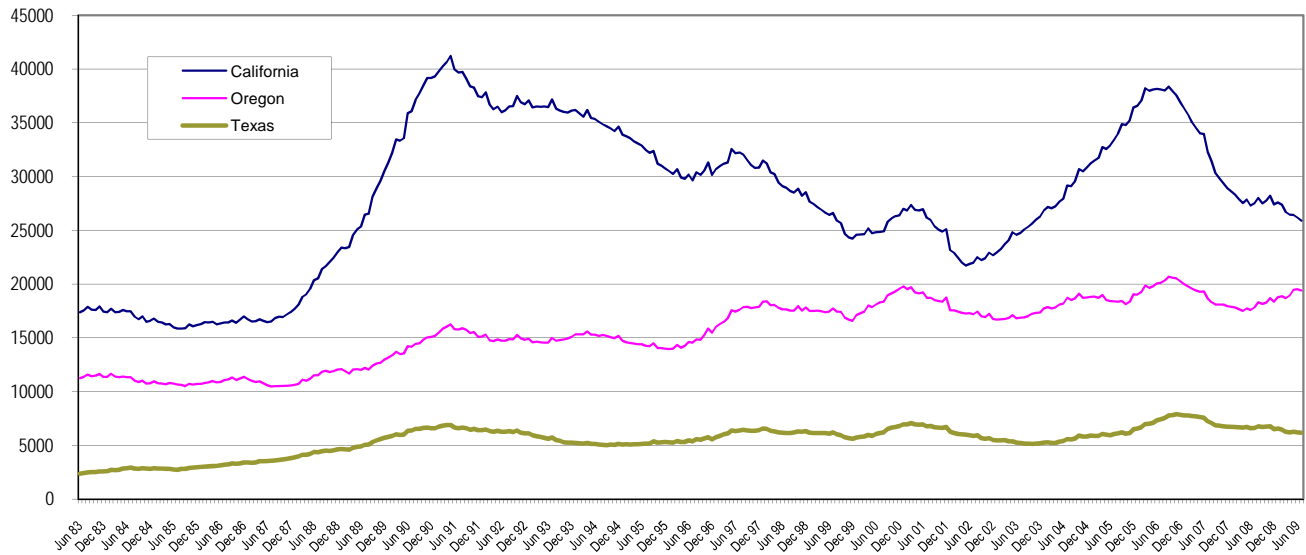
**Washington State Driver's Licenses
(12 Month Moving Sum)**



**% Change Year Ago
(12 Month Moving Sum)**



**Largest States
(12 Months Moving Sum)**



Net Increase States

Month: **July 2009**

| State | IN | OUT | Net in Migration |
|----------------|---------------|--------------|------------------|
| ALABAMA | 58 | 186 | (128) |
| ALASKA | 204 | 0 | 204 |
| ARIZONA | 395 | 0 | 395 |
| ARKANSAS | 56 | 50 | 6 |
| CALIFORNIA | 2008 | 0 | 2,008 |
| COLORADO | 249 | 283 | (34) |
| CONNECTICUT | 44 | 61 | (17) |
| DELAWARE | 8 | 1 | 7 |
| FLORIDA | 384 | 219 | 165 |
| GEORGIA | 167 | 115 | 52 |
| HAWAII | 163 | 84 | 79 |
| IDAHO | 417 | 436 | (19) |
| ILLINOIS | 190 | 114 | 76 |
| INDIANA | 86 | 98 | (12) |
| IOWA | 65 | 0 | 65 |
| KANSAS | 103 | 106 | (3) |
| KENTUCKY | 55 | 0 | 55 |
| LOUISIANA | 53 | 56 | (3) |
| MAINE | 27 | 7 | 20 |
| MARYLAND | 75 | 78 | (3) |
| MASSACHUSETTS | 92 | 0 | 92 |
| MICHIGAN | 287 | 125 | 162 |
| MINNESOTA | 135 | 89 | 46 |
| MISSISSIPPI | 27 | 16 | 11 |
| MISSOURI | 133 | 57 | 76 |
| MONTANA | 175 | 236 | (61) |
| NEBRASKA | 55 | 19 | 36 |
| NEVADA | 252 | 44 | 208 |
| NEW HAMPSHIRE | 33 | 20 | 13 |
| NEW JERSEY | 98 | 50 | 48 |
| NEW MEXICO | 78 | 0 | 78 |
| NEW YORK | 228 | 248 | (20) |
| NORTH CAROLINA | 255 | 0 | 255 |
| NORTH DAKOTA | 33 | 17 | 16 |
| OHIO | 150 | 92 | 58 |
| OKLAHOMA | 58 | 0 | 58 |
| OREGON | 1398 | 822 | 576 |
| PENNSYLVANIA | 138 | 4 | 134 |
| RHODE ISLAND | 13 | 0 | 13 |
| SOUTH CAROLINA | 48 | 10 | 38 |
| SOUTH DAKOTA | 34 | 88 | (54) |
| TENNESSEE | 125 | 10 | 115 |
| TEXAS | 491 | 11 | 480 |
| UTAH | 178 | 206 | (28) |
| VERMONT | 23 | 4 | 19 |
| VIRGINIA | 213 | 125 | 88 |
| WASHINGTON | 7 | 0 | 7 |
| WEST VIRGINIA | 21 | 21 | 0 |
| WISCONSIN | 144 | 66 | 78 |
| WYOMING | 56 | 44 | 12 |
| WASH. DC | 14 | 0 | 14 |
| OUTSIDE U.S. | 481 | 13 | 468 |
| TOTAL | 10,280 | 4,331 | 5,949 |

July 2009 Totals by Location Moved From, and By County Moved To

| FROM/TO | TOTAL | GRAYS | | | | | | | | | | | | | | | | | | | |
|---------------------|-------|-------|--------|--------|--------|---------|-------|----------|---------|---------|-------|----------|----------|-------|--------|--------|-----------|------|--------|----------|----------|
| | | ADAMS | ASOTIN | BENTON | CHELAN | CLALLAM | CLARK | COLUMBIA | COWLITZ | DOUGLAS | FERRY | FRANKLIN | GARFIELD | GRANT | HARBOR | ISLAND | JEFFERSON | KING | KITSAP | KITTITAS | KLCKITAT |
| ALABAMA | 58 | 0 | 0 | 1 | 0 | 1 | 8 | 0 | 3 | 0 | 0 | 0 | 0 | 0 | 0 | 4 | 0 | 18 | 3 | 0 | 0 |
| ALASKA | 204 | 0 | 4 | 5 | 1 | 7 | 7 | 0 | 2 | 1 | 2 | 0 | 0 | 3 | 8 | 3 | 1 | 43 | 11 | 1 | 0 |
| ARIZONA | 395 | 2 | 1 | 10 | 4 | 7 | 28 | 0 | 1 | 1 | 0 | 3 | 0 | 3 | 9 | 9 | 7 | 132 | 19 | 1 | 2 |
| ARKANSAS | 56 | 0 | 0 | 2 | 1 | 3 | 3 | 0 | 1 | 0 | 0 | 0 | 0 | 0 | 2 | 0 | 0 | 17 | 0 | 0 | 0 |
| CALIFORNIA | 2008 | 1 | 1 | 44 | 18 | 42 | 121 | 0 | 21 | 4 | 4 | 18 | 0 | 24 | 13 | 40 | 10 | 685 | 126 | 11 | 6 |
| COLORADO | 249 | 0 | 0 | 5 | 2 | 9 | 11 | 0 | 3 | 0 | 0 | 1 | 0 | 2 | 0 | 5 | 2 | 97 | 10 | 0 | 0 |
| CONNECTICUT | 44 | 0 | 0 | 4 | 0 | 0 | 0 | 0 | 0 | 0 | 0 | 0 | 0 | 0 | 0 | 0 | 0 | 18 | 9 | 2 | 0 |
| DELAWARE | 8 | 0 | 0 | 0 | 0 | 0 | 2 | 0 | 0 | 0 | 0 | 0 | 0 | 0 | 0 | 0 | 0 | 4 | 0 | 0 | 0 |
| FLORIDA | 384 | 0 | 1 | 5 | 5 | 6 | 26 | 0 | 6 | 1 | 1 | 3 | 0 | 1 | 2 | 11 | 3 | 153 | 25 | 0 | 1 |
| GEORGIA | 167 | 0 | 0 | 7 | 2 | 0 | 7 | 0 | 1 | 0 | 0 | 1 | 0 | 3 | 1 | 2 | 0 | 73 | 9 | 0 | 0 |
| HAWAII | 163 | 0 | 0 | 1 | 3 | 2 | 10 | 0 | 1 | 2 | 0 | 0 | 0 | 1 | 0 | 1 | 0 | 62 | 12 | 4 | 0 |
| IDAHO | 417 | 2 | 36 | 25 | 2 | 1 | 19 | 0 | 4 | 1 | 2 | 4 | 0 | 6 | 1 | 6 | 2 | 70 | 20 | 0 | 5 |
| ILLINOIS | 190 | 0 | 1 | 4 | 1 | 2 | 5 | 0 | 0 | 2 | 0 | 0 | 0 | 0 | 1 | 2 | 0 | 84 | 8 | 0 | 0 |
| INDIANA | 86 | 0 | 0 | 2 | 0 | 0 | 3 | 0 | 2 | 0 | 0 | 0 | 0 | 0 | 0 | 2 | 1 | 34 | 3 | 1 | 0 |
| IOWA | 65 | 0 | 0 | 0 | 1 | 1 | 2 | 0 | 2 | 0 | 0 | 0 | 0 | 0 | 2 | 0 | 0 | 25 | 5 | 0 | 1 |
| KANSAS | 103 | 1 | 0 | 3 | 1 | 0 | 12 | 0 | 0 | 0 | 0 | 2 | 0 | 0 | 1 | 1 | 0 | 34 | 10 | 1 | 0 |
| KENTUCKY | 55 | 0 | 1 | 0 | 0 | 6 | 2 | 0 | 0 | 0 | 0 | 0 | 0 | 0 | 0 | 3 | 0 | 12 | 1 | 2 | 0 |
| LOUISIANA | 53 | 0 | 0 | 1 | 1 | 0 | 5 | 0 | 1 | 0 | 0 | 2 | 0 | 1 | 0 | 1 | 0 | 12 | 6 | 0 | 0 |
| MAINE | 27 | 0 | 0 | 0 | 0 | 1 | 1 | 0 | 0 | 0 | 0 | 0 | 0 | 1 | 0 | 2 | 0 | 6 | 2 | 0 | 0 |
| MARYLAND | 75 | 0 | 0 | 1 | 0 | 2 | 2 | 0 | 1 | 0 | 0 | 0 | 0 | 1 | 1 | 1 | 0 | 35 | 4 | 1 | 0 |
| MASSACHUSETTS | 92 | 0 | 0 | 2 | 0 | 1 | 1 | 0 | 1 | 0 | 0 | 0 | 0 | 0 | 0 | 0 | 1 | 55 | 7 | 0 | 0 |
| MICHIGAN | 287 | 1 | 0 | 8 | 3 | 1 | 20 | 0 | 1 | 0 | 0 | 2 | 0 | 1 | 1 | 4 | 2 | 121 | 9 | 2 | 0 |
| MINNESOTA | 135 | 0 | 0 | 1 | 1 | 0 | 5 | 0 | 0 | 0 | 0 | 0 | 0 | 1 | 0 | 2 | 2 | 66 | 8 | 2 | 0 |
| MISSISSIPPI | 27 | 0 | 0 | 0 | 0 | 2 | 1 | 0 | 0 | 0 | 0 | 0 | 0 | 0 | 0 | 0 | 0 | 5 | 2 | 0 | 0 |
| MISSOURI | 133 | 0 | 0 | 5 | 0 | 1 | 6 | 0 | 1 | 0 | 0 | 0 | 0 | 0 | 0 | 3 | 0 | 56 | 12 | 1 | 0 |
| MONTANA | 175 | 1 | 0 | 2 | 0 | 5 | 4 | 0 | 0 | 3 | 0 | 2 | 0 | 5 | 6 | 3 | 1 | 44 | 12 | 0 | 0 |
| NEBRASKA | 55 | 1 | 0 | 5 | 0 | 1 | 4 | 0 | 1 | 2 | 0 | 0 | 0 | 0 | 0 | 2 | 0 | 11 | 1 | 0 | 0 |
| NEVADA | 252 | 0 | 2 | 14 | 0 | 3 | 14 | 0 | 6 | 2 | 1 | 3 | 0 | 5 | 4 | 8 | 1 | 78 | 7 | 0 | 1 |
| NEW HAMPSHIRE | 33 | 0 | 0 | 0 | 0 | 0 | 0 | 0 | 0 | 0 | 0 | 0 | 0 | 1 | 0 | 0 | 0 | 12 | 3 | 0 | 1 |
| NEW JERSEY | 98 | 0 | 0 | 2 | 2 | 0 | 6 | 0 | 0 | 2 | 0 | 0 | 0 | 0 | 1 | 2 | 0 | 48 | 2 | 0 | 0 |
| NEW MEXICO | 78 | 0 | 1 | 6 | 2 | 2 | 4 | 0 | 1 | 0 | 0 | 0 | 0 | 2 | 0 | 2 | 0 | 23 | 2 | 0 | 0 |
| NEW YORK | 228 | 0 | 0 | 4 | 2 | 1 | 8 | 0 | 2 | 1 | 0 | 3 | 0 | 0 | 0 | 3 | 1 | 116 | 10 | 0 | 2 |
| NORTH CAROLINA | 255 | 0 | 1 | 5 | 3 | 1 | 10 | 0 | 1 | 4 | 0 | 2 | 0 | 5 | 3 | 4 | 0 | 106 | 6 | 1 | 0 |
| NORTH DAKOTA | 33 | 0 | 0 | 2 | 0 | 0 | 3 | 0 | 0 | 1 | 0 | 0 | 0 | 2 | 0 | 0 | 0 | 9 | 3 | 1 | 0 |
| OHIO | 150 | 0 | 0 | 6 | 1 | 1 | 2 | 0 | 0 | 0 | 1 | 1 | 0 | 0 | 2 | 0 | 0 | 67 | 10 | 0 | 0 |
| OKLAHOMA | 58 | 0 | 0 | 1 | 1 | 0 | 1 | 0 | 0 | 0 | 0 | 0 | 0 | 3 | 2 | 3 | 0 | 17 | 3 | 0 | 0 |
| OREGON | 1398 | 4 | 3 | 35 | 10 | 15 | 437 | 1 | 51 | 5 | 2 | 33 | 0 | 20 | 10 | 10 | 6 | 244 | 31 | 4 | 27 |
| PENNSYLVANIA | 138 | 0 | 0 | 5 | 0 | 1 | 5 | 0 | 0 | 2 | 1 | 5 | 0 | 0 | 0 | 3 | 0 | 63 | 5 | 0 | 0 |
| RHODE ISLAND | 13 | 0 | 0 | 0 | 0 | 2 | 0 | 0 | 0 | 0 | 0 | 0 | 0 | 0 | 0 | 0 | 1 | 6 | 1 | 0 | 0 |
| SOUTH CAROLINA | 48 | 0 | 0 | 3 | 0 | 5 | 1 | 0 | 0 | 0 | 0 | 0 | 0 | 0 | 1 | 1 | 0 | 13 | 4 | 0 | 0 |
| SOUTH DAKOTA | 34 | 0 | 0 | 0 | 1 | 1 | 1 | 0 | 1 | 0 | 0 | 0 | 0 | 1 | 0 | 0 | 0 | 7 | 3 | 0 | 0 |
| TENNESSEE | 125 | 0 | 2 | 5 | 2 | 1 | 9 | 0 | 6 | 0 | 0 | 0 | 0 | 0 | 0 | 0 | 0 | 54 | 5 | 2 | 0 |
| TEXAS | 491 | 1 | 1 | 14 | 0 | 6 | 28 | 2 | 5 | 0 | 0 | 7 | 0 | 5 | 3 | 18 | 0 | 186 | 19 | 0 | 1 |
| UTAH | 178 | 0 | 0 | 4 | 0 | 2 | 7 | 0 | 3 | 3 | 0 | 1 | 0 | 3 | 3 | 3 | 0 | 54 | 7 | 1 | 0 |
| VERMONT | 23 | 0 | 0 | 0 | 0 | 0 | 0 | 0 | 0 | 0 | 0 | 0 | 0 | 1 | 0 | 0 | 0 | 9 | 1 | 0 | 1 |
| VIRGINIA | 213 | 0 | 0 | 1 | 0 | 2 | 11 | 0 | 0 | 0 | 0 | 2 | 0 | 0 | 0 | 10 | 0 | 86 | 23 | 0 | 0 |
| WASHINGTON | 7 | 0 | 0 | 1 | 0 | 1 | 2 | 0 | 0 | 0 | 0 | 0 | 0 | 0 | 0 | 0 | 0 | 1 | 0 | 0 | 0 |
| WEST VIRGINIA | 21 | 0 | 0 | 0 | 0 | 0 | 1 | 0 | 0 | 0 | 0 | 0 | 0 | 0 | 0 | 0 | 0 | 1 | 3 | 0 | 0 |
| WISCONSIN | 144 | 1 | 0 | 3 | 0 | 0 | 4 | 0 | 1 | 0 | 0 | 0 | 0 | 1 | 0 | 0 | 0 | 59 | 3 | 2 | 0 |
| WYOMING | 56 | 1 | 0 | 1 | 0 | 2 | 4 | 0 | 0 | 0 | 0 | 0 | 0 | 1 | 1 | 5 | 1 | 11 | 4 | 0 | 0 |
| WASHINGTON D.C. | 14 | 0 | 0 | 0 | 0 | 0 | 0 | 0 | 0 | 0 | 0 | 0 | 0 | 0 | 0 | 0 | 0 | 12 | 1 | 0 | 0 |
| ARGENTINA | 0 | 0 | 0 | 0 | 0 | 0 | 0 | 0 | 0 | 0 | 0 | 0 | 0 | 0 | 0 | 0 | 0 | 0 | 0 | 0 | 0 |
| BELIZE (BRIT HONDU) | 0 | 0 | 0 | 0 | 0 | 0 | 0 | 0 | 0 | 0 | 0 | 0 | 0 | 0 | 0 | 0 | 0 | 0 | 0 | 0 | 0 |
| BOLIVIA | 0 | 0 | 0 | 0 | 0 | 0 | 0 | 0 | 0 | 0 | 0 | 0 | 0 | 0 | 0 | 0 | 0 | 0 | 0 | 0 | 0 |
| BRAZIL | 15 | 0 | 0 | 0 | 0 | 0 | 0 | 0 | 3 | 0 | 0 | 0 | 0 | 0 | 0 | 0 | 0 | 11 | 0 | 0 | 0 |

July 2009 Totals by Location Moved From, and By County Moved To

| FROM / TO | TOTAL | GRAYS | | | | | | | | | | | | | | | | | | | |
|-------------------|-------|-------|--------|--------|--------|---------|-------|----------|---------|---------|-------|----------|----------|-------|--------|--------|-----------|------|--------|----------|----------|
| | | ADAMS | ASOTIN | BENTON | CHELAN | CLALLAM | CLARK | COLUMBIA | COWLITZ | DOUGLAS | FERRY | FRANKLIN | GARFIELD | GRANT | HARBOR | ISLAND | JEFFERSON | KING | KITSAP | KITTITAS | KLCKITAT |
| CHILE | 0 | 0 | 0 | 0 | 0 | 0 | 0 | 0 | 0 | 0 | 0 | 0 | 0 | 0 | 0 | 0 | 0 | 0 | 0 | 0 | 0 |
| CANAL ZONE | 0 | 0 | 0 | 0 | 0 | 0 | 0 | 0 | 0 | 0 | 0 | 0 | 0 | 0 | 0 | 0 | 0 | 0 | 0 | 0 | 0 |
| COLUMBIA | 5 | 0 | 0 | 0 | 0 | 0 | 0 | 0 | 0 | 0 | 0 | 0 | 0 | 0 | 0 | 0 | 0 | 3 | 0 | 0 | 0 |
| COSTA RICA | 0 | 0 | 0 | 0 | 0 | 0 | 0 | 0 | 0 | 0 | 0 | 0 | 0 | 0 | 0 | 0 | 0 | 0 | 0 | 0 | 0 |
| EL SALVADOR | 2 | 0 | 0 | 0 | 0 | 0 | 0 | 0 | 0 | 0 | 0 | 0 | 0 | 0 | 0 | 0 | 0 | 0 | 0 | 0 | 0 |
| EQUADOR | 0 | 0 | 0 | 0 | 0 | 0 | 0 | 0 | 0 | 0 | 0 | 0 | 0 | 0 | 0 | 0 | 0 | 0 | 0 | 0 | 0 |
| GUYANA | 0 | 0 | 0 | 0 | 0 | 0 | 0 | 0 | 0 | 0 | 0 | 0 | 0 | 0 | 0 | 0 | 0 | 0 | 0 | 0 | 0 |
| NICARAGUA | 0 | 0 | 0 | 0 | 0 | 0 | 0 | 0 | 0 | 0 | 0 | 0 | 0 | 0 | 0 | 0 | 0 | 0 | 0 | 0 | 0 |
| PANAMA | 0 | 0 | 0 | 0 | 0 | 0 | 0 | 0 | 0 | 0 | 0 | 0 | 0 | 0 | 0 | 0 | 0 | 0 | 0 | 0 | 0 |
| PERU | 2 | 0 | 0 | 0 | 0 | 0 | 0 | 0 | 0 | 2 | 0 | 0 | 0 | 0 | 0 | 0 | 0 | 0 | 0 | 0 | 0 |
| PARAGUAY | 0 | 0 | 0 | 0 | 0 | 0 | 0 | 0 | 0 | 0 | 0 | 0 | 0 | 0 | 0 | 0 | 0 | 0 | 0 | 0 | 0 |
| SURINAM | 0 | 0 | 0 | 0 | 0 | 0 | 0 | 0 | 0 | 0 | 0 | 0 | 0 | 0 | 0 | 0 | 0 | 0 | 0 | 0 | 0 |
| TRINIDAD | 0 | 0 | 0 | 0 | 0 | 0 | 0 | 0 | 0 | 0 | 0 | 0 | 0 | 0 | 0 | 0 | 0 | 0 | 0 | 0 | 0 |
| UPPER VOLTA | 0 | 0 | 0 | 0 | 0 | 0 | 0 | 0 | 0 | 0 | 0 | 0 | 0 | 0 | 0 | 0 | 0 | 0 | 0 | 0 | 0 |
| URUGUAY | 0 | 0 | 0 | 0 | 0 | 0 | 0 | 0 | 0 | 0 | 0 | 0 | 0 | 0 | 0 | 0 | 0 | 0 | 0 | 0 | 0 |
| VENEZUELA | 0 | 0 | 0 | 0 | 0 | 0 | 0 | 0 | 0 | 0 | 0 | 0 | 0 | 0 | 0 | 0 | 0 | 0 | 0 | 0 | 0 |
| ALGERIA | 0 | 0 | 0 | 0 | 0 | 0 | 0 | 0 | 0 | 0 | 0 | 0 | 0 | 0 | 0 | 0 | 0 | 0 | 0 | 0 | 0 |
| ANGOLA | 0 | 0 | 0 | 0 | 0 | 0 | 0 | 0 | 0 | 0 | 0 | 0 | 0 | 0 | 0 | 0 | 0 | 0 | 0 | 0 | 0 |
| CAMERON | 0 | 0 | 0 | 0 | 0 | 0 | 0 | 0 | 0 | 0 | 0 | 0 | 0 | 0 | 0 | 0 | 0 | 0 | 0 | 0 | 0 |
| CHAD | 0 | 0 | 0 | 0 | 0 | 0 | 0 | 0 | 0 | 0 | 0 | 0 | 0 | 0 | 0 | 0 | 0 | 0 | 0 | 0 | 0 |
| CONGO | 0 | 0 | 0 | 0 | 0 | 0 | 0 | 0 | 0 | 0 | 0 | 0 | 0 | 0 | 0 | 0 | 0 | 0 | 0 | 0 | 0 |
| C. AFRICAN REP. | 0 | 0 | 0 | 0 | 0 | 0 | 0 | 0 | 0 | 0 | 0 | 0 | 0 | 0 | 0 | 0 | 0 | 0 | 0 | 0 | 0 |
| BOTSWANA | 0 | 0 | 0 | 0 | 0 | 0 | 0 | 0 | 0 | 0 | 0 | 0 | 0 | 0 | 0 | 0 | 0 | 0 | 0 | 0 | 0 |
| BURUNDI | 2 | 0 | 0 | 0 | 0 | 0 | 0 | 0 | 0 | 0 | 0 | 0 | 0 | 0 | 0 | 0 | 0 | 2 | 0 | 0 | 0 |
| DAHOMEY | 0 | 0 | 0 | 0 | 0 | 0 | 0 | 0 | 0 | 0 | 0 | 0 | 0 | 0 | 0 | 0 | 0 | 0 | 0 | 0 | 0 |
| EQ. GUINEA | 0 | 0 | 0 | 0 | 0 | 0 | 0 | 0 | 0 | 0 | 0 | 0 | 0 | 0 | 0 | 0 | 0 | 0 | 0 | 0 | 0 |
| EGYPT | 0 | 0 | 0 | 0 | 0 | 0 | 0 | 0 | 0 | 0 | 0 | 0 | 0 | 0 | 0 | 0 | 0 | 0 | 0 | 0 | 0 |
| ETHIOPIA | 0 | 0 | 0 | 0 | 0 | 0 | 0 | 0 | 0 | 0 | 0 | 0 | 0 | 0 | 0 | 0 | 0 | 0 | 0 | 0 | 0 |
| GABON | 0 | 0 | 0 | 0 | 0 | 0 | 0 | 0 | 0 | 0 | 0 | 0 | 0 | 0 | 0 | 0 | 0 | 0 | 0 | 0 | 0 |
| GAMBIA | 1 | 0 | 0 | 0 | 0 | 0 | 0 | 0 | 0 | 0 | 0 | 0 | 0 | 0 | 0 | 0 | 0 | 0 | 0 | 0 | 0 |
| GHANA | 0 | 0 | 0 | 0 | 0 | 0 | 0 | 0 | 0 | 0 | 0 | 0 | 0 | 0 | 0 | 0 | 0 | 0 | 0 | 0 | 0 |
| GUINEA | 1 | 0 | 0 | 0 | 0 | 0 | 0 | 0 | 0 | 0 | 0 | 0 | 0 | 0 | 0 | 0 | 0 | 1 | 0 | 0 | 0 |
| IVORY COAST | 0 | 0 | 0 | 0 | 0 | 0 | 0 | 0 | 0 | 0 | 0 | 0 | 0 | 0 | 0 | 0 | 0 | 0 | 0 | 0 | 0 |
| KENYA | 0 | 0 | 0 | 0 | 0 | 0 | 0 | 0 | 0 | 0 | 0 | 0 | 0 | 0 | 0 | 0 | 0 | 0 | 0 | 0 | 0 |
| LIBYA | 0 | 0 | 0 | 0 | 0 | 0 | 0 | 0 | 0 | 0 | 0 | 0 | 0 | 0 | 0 | 0 | 0 | 0 | 0 | 0 | 0 |
| LIBERIA | 0 | 0 | 0 | 0 | 0 | 0 | 0 | 0 | 0 | 0 | 0 | 0 | 0 | 0 | 0 | 0 | 0 | 0 | 0 | 0 | 0 |
| MALAWI | 0 | 0 | 0 | 0 | 0 | 0 | 0 | 0 | 0 | 0 | 0 | 0 | 0 | 0 | 0 | 0 | 0 | 0 | 0 | 0 | 0 |
| MALAGASY | 1 | 0 | 0 | 0 | 0 | 0 | 0 | 0 | 0 | 0 | 0 | 0 | 0 | 0 | 0 | 0 | 0 | 0 | 0 | 0 | 0 |
| MORROCCO | 1 | 0 | 0 | 0 | 0 | 0 | 0 | 0 | 0 | 0 | 0 | 0 | 0 | 0 | 0 | 0 | 0 | 1 | 0 | 0 | 0 |
| MAURITANIA | 0 | 0 | 0 | 0 | 0 | 0 | 0 | 0 | 0 | 0 | 0 | 0 | 0 | 0 | 0 | 0 | 0 | 0 | 0 | 0 | 0 |
| MALI | 0 | 0 | 0 | 0 | 0 | 0 | 0 | 0 | 0 | 0 | 0 | 0 | 0 | 0 | 0 | 0 | 0 | 0 | 0 | 0 | 0 |
| NIGER | 0 | 0 | 0 | 0 | 0 | 0 | 0 | 0 | 0 | 0 | 0 | 0 | 0 | 0 | 0 | 0 | 0 | 0 | 0 | 0 | 0 |
| NIGERIA | 0 | 0 | 0 | 0 | 0 | 0 | 0 | 0 | 0 | 0 | 0 | 0 | 0 | 0 | 0 | 0 | 0 | 0 | 0 | 0 | 0 |
| RHODESIA | 0 | 0 | 0 | 0 | 0 | 0 | 0 | 0 | 0 | 0 | 0 | 0 | 0 | 0 | 0 | 0 | 0 | 0 | 0 | 0 | 0 |
| RWANDA | 0 | 0 | 0 | 0 | 0 | 0 | 0 | 0 | 0 | 0 | 0 | 0 | 0 | 0 | 0 | 0 | 0 | 0 | 0 | 0 | 0 |
| SOUTH AFRICA | 0 | 0 | 0 | 0 | 0 | 0 | 0 | 0 | 0 | 0 | 0 | 0 | 0 | 0 | 0 | 0 | 0 | 0 | 0 | 0 | 0 |
| SOUTH WEST AFRICA | 0 | 0 | 0 | 0 | 0 | 0 | 0 | 0 | 0 | 0 | 0 | 0 | 0 | 0 | 0 | 0 | 0 | 0 | 0 | 0 | 0 |
| SIERRA LEONE | 0 | 0 | 0 | 0 | 0 | 0 | 0 | 0 | 0 | 0 | 0 | 0 | 0 | 0 | 0 | 0 | 0 | 0 | 0 | 0 | 0 |
| SWAZILAND | 1 | 0 | 0 | 0 | 0 | 0 | 0 | 0 | 0 | 0 | 0 | 0 | 0 | 0 | 0 | 0 | 0 | 1 | 0 | 0 | 0 |
| SENEGAL | 0 | 0 | 0 | 0 | 0 | 0 | 0 | 0 | 0 | 0 | 0 | 0 | 0 | 0 | 0 | 0 | 0 | 0 | 0 | 0 | 0 |
| SOMALI REPUBLIC | 0 | 0 | 0 | 0 | 0 | 0 | 0 | 0 | 0 | 0 | 0 | 0 | 0 | 0 | 0 | 0 | 0 | 0 | 0 | 0 | 0 |
| SUDAN | 0 | 0 | 0 | 0 | 0 | 0 | 0 | 0 | 0 | 0 | 0 | 0 | 0 | 0 | 0 | 0 | 0 | 0 | 0 | 0 | 0 |
| TOGO | 0 | 0 | 0 | 0 | 0 | 0 | 0 | 0 | 0 | 0 | 0 | 0 | 0 | 0 | 0 | 0 | 0 | 0 | 0 | 0 | 0 |
| TUNISIA | 0 | 0 | 0 | 0 | 0 | 0 | 0 | 0 | 0 | 0 | 0 | 0 | 0 | 0 | 0 | 0 | 0 | 0 | 0 | 0 | 0 |
| TANZANIA | 0 | 0 | 0 | 0 | 0 | 0 | 0 | 0 | 0 | 0 | 0 | 0 | 0 | 0 | 0 | 0 | 0 | 0 | 0 | 0 | 0 |
| UGANDA | 0 | 0 | 0 | 0 | 0 | 0 | 0 | 0 | 0 | 0 | 0 | 0 | 0 | 0 | 0 | 0 | 0 | 0 | 0 | 0 | 0 |
| ZAIRE | 0 | 0 | 0 | 0 | 0 | 0 | 0 | 0 | 0 | 0 | 0 | 0 | 0 | 0 | 0 | 0 | 0 | 0 | 0 | 0 | 0 |

July 2009 Totals by Location Moved From, and By County Moved To

| FROM / TO | TOTAL | GRAYS | | | | | | | | | | | | | | | | | | | |
|---------------------|-------|-------|--------|--------|--------|---------|-------|----------|---------|---------|-------|----------|----------|-------|--------|--------|-----------|------|--------|----------|----------|
| | | ADAMS | ASOTIN | BENTON | CHELAN | CLALLAM | CLARK | COLUMBIA | COWLITZ | DOUGLAS | FERRY | FRANKLIN | GARFIELD | GRANT | HARBOR | ISLAND | JEFFERSON | KING | KITSAP | KITTITAS | KLCKITAT |
| AFGHANISTAN | 0 | 0 | 0 | 0 | 0 | 0 | 0 | 0 | 0 | 0 | 0 | 0 | 0 | 0 | 0 | 0 | 0 | 0 | 0 | 0 | 0 |
| BANGLADESH | 0 | 0 | 0 | 0 | 0 | 0 | 0 | 0 | 0 | 0 | 0 | 0 | 0 | 0 | 0 | 0 | 0 | 0 | 0 | 0 | 0 |
| BHUTAN | 0 | 0 | 0 | 0 | 0 | 0 | 0 | 0 | 0 | 0 | 0 | 0 | 0 | 0 | 0 | 0 | 0 | 0 | 0 | 0 | 0 |
| BURMA | 0 | 0 | 0 | 0 | 0 | 0 | 0 | 0 | 0 | 0 | 0 | 0 | 0 | 0 | 0 | 0 | 0 | 0 | 0 | 0 | 0 |
| BAHRAIN | 1 | 0 | 0 | 0 | 0 | 0 | 0 | 0 | 0 | 0 | 0 | 0 | 0 | 0 | 0 | 0 | 0 | 1 | 0 | 0 | 0 |
| CEYLON (SRI LANKA) | 1 | 0 | 0 | 0 | 0 | 0 | 0 | 0 | 0 | 0 | 0 | 0 | 0 | 0 | 0 | 0 | 0 | 0 | 0 | 0 | 0 |
| CHINA | 5 | 0 | 0 | 0 | 0 | 0 | 0 | 0 | 0 | 0 | 0 | 0 | 0 | 0 | 0 | 0 | 0 | 3 | 0 | 0 | 0 |
| CAMBODIA | 0 | 0 | 0 | 0 | 0 | 0 | 0 | 0 | 0 | 0 | 0 | 0 | 0 | 0 | 0 | 0 | 0 | 0 | 0 | 0 | 0 |
| CYPRUS | 0 | 0 | 0 | 0 | 0 | 0 | 0 | 0 | 0 | 0 | 0 | 0 | 0 | 0 | 0 | 0 | 0 | 0 | 0 | 0 | 0 |
| JORDAN | 0 | 0 | 0 | 0 | 0 | 0 | 0 | 0 | 0 | 0 | 0 | 0 | 0 | 0 | 0 | 0 | 0 | 0 | 0 | 0 | 0 |
| JAPAN | 3 | 0 | 0 | 0 | 0 | 0 | 0 | 0 | 0 | 0 | 0 | 0 | 0 | 0 | 0 | 0 | 0 | 3 | 0 | 0 | 0 |
| KUWAIT | 0 | 0 | 0 | 0 | 0 | 0 | 0 | 0 | 0 | 0 | 0 | 0 | 0 | 0 | 0 | 0 | 0 | 0 | 0 | 0 | 0 |
| IRAN | 0 | 0 | 0 | 0 | 0 | 0 | 0 | 0 | 0 | 0 | 0 | 0 | 0 | 0 | 0 | 0 | 0 | 0 | 0 | 0 | 0 |
| ISRAEL | 0 | 0 | 0 | 0 | 0 | 0 | 0 | 0 | 0 | 0 | 0 | 0 | 0 | 0 | 0 | 0 | 0 | 0 | 0 | 0 | 0 |
| INDIA | 25 | 0 | 0 | 0 | 0 | 0 | 1 | 0 | 0 | 0 | 0 | 0 | 0 | 0 | 0 | 0 | 0 | 24 | 0 | 0 | 0 |
| IRAQ | 0 | 0 | 0 | 0 | 0 | 0 | 0 | 0 | 0 | 0 | 0 | 0 | 0 | 0 | 0 | 0 | 0 | 0 | 0 | 0 | 0 |
| INDONESIA | 1 | 0 | 0 | 0 | 0 | 0 | 0 | 0 | 0 | 0 | 0 | 0 | 0 | 0 | 0 | 0 | 0 | 1 | 0 | 0 | 0 |
| KOREA | 14 | 0 | 0 | 0 | 0 | 0 | 0 | 0 | 1 | 0 | 0 | 0 | 0 | 0 | 0 | 0 | 0 | 5 | 0 | 0 | 0 |
| LAOS | 0 | 0 | 0 | 0 | 0 | 0 | 0 | 0 | 0 | 0 | 0 | 0 | 0 | 0 | 0 | 0 | 0 | 0 | 0 | 0 | 0 |
| LEBANON | 0 | 0 | 0 | 0 | 0 | 0 | 0 | 0 | 0 | 0 | 0 | 0 | 0 | 0 | 0 | 0 | 0 | 0 | 0 | 0 | 0 |
| MALAYSIA | 0 | 0 | 0 | 0 | 0 | 0 | 0 | 0 | 0 | 0 | 0 | 0 | 0 | 0 | 0 | 0 | 0 | 0 | 0 | 0 | 0 |
| MONGOLIA | 2 | 0 | 0 | 0 | 0 | 0 | 0 | 0 | 0 | 0 | 0 | 0 | 0 | 0 | 0 | 0 | 0 | 2 | 0 | 0 | 0 |
| NEPAL | 0 | 0 | 0 | 0 | 0 | 0 | 0 | 0 | 0 | 0 | 0 | 0 | 0 | 0 | 0 | 0 | 0 | 0 | 0 | 0 | 0 |
| OMAN | 0 | 0 | 0 | 0 | 0 | 0 | 0 | 0 | 0 | 0 | 0 | 0 | 0 | 0 | 0 | 0 | 0 | 0 | 0 | 0 | 0 |
| PAKISTAN | 0 | 0 | 0 | 0 | 0 | 0 | 0 | 0 | 0 | 0 | 0 | 0 | 0 | 0 | 0 | 0 | 0 | 0 | 0 | 0 | 0 |
| QATAR | 0 | 0 | 0 | 0 | 0 | 0 | 0 | 0 | 0 | 0 | 0 | 0 | 0 | 0 | 0 | 0 | 0 | 0 | 0 | 0 | 0 |
| SIKKIM | 0 | 0 | 0 | 0 | 0 | 0 | 0 | 0 | 0 | 0 | 0 | 0 | 0 | 0 | 0 | 0 | 0 | 0 | 0 | 0 | 0 |
| SYRIA | 0 | 0 | 0 | 0 | 0 | 0 | 0 | 0 | 0 | 0 | 0 | 0 | 0 | 0 | 0 | 0 | 0 | 0 | 0 | 0 | 0 |
| SAUDI ARABIA | 1 | 0 | 0 | 0 | 0 | 0 | 0 | 0 | 0 | 0 | 0 | 0 | 0 | 0 | 0 | 0 | 0 | 0 | 0 | 0 | 0 |
| SINGAPORE | 0 | 0 | 0 | 0 | 0 | 0 | 0 | 0 | 0 | 0 | 0 | 0 | 0 | 0 | 0 | 0 | 0 | 0 | 0 | 0 | 0 |
| TAIWAN | 1 | 0 | 0 | 0 | 0 | 0 | 0 | 0 | 0 | 0 | 0 | 0 | 0 | 0 | 0 | 0 | 0 | 0 | 0 | 0 | 0 |
| THAILAND | 0 | 0 | 0 | 0 | 0 | 0 | 0 | 0 | 0 | 0 | 0 | 0 | 0 | 0 | 0 | 0 | 0 | 0 | 0 | 0 | 0 |
| TURKEY | 0 | 0 | 0 | 0 | 0 | 0 | 0 | 0 | 0 | 0 | 0 | 0 | 0 | 0 | 0 | 0 | 0 | 0 | 0 | 0 | 0 |
| USSR | 3 | 0 | 0 | 0 | 0 | 0 | 1 | 0 | 0 | 0 | 0 | 0 | 0 | 0 | 0 | 0 | 0 | 2 | 0 | 0 | 0 |
| UNITED ARAB EMIRATE | 0 | 0 | 0 | 0 | 0 | 0 | 0 | 0 | 0 | 0 | 0 | 0 | 0 | 0 | 0 | 0 | 0 | 0 | 0 | 0 | 0 |
| VIETNAM | 0 | 0 | 0 | 0 | 0 | 0 | 0 | 0 | 0 | 0 | 0 | 0 | 0 | 0 | 0 | 0 | 0 | 0 | 0 | 0 | 0 |
| YEMEN | 0 | 0 | 0 | 0 | 0 | 0 | 0 | 0 | 0 | 0 | 0 | 0 | 0 | 0 | 0 | 0 | 0 | 0 | 0 | 0 | 0 |
| AUSTRIA | 1 | 0 | 0 | 0 | 0 | 0 | 0 | 0 | 0 | 0 | 0 | 0 | 0 | 0 | 0 | 0 | 0 | 1 | 0 | 0 | 0 |
| BULGARIA | 0 | 0 | 0 | 0 | 0 | 0 | 0 | 0 | 0 | 0 | 0 | 0 | 0 | 0 | 0 | 0 | 0 | 0 | 0 | 0 | 0 |
| BELGIUM | 0 | 0 | 0 | 0 | 0 | 0 | 0 | 0 | 0 | 0 | 0 | 0 | 0 | 0 | 0 | 0 | 0 | 0 | 0 | 0 | 0 |
| DENMARK | 0 | 0 | 0 | 0 | 0 | 0 | 0 | 0 | 0 | 0 | 0 | 0 | 0 | 0 | 0 | 0 | 0 | 0 | 0 | 0 | 0 |
| ENGLAND | 5 | 0 | 0 | 0 | 0 | 0 | 0 | 0 | 0 | 0 | 0 | 0 | 0 | 0 | 0 | 0 | 0 | 5 | 0 | 0 | 0 |
| FRANCE | 3 | 0 | 0 | 0 | 0 | 0 | 0 | 0 | 0 | 0 | 0 | 0 | 0 | 0 | 0 | 0 | 0 | 1 | 0 | 0 | 0 |
| FINLAND | 0 | 0 | 0 | 0 | 0 | 0 | 0 | 0 | 0 | 0 | 0 | 0 | 0 | 0 | 0 | 0 | 0 | 0 | 0 | 0 | 0 |
| CZECHOSLAVAKIA | 0 | 0 | 0 | 0 | 0 | 0 | 0 | 0 | 0 | 0 | 0 | 0 | 0 | 0 | 0 | 0 | 0 | 0 | 0 | 0 | 0 |
| GREECE | 3 | 0 | 0 | 0 | 0 | 0 | 0 | 0 | 0 | 0 | 0 | 0 | 0 | 0 | 0 | 0 | 0 | 3 | 0 | 0 | 0 |
| GERMANY | 17 | 0 | 0 | 0 | 0 | 0 | 0 | 0 | 0 | 0 | 0 | 0 | 0 | 0 | 0 | 0 | 0 | 5 | 2 | 0 | 0 |
| IRELAND | 0 | 0 | 0 | 0 | 0 | 0 | 0 | 0 | 0 | 0 | 0 | 0 | 0 | 0 | 0 | 0 | 0 | 0 | 0 | 0 | 0 |
| ITALY | 1 | 0 | 0 | 0 | 0 | 0 | 0 | 0 | 0 | 0 | 0 | 0 | 0 | 0 | 0 | 0 | 0 | 1 | 0 | 0 | 0 |
| HUNGARY | 0 | 0 | 0 | 0 | 0 | 0 | 0 | 0 | 0 | 0 | 0 | 0 | 0 | 0 | 0 | 0 | 0 | 0 | 0 | 0 | 0 |
| LUXEMBOURG | 0 | 0 | 0 | 0 | 0 | 0 | 0 | 0 | 0 | 0 | 0 | 0 | 0 | 0 | 0 | 0 | 0 | 0 | 0 | 0 | 0 |
| NETHERLANDS | 3 | 0 | 0 | 0 | 0 | 2 | 0 | 0 | 0 | 0 | 0 | 0 | 0 | 0 | 0 | 0 | 0 | 1 | 0 | 0 | 0 |
| NORWAY | 0 | 0 | 0 | 0 | 0 | 0 | 0 | 0 | 0 | 0 | 0 | 0 | 0 | 0 | 0 | 0 | 0 | 0 | 0 | 0 | 0 |
| POLAND | 2 | 0 | 0 | 0 | 0 | 0 | 0 | 0 | 0 | 0 | 0 | 0 | 0 | 0 | 0 | 0 | 0 | 1 | 0 | 0 | 0 |
| SPAIN | 1 | 0 | 0 | 0 | 0 | 0 | 0 | 0 | 0 | 0 | 0 | 0 | 0 | 0 | 0 | 0 | 0 | 1 | 0 | 0 | 0 |
| SWITZERLAND | 0 | 0 | 0 | 0 | 0 | 0 | 0 | 0 | 0 | 0 | 0 | 0 | 0 | 0 | 0 | 0 | 0 | 0 | 0 | 0 | 0 |
| SWEDEN | 1 | 0 | 0 | 0 | 0 | 0 | 0 | 0 | 0 | 0 | 0 | 0 | 0 | 0 | 0 | 0 | 0 | 1 | 0 | 0 | 0 |

July 2009 Totals by Location Moved From, and By County Moved To

| FROM / TO | TOTAL | GRAYS | | | | | | | | | | | | | | | | | | | |
|---------------------|--------------|-----------|-----------|------------|-----------|------------|------------|----------|------------|-----------|-----------|------------|----------|------------|-----------|------------|-----------|-------------|------------|-----------|-----------|
| | | ADAMS | ASOTIN | BENTON | CHELAN | CLALLAM | CLARK | COLUMBIA | COWLITZ | DOUGLAS | FERRY | FRANKLIN | GARFIELD | GRANT | HARBOR | ISLAND | JEFFERSON | KING | KITSAP | KITTITAS | KLCKITAT |
| ROMANIA | 4 | 0 | 0 | 0 | 0 | 0 | 1 | 0 | 0 | 0 | 0 | 0 | 0 | 0 | 0 | 0 | 0 | 3 | 0 | 0 | 0 |
| YUGOSLAVIA | 0 | 0 | 0 | 0 | 0 | 0 | 0 | 0 | 0 | 0 | 0 | 0 | 0 | 0 | 0 | 0 | 0 | 0 | 0 | 0 | 0 |
| ALBANIA | 0 | 0 | 0 | 0 | 0 | 0 | 0 | 0 | 0 | 0 | 0 | 0 | 0 | 0 | 0 | 0 | 0 | 0 | 0 | 0 | 0 |
| ANDORRA | 0 | 0 | 0 | 0 | 0 | 0 | 0 | 0 | 0 | 0 | 0 | 0 | 0 | 0 | 0 | 0 | 0 | 0 | 0 | 0 | 0 |
| AMERICAN SAMOA | 9 | 0 | 0 | 0 | 0 | 0 | 0 | 0 | 0 | 0 | 0 | 0 | 0 | 0 | 0 | 0 | 0 | 3 | 0 | 0 | 0 |
| BORNEO | 0 | 0 | 0 | 0 | 0 | 0 | 0 | 0 | 0 | 0 | 0 | 0 | 0 | 0 | 0 | 0 | 0 | 0 | 0 | 0 | 0 |
| CUBA | 0 | 0 | 0 | 0 | 0 | 0 | 0 | 0 | 0 | 0 | 0 | 0 | 0 | 0 | 0 | 0 | 0 | 0 | 0 | 0 | 0 |
| BERMUDA | 0 | 0 | 0 | 0 | 0 | 0 | 0 | 0 | 0 | 0 | 0 | 0 | 0 | 0 | 0 | 0 | 0 | 0 | 0 | 0 | 0 |
| DOMINICAN REPUBLIC | 0 | 0 | 0 | 0 | 0 | 0 | 0 | 0 | 0 | 0 | 0 | 0 | 0 | 0 | 0 | 0 | 0 | 0 | 0 | 0 | 0 |
| FIJI | 2 | 0 | 0 | 0 | 0 | 0 | 0 | 0 | 0 | 0 | 0 | 0 | 0 | 0 | 0 | 0 | 0 | 2 | 0 | 0 | 0 |
| GUAM | 24 | 0 | 0 | 0 | 0 | 0 | 3 | 0 | 0 | 0 | 0 | 0 | 0 | 0 | 0 | 0 | 0 | 9 | 4 | 0 | 0 |
| HAITI | 0 | 0 | 0 | 0 | 0 | 0 | 0 | 0 | 0 | 0 | 0 | 0 | 0 | 0 | 0 | 0 | 0 | 0 | 0 | 0 | 0 |
| JAMAICA | 0 | 0 | 0 | 0 | 0 | 0 | 0 | 0 | 0 | 0 | 0 | 0 | 0 | 0 | 0 | 0 | 0 | 0 | 0 | 0 | 0 |
| NEW ZEALAND | 1 | 0 | 0 | 0 | 0 | 0 | 0 | 0 | 0 | 0 | 0 | 0 | 0 | 0 | 0 | 0 | 0 | 1 | 0 | 0 | 0 |
| PORTUGAL | 0 | 0 | 0 | 0 | 0 | 0 | 0 | 0 | 0 | 0 | 0 | 0 | 0 | 0 | 0 | 0 | 0 | 0 | 0 | 0 | 0 |
| PHILIPPINES | 8 | 0 | 0 | 0 | 0 | 0 | 0 | 0 | 0 | 0 | 0 | 0 | 0 | 0 | 0 | 1 | 0 | 5 | 0 | 0 | 0 |
| PUERTO RICO | 9 | 0 | 0 | 0 | 0 | 0 | 0 | 0 | 0 | 0 | 0 | 0 | 0 | 0 | 0 | 0 | 0 | 1 | 2 | 0 | 0 |
| TAHITI | 0 | 0 | 0 | 0 | 0 | 0 | 0 | 0 | 0 | 0 | 0 | 0 | 0 | 0 | 0 | 0 | 0 | 0 | 0 | 0 | 0 |
| TONGA | 0 | 0 | 0 | 0 | 0 | 0 | 0 | 0 | 0 | 0 | 0 | 0 | 0 | 0 | 0 | 0 | 0 | 0 | 0 | 0 | 0 |
| VIRGIN ISLANDS | 1 | 0 | 0 | 0 | 0 | 0 | 0 | 0 | 0 | 0 | 0 | 0 | 0 | 0 | 0 | 0 | 0 | 0 | 1 | 0 | 0 |
| WEST SAMOA | 0 | 0 | 0 | 0 | 0 | 0 | 0 | 0 | 0 | 0 | 0 | 0 | 0 | 0 | 0 | 0 | 0 | 0 | 0 | 0 | 0 |
| AUSTRALIA | 0 | 0 | 0 | 0 | 0 | 0 | 0 | 0 | 0 | 0 | 0 | 0 | 0 | 0 | 0 | 0 | 0 | 0 | 0 | 0 | 0 |
| ANTARTICA | 0 | 0 | 0 | 0 | 0 | 0 | 0 | 0 | 0 | 0 | 0 | 0 | 0 | 0 | 0 | 0 | 0 | 0 | 0 | 0 | 0 |
| ICELAND | 0 | 0 | 0 | 0 | 0 | 0 | 0 | 0 | 0 | 0 | 0 | 0 | 0 | 0 | 0 | 0 | 0 | 0 | 0 | 0 | 0 |
| GREENLAND | 0 | 0 | 0 | 0 | 0 | 0 | 0 | 0 | 0 | 0 | 0 | 0 | 0 | 0 | 0 | 0 | 0 | 0 | 0 | 0 | 0 |
| MEXICO | 98 | 0 | 0 | 3 | 9 | 0 | 2 | 0 | 0 | 10 | 0 | 13 | 0 | 4 | 0 | 1 | 0 | 14 | 3 | 0 | 0 |
| ALBERTA | 10 | 0 | 0 | 2 | 0 | 0 | 1 | 0 | 0 | 0 | 0 | 0 | 0 | 0 | 0 | 0 | 0 | 6 | 0 | 0 | 0 |
| BRITISH COLUMBIA | 92 | 0 | 0 | 0 | 0 | 1 | 0 | 0 | 0 | 0 | 0 | 0 | 0 | 0 | 0 | 0 | 1 | 53 | 0 | 0 | 0 |
| MANITOBA | 0 | 0 | 0 | 0 | 0 | 0 | 0 | 0 | 0 | 0 | 0 | 0 | 0 | 0 | 0 | 0 | 0 | 0 | 0 | 0 | 0 |
| NEW BRUNSWICK | 0 | 0 | 0 | 0 | 0 | 0 | 0 | 0 | 0 | 0 | 0 | 0 | 0 | 0 | 0 | 0 | 0 | 0 | 0 | 0 | 0 |
| NEWFOUNDLAND | 0 | 0 | 0 | 0 | 0 | 0 | 0 | 0 | 0 | 0 | 0 | 0 | 0 | 0 | 0 | 0 | 0 | 0 | 0 | 0 | 0 |
| NOVA SCOTIA | 4 | 0 | 0 | 0 | 0 | 0 | 0 | 0 | 0 | 0 | 0 | 0 | 0 | 0 | 0 | 0 | 0 | 3 | 0 | 0 | 0 |
| ONTARIO | 17 | 0 | 0 | 0 | 0 | 0 | 2 | 0 | 0 | 0 | 0 | 0 | 0 | 0 | 0 | 0 | 0 | 14 | 0 | 0 | 0 |
| PRINCE EDWARD IS. | 0 | 0 | 0 | 0 | 0 | 0 | 0 | 0 | 0 | 0 | 0 | 0 | 0 | 0 | 0 | 0 | 0 | 0 | 0 | 0 | 0 |
| QUEBEC | 5 | 0 | 0 | 0 | 0 | 0 | 0 | 0 | 0 | 0 | 0 | 0 | 0 | 0 | 0 | 0 | 0 | 5 | 0 | 0 | 0 |
| SASKATCHEWAN | 0 | 0 | 0 | 0 | 0 | 0 | 0 | 0 | 0 | 0 | 0 | 0 | 0 | 0 | 0 | 0 | 0 | 0 | 0 | 0 | 0 |
| NORTHWEST TERRITORY | 0 | 0 | 0 | 0 | 0 | 0 | 0 | 0 | 0 | 0 | 0 | 0 | 0 | 0 | 0 | 0 | 0 | 0 | 0 | 0 | 0 |
| YUKON TERRITORY | 0 | 0 | 0 | 0 | 0 | 0 | 0 | 0 | 0 | 0 | 0 | 0 | 0 | 0 | 0 | 0 | 0 | 0 | 0 | 0 | 0 |
| UNKNOWN | 72 | 0 | 1 | 4 | 1 | 0 | 4 | 0 | 0 | 1 | 0 | 0 | 0 | 0 | 3 | 1 | 1 | 24 | 2 | 1 | 0 |
| ** TOTAL ** | 10280 | 16 | 56 | 264 | 80 | 150 | 888 | 3 | 134 | 50 | 14 | 108 | 0 | 107 | 81 | 182 | 44 | 3476 | 505 | 41 | 48 |

July 2009 Totals by Location Moved From, and By County Moved To

| FROM / TO | LEWIS | LINCOLN | MASON | OKANAGON | PACIFIC | PEND OREILLE | PIERCE | SAN JUAN | SKAGIT | SKAMANIA | SNOHOMISH | SPOKANE | STEVENS | THURSTON | WAHIAKAKUM | WALLA WALLA | WHATCOM | WHITMAN | YAKIMA | UNKNOWN |
|---------------------|-------|---------|-------|----------|---------|--------------|--------|----------|--------|----------|-----------|---------|---------|----------|------------|-------------|---------|---------|--------|---------|
| ALABAMA | 0 | 0 | 0 | 0 | 0 | 0 | 13 | 0 | 0 | 0 | 2 | 2 | 0 | 2 | 0 | 0 | 0 | 1 | 0 | 0 |
| ALASKA | 5 | 3 | 1 | 3 | 0 | 1 | 26 | 0 | 3 | 1 | 15 | 18 | 1 | 8 | 0 | 4 | 10 | 3 | 3 | 0 |
| ARIZONA | 2 | 1 | 3 | 4 | 0 | 0 | 33 | 0 | 5 | 0 | 23 | 33 | 3 | 18 | 0 | 1 | 19 | 1 | 9 | 1 |
| ARKANSAS | 1 | 0 | 1 | 0 | 0 | 0 | 5 | 0 | 4 | 0 | 2 | 5 | 0 | 2 | 0 | 0 | 0 | 3 | 4 | 0 |
| CALIFORNIA | 24 | 1 | 18 | 4 | 11 | 4 | 218 | 5 | 37 | 2 | 141 | 114 | 13 | 64 | 1 | 17 | 92 | 12 | 41 | 0 |
| COLORADO | 2 | 0 | 1 | 2 | 1 | 0 | 29 | 2 | 7 | 0 | 15 | 14 | 1 | 12 | 0 | 5 | 8 | 1 | 2 | 0 |
| CONNECTICUT | 0 | 0 | 0 | 0 | 0 | 0 | 1 | 1 | 0 | 0 | 2 | 2 | 0 | 3 | 0 | 0 | 1 | 1 | 0 | 0 |
| DELAWARE | 0 | 0 | 0 | 0 | 0 | 0 | 1 | 0 | 0 | 0 | 0 | 0 | 0 | 1 | 0 | 0 | 0 | 0 | 0 | 0 |
| FLORIDA | 2 | 0 | 2 | 2 | 4 | 1 | 35 | 0 | 5 | 0 | 25 | 19 | 2 | 12 | 0 | 1 | 15 | 1 | 8 | 0 |
| GEORGIA | 0 | 0 | 2 | 0 | 0 | 0 | 25 | 0 | 3 | 0 | 9 | 6 | 0 | 12 | 0 | 0 | 0 | 0 | 4 | 0 |
| HAWAII | 0 | 0 | 1 | 0 | 0 | 0 | 30 | 2 | 3 | 0 | 12 | 7 | 0 | 3 | 0 | 0 | 6 | 0 | 0 | 0 |
| IDAHO | 10 | 2 | 4 | 1 | 1 | 3 | 16 | 1 | 8 | 0 | 28 | 72 | 6 | 13 | 0 | 6 | 10 | 16 | 14 | 0 |
| ILLINOIS | 2 | 0 | 1 | 0 | 1 | 0 | 22 | 0 | 1 | 0 | 25 | 4 | 1 | 6 | 0 | 1 | 7 | 2 | 7 | 0 |
| INDIANA | 2 | 0 | 0 | 0 | 0 | 0 | 18 | 0 | 0 | 0 | 5 | 2 | 0 | 6 | 0 | 0 | 3 | 0 | 2 | 0 |
| IOWA | 0 | 1 | 0 | 0 | 0 | 0 | 2 | 1 | 0 | 0 | 5 | 6 | 2 | 2 | 0 | 2 | 3 | 0 | 2 | 0 |
| KANSAS | 1 | 0 | 0 | 0 | 0 | 0 | 13 | 0 | 2 | 0 | 7 | 5 | 0 | 2 | 0 | 0 | 4 | 0 | 3 | 0 |
| KENTUCKY | 1 | 0 | 1 | 1 | 0 | 0 | 12 | 0 | 0 | 0 | 1 | 0 | 1 | 7 | 0 | 0 | 0 | 1 | 3 | 0 |
| LOUISIANA | 0 | 0 | 1 | 1 | 0 | 0 | 13 | 0 | 0 | 0 | 2 | 3 | 0 | 2 | 0 | 0 | 1 | 0 | 0 | 0 |
| MAINE | 0 | 0 | 0 | 0 | 0 | 0 | 3 | 1 | 0 | 0 | 4 | 0 | 0 | 0 | 0 | 0 | 2 | 0 | 4 | 0 |
| MARYLAND | 0 | 0 | 0 | 0 | 0 | 0 | 12 | 0 | 0 | 0 | 7 | 2 | 0 | 1 | 0 | 0 | 4 | 0 | 0 | 0 |
| MASSACHUSETTS | 0 | 0 | 0 | 0 | 0 | 0 | 7 | 0 | 2 | 0 | 8 | 2 | 0 | 4 | 0 | 0 | 1 | 0 | 0 | 0 |
| MICHIGAN | 1 | 0 | 3 | 0 | 1 | 0 | 30 | 1 | 4 | 0 | 25 | 3 | 0 | 11 | 0 | 3 | 15 | 4 | 10 | 0 |
| MINNESOTA | 1 | 0 | 0 | 0 | 0 | 0 | 11 | 0 | 0 | 0 | 6 | 7 | 0 | 6 | 0 | 3 | 9 | 1 | 3 | 0 |
| MISSISSIPPI | 0 | 0 | 1 | 0 | 0 | 0 | 5 | 0 | 2 | 0 | 4 | 2 | 0 | 1 | 0 | 0 | 0 | 2 | 0 | 0 |
| MISSOURI | 1 | 0 | 1 | 0 | 0 | 0 | 18 | 1 | 1 | 0 | 5 | 6 | 0 | 5 | 0 | 2 | 5 | 0 | 3 | 0 |
| MONTANA | 0 | 1 | 1 | 1 | 2 | 0 | 9 | 2 | 5 | 0 | 22 | 24 | 2 | 4 | 0 | 0 | 3 | 4 | 7 | 0 |
| NEBRASKA | 3 | 0 | 0 | 0 | 0 | 0 | 7 | 0 | 0 | 0 | 3 | 3 | 0 | 1 | 0 | 2 | 6 | 0 | 2 | 0 |
| NEVADA | 3 | 0 | 1 | 3 | 4 | 0 | 23 | 1 | 4 | 0 | 15 | 15 | 0 | 14 | 0 | 0 | 11 | 1 | 8 | 0 |
| NEW HAMPSHIRE | 0 | 0 | 0 | 0 | 0 | 0 | 7 | 0 | 0 | 0 | 3 | 2 | 0 | 1 | 0 | 0 | 1 | 0 | 2 | 0 |
| NEW JERSEY | 0 | 0 | 0 | 0 | 0 | 0 | 14 | 0 | 0 | 0 | 3 | 3 | 0 | 7 | 0 | 1 | 3 | 1 | 1 | 0 |
| NEW MEXICO | 0 | 0 | 1 | 0 | 0 | 1 | 11 | 1 | 1 | 0 | 1 | 3 | 1 | 5 | 0 | 1 | 7 | 0 | 0 | 0 |
| NEW YORK | 1 | 0 | 2 | 0 | 0 | 0 | 19 | 2 | 1 | 0 | 14 | 8 | 0 | 21 | 0 | 0 | 4 | 2 | 1 | 0 |
| NORTH CAROLINA | 1 | 0 | 0 | 0 | 1 | 0 | 27 | 0 | 4 | 0 | 14 | 13 | 2 | 11 | 0 | 5 | 3 | 2 | 20 | 0 |
| NORTH DAKOTA | 0 | 0 | 0 | 0 | 0 | 0 | 4 | 0 | 0 | 0 | 1 | 1 | 1 | 2 | 0 | 0 | 0 | 0 | 3 | 0 |
| OHIO | 2 | 0 | 0 | 1 | 0 | 0 | 20 | 0 | 0 | 0 | 11 | 9 | 0 | 8 | 0 | 0 | 3 | 0 | 5 | 0 |
| OKLAHOMA | 0 | 0 | 1 | 1 | 0 | 0 | 9 | 0 | 0 | 0 | 6 | 2 | 0 | 5 | 0 | 0 | 1 | 2 | 0 | 0 |
| OREGON | 24 | 0 | 9 | 7 | 18 | 1 | 89 | 3 | 20 | 8 | 65 | 51 | 5 | 31 | 1 | 40 | 20 | 3 | 53 | 2 |
| PENNSYLVANIA | 0 | 0 | 3 | 1 | 0 | 0 | 11 | 0 | 0 | 0 | 10 | 8 | 1 | 5 | 0 | 0 | 2 | 4 | 3 | 0 |
| RHODE ISLAND | 0 | 0 | 0 | 0 | 0 | 0 | 0 | 0 | 0 | 0 | 2 | 0 | 0 | 0 | 0 | 0 | 0 | 0 | 1 | 0 |
| SOUTH CAROLINA | 0 | 0 | 0 | 0 | 0 | 0 | 6 | 0 | 1 | 0 | 6 | 4 | 0 | 2 | 0 | 0 | 1 | 0 | 0 | 0 |
| SOUTH DAKOTA | 0 | 0 | 0 | 0 | 3 | 0 | 1 | 0 | 1 | 0 | 2 | 4 | 0 | 1 | 0 | 0 | 6 | 1 | 0 | 0 |
| TENNESSEE | 0 | 0 | 0 | 1 | 0 | 0 | 23 | 0 | 0 | 0 | 5 | 2 | 0 | 1 | 0 | 1 | 4 | 0 | 2 | 0 |
| TEXAS | 6 | 1 | 4 | 0 | 2 | 0 | 67 | 2 | 7 | 0 | 34 | 20 | 0 | 22 | 0 | 2 | 22 | 0 | 6 | 0 |
| UTAH | 2 | 0 | 0 | 1 | 1 | 0 | 18 | 1 | 3 | 0 | 18 | 13 | 1 | 8 | 0 | 1 | 5 | 2 | 13 | 0 |
| VERMONT | 0 | 0 | 0 | 0 | 0 | 0 | 1 | 0 | 0 | 0 | 1 | 0 | 1 | 2 | 0 | 0 | 6 | 0 | 0 | 0 |
| VIRGINIA | 1 | 0 | 1 | 0 | 0 | 0 | 36 | 0 | 2 | 0 | 13 | 6 | 0 | 10 | 0 | 2 | 4 | 2 | 1 | 0 |
| WASHINGTON | 0 | 0 | 0 | 0 | 0 | 0 | 0 | 0 | 0 | 0 | 2 | 0 | 0 | 0 | 0 | 0 | 0 | 0 | 0 | 0 |
| WEST VIRGINIA | 0 | 0 | 0 | 0 | 0 | 0 | 6 | 0 | 1 | 0 | 2 | 5 | 0 | 2 | 0 | 0 | 0 | 0 | 0 | 0 |
| WISCONSIN | 0 | 0 | 0 | 1 | 1 | 0 | 21 | 0 | 2 | 0 | 13 | 7 | 1 | 7 | 0 | 2 | 9 | 1 | 5 | 0 |
| WYOMING | 2 | 0 | 1 | 2 | 0 | 0 | 6 | 0 | 1 | 0 | 2 | 3 | 1 | 2 | 0 | 0 | 3 | 0 | 2 | 0 |
| WASHINGTON D.C. | 0 | 0 | 0 | 0 | 0 | 0 | 0 | 0 | 0 | 0 | 0 | 0 | 0 | 0 | 0 | 0 | 0 | 1 | 0 | 0 |
| ARGENTINA | 0 | 0 | 0 | 0 | 0 | 0 | 0 | 0 | 0 | 0 | 0 | 0 | 0 | 0 | 0 | 0 | 0 | 0 | 0 | 0 |
| BELIZE (BRIT HONDU) | 0 | 0 | 0 | 0 | 0 | 0 | 0 | 0 | 0 | 0 | 0 | 0 | 0 | 0 | 0 | 0 | 0 | 0 | 0 | 0 |
| BOLIVIA | 0 | 0 | 0 | 0 | 0 | 0 | 0 | 0 | 0 | 0 | 0 | 0 | 0 | 0 | 0 | 0 | 0 | 0 | 0 | 0 |
| BRAZIL | 0 | 0 | 0 | 0 | 0 | 0 | 0 | 0 | 0 | 0 | 1 | 0 | 0 | 0 | 0 | 0 | 0 | 0 | 0 | 0 |

July 2009 Totals by Location Moved From, and By County Moved To

| FROM / TO | LEWIS | LINCOLN | MASON | OKANAGON | PACIFIC | PEND OREILLE | PIERCE | SAN JUAN | SKAGIT | SKAMANIA | SNOHOMISH | SPOKANE | STEVENS | THURSTON | WAHAKIACUM | WALLA WALLA | WHATCOM | WHITMAN | YAKIMA | UNKNOWN |
|-------------------|-------|---------|-------|----------|---------|--------------|--------|----------|--------|----------|-----------|---------|---------|----------|------------|-------------|---------|---------|--------|---------|
| CHILE | 0 | 0 | 0 | 0 | 0 | 0 | 0 | 0 | 0 | 0 | 0 | 0 | 0 | 0 | 0 | 0 | 0 | 0 | 0 | 0 |
| CANAL ZONE | 0 | 0 | 0 | 0 | 0 | 0 | 0 | 0 | 0 | 0 | 0 | 0 | 0 | 0 | 0 | 0 | 0 | 0 | 0 | 0 |
| COLUMBIA | 0 | 0 | 0 | 0 | 0 | 0 | 0 | 0 | 0 | 0 | 2 | 0 | 0 | 0 | 0 | 0 | 0 | 0 | 0 | 0 |
| COSTA RICA | 0 | 0 | 0 | 0 | 0 | 0 | 0 | 0 | 0 | 0 | 0 | 0 | 0 | 0 | 0 | 0 | 0 | 0 | 0 | 0 |
| EL SALVADOR | 0 | 0 | 0 | 0 | 0 | 0 | 0 | 0 | 0 | 0 | 0 | 0 | 0 | 1 | 0 | 1 | 0 | 0 | 0 | 0 |
| EQUADOR | 0 | 0 | 0 | 0 | 0 | 0 | 0 | 0 | 0 | 0 | 0 | 0 | 0 | 0 | 0 | 0 | 0 | 0 | 0 | 0 |
| GUYANA | 0 | 0 | 0 | 0 | 0 | 0 | 0 | 0 | 0 | 0 | 0 | 0 | 0 | 0 | 0 | 0 | 0 | 0 | 0 | 0 |
| NICARAGUA | 0 | 0 | 0 | 0 | 0 | 0 | 0 | 0 | 0 | 0 | 0 | 0 | 0 | 0 | 0 | 0 | 0 | 0 | 0 | 0 |
| PANAMA | 0 | 0 | 0 | 0 | 0 | 0 | 0 | 0 | 0 | 0 | 0 | 0 | 0 | 0 | 0 | 0 | 0 | 0 | 0 | 0 |
| PERU | 0 | 0 | 0 | 0 | 0 | 0 | 0 | 0 | 0 | 0 | 0 | 0 | 0 | 0 | 0 | 0 | 0 | 0 | 0 | 0 |
| PARAGUAY | 0 | 0 | 0 | 0 | 0 | 0 | 0 | 0 | 0 | 0 | 0 | 0 | 0 | 0 | 0 | 0 | 0 | 0 | 0 | 0 |
| SURINAM | 0 | 0 | 0 | 0 | 0 | 0 | 0 | 0 | 0 | 0 | 0 | 0 | 0 | 0 | 0 | 0 | 0 | 0 | 0 | 0 |
| TRINIDAD | 0 | 0 | 0 | 0 | 0 | 0 | 0 | 0 | 0 | 0 | 0 | 0 | 0 | 0 | 0 | 0 | 0 | 0 | 0 | 0 |
| UPPER VOLTA | 0 | 0 | 0 | 0 | 0 | 0 | 0 | 0 | 0 | 0 | 0 | 0 | 0 | 0 | 0 | 0 | 0 | 0 | 0 | 0 |
| URUGUAY | 0 | 0 | 0 | 0 | 0 | 0 | 0 | 0 | 0 | 0 | 0 | 0 | 0 | 0 | 0 | 0 | 0 | 0 | 0 | 0 |
| VENEZUELA | 0 | 0 | 0 | 0 | 0 | 0 | 0 | 0 | 0 | 0 | 0 | 0 | 0 | 0 | 0 | 0 | 0 | 0 | 0 | 0 |
| ALGERIA | 0 | 0 | 0 | 0 | 0 | 0 | 0 | 0 | 0 | 0 | 0 | 0 | 0 | 0 | 0 | 0 | 0 | 0 | 0 | 0 |
| ANGOLA | 0 | 0 | 0 | 0 | 0 | 0 | 0 | 0 | 0 | 0 | 0 | 0 | 0 | 0 | 0 | 0 | 0 | 0 | 0 | 0 |
| CAMERON | 0 | 0 | 0 | 0 | 0 | 0 | 0 | 0 | 0 | 0 | 0 | 0 | 0 | 0 | 0 | 0 | 0 | 0 | 0 | 0 |
| CHAD | 0 | 0 | 0 | 0 | 0 | 0 | 0 | 0 | 0 | 0 | 0 | 0 | 0 | 0 | 0 | 0 | 0 | 0 | 0 | 0 |
| CONGO | 0 | 0 | 0 | 0 | 0 | 0 | 0 | 0 | 0 | 0 | 0 | 0 | 0 | 0 | 0 | 0 | 0 | 0 | 0 | 0 |
| C. AFRICAN REP. | 0 | 0 | 0 | 0 | 0 | 0 | 0 | 0 | 0 | 0 | 0 | 0 | 0 | 0 | 0 | 0 | 0 | 0 | 0 | 0 |
| BOTSWANA | 0 | 0 | 0 | 0 | 0 | 0 | 0 | 0 | 0 | 0 | 0 | 0 | 0 | 0 | 0 | 0 | 0 | 0 | 0 | 0 |
| BURUNDI | 0 | 0 | 0 | 0 | 0 | 0 | 0 | 0 | 0 | 0 | 0 | 0 | 0 | 0 | 0 | 0 | 0 | 0 | 0 | 0 |
| DAHOMY | 0 | 0 | 0 | 0 | 0 | 0 | 0 | 0 | 0 | 0 | 0 | 0 | 0 | 0 | 0 | 0 | 0 | 0 | 0 | 0 |
| EQ. GUINEA | 0 | 0 | 0 | 0 | 0 | 0 | 0 | 0 | 0 | 0 | 0 | 0 | 0 | 0 | 0 | 0 | 0 | 0 | 0 | 0 |
| EGYPT | 0 | 0 | 0 | 0 | 0 | 0 | 0 | 0 | 0 | 0 | 0 | 0 | 0 | 0 | 0 | 0 | 0 | 0 | 0 | 0 |
| ETHIOPIA | 0 | 0 | 0 | 0 | 0 | 0 | 0 | 0 | 0 | 0 | 0 | 0 | 0 | 0 | 0 | 0 | 0 | 0 | 0 | 0 |
| GABON | 0 | 0 | 0 | 0 | 0 | 0 | 0 | 0 | 0 | 0 | 0 | 0 | 0 | 0 | 0 | 0 | 0 | 0 | 0 | 0 |
| GAMBIA | 0 | 0 | 0 | 0 | 0 | 0 | 0 | 0 | 0 | 0 | 1 | 0 | 0 | 0 | 0 | 0 | 0 | 0 | 0 | 0 |
| GHANA | 0 | 0 | 0 | 0 | 0 | 0 | 0 | 0 | 0 | 0 | 0 | 0 | 0 | 0 | 0 | 0 | 0 | 0 | 0 | 0 |
| GUINEA | 0 | 0 | 0 | 0 | 0 | 0 | 0 | 0 | 0 | 0 | 0 | 0 | 0 | 0 | 0 | 0 | 0 | 0 | 0 | 0 |
| IVORY COAST | 0 | 0 | 0 | 0 | 0 | 0 | 0 | 0 | 0 | 0 | 0 | 0 | 0 | 0 | 0 | 0 | 0 | 0 | 0 | 0 |
| KENYA | 0 | 0 | 0 | 0 | 0 | 0 | 0 | 0 | 0 | 0 | 0 | 0 | 0 | 0 | 0 | 0 | 0 | 0 | 0 | 0 |
| LIBYA | 0 | 0 | 0 | 0 | 0 | 0 | 0 | 0 | 0 | 0 | 0 | 0 | 0 | 0 | 0 | 0 | 0 | 0 | 0 | 0 |
| LIBERIA | 0 | 0 | 0 | 0 | 0 | 0 | 0 | 0 | 0 | 0 | 0 | 0 | 0 | 0 | 0 | 0 | 0 | 0 | 0 | 0 |
| MALAWI | 0 | 0 | 0 | 0 | 0 | 0 | 0 | 0 | 0 | 0 | 0 | 0 | 0 | 0 | 0 | 0 | 0 | 0 | 0 | 0 |
| MALAGASY | 0 | 0 | 0 | 0 | 0 | 0 | 0 | 0 | 0 | 0 | 1 | 0 | 0 | 0 | 0 | 0 | 0 | 0 | 0 | 0 |
| MORROCCO | 0 | 0 | 0 | 0 | 0 | 0 | 0 | 0 | 0 | 0 | 0 | 0 | 0 | 0 | 0 | 0 | 0 | 0 | 0 | 0 |
| MAURITANIA | 0 | 0 | 0 | 0 | 0 | 0 | 0 | 0 | 0 | 0 | 0 | 0 | 0 | 0 | 0 | 0 | 0 | 0 | 0 | 0 |
| MALI | 0 | 0 | 0 | 0 | 0 | 0 | 0 | 0 | 0 | 0 | 0 | 0 | 0 | 0 | 0 | 0 | 0 | 0 | 0 | 0 |
| NIGER | 0 | 0 | 0 | 0 | 0 | 0 | 0 | 0 | 0 | 0 | 0 | 0 | 0 | 0 | 0 | 0 | 0 | 0 | 0 | 0 |
| NIGERIA | 0 | 0 | 0 | 0 | 0 | 0 | 0 | 0 | 0 | 0 | 0 | 0 | 0 | 0 | 0 | 0 | 0 | 0 | 0 | 0 |
| RHODESIA | 0 | 0 | 0 | 0 | 0 | 0 | 0 | 0 | 0 | 0 | 0 | 0 | 0 | 0 | 0 | 0 | 0 | 0 | 0 | 0 |
| RWANDA | 0 | 0 | 0 | 0 | 0 | 0 | 0 | 0 | 0 | 0 | 0 | 0 | 0 | 0 | 0 | 0 | 0 | 0 | 0 | 0 |
| SOUTH AFRICA | 0 | 0 | 0 | 0 | 0 | 0 | 0 | 0 | 0 | 0 | 0 | 0 | 0 | 0 | 0 | 0 | 0 | 0 | 0 | 0 |
| SOUTH WEST AFRICA | 0 | 0 | 0 | 0 | 0 | 0 | 0 | 0 | 0 | 0 | 0 | 0 | 0 | 0 | 0 | 0 | 0 | 0 | 0 | 0 |
| SIERRA LEONE | 0 | 0 | 0 | 0 | 0 | 0 | 0 | 0 | 0 | 0 | 0 | 0 | 0 | 0 | 0 | 0 | 0 | 0 | 0 | 0 |
| SWAZILAND | 0 | 0 | 0 | 0 | 0 | 0 | 0 | 0 | 0 | 0 | 0 | 0 | 0 | 0 | 0 | 0 | 0 | 0 | 0 | 0 |
| SENEGAL | 0 | 0 | 0 | 0 | 0 | 0 | 0 | 0 | 0 | 0 | 0 | 0 | 0 | 0 | 0 | 0 | 0 | 0 | 0 | 0 |
| SOMALI REPUBLIC | 0 | 0 | 0 | 0 | 0 | 0 | 0 | 0 | 0 | 0 | 0 | 0 | 0 | 0 | 0 | 0 | 0 | 0 | 0 | 0 |
| SUDAN | 0 | 0 | 0 | 0 | 0 | 0 | 0 | 0 | 0 | 0 | 0 | 0 | 0 | 0 | 0 | 0 | 0 | 0 | 0 | 0 |
| TOGO | 0 | 0 | 0 | 0 | 0 | 0 | 0 | 0 | 0 | 0 | 0 | 0 | 0 | 0 | 0 | 0 | 0 | 0 | 0 | 0 |
| TUNISIA | 0 | 0 | 0 | 0 | 0 | 0 | 0 | 0 | 0 | 0 | 0 | 0 | 0 | 0 | 0 | 0 | 0 | 0 | 0 | 0 |
| TANZANIA | 0 | 0 | 0 | 0 | 0 | 0 | 0 | 0 | 0 | 0 | 0 | 0 | 0 | 0 | 0 | 0 | 0 | 0 | 0 | 0 |
| UGANDA | 0 | 0 | 0 | 0 | 0 | 0 | 0 | 0 | 0 | 0 | 0 | 0 | 0 | 0 | 0 | 0 | 0 | 0 | 0 | 0 |
| ZAIRE | 0 | 0 | 0 | 0 | 0 | 0 | 0 | 0 | 0 | 0 | 0 | 0 | 0 | 0 | 0 | 0 | 0 | 0 | 0 | 0 |

July 2009 Totals by Location Moved From, and By County Moved To

| FROM / TO | LEWIS | LINCOLN | MASON | OKANAGON | PACIFIC | PEND OREILLE | PIERCE | SAN JUAN | SKAGIT | SKAMANIA | SNOHOMISH | SPOKANE | STEVENS | THURSTON | WAHKIAKUM | WALLA WALLA | WHATCOM | WHITMAN | YAKIMA | UNKNOWN |
|---------------------|-------|---------|-------|----------|---------|--------------|--------|----------|--------|----------|-----------|---------|---------|----------|-----------|-------------|---------|---------|--------|---------|
| AFGHANISTAN | 0 | 0 | 0 | 0 | 0 | 0 | 0 | 0 | 0 | 0 | 0 | 0 | 0 | 0 | 0 | 0 | 0 | 0 | 0 | 0 |
| BANGLADESH | 0 | 0 | 0 | 0 | 0 | 0 | 0 | 0 | 0 | 0 | 0 | 0 | 0 | 0 | 0 | 0 | 0 | 0 | 0 | 0 |
| BHUTAN | 0 | 0 | 0 | 0 | 0 | 0 | 0 | 0 | 0 | 0 | 0 | 0 | 0 | 0 | 0 | 0 | 0 | 0 | 0 | 0 |
| BURMA | 0 | 0 | 0 | 0 | 0 | 0 | 0 | 0 | 0 | 0 | 0 | 0 | 0 | 0 | 0 | 0 | 0 | 0 | 0 | 0 |
| BAHRAIN | 0 | 0 | 0 | 0 | 0 | 0 | 0 | 0 | 0 | 0 | 0 | 0 | 0 | 0 | 0 | 0 | 0 | 0 | 0 | 0 |
| CEYLON (SRI LANKA) | 0 | 0 | 0 | 0 | 0 | 0 | 0 | 0 | 0 | 0 | 0 | 0 | 0 | 0 | 0 | 0 | 0 | 1 | 0 | 0 |
| CHINA | 0 | 0 | 0 | 0 | 0 | 0 | 0 | 0 | 0 | 0 | 0 | 0 | 0 | 0 | 0 | 0 | 0 | 2 | 0 | 0 |
| CAMBODIA | 0 | 0 | 0 | 0 | 0 | 0 | 0 | 0 | 0 | 0 | 0 | 0 | 0 | 0 | 0 | 0 | 0 | 0 | 0 | 0 |
| CYPRUS | 0 | 0 | 0 | 0 | 0 | 0 | 0 | 0 | 0 | 0 | 0 | 0 | 0 | 0 | 0 | 0 | 0 | 0 | 0 | 0 |
| JORDAN | 0 | 0 | 0 | 0 | 0 | 0 | 0 | 0 | 0 | 0 | 0 | 0 | 0 | 0 | 0 | 0 | 0 | 0 | 0 | 0 |
| JAPAN | 0 | 0 | 0 | 0 | 0 | 0 | 0 | 0 | 0 | 0 | 0 | 0 | 0 | 0 | 0 | 0 | 0 | 0 | 0 | 0 |
| KUWAIT | 0 | 0 | 0 | 0 | 0 | 0 | 0 | 0 | 0 | 0 | 0 | 0 | 0 | 0 | 0 | 0 | 0 | 0 | 0 | 0 |
| IRAN | 0 | 0 | 0 | 0 | 0 | 0 | 0 | 0 | 0 | 0 | 0 | 0 | 0 | 0 | 0 | 0 | 0 | 0 | 0 | 0 |
| ISRAEL | 0 | 0 | 0 | 0 | 0 | 0 | 0 | 0 | 0 | 0 | 0 | 0 | 0 | 0 | 0 | 0 | 0 | 0 | 0 | 0 |
| INDIA | 0 | 0 | 0 | 0 | 0 | 0 | 0 | 0 | 0 | 0 | 0 | 0 | 0 | 0 | 0 | 0 | 0 | 0 | 0 | 0 |
| IRAQ | 0 | 0 | 0 | 0 | 0 | 0 | 0 | 0 | 0 | 0 | 0 | 0 | 0 | 0 | 0 | 0 | 0 | 0 | 0 | 0 |
| INDONESIA | 0 | 0 | 0 | 0 | 0 | 0 | 0 | 0 | 0 | 0 | 0 | 0 | 0 | 0 | 0 | 0 | 0 | 0 | 0 | 0 |
| KOREA | 0 | 0 | 0 | 0 | 0 | 0 | 2 | 0 | 0 | 0 | 3 | 0 | 0 | 1 | 0 | 0 | 0 | 2 | 0 | 0 |
| LAOS | 0 | 0 | 0 | 0 | 0 | 0 | 0 | 0 | 0 | 0 | 0 | 0 | 0 | 0 | 0 | 0 | 0 | 0 | 0 | 0 |
| LEBANON | 0 | 0 | 0 | 0 | 0 | 0 | 0 | 0 | 0 | 0 | 0 | 0 | 0 | 0 | 0 | 0 | 0 | 0 | 0 | 0 |
| MALAYSIA | 0 | 0 | 0 | 0 | 0 | 0 | 0 | 0 | 0 | 0 | 0 | 0 | 0 | 0 | 0 | 0 | 0 | 0 | 0 | 0 |
| MONGOLIA | 0 | 0 | 0 | 0 | 0 | 0 | 0 | 0 | 0 | 0 | 0 | 0 | 0 | 0 | 0 | 0 | 0 | 0 | 0 | 0 |
| NEPAL | 0 | 0 | 0 | 0 | 0 | 0 | 0 | 0 | 0 | 0 | 0 | 0 | 0 | 0 | 0 | 0 | 0 | 0 | 0 | 0 |
| OMAN | 0 | 0 | 0 | 0 | 0 | 0 | 0 | 0 | 0 | 0 | 0 | 0 | 0 | 0 | 0 | 0 | 0 | 0 | 0 | 0 |
| PAKISTAN | 0 | 0 | 0 | 0 | 0 | 0 | 0 | 0 | 0 | 0 | 0 | 0 | 0 | 0 | 0 | 0 | 0 | 0 | 0 | 0 |
| QATAR | 0 | 0 | 0 | 0 | 0 | 0 | 0 | 0 | 0 | 0 | 0 | 0 | 0 | 0 | 0 | 0 | 0 | 0 | 0 | 0 |
| SIKKIM | 0 | 0 | 0 | 0 | 0 | 0 | 0 | 0 | 0 | 0 | 0 | 0 | 0 | 0 | 0 | 0 | 0 | 0 | 0 | 0 |
| SYRIA | 0 | 0 | 0 | 0 | 0 | 0 | 0 | 0 | 0 | 0 | 0 | 0 | 0 | 0 | 0 | 0 | 0 | 0 | 0 | 0 |
| SAUDI ARABIA | 0 | 0 | 0 | 0 | 0 | 0 | 0 | 0 | 0 | 0 | 0 | 0 | 0 | 0 | 0 | 0 | 0 | 1 | 0 | 0 |
| SINGAPORE | 0 | 0 | 0 | 0 | 0 | 0 | 0 | 0 | 0 | 0 | 0 | 0 | 0 | 0 | 0 | 0 | 0 | 0 | 0 | 0 |
| TAIWAN | 0 | 0 | 0 | 0 | 0 | 0 | 0 | 0 | 0 | 0 | 0 | 0 | 0 | 0 | 0 | 0 | 0 | 1 | 0 | 0 |
| THAILAND | 0 | 0 | 0 | 0 | 0 | 0 | 0 | 0 | 0 | 0 | 0 | 0 | 0 | 0 | 0 | 0 | 0 | 0 | 0 | 0 |
| TURKEY | 0 | 0 | 0 | 0 | 0 | 0 | 0 | 0 | 0 | 0 | 0 | 0 | 0 | 0 | 0 | 0 | 0 | 0 | 0 | 0 |
| USSR | 0 | 0 | 0 | 0 | 0 | 0 | 0 | 0 | 0 | 0 | 0 | 0 | 0 | 0 | 0 | 0 | 0 | 0 | 0 | 0 |
| UNITED ARAB EMIRATE | 0 | 0 | 0 | 0 | 0 | 0 | 0 | 0 | 0 | 0 | 0 | 0 | 0 | 0 | 0 | 0 | 0 | 0 | 0 | 0 |
| VIETNAM | 0 | 0 | 0 | 0 | 0 | 0 | 0 | 0 | 0 | 0 | 0 | 0 | 0 | 0 | 0 | 0 | 0 | 0 | 0 | 0 |
| YEMEN | 0 | 0 | 0 | 0 | 0 | 0 | 0 | 0 | 0 | 0 | 0 | 0 | 0 | 0 | 0 | 0 | 0 | 0 | 0 | 0 |
| AUSTRIA | 0 | 0 | 0 | 0 | 0 | 0 | 0 | 0 | 0 | 0 | 0 | 0 | 0 | 0 | 0 | 0 | 0 | 0 | 0 | 0 |
| BULGARIA | 0 | 0 | 0 | 0 | 0 | 0 | 0 | 0 | 0 | 0 | 0 | 0 | 0 | 0 | 0 | 0 | 0 | 0 | 0 | 0 |
| BELGIUM | 0 | 0 | 0 | 0 | 0 | 0 | 0 | 0 | 0 | 0 | 0 | 0 | 0 | 0 | 0 | 0 | 0 | 0 | 0 | 0 |
| DENMARK | 0 | 0 | 0 | 0 | 0 | 0 | 0 | 0 | 0 | 0 | 0 | 0 | 0 | 0 | 0 | 0 | 0 | 0 | 0 | 0 |
| ENGLAND | 0 | 0 | 0 | 0 | 0 | 0 | 0 | 0 | 0 | 0 | 0 | 0 | 0 | 0 | 0 | 0 | 0 | 0 | 0 | 0 |
| FRANCE | 0 | 0 | 0 | 0 | 0 | 0 | 0 | 0 | 0 | 0 | 2 | 0 | 0 | 0 | 0 | 0 | 0 | 0 | 0 | 0 |
| FINLAND | 0 | 0 | 0 | 0 | 0 | 0 | 0 | 0 | 0 | 0 | 0 | 0 | 0 | 0 | 0 | 0 | 0 | 0 | 0 | 0 |
| CZECHOSLAVAKIA | 0 | 0 | 0 | 0 | 0 | 0 | 0 | 0 | 0 | 0 | 0 | 0 | 0 | 0 | 0 | 0 | 0 | 0 | 0 | 0 |
| GREECE | 0 | 0 | 0 | 0 | 0 | 0 | 0 | 0 | 0 | 0 | 0 | 0 | 0 | 0 | 0 | 0 | 0 | 0 | 0 | 0 |
| GERMANY | 0 | 0 | 0 | 1 | 0 | 0 | 3 | 0 | 0 | 0 | 2 | 0 | 0 | 4 | 0 | 0 | 0 | 0 | 0 | 0 |
| IRELAND | 0 | 0 | 0 | 0 | 0 | 0 | 0 | 0 | 0 | 0 | 0 | 0 | 0 | 0 | 0 | 0 | 0 | 0 | 0 | 0 |
| ITALY | 0 | 0 | 0 | 0 | 0 | 0 | 0 | 0 | 0 | 0 | 0 | 0 | 0 | 0 | 0 | 0 | 0 | 0 | 0 | 0 |
| HUNGARY | 0 | 0 | 0 | 0 | 0 | 0 | 0 | 0 | 0 | 0 | 0 | 0 | 0 | 0 | 0 | 0 | 0 | 0 | 0 | 0 |
| LUXEMBOURG | 0 | 0 | 0 | 0 | 0 | 0 | 0 | 0 | 0 | 0 | 0 | 0 | 0 | 0 | 0 | 0 | 0 | 0 | 0 | 0 |
| NETHERLANDS | 0 | 0 | 0 | 0 | 0 | 0 | 0 | 0 | 0 | 0 | 0 | 0 | 0 | 0 | 0 | 0 | 0 | 0 | 0 | 0 |
| NORWAY | 0 | 0 | 0 | 0 | 0 | 0 | 0 | 0 | 0 | 0 | 0 | 0 | 0 | 0 | 0 | 0 | 0 | 0 | 0 | 0 |
| POLAND | 0 | 0 | 0 | 0 | 0 | 0 | 1 | 0 | 0 | 0 | 0 | 0 | 0 | 0 | 0 | 0 | 0 | 0 | 0 | 0 |
| SPAIN | 0 | 0 | 0 | 0 | 0 | 0 | 0 | 0 | 0 | 0 | 0 | 0 | 0 | 0 | 0 | 0 | 0 | 0 | 0 | 0 |
| SWITZERLAND | 0 | 0 | 0 | 0 | 0 | 0 | 0 | 0 | 0 | 0 | 0 | 0 | 0 | 0 | 0 | 0 | 0 | 0 | 0 | 0 |
| SWEDEN | 0 | 0 | 0 | 0 | 0 | 0 | 0 | 0 | 0 | 0 | 0 | 0 | 0 | 0 | 0 | 0 | 0 | 0 | 0 | 0 |

July 2009 Totals by Location Moved From, and By County Moved To

| FROM / TO | LEWIS | LINCOLN | MASON | OKANAGON | PACIFIC | PEND OREILLE | PIERCE | SAN JUAN | SKAGIT | SKAMANIA | SNOHOMISH | SPOKANE | STEVENS | THURSTON | WAHKIAKUM | WALLA WALLA | WHATCOM | WHITMAN | YAKIMA | UNKNOWN |
|---------------------|------------|-----------|-----------|-----------|-----------|-----------------|-------------|-------------|------------|-----------|------------|------------|-----------|------------|-----------|----------------|------------|-----------|------------|----------|
| ROMANIA | 0 | 0 | 0 | 0 | 0 | 0 | 0 | 0 | 0 | 0 | 0 | 0 | 0 | 0 | 0 | 0 | 0 | 0 | 0 | 0 |
| YUGOSLAVIA | 0 | 0 | 0 | 0 | 0 | 0 | 0 | 0 | 0 | 0 | 0 | 0 | 0 | 0 | 0 | 0 | 0 | 0 | 0 | 0 |
| ALBANIA | 0 | 0 | 0 | 0 | 0 | 0 | 0 | 0 | 0 | 0 | 0 | 0 | 0 | 0 | 0 | 0 | 0 | 0 | 0 | 0 |
| ANDORRA | 0 | 0 | 0 | 0 | 0 | 0 | 0 | 0 | 0 | 0 | 0 | 0 | 0 | 0 | 0 | 0 | 0 | 0 | 0 | 0 |
| AMERICAN SAMOA | 0 | 0 | 1 | 0 | 0 | 0 | 5 | 0 | 0 | 0 | 0 | 0 | 0 | 0 | 0 | 0 | 0 | 0 | 0 | 0 |
| BORNEO | 0 | 0 | 0 | 0 | 0 | 0 | 0 | 0 | 0 | 0 | 0 | 0 | 0 | 0 | 0 | 0 | 0 | 0 | 0 | 0 |
| CUBA | 0 | 0 | 0 | 0 | 0 | 0 | 0 | 0 | 0 | 0 | 0 | 0 | 0 | 0 | 0 | 0 | 0 | 0 | 0 | 0 |
| BERMUDA | 0 | 0 | 0 | 0 | 0 | 0 | 0 | 0 | 0 | 0 | 0 | 0 | 0 | 0 | 0 | 0 | 0 | 0 | 0 | 0 |
| DOMINICAN REPUBLIC | 0 | 0 | 0 | 0 | 0 | 0 | 0 | 0 | 0 | 0 | 0 | 0 | 0 | 0 | 0 | 0 | 0 | 0 | 0 | 0 |
| FIJI | 0 | 0 | 0 | 0 | 0 | 0 | 0 | 0 | 0 | 0 | 0 | 0 | 0 | 0 | 0 | 0 | 0 | 0 | 0 | 0 |
| GUAM | 0 | 0 | 0 | 0 | 0 | 0 | 3 | 0 | 0 | 0 | 1 | 2 | 0 | 0 | 0 | 1 | 1 | 0 | 0 | 0 |
| HAITI | 0 | 0 | 0 | 0 | 0 | 0 | 0 | 0 | 0 | 0 | 0 | 0 | 0 | 0 | 0 | 0 | 0 | 0 | 0 | 0 |
| JAMAICA | 0 | 0 | 0 | 0 | 0 | 0 | 0 | 0 | 0 | 0 | 0 | 0 | 0 | 0 | 0 | 0 | 0 | 0 | 0 | 0 |
| NEW ZEALAND | 0 | 0 | 0 | 0 | 0 | 0 | 0 | 0 | 0 | 0 | 0 | 0 | 0 | 0 | 0 | 0 | 0 | 0 | 0 | 0 |
| PORTUGAL | 0 | 0 | 0 | 0 | 0 | 0 | 0 | 0 | 0 | 0 | 0 | 0 | 0 | 0 | 0 | 0 | 0 | 0 | 0 | 0 |
| PHILIPPINES | 0 | 0 | 0 | 0 | 1 | 0 | 0 | 0 | 0 | 0 | 0 | 0 | 0 | 0 | 0 | 1 | 0 | 0 | 0 | 0 |
| PUERTO RICO | 0 | 0 | 0 | 1 | 0 | 0 | 4 | 0 | 0 | 0 | 0 | 0 | 1 | 0 | 0 | 0 | 0 | 0 | 0 | 0 |
| TAHITI | 0 | 0 | 0 | 0 | 0 | 0 | 0 | 0 | 0 | 0 | 0 | 0 | 0 | 0 | 0 | 0 | 0 | 0 | 0 | 0 |
| TONGA | 0 | 0 | 0 | 0 | 0 | 0 | 0 | 0 | 0 | 0 | 0 | 0 | 0 | 0 | 0 | 0 | 0 | 0 | 0 | 0 |
| VIRGIN ISLANDS | 0 | 0 | 0 | 0 | 0 | 0 | 0 | 0 | 0 | 0 | 0 | 0 | 0 | 0 | 0 | 0 | 0 | 0 | 0 | 0 |
| WEST SAMOA | 0 | 0 | 0 | 0 | 0 | 0 | 0 | 0 | 0 | 0 | 0 | 0 | 0 | 0 | 0 | 0 | 0 | 0 | 0 | 0 |
| AUSTRALIA | 0 | 0 | 0 | 0 | 0 | 0 | 0 | 0 | 0 | 0 | 0 | 0 | 0 | 0 | 0 | 0 | 0 | 0 | 0 | 0 |
| ANTARTICA | 0 | 0 | 0 | 0 | 0 | 0 | 0 | 0 | 0 | 0 | 0 | 0 | 0 | 0 | 0 | 0 | 0 | 0 | 0 | 0 |
| ICELAND | 0 | 0 | 0 | 0 | 0 | 0 | 0 | 0 | 0 | 0 | 0 | 0 | 0 | 0 | 0 | 0 | 0 | 0 | 0 | 0 |
| GREENLAND | 0 | 0 | 0 | 0 | 0 | 0 | 0 | 0 | 0 | 0 | 0 | 0 | 0 | 0 | 0 | 0 | 0 | 0 | 0 | 0 |
| MEXICO | 0 | 0 | 1 | 2 | 0 | 0 | 4 | 1 | 1 | 0 | 7 | 2 | 0 | 1 | 0 | 6 | 1 | 2 | 11 | 0 |
| ALBERTA | 0 | 0 | 0 | 0 | 0 | 0 | 0 | 0 | 0 | 0 | 1 | 0 | 0 | 0 | 0 | 0 | 0 | 0 | 0 | 0 |
| BRITISH COLUMBIA | 0 | 0 | 0 | 4 | 0 | 0 | 2 | 1 | 2 | 0 | 4 | 3 | 1 | 2 | 0 | 2 | 16 | 0 | 0 | 0 |
| MANITOBA | 0 | 0 | 0 | 0 | 0 | 0 | 0 | 0 | 0 | 0 | 0 | 0 | 0 | 0 | 0 | 0 | 0 | 0 | 0 | 0 |
| NEW BRUNSWICK | 0 | 0 | 0 | 0 | 0 | 0 | 0 | 0 | 0 | 0 | 0 | 0 | 0 | 0 | 0 | 0 | 0 | 0 | 0 | 0 |
| NEWFOUNDLAND | 0 | 0 | 0 | 0 | 0 | 0 | 0 | 0 | 0 | 0 | 0 | 0 | 0 | 0 | 0 | 0 | 0 | 0 | 0 | 0 |
| NOVA SCOTIA | 0 | 0 | 0 | 0 | 0 | 0 | 0 | 0 | 0 | 0 | 1 | 0 | 0 | 0 | 0 | 0 | 0 | 0 | 0 | 0 |
| ONTARIO | 0 | 0 | 0 | 0 | 0 | 0 | 0 | 0 | 0 | 0 | 0 | 0 | 0 | 0 | 0 | 1 | 0 | 0 | 0 | 0 |
| PRINCE EDWARD IS. | 0 | 0 | 0 | 0 | 0 | 0 | 0 | 0 | 0 | 0 | 0 | 0 | 0 | 0 | 0 | 0 | 0 | 0 | 0 | 0 |
| QUEBEC | 0 | 0 | 0 | 0 | 0 | 0 | 0 | 0 | 0 | 0 | 0 | 0 | 0 | 0 | 0 | 0 | 0 | 0 | 0 | 0 |
| SASKATCHEWAN | 0 | 0 | 0 | 0 | 0 | 0 | 0 | 0 | 0 | 0 | 0 | 0 | 0 | 0 | 0 | 0 | 0 | 0 | 0 | 0 |
| NORTHWEST TERRITORY | 0 | 0 | 0 | 0 | 0 | 0 | 0 | 0 | 0 | 0 | 0 | 0 | 0 | 0 | 0 | 0 | 0 | 0 | 0 | 0 |
| YUKON TERRITORY | 0 | 0 | 0 | 0 | 0 | 0 | 0 | 0 | 0 | 0 | 0 | 0 | 0 | 0 | 0 | 0 | 0 | 0 | 0 | 0 |
| UNKNOWN | 2 | 0 | 2 | 0 | 0 | 0 | 9 | 0 | 2 | 0 | 6 | 3 | 1 | 2 | 0 | 0 | 1 | 0 | 1 | 0 |
| ** TOTAL ** | 102 | 10 | 69 | 45 | 52 | 11 | 1066 | 29 | 145 | 11 | 678 | 550 | 49 | 386 | 2 | 114 | 358 | 84 | 269 | 3 |