



STATE OF WASHINGTON
DEPARTMENT OF LICENSING
PO Box 9035 • Olympia, Washington 98507-9035

July 9, 2009

Washington State Drivers Report for June 2009

The monthly report for June 2009 tabulates Washington drivers' license (WDL) activity. The table below summarizes WDL migration in and out of Washington State. It also identifies the top three in-migration states. This data generates a net increase series. The reported month of surrendered WDLs is a reflection of the month Washington received the information and not when the driver left Washington. Therefore, the net increase is an estimate of net migration. Beginning with the April 1998 data, this report and supporting documentation are available via e-mail at the address below. Our formats are PDF for the report and Excel for the data files.

During the month of June (May 30, 2009 to June 27, 2009), a total of 9,658 out-of-state drivers obtained a Washington driver license. This is 1,362 fewer than the 11,020 who obtained licenses in June of 2008 (May 31, 2008 to June 28, 2008). Net migration to Washington for June 2009 was 5,449 drivers, compared to 4,853 the same month last year. For the 12 months ending June 2009, 136,739 out-of-state drivers obtained a Washington driver license, a decrease over the same period a year ago by about 1 percent.

The table below displays data using a 12-month moving sum to help smooth out the monthly variance and reveal the trend. The graphs on the attached file display the results of this smoothing. The first graph plots new drivers moving into Washington as well as the net increase.

	Jun 2009			Year Ending Jun 2009		
	2008	2009	% Change	2008	2009	% Change
Total Drivers In	11,020	9,658	-12.4	137,680	136,739	-0.7
California	2,034	1,786	-12.2	27,856	26,435	-5.1
Oregon	1,442	1,494	3.6	17,754	19,470	9.7
Texas	497	424	-14.7	6,705	6,272	-6.5
Returned WDL*	6,167	4,209	-31.7	67,771	62,667	-7.5
Net Increase	4,853	5,449	12.3	69,909	74,072	6.0

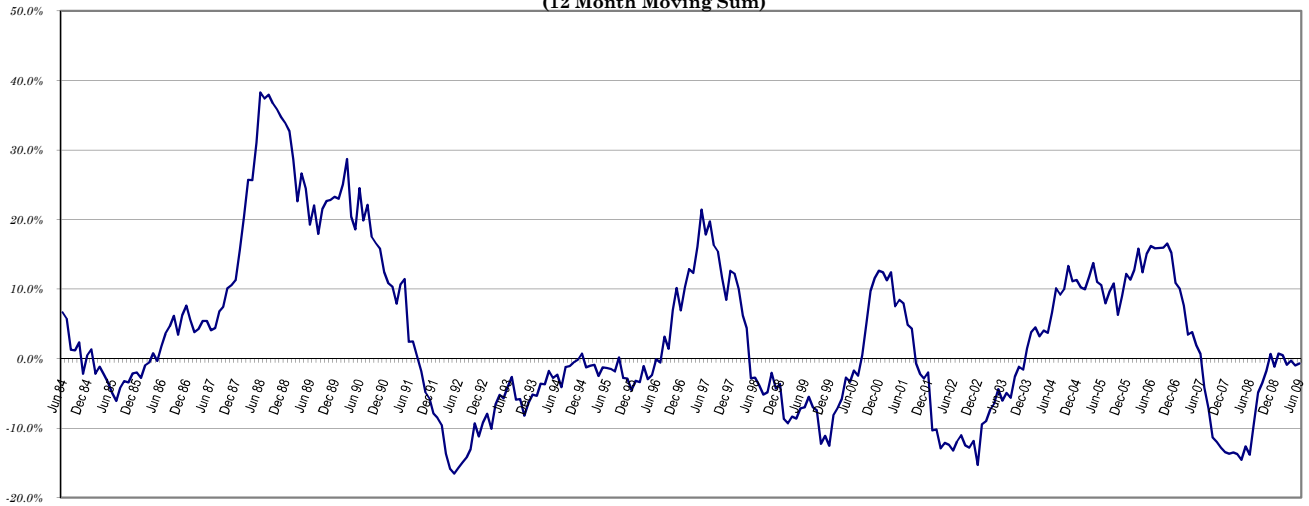
* Reliability of the surrendered license data is limited due to incomplete reporting (e.g. California only reports commercial driver licenses surrendered) as well as delays in the notification process by other jurisdictions.

Alice Vogel, Economic Analyst
Department of Licensing
Office of Budget and Economic Analysis
Highways and Licensing Building
Olympia, WA 98501-48018
(360) 902-3986
FAX: (360) 753-7500
E-Mail: avogel@dol.wa.gov

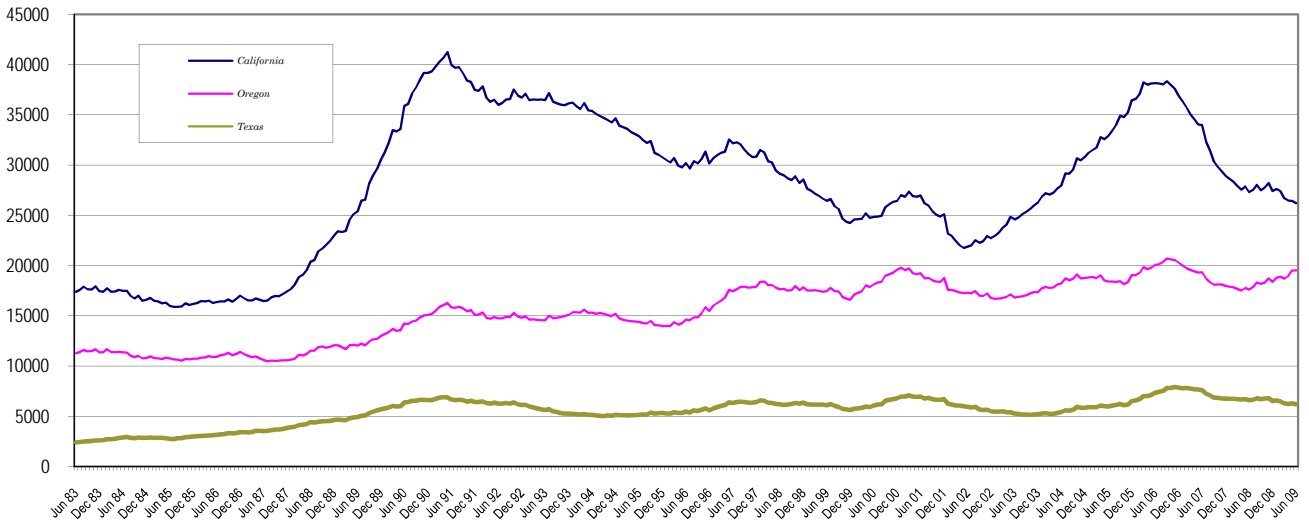
**Washington State Driver's Licenses
(12 Month Moving Sum)**



**% Change Year Ago
(12 Month Moving Sum)**



**Largest States
(12 Months Moving Sum)**



Net Increase States

Month: **June 2009**

State	IN	OUT	Net in Migration
ALABAMA	45	16	29
ALASKA	174	133	41
ARIZONA	405	0	405
ARKANSAS	47	67	(20)
CALIFORNIA	1786	18	1,768
COLORADO	233	316	(83)
CONNECTICUT	45	0	45
DELAWARE	7	4	3
FLORIDA	352	175	177
GEORGIA	150	237	(87)
HAWAII	160	157	3
IDAHO	344	540	(196)
ILLINOIS	168	61	107
INDIANA	95	52	43
IOWA	55	0	55
KANSAS	90	86	4
KENTUCKY	46	30	16
LOUISIANA	61	40	21
MAINE	42	7	35
MARYLAND	68	110	(42)
MASSACHUSETTS	102	0	102
MICHIGAN	249	32	217
MINNESOTA	117	72	45
MISSISSIPPI	26	20	6
MISSOURI	100	45	55
MONTANA	189	202	(13)
NEBRASKA	58	79	(21)
NEVADA	251	0	251
NEW HAMPSHIRE	21	20	1
NEW JERSEY	85	79	6
NEW MEXICO	95	21	74
NEW YORK	146	147	(1)
NORTH CAROLINA	280	79	201
NORTH DAKOTA	30	265	(235)
OHIO	145	155	(10)
OKLAHOMA	59	1	58
OREGON	1494	480	1,014
PENNSYLVANIA	163	0	163
RHODE ISLAND	17	0	17
SOUTH CAROLINA	46	119	(73)
SOUTH DAKOTA	47	48	(1)
TENNESSEE	121	0	121
TEXAS	424	0	424
UTAH	184	170	14
VERMONT	14	1	13
VIRGINIA	179	0	179
WASHINGTON	5	0	5
WEST VIRGINIA	21	9	12
WISCONSIN	140	87	53
WYOMING	37	29	8
WASH. DC	19	0	19
OUTSIDE U.S.	421	0	421
TOTAL	9,658	4,209	5,449

June 2009 Totals by Location Moved From, and By County Moved To

FROM / TO	TOTAL	GRAYS																			
		ADAMS	ASOTIN	BENTON	CHELAN	CLALLAM	CLARK	COLUMBIA	COWLITZ	DOUGLAS	FERRY	FRANKLIN	GARFIELD	GRANT	HARBOR	ISLAND	JEFFERSON	KING	KITSAP	KITTITAS	KLCKITAT
ALABAMA	45	0	0	2	0	0	1	0	0	0	0	0	0	0	1	0	11	3	0	0	
ALASKA	174	0	1	5	0	4	10	0	2	0	1	3	0	2	4	2	1	48	2	1	0
ARIZONA	405	2	1	14	2	7	28	1	6	4	0	3	0	4	1	9	3	119	19	2	2
ARKANSAS	47	0	0	0	0	1	1	0	1	0	0	0	0	1	1	1	0	12	5	2	0
CALIFORNIA	1786	3	2	30	20	30	105	0	17	8	4	19	0	20	6	40	18	686	80	7	1
COLORADO	233	0	0	6	3	5	15	0	6	2	0	1	0	1	2	3	2	74	17	1	1
CONNECTICUT	45	0	0	0	3	2	3	0	0	0	0	0	0	0	0	0	0	21	4	0	0
DELAWARE	7	0	0	0	0	0	0	0	0	0	0	0	0	0	0	0	0	4	0	0	0
FLORIDA	352	0	0	5	2	0	14	0	9	0	0	4	0	5	2	15	0	122	23	1	1
GEORGIA	150	0	0	3	0	0	11	0	1	0	0	0	0	2	1	2	0	61	11	1	0
HAWAII	160	0	0	2	0	5	9	0	1	0	1	2	0	1	1	4	1	62	10	0	2
IDAHO	344	0	32	20	2	4	9	2	4	0	0	8	0	4	5	4	1	59	7	2	0
ILLINOIS	168	0	0	2	0	3	6	0	0	0	0	0	0	1	2	3	1	78	10	0	0
INDIANA	95	0	0	3	1	1	9	0	0	1	0	0	0	1	1	1	1	29	4	1	0
IOWA	55	0	0	0	0	0	2	0	1	0	0	0	0	0	0	1	0	25	2	0	0
KANSAS	90	0	0	2	1	1	0	0	1	0	0	2	0	3	0	3	0	35	4	0	0
KENTUCKY	46	0	0	1	2	1	5	0	1	0	0	1	0	1	0	1	0	12	3	0	0
LOUISIANA	61	0	0	0	0	1	1	0	2	0	0	0	0	4	1	1	0	21	3	1	0
MAINE	42	0	0	0	0	0	7	0	0	0	0	0	0	0	1	0	2	14	5	0	0
MARYLAND	68	0	0	4	0	1	2	0	0	0	0	0	0	1	0	1	0	29	4	0	1
MASSACHUSETTS	102	0	0	0	1	0	2	0	1	0	0	0	0	0	0	0	0	70	4	0	0
MICHIGAN	249	0	0	2	2	1	13	0	2	1	0	0	0	3	0	3	2	130	8	0	0
MINNESOTA	117	1	0	1	0	1	8	0	2	0	0	0	0	1	0	0	1	53	3	1	0
MISSISSIPPI	26	0	0	1	1	0	3	0	0	0	0	0	0	0	0	1	0	4	1	0	1
MISSOURI	100	0	0	0	0	1	3	0	0	0	0	0	0	1	0	4	0	32	6	1	0
MONTANA	189	4	0	4	4	4	8	2	2	1	1	4	0	4	3	0	2	48	8	2	0
NEBRASKA	58	0	0	3	1	1	4	0	1	0	0	0	0	2	0	2	0	16	1	0	0
NEVADA	251	0	0	20	0	7	15	0	1	2	0	1	0	2	1	2	2	65	9	0	0
NEW HAMPSHIRE	21	0	0	1	0	0	1	0	0	0	0	1	0	0	0	0	0	8	0	0	0
NEW JERSEY	85	0	0	3	2	1	5	0	1	0	0	0	0	0	0	3	0	41	3	0	0
NEW MEXICO	95	0	0	8	2	2	6	0	0	0	0	2	1	2	1	2	2	27	3	1	0
NEW YORK	146	0	0	5	1	0	6	0	1	1	0	2	0	0	1	1	0	86	8	0	0
NORTH CAROLINA	280	1	2	3	3	0	12	0	4	3	0	1	0	5	2	1	0	115	9	2	0
NORTH DAKOTA	30	0	0	1	0	0	2	0	1	0	0	0	0	0	0	0	1	6	0	0	0
OHIO	145	0	0	3	0	1	8	0	0	0	0	2	0	0	0	3	0	56	7	0	0
OKLAHOMA	59	0	0	1	0	2	0	0	1	0	0	3	0	2	0	0	0	12	3	0	1
OREGON	1494	0	9	56	8	10	525	2	55	2	1	34	0	22	11	8	6	249	43	4	27
PENNSYLVANIA	163	0	0	3	3	1	4	0	0	1	0	0	0	0	0	3	1	86	5	1	1
RHODE ISLAND	17	0	0	0	0	1	0	0	0	0	0	0	0	0	0	0	0	13	0	0	0
SOUTH CAROLINA	46	0	0	2	0	0	4	0	1	0	0	1	0	0	0	0	0	7	7	0	1
SOUTH DAKOTA	47	0	0	5	1	0	5	0	0	1	0	1	0	1	0	0	0	9	2	0	1
TENNESSEE	121	1	0	2	1	1	5	0	3	0	0	0	0	0	1	1	0	38	7	1	0
TEXAS	424	1	2	7	2	4	12	0	1	2	3	3	0	4	3	8	2	167	25	3	2
UTAH	184	0	0	13	3	2	17	0	2	0	0	1	0	2	2	3	0	54	9	3	1
VERMONT	14	0	0	0	0	0	1	0	0	0	0	0	0	0	0	0	0	5	0	0	0
VIRGINIA	179	0	1	0	1	3	9	0	1	0	0	0	0	0	0	10	0	78	8	2	0
WASHINGTON	5	0	0	0	0	0	5	0	0	0	0	0	0	0	0	0	0	0	0	0	0
WEST VIRGINIA	21	0	0	0	0	0	0	0	0	0	0	0	0	0	0	0	0	10	2	0	0
WISCONSIN	140	0	2	4	3	0	11	0	0	1	0	3	0	3	2	3	0	53	2	2	2
WYOMING	37	0	0	3	0	1	2	0	0	0	0	0	0	1	0	1	1	3	2	0	0
WASHINGTON D.C.	19	0	0	0	0	0	0	0	0	0	0	0	0	0	0	1	0	13	0	0	0
ARGENTINA	1	0	0	0	0	0	0	0	0	0	0	0	0	0	0	0	0	0	0	0	0
BELIZE (BRIT HONDU)	0	0	0	0	0	0	0	0	0	0	0	0	0	0	0	0	0	0	0	0	0
BOLIVIA	0	0	0	0	0	0	0	0	0	0	0	0	0	0	0	0	0	0	0	0	0

June 2009 Totals by Location Moved From, and By County Moved To

FROM / TO	TOTAL	GRAYS																			
		ADAMS	ASOTIN	BENTON	CHELAN	CLALLAM	CLARK	COLUMBIA	COWLITZ	DOUGLAS	FERRY	FRANKLIN	GARFIELD	GRANT	HARBOR	ISLAND	JEFFERSON	KING	KITSAP	KITTITAS	KLCKITAT
BRAZIL	17	0	0	0	0	0	2	0	0	0	0	0	0	0	0	0	0	13	0	0	0
CHILE	0	0	0	0	0	0	0	0	0	0	0	0	0	0	0	0	0	0	0	0	0
CANAL ZONE	0	0	0	0	0	0	0	0	0	0	0	0	0	0	0	0	0	0	0	0	0
COLUMBIA	2	0	0	0	0	0	0	0	0	0	0	0	0	0	0	0	0	1	0	0	0
COSTA RICA	0	0	0	0	0	0	0	0	0	0	0	0	0	0	0	0	0	0	0	0	0
EL SALVADOR	1	0	0	0	0	0	0	0	0	0	0	0	0	0	0	0	0	1	0	0	0
EQUADOR	1	0	0	0	0	0	0	0	0	0	0	0	0	0	0	0	0	1	0	0	0
GUYANA	0	0	0	0	0	0	0	0	0	0	0	0	0	0	0	0	0	0	0	0	0
NICARAGUA	0	0	0	0	0	0	0	0	0	0	0	0	0	0	0	0	0	0	0	0	0
PANAMA	2	0	0	0	0	0	0	0	0	0	0	0	0	0	0	0	0	2	0	0	0
PERU	3	0	0	0	0	0	0	0	0	0	0	0	0	0	0	0	0	2	0	0	0
PARAGUAY	0	0	0	0	0	0	0	0	0	0	0	0	0	0	0	0	0	0	0	0	0
SURINAM	0	0	0	0	0	0	0	0	0	0	0	0	0	0	0	0	0	0	0	0	0
TRINIDAD	0	0	0	0	0	0	0	0	0	0	0	0	0	0	0	0	0	0	0	0	0
UPPER VOLTA	0	0	0	0	0	0	0	0	0	0	0	0	0	0	0	0	0	0	0	0	0
URUGUAY	2	0	0	0	0	0	2	0	0	0	0	0	0	0	0	0	0	0	0	0	0
VENEZUELA	0	0	0	0	0	0	0	0	0	0	0	0	0	0	0	0	0	0	0	0	0
ALGERIA	0	0	0	0	0	0	0	0	0	0	0	0	0	0	0	0	0	0	0	0	0
ANGOLA	0	0	0	0	0	0	0	0	0	0	0	0	0	0	0	0	0	0	0	0	0
CAMERON	0	0	0	0	0	0	0	0	0	0	0	0	0	0	0	0	0	0	0	0	0
CHAD	0	0	0	0	0	0	0	0	0	0	0	0	0	0	0	0	0	0	0	0	0
CONGO	0	0	0	0	0	0	0	0	0	0	0	0	0	0	0	0	0	0	0	0	0
C. AFRICAN REP.	0	0	0	0	0	0	0	0	0	0	0	0	0	0	0	0	0	0	0	0	0
BOTSWANA	0	0	0	0	0	0	0	0	0	0	0	0	0	0	0	0	0	0	0	0	0
BURUNDI	0	0	0	0	0	0	0	0	0	0	0	0	0	0	0	0	0	0	0	0	0
DAHOMEY	0	0	0	0	0	0	0	0	0	0	0	0	0	0	0	0	0	0	0	0	0
EQ. GUINEA	0	0	0	0	0	0	0	0	0	0	0	0	0	0	0	0	0	0	0	0	0
EGYPT	0	0	0	0	0	0	0	0	0	0	0	0	0	0	0	0	0	0	0	0	0
ETHIOPIA	0	0	0	0	0	0	0	0	0	0	0	0	0	0	0	0	0	0	0	0	0
GABON	0	0	0	0	0	0	0	0	0	0	0	0	0	0	0	0	0	0	0	0	0
GAMBIA	0	0	0	0	0	0	0	0	0	0	0	0	0	0	0	0	0	0	0	0	0
GHANA	0	0	0	0	0	0	0	0	0	0	0	0	0	0	0	0	0	0	0	0	0
GUINEA	0	0	0	0	0	0	0	0	0	0	0	0	0	0	0	0	0	0	0	0	0
IVORY COAST	0	0	0	0	0	0	0	0	0	0	0	0	0	0	0	0	0	0	0	0	0
KENYA	1	0	0	0	0	0	0	0	0	0	0	0	0	0	0	0	0	0	0	0	0
LIBYA	1	0	0	0	0	0	0	0	0	0	0	0	0	0	0	0	0	0	0	0	0
LIBERIA	0	0	0	0	0	0	0	0	0	0	0	0	0	0	0	0	0	0	0	0	0
MALAWI	0	0	0	0	0	0	0	0	0	0	0	0	0	0	0	0	0	0	0	0	0
MALAGASY	0	0	0	0	0	0	0	0	0	0	0	0	0	0	0	0	0	0	0	0	0
MORROCCO	0	0	0	0	0	0	0	0	0	0	0	0	0	0	0	0	0	0	0	0	0
MAURITANIA	0	0	0	0	0	0	0	0	0	0	0	0	0	0	0	0	0	0	0	0	0
MALI	0	0	0	0	0	0	0	0	0	0	0	0	0	0	0	0	0	0	0	0	0
NIGER	0	0	0	0	0	0	0	0	0	0	0	0	0	0	0	0	0	0	0	0	0
NIGERIA	0	0	0	0	0	0	0	0	0	0	0	0	0	0	0	0	0	0	0	0	0
RHODESIA	0	0	0	0	0	0	0	0	0	0	0	0	0	0	0	0	0	0	0	0	0
RWANDA	0	0	0	0	0	0	0	0	0	0	0	0	0	0	0	0	0	0	0	0	0
SOUTH AFRICA	1	0	0	0	0	0	0	0	0	0	0	0	0	0	0	0	0	1	0	0	0
SOUTH WEST AFRICA	0	0	0	0	0	0	0	0	0	0	0	0	0	0	0	0	0	0	0	0	0
SIERRA LEONE	0	0	0	0	0	0	0	0	0	0	0	0	0	0	0	0	0	0	0	0	0
SWAZILAND	0	0	0	0	0	0	0	0	0	0	0	0	0	0	0	0	0	0	0	0	0
SENEGAL	0	0	0	0	0	0	0	0	0	0	0	0	0	0	0	0	0	0	0	0	0
SOMALI REPUBLIC	0	0	0	0	0	0	0	0	0	0	0	0	0	0	0	0	0	0	0	0	0
SUDAN	0	0	0	0	0	0	0	0	0	0	0	0	0	0	0	0	0	0	0	0	0
TOGO	0	0	0	0	0	0	0	0	0	0	0	0	0	0	0	0	0	0	0	0	0
TUNISIA	0	0	0	0	0	0	0	0	0	0	0	0	0	0	0	0	0	0	0	0	0
TANZANIA	0	0	0	0	0	0	0	0	0	0	0	0	0	0	0	0	0	0	0	0	0

June 2009 Totals by Location Moved From, and By County Moved To

FROM / TO	TOTAL	GRAYS																			
		ADAMS	ASOTIN	BENTON	CHELAN	CLALLAM	CLARK	COLUMBIA	COWLITZ	DOUGLAS	FERRY	FRANKLIN	GARFIELD	GRANT	HARBOR	ISLAND	JEFFERSON	KING	KITSAP	KITTITAS	KLCKITAT
UGANDA	0	0	0	0	0	0	0	0	0	0	0	0	0	0	0	0	0	0	0	0	0
ZAIRE	0	0	0	0	0	0	0	0	0	0	0	0	0	0	0	0	0	0	0	0	0
AFGHANISTAN	0	0	0	0	0	0	0	0	0	0	0	0	0	0	0	0	0	0	0	0	0
BANGLADESH	0	0	0	0	0	0	0	0	0	0	0	0	0	0	0	0	0	0	0	0	0
BHUTAN	0	0	0	0	0	0	0	0	0	0	0	0	0	0	0	0	0	0	0	0	0
BURMA	0	0	0	0	0	0	0	0	0	0	0	0	0	0	0	0	0	0	0	0	0
BAHRAIN	2	0	0	0	0	0	0	0	0	0	0	0	0	0	0	0	0	2	0	0	0
CEYLON (SRI LANKA)	0	0	0	0	0	0	0	0	0	0	0	0	0	0	0	0	0	0	0	0	0
CHINA	7	0	0	0	0	0	0	0	0	0	0	0	0	0	0	0	0	6	0	0	0
CAMBODIA	0	0	0	0	0	0	0	0	0	0	0	0	0	0	0	0	0	0	0	0	0
CYPRUS	0	0	0	0	0	0	0	0	0	0	0	0	0	0	0	0	0	0	0	0	0
JORDAN	0	0	0	0	0	0	0	0	0	0	0	0	0	0	0	0	0	0	0	0	0
JAPAN	9	0	0	0	0	0	0	0	0	0	0	0	0	0	0	0	0	5	0	0	0
KUWAIT	0	0	0	0	0	0	0	0	0	0	0	0	0	0	0	0	0	0	0	0	0
IRAN	0	0	0	0	0	0	0	0	0	0	0	0	0	0	0	0	0	0	0	0	0
ISRAEL	0	0	0	0	0	0	0	0	0	0	0	0	0	0	0	0	0	0	0	0	0
INDIA	20	0	0	0	0	0	0	0	0	0	0	0	0	0	0	0	0	19	0	0	0
IRAQ	0	0	0	0	0	0	0	0	0	0	0	0	0	0	0	0	0	0	0	0	0
INDONESIA	2	0	0	0	0	0	0	0	0	1	0	0	0	0	0	0	0	0	0	0	0
KOREA	15	0	0	0	0	0	0	0	0	0	0	0	0	0	0	0	0	8	0	0	0
LAOS	0	0	0	0	0	0	0	0	0	0	0	0	0	0	0	0	0	0	0	0	0
LEBANON	0	0	0	0	0	0	0	0	0	0	0	0	0	0	0	0	0	0	0	0	0
MALAYSIA	0	0	0	0	0	0	0	0	0	0	0	0	0	0	0	0	0	0	0	0	0
MONGOLIA	1	0	0	0	0	0	0	0	0	0	0	0	0	0	0	0	0	0	0	0	0
NEPAL	0	0	0	0	0	0	0	0	0	0	0	0	0	0	0	0	0	0	0	0	0
OMAN	0	0	0	0	0	0	0	0	0	0	0	0	0	0	0	0	0	0	0	0	0
PAKISTAN	0	0	0	0	0	0	0	0	0	0	0	0	0	0	0	0	0	0	0	0	0
QATAR	0	0	0	0	0	0	0	0	0	0	0	0	0	0	0	0	0	0	0	0	0
SIKKIM	0	0	0	0	0	0	0	0	0	0	0	0	0	0	0	0	0	0	0	0	0
SYRIA	0	0	0	0	0	0	0	0	0	0	0	0	0	0	0	0	0	0	0	0	0
SAUDI ARABIA	2	0	0	0	0	0	0	0	0	0	0	0	0	0	0	0	0	2	0	0	0
SINGAPORE	1	0	0	0	0	0	0	0	0	0	0	0	0	0	0	0	0	1	0	0	0
TAIWAN	1	0	0	0	0	0	0	0	0	0	0	0	0	0	0	0	0	1	0	0	0
THAILAND	0	0	0	0	0	0	0	0	0	0	0	0	0	0	0	0	0	0	0	0	0
TURKEY	4	0	0	0	0	0	0	0	0	0	0	0	0	0	0	0	0	4	0	0	0
USSR	4	0	0	0	0	0	3	0	0	0	0	0	0	0	0	0	0	1	0	0	0
UNITED ARAB EMIRATE	0	0	0	0	0	0	0	0	0	0	0	0	0	0	0	0	0	0	0	0	0
VIETNAM	1	0	0	0	0	0	1	0	0	0	0	0	0	0	0	0	0	0	0	0	0
YEMEN	0	0	0	0	0	0	0	0	0	0	0	0	0	0	0	0	0	0	0	0	0
AUSTRIA	0	0	0	0	0	0	0	0	0	0	0	0	0	0	0	0	0	0	0	0	0
BULGARIA	0	0	0	0	0	0	0	0	0	0	0	0	0	0	0	0	0	0	0	0	0
BELGIUM	0	0	0	0	0	0	0	0	0	0	0	0	0	0	0	0	0	0	0	0	0
DENMARK	0	0	0	0	0	0	0	0	0	0	0	0	0	0	0	0	0	0	0	0	0
ENGLAND	7	0	0	0	0	0	0	0	0	0	0	0	0	0	0	0	0	7	0	0	0
FRANCE	1	0	0	0	0	0	0	0	0	0	0	0	0	0	0	0	0	1	0	0	0
FINLAND	0	0	0	0	0	0	0	0	0	0	0	0	0	0	0	0	0	0	0	0	0
CZECHOSLAVAKIA	0	0	0	0	0	0	0	0	0	0	0	0	0	0	0	0	0	0	0	0	0
GREECE	0	0	0	0	0	0	0	0	0	0	0	0	0	0	0	0	0	0	0	0	0
GERMANY	9	0	0	0	0	0	1	0	0	0	0	0	0	0	0	0	0	6	0	0	0
IRELAND	0	0	0	0	0	0	0	0	0	0	0	0	0	0	0	0	0	0	0	0	0
ITALY	0	0	0	0	0	0	0	0	0	0	0	0	0	0	0	0	0	0	0	0	0
HUNGARY	1	0	0	0	0	0	0	0	0	0	0	0	0	0	0	0	0	1	0	0	0
LUXEMBOURG	0	0	0	0	0	0	0	0	0	0	0	0	0	0	0	0	0	0	0	0	0
NETHERLANDS	1	0	0	0	0	0	0	0	0	0	0	0	0	0	1	0	0	0	0	0	0
NORWAY	0	0	0	0	0	0	0	0	0	0	0	0	0	0	0	0	0	0	0	0	0
POLAND	2	0	0	0	0	0	0	0	0	0	0	0	0	0	0	0	0	2	0	0	0

June 2009 Totals by Location Moved From, and By County Moved To

FROM / TO	TOTAL	GRAYS																			
		ADAMS	ASOTIN	BENTON	CHELAN	CLALLAM	CLARK	COLUMBIA	COWLITZ	DOUGLAS	FERRY	FRANKLIN	GARFIELD	GRANT	HARBOR	ISLAND	JEFFERSON	KING	KITSAP	KITTITAS	KLCKITAT
SPAIN	0	0	0	0	0	0	0	0	0	0	0	0	0	0	0	0	0	0	0	0	0
SWITZERLAND	0	0	0	0	0	0	0	0	0	0	0	0	0	0	0	0	0	0	0	0	0
SWEDEN	0	0	0	0	0	0	0	0	0	0	0	0	0	0	0	0	0	0	0	0	0
ROMANIA	1	0	0	0	0	0	0	0	0	0	0	0	0	0	0	0	0	1	0	0	0
YUGOSLAVIA	0	0	0	0	0	0	0	0	0	0	0	0	0	0	0	0	0	0	0	0	0
ALBANIA	0	0	0	0	0	0	0	0	0	0	0	0	0	0	0	0	0	0	0	0	0
ANDORRA	0	0	0	0	0	0	0	0	0	0	0	0	0	0	0	0	0	0	0	0	0
AMERICAN SAMOA	12	0	0	0	0	0	0	0	0	0	0	0	0	0	0	0	0	6	0	0	0
BORNEO	0	0	0	0	0	0	0	0	0	0	0	0	0	0	0	0	0	0	0	0	0
CUBA	0	0	0	0	0	0	0	0	0	0	0	0	0	0	0	0	0	0	0	0	0
BERMUDA	0	0	0	0	0	0	0	0	0	0	0	0	0	0	0	0	0	0	0	0	0
DOMINICAN REPUBLIC	1	0	0	0	0	0	0	0	0	0	0	0	0	0	0	0	0	1	0	0	0
FIJI	2	0	0	0	0	0	0	0	0	0	0	0	0	0	0	0	0	0	0	0	0
GUAM	30	0	0	0	0	0	1	0	0	0	0	0	0	0	2	0	10	8	0	0	0
HAITI	0	0	0	0	0	0	0	0	0	0	0	0	0	0	0	0	0	0	0	0	0
JAMAICA	0	0	0	0	0	0	0	0	0	0	0	0	0	0	0	0	0	0	0	0	0
NEW ZEALAND	0	0	0	0	0	0	0	0	0	0	0	0	0	0	0	0	0	0	0	0	0
PORTUGAL	1	0	0	0	0	0	0	0	0	0	0	0	0	0	0	0	0	1	0	0	0
PHILIPPINES	7	0	0	0	0	0	0	0	0	0	0	0	0	0	0	0	5	1	0	0	0
PUERTO RICO	12	0	0	0	0	0	0	0	0	0	0	0	0	0	1	0	0	3	0	0	0
TAHITI	0	0	0	0	0	0	0	0	0	0	0	0	0	0	0	0	0	0	0	0	0
TONGA	0	0	0	0	0	0	0	0	0	0	0	0	0	0	0	0	0	0	0	0	0
VIRGIN ISLANDS	0	0	0	0	0	0	0	0	0	0	0	0	0	0	0	0	0	0	0	0	0
WEST SAMOA	0	0	0	0	0	0	0	0	0	0	0	0	0	0	0	0	0	0	0	0	0
AUSTRALIA	4	0	0	0	0	0	0	0	0	0	0	0	0	0	0	0	4	0	0	0	0
ANTARTICA	0	0	0	0	0	0	0	0	0	0	0	0	0	0	0	0	0	0	0	0	0
ICELAND	0	0	0	0	0	0	0	0	0	0	0	0	0	0	0	0	0	0	0	0	0
GREENLAND	0	0	0	0	0	0	0	0	0	0	0	0	0	0	0	0	0	0	0	0	0
MEXICO	87	0	0	4	5	0	7	0	2	6	0	5	0	1	2	0	16	1	0	0	0
ALBERTA	8	0	0	0	0	0	0	0	0	0	1	0	0	0	0	0	7	0	0	0	0
BRITISH COLUMBIA	71	0	0	0	0	3	1	0	0	1	0	1	0	0	1	0	44	0	0	0	0
MANITOBA	0	0	0	0	0	0	0	0	0	0	0	0	0	0	0	0	0	0	0	0	0
NEW BRUNSWICK	0	0	0	0	0	0	0	0	0	0	0	0	0	0	0	0	0	0	0	0	0
NEWFOUNDLAND	0	0	0	0	0	0	0	0	0	0	0	0	0	0	0	0	0	0	0	0	0
NOVA SCOTIA	2	0	0	0	0	0	0	0	0	0	0	0	0	0	0	0	1	0	0	0	0
ONTARIO	18	0	0	1	0	0	0	0	0	1	0	0	0	0	0	0	12	0	0	0	0
PRINCE EDWARD IS.	0	0	0	0	0	0	0	0	0	0	0	0	0	0	0	0	0	0	0	0	0
QUEBEC	1	0	0	0	0	0	0	0	0	0	0	0	0	0	0	0	0	0	0	0	0
SASKATCHEWAN	0	0	0	0	0	0	0	0	0	0	0	0	0	0	0	0	0	0	0	0	0
NORTHWEST TERRITORY	0	0	0	0	0	0	0	0	0	0	0	0	0	0	0	0	0	0	0	0	0
YUKON TERRITORY	1	0	0	0	0	0	0	0	0	0	0	0	0	0	0	0	1	0	0	0	0
UNKNOWN	41	3	0	0	0	0	5	0	2	1	0	0	0	0	0	0	18	1	0	0	0
** TOTAL **	9658	16	52	255	80	113	957	7	136	40	11	109	1	107	58	156	50	3290	415	42	45

June 2009 Totals by Location Moved From, and By County Moved To

FROM / TO	PENDING																SAND				WALLA				
	LEWIS	LINCOLN	MASON	OKANAGON	PACIFIC	OREILLE	PIERCE	JUAN	SKAGIT	SKAMANIA	SNOHOMISH	SPOKANE	STEVENS	THURSTON	WAHIAKUM	WALLA	WHATCOM	WHITMAN	YAKIMA	UNKNOWN					
ALABAMA	1	0	1	0	0	1	13	0	1	0	4	2	0	3	0	0	1	0	0	0					
ALASKA	3	1	4	1	0	1	21	1	4	0	7	14	2	10	0	1	10	0	8	0					
ARIZONA	4	0	3	3	2	0	42	1	8	0	44	29	2	14	0	4	17	2	3	0					
ARKANSAS	0	0	0	0	0	0	5	2	0	1	3	3	0	3	0	1	2	0	2	0					
CALIFORNIA	14	0	10	3	9	4	159	3	23	4	148	102	11	69	2	8	74	4	43	0					
COLORADO	1	0	0	2	0	1	27	1	1	0	16	17	2	9	0	4	10	1	2	0					
CONNECTICUT	0	0	0	1	0	0	1	0	0	0	4	2	1	1	0	0	2	0	0	0					
DELAWARE	0	0	0	0	0	0	1	0	0	0	0	1	0	0	1	0	0	0	0	0					
FLORIDA	3	1	1	2	0	2	47	0	1	1	33	16	3	24	0	0	9	0	6	0					
GEORGIA	2	0	0	0	1	0	25	0	1	0	10	3	1	9	0	1	3	0	1	0					
HAWAII	0	0	0	1	0	0	26	0	0	0	9	2	0	11	0	0	6	3	1	0					
IDAHO	5	0	5	5	1	3	18	0	5	1	14	76	5	7	0	3	9	13	11	0					
ILLINOIS	0	0	2	0	0	0	26	0	3	0	15	4	0	3	0	0	3	1	4	1					
INDIANA	3	0	0	1	0	0	12	0	1	0	3	5	0	4	0	0	7	1	5	0					
IOWA	1	0	0	0	0	0	4	0	0	0	1	7	2	3	0	0	3	0	3	0					
KANSAS	2	0	0	0	0	0	9	0	0	0	13	3	1	3	0	0	5	1	0	1					
KENTUCKY	0	0	0	1	1	0	7	0	0	0	2	1	0	2	0	1	0	0	3	0					
LOUISIANA	0	0	0	0	0	0	11	0	0	0	7	3	0	3	0	0	1	0	1	0					
MAINE	1	0	0	0	0	0	4	0	2	0	1	1	0	1	0	0	0	0	3	0					
MARYLAND	0	0	1	0	0	0	11	0	0	0	5	1	0	4	0	1	2	0	0	0					
MASSACHUSETTS	0	0	0	0	0	0	10	0	1	0	6	1	0	1	0	0	4	0	1	0					
MICHIGAN	5	0	0	2	0	0	24	0	2	0	18	11	0	8	0	1	4	0	7	0					
MINNESOTA	3	0	0	1	0	0	10	3	0	0	10	9	1	1	0	0	6	1	0	0					
MISSISSIPPI	0	0	0	0	0	0	3	0	0	0	3	1	0	1	0	2	3	0	1	0					
MISSOURI	0	1	2	1	4	0	13	0	2	0	10	6	0	5	0	0	3	3	2	0					
MONTANA	0	0	2	0	2	0	12	0	2	0	17	25	2	7	0	2	9	0	8	0					
NEBRASKA	0	0	2	0	0	0	8	0	0	1	6	1	0	5	0	1	2	1	0	0					
NEVADA	3	0	3	1	0	0	40	0	4	0	23	24	0	9	0	1	9	0	7	0					
NEW HAMPSHIRE	0	0	0	0	0	0	4	0	0	0	4	0	0	1	0	0	1	0	0	0					
NEW JERSEY	1	0	1	0	0	0	10	1	1	0	7	2	0	0	0	1	2	0	0	0					
NEW MEXICO	0	0	2	1	0	0	7	0	4	0	6	7	0	3	0	0	4	2	0	0					
NEW YORK	0	0	1	1	0	0	14	0	1	1	10	1	0	4	0	0	0	1	0	0					
NORTH CAROLINA	3	0	0	0	2	0	36	0	5	0	23	4	1	16	0	3	6	1	17	0					
NORTH DAKOTA	0	0	1	2	0	0	5	0	1	0	2	6	0	1	1	0	0	0	0	0					
OHIO	0	0	0	0	0	0	28	2	3	0	12	8	1	2	0	0	5	3	1	0					
OKLAHOMA	0	0	0	0	0	0	19	0	0	0	3	2	0	3	0	1	4	0	2	0					
OREGON	23	0	9	5	18	1	84	1	23	12	60	40	8	34	0	21	25	6	51	1					
PENNSYLVANIA	1	0	1	2	0	1	23	0	3	0	13	3	1	4	0	0	1	1	0	0					
RHODE ISLAND	0	0	0	0	1	0	2	0	0	0	0	0	0	0	0	0	0	0	0	0					
SOUTH CAROLINA	0	0	1	0	2	0	11	0	0	0	2	2	0	1	0	0	4	0	0	0					
SOUTH DAKOTA	0	0	2	1	0	0	7	0	0	0	0	6	0	1	0	0	1	3	0	0					
TENNESSEE	1	0	0	1	0	0	11	0	2	0	11	5	1	14	0	1	6	1	6	0					
TEXAS	2	2	7	0	3	0	58	0	6	0	38	16	2	19	0	0	7	0	12	1					
UTAH	1	0	2	1	0	0	14	0	0	0	16	15	0	9	0	0	9	3	2	0					
VERMONT	0	0	0	0	0	0	5	0	1	0	0	0	0	1	0	0	1	0	0	0					
VIRGINIA	2	0	0	2	0	1	26	0	2	0	15	5	1	10	0	1	0	1	0	0					
WASHINGTON	0	0	0	0	0	0	0	0	0	0	0	0	0	0	0	0	0	0	0	0					
WEST VIRGINIA	0	0	0	0	0	0	3	0	0	0	2	0	0	2	0	0	2	0	0	0					
WISCONSIN	3	0	0	1	0	0	14	0	1	0	8	13	0	3	0	0	3	1	2	0					
WYOMING	4	0	0	0	0	0	3	0	1	1	4	5	0	2	0	1	1	0	1	0					
WASHINGTON D.C.	0	0	0	0	0	0	3	0	0	0	0	0	0	2	0	0	0	0	0	0					
ARGENTINA	0	0	0	0	0	0	0	0	0	0	0	0	0	0	0	0	0	1	0	0					
BELIZE (BRIT HONDU)	0	0	0	0	0	0	0	0	0	0	0	0	0	0	0	0	0	0	0	0					
BOLIVIA	0	0	0	0	0	0	0	0	0	0	0	0	0	0	0	0	0	0	0	0					

June 2009 Totals by Location Moved From, and By County Moved To

FROM / TO	LEWIS	LINCOLN	MASON	OKANAGON	PACIFIC	PEND OREILLE	PIERCE	SAN JUAN	SKAGIT	SKAMANIA	SNOHOMISH	SPOKANE	STEVENS	THURSTON	WAHKIAKUM	WALLA WALLA	WHATCOM	WHITMAN	YAKIMA	UNKNOWN
BRAZIL	0	0	0	0	0	0	0	0	0	0	2	0	0	0	0	0	0	0	0	0
CHILE	0	0	0	0	0	0	0	0	0	0	0	0	0	0	0	0	0	0	0	0
CANAL ZONE	0	0	0	0	0	0	0	0	0	0	0	0	0	0	0	0	0	0	0	0
COLUMBIA	0	0	0	0	0	0	1	0	0	0	0	0	0	0	0	0	0	0	0	0
COSTA RICA	0	0	0	0	0	0	0	0	0	0	0	0	0	0	0	0	0	0	0	0
EL SALVADOR	0	0	0	0	0	0	0	0	0	0	0	0	0	0	0	0	0	0	0	0
EQUADOR	0	0	0	0	0	0	0	0	0	0	0	0	0	0	0	0	0	0	0	0
GUYANA	0	0	0	0	0	0	0	0	0	0	0	0	0	0	0	0	0	0	0	0
NICARAGUA	0	0	0	0	0	0	0	0	0	0	0	0	0	0	0	0	0	0	0	0
PANAMA	0	0	0	0	0	0	0	0	0	0	0	0	0	0	0	0	0	0	0	0
PERU	0	0	0	0	0	0	0	0	0	0	0	0	0	1	0	0	0	0	0	0
PARAGUAY	0	0	0	0	0	0	0	0	0	0	0	0	0	0	0	0	0	0	0	0
SURINAM	0	0	0	0	0	0	0	0	0	0	0	0	0	0	0	0	0	0	0	0
TRINIDAD	0	0	0	0	0	0	0	0	0	0	0	0	0	0	0	0	0	0	0	0
UPPER VOLTA	0	0	0	0	0	0	0	0	0	0	0	0	0	0	0	0	0	0	0	0
URUGUAY	0	0	0	0	0	0	0	0	0	0	0	0	0	0	0	0	0	0	0	0
VENEZUELA	0	0	0	0	0	0	0	0	0	0	0	0	0	0	0	0	0	0	0	0
ALGERIA	0	0	0	0	0	0	0	0	0	0	0	0	0	0	0	0	0	0	0	0
ANGOLA	0	0	0	0	0	0	0	0	0	0	0	0	0	0	0	0	0	0	0	0
CAMERON	0	0	0	0	0	0	0	0	0	0	0	0	0	0	0	0	0	0	0	0
CHAD	0	0	0	0	0	0	0	0	0	0	0	0	0	0	0	0	0	0	0	0
CONGO	0	0	0	0	0	0	0	0	0	0	0	0	0	0	0	0	0	0	0	0
C. AFRICAN REP.	0	0	0	0	0	0	0	0	0	0	0	0	0	0	0	0	0	0	0	0
BOTSWANA	0	0	0	0	0	0	0	0	0	0	0	0	0	0	0	0	0	0	0	0
BURUNDI	0	0	0	0	0	0	0	0	0	0	0	0	0	0	0	0	0	0	0	0
DAHOMEY	0	0	0	0	0	0	0	0	0	0	0	0	0	0	0	0	0	0	0	0
EQ. GUINEA	0	0	0	0	0	0	0	0	0	0	0	0	0	0	0	0	0	0	0	0
EGYPT	0	0	0	0	0	0	0	0	0	0	0	0	0	0	0	0	0	0	0	0
ETHIOPIA	0	0	0	0	0	0	0	0	0	0	0	0	0	0	0	0	0	0	0	0
GABON	0	0	0	0	0	0	0	0	0	0	0	0	0	0	0	0	0	0	0	0
GAMBIA	0	0	0	0	0	0	0	0	0	0	0	0	0	0	0	0	0	0	0	0
GHANA	0	0	0	0	0	0	0	0	0	0	0	0	0	0	0	0	0	0	0	0
GUINEA	0	0	0	0	0	0	0	0	0	0	0	0	0	0	0	0	0	0	0	0
IVORY COAST	0	0	0	0	0	0	0	0	0	0	0	0	0	0	0	0	0	0	0	0
KENYA	0	0	0	0	0	0	0	0	0	0	0	0	0	0	0	0	0	1	0	0
LIBYA	0	0	0	0	0	0	0	0	0	0	0	0	0	0	0	0	0	1	0	0
LIBERIA	0	0	0	0	0	0	0	0	0	0	0	0	0	0	0	0	0	0	0	0
MALAWI	0	0	0	0	0	0	0	0	0	0	0	0	0	0	0	0	0	0	0	0
MALAGASY	0	0	0	0	0	0	0	0	0	0	0	0	0	0	0	0	0	0	0	0
MORROCCO	0	0	0	0	0	0	0	0	0	0	0	0	0	0	0	0	0	0	0	0
MAURITANIA	0	0	0	0	0	0	0	0	0	0	0	0	0	0	0	0	0	0	0	0
MALI	0	0	0	0	0	0	0	0	0	0	0	0	0	0	0	0	0	0	0	0
NIGER	0	0	0	0	0	0	0	0	0	0	0	0	0	0	0	0	0	0	0	0
NIGERIA	0	0	0	0	0	0	0	0	0	0	0	0	0	0	0	0	0	0	0	0
RHODESIA	0	0	0	0	0	0	0	0	0	0	0	0	0	0	0	0	0	0	0	0
RWANDA	0	0	0	0	0	0	0	0	0	0	0	0	0	0	0	0	0	0	0	0
SOUTH AFRICA	0	0	0	0	0	0	0	0	0	0	0	0	0	0	0	0	0	0	0	0
SOUTH WEST AFRICA	0	0	0	0	0	0	0	0	0	0	0	0	0	0	0	0	0	0	0	0
SIERRA LEONE	0	0	0	0	0	0	0	0	0	0	0	0	0	0	0	0	0	0	0	0
SWAZILAND	0	0	0	0	0	0	0	0	0	0	0	0	0	0	0	0	0	0	0	0
SENEGAL	0	0	0	0	0	0	0	0	0	0	0	0	0	0	0	0	0	0	0	0
SOMALI REPUBLIC	0	0	0	0	0	0	0	0	0	0	0	0	0	0	0	0	0	0	0	0
SUDAN	0	0	0	0	0	0	0	0	0	0	0	0	0	0	0	0	0	0	0	0
TOGO	0	0	0	0	0	0	0	0	0	0	0	0	0	0	0	0	0	0	0	0
TUNISIA	0	0	0	0	0	0	0	0	0	0	0	0	0	0	0	0	0	0	0	0
TANZANIA	0	0	0	0	0	0	0	0	0	0	0	0	0	0	0	0	0	0	0	0

June 2009 Totals by Location Moved From, and By County Moved To

FROM / TO	LEWIS	LINCOLN	MASON	OKANAGON	PACIFIC	PEND OREILLE	PIERCE	SAN JUAN	SKAGIT	SKAMANIA	SNOHOMISH	SPOKANE	STEVENS	THURSTON	WAHKIAKUM	WALLA WALLA	WHATCOM	WHITMAN	YAKIMA	UNKNOWN
UGANDA	0	0	0	0	0	0	0	0	0	0	0	0	0	0	0	0	0	0	0	0
ZAIRE	0	0	0	0	0	0	0	0	0	0	0	0	0	0	0	0	0	0	0	0
AFGHANISTAN	0	0	0	0	0	0	0	0	0	0	0	0	0	0	0	0	0	0	0	0
BANGLADESH	0	0	0	0	0	0	0	0	0	0	0	0	0	0	0	0	0	0	0	0
BHUTAN	0	0	0	0	0	0	0	0	0	0	0	0	0	0	0	0	0	0	0	0
BURMA	0	0	0	0	0	0	0	0	0	0	0	0	0	0	0	0	0	0	0	0
BAHRAIN	0	0	0	0	0	0	0	0	0	0	0	0	0	0	0	0	0	0	0	0
CEYLON (SRI LANKA)	0	0	0	0	0	0	0	0	0	0	0	0	0	0	0	0	0	0	0	0
CHINA	0	0	0	0	0	0	0	0	0	0	0	0	0	0	0	0	0	1	0	0
CAMBODIA	0	0	0	0	0	0	0	0	0	0	0	0	0	0	0	0	0	0	0	0
CYPRUS	0	0	0	0	0	0	0	0	0	0	0	0	0	0	0	0	0	0	0	0
JORDAN	0	0	0	0	0	0	0	0	0	0	0	0	0	0	0	0	0	0	0	0
JAPAN	0	0	0	0	0	0	0	0	0	0	2	0	0	0	0	0	0	2	0	0
KUWAIT	0	0	0	0	0	0	0	0	0	0	0	0	0	0	0	0	0	0	0	0
IRAN	0	0	0	0	0	0	0	0	0	0	0	0	0	0	0	0	0	0	0	0
ISRAEL	0	0	0	0	0	0	0	0	0	0	0	0	0	0	0	0	0	0	0	0
INDIA	0	0	0	0	0	0	1	0	0	0	0	0	0	0	0	0	0	0	0	0
IRAQ	0	0	0	0	0	0	0	0	0	0	0	0	0	0	0	0	0	0	0	0
INDONESIA	0	0	0	0	0	0	0	0	0	0	1	0	0	0	0	0	0	0	0	0
KOREA	0	0	0	0	0	0	3	0	0	0	3	0	0	0	0	0	0	1	0	0
LAOS	0	0	0	0	0	0	0	0	0	0	0	0	0	0	0	0	0	0	0	0
LEBANON	0	0	0	0	0	0	0	0	0	0	0	0	0	0	0	0	0	0	0	0
MALAYSIA	0	0	0	0	0	0	0	0	0	0	0	0	0	0	0	0	0	0	0	0
MONGOLIA	0	0	0	0	0	0	0	0	0	0	1	0	0	0	0	0	0	0	0	0
NEPAL	0	0	0	0	0	0	0	0	0	0	0	0	0	0	0	0	0	0	0	0
OMAN	0	0	0	0	0	0	0	0	0	0	0	0	0	0	0	0	0	0	0	0
PAKISTAN	0	0	0	0	0	0	0	0	0	0	0	0	0	0	0	0	0	0	0	0
QATAR	0	0	0	0	0	0	0	0	0	0	0	0	0	0	0	0	0	0	0	0
SIKKIM	0	0	0	0	0	0	0	0	0	0	0	0	0	0	0	0	0	0	0	0
SYRIA	0	0	0	0	0	0	0	0	0	0	0	0	0	0	0	0	0	0	0	0
SAUDI ARABIA	0	0	0	0	0	0	0	0	0	0	0	0	0	0	0	0	0	0	0	0
SINGAPORE	0	0	0	0	0	0	0	0	0	0	0	0	0	0	0	0	0	0	0	0
TAIWAN	0	0	0	0	0	0	0	0	0	0	0	0	0	0	0	0	0	0	0	0
THAILAND	0	0	0	0	0	0	0	0	0	0	0	0	0	0	0	0	0	0	0	0
TURKEY	0	0	0	0	0	0	0	0	0	0	0	0	0	0	0	0	0	0	0	0
USSR	0	0	0	0	0	0	0	0	0	0	0	0	0	0	0	0	0	0	0	0
UNITED ARAB EMIRATE	0	0	0	0	0	0	0	0	0	0	0	0	0	0	0	0	0	0	0	0
VIETNAM	0	0	0	0	0	0	0	0	0	0	0	0	0	0	0	0	0	0	0	0
YEMEN	0	0	0	0	0	0	0	0	0	0	0	0	0	0	0	0	0	0	0	0
AUSTRIA	0	0	0	0	0	0	0	0	0	0	0	0	0	0	0	0	0	0	0	0
BULGARIA	0	0	0	0	0	0	0	0	0	0	0	0	0	0	0	0	0	0	0	0
BELGIUM	0	0	0	0	0	0	0	0	0	0	0	0	0	0	0	0	0	0	0	0
DENMARK	0	0	0	0	0	0	0	0	0	0	0	0	0	0	0	0	0	0	0	0
ENGLAND	0	0	0	0	0	0	0	0	0	0	0	0	0	0	0	0	0	0	0	0
FRANCE	0	0	0	0	0	0	0	0	0	0	0	0	0	0	0	0	0	0	0	0
FINLAND	0	0	0	0	0	0	0	0	0	0	0	0	0	0	0	0	0	0	0	0
CZECHOSLAVAKIA	0	0	0	0	0	0	0	0	0	0	0	0	0	0	0	0	0	0	0	0
GREECE	0	0	0	0	0	0	0	0	0	0	0	0	0	0	0	0	0	0	0	0
GERMANY	0	0	0	0	0	0	0	0	0	0	0	0	0	2	0	0	0	0	0	0
IRELAND	0	0	0	0	0	0	0	0	0	0	0	0	0	0	0	0	0	0	0	0
ITALY	0	0	0	0	0	0	0	0	0	0	0	0	0	0	0	0	0	0	0	0
HUNGARY	0	0	0	0	0	0	0	0	0	0	0	0	0	0	0	0	0	0	0	0
LUXEMBOURG	0	0	0	0	0	0	0	0	0	0	0	0	0	0	0	0	0	0	0	0
NETHERLANDS	0	0	0	0	0	0	0	0	0	0	0	0	0	0	0	0	0	0	0	0
NORWAY	0	0	0	0	0	0	0	0	0	0	0	0	0	0	0	0	0	0	0	0
POLAND	0	0	0	0	0	0	0	0	0	0	0	0	0	0	0	0	0	0	0	0

June 2009 Totals by Location Moved From, and By County Moved To

FROM / TO	LEWIS	LINCOLN	MASON	OKANAGON	PACIFIC	PEND OREILLE	PIERCE	SAN JUAN	SKAGIT	SKAMANIA	SNOHOMISH	SPOKANE	STEVENS	THURSTON	WAHKIAKUM	WALLA WALLA	WHATCOM	WHITMAN	YAKIMA	UNKNOWN
SPAIN	0	0	0	0	0	0	0	0	0	0	0	0	0	0	0	0	0	0	0	0
SWITZERLAND	0	0	0	0	0	0	0	0	0	0	0	0	0	0	0	0	0	0	0	0
SWEDEN	0	0	0	0	0	0	0	0	0	0	0	0	0	0	0	0	0	0	0	0
ROMANIA	0	0	0	0	0	0	0	0	0	0	0	0	0	0	0	0	0	0	0	0
YUGOSLAVIA	0	0	0	0	0	0	0	0	0	0	0	0	0	0	0	0	0	0	0	0
ALBANIA	0	0	0	0	0	0	0	0	0	0	0	0	0	0	0	0	0	0	0	0
ANDORRA	0	0	0	0	0	0	0	0	0	0	0	0	0	0	0	0	0	0	0	0
AMERICAN SAMOA	0	0	0	0	0	0	5	0	0	0	0	0	1	0	0	0	0	0	0	0
BORNEO	0	0	0	0	0	0	0	0	0	0	0	0	0	0	0	0	0	0	0	0
CUBA	0	0	0	0	0	0	0	0	0	0	0	0	0	0	0	0	0	0	0	0
BERMUDA	0	0	0	0	0	0	0	0	0	0	0	0	0	0	0	0	0	0	0	0
DOMINICAN REPUBLIC	0	0	0	0	0	0	0	0	0	0	0	0	0	0	0	0	0	0	0	0
FIJI	0	0	0	0	0	0	1	0	0	0	1	0	0	0	0	0	0	0	0	0
GUAM	0	0	0	0	0	0	4	0	0	0	4	1	0	0	0	0	0	0	0	0
HAITI	0	0	0	0	0	0	0	0	0	0	0	0	0	0	0	0	0	0	0	0
JAMAICA	0	0	0	0	0	0	0	0	0	0	0	0	0	0	0	0	0	0	0	0
NEW ZEALAND	0	0	0	0	0	0	0	0	0	0	0	0	0	0	0	0	0	0	0	0
PORTUGAL	0	0	0	0	0	0	0	0	0	0	0	0	0	0	0	0	0	0	0	0
PHILIPPINES	0	0	0	0	0	0	1	0	0	0	0	0	0	0	0	0	0	0	0	0
PUERTO RICO	0	0	0	0	0	0	7	0	0	0	1	0	0	0	0	0	0	0	0	0
TAHITI	0	0	0	0	0	0	0	0	0	0	0	0	0	0	0	0	0	0	0	0
TONGA	0	0	0	0	0	0	0	0	0	0	0	0	0	0	0	0	0	0	0	0
VIRGIN ISLANDS	0	0	0	0	0	0	0	0	0	0	0	0	0	0	0	0	0	0	0	0
WEST SAMOA	0	0	0	0	0	0	0	0	0	0	0	0	0	0	0	0	0	0	0	0
AUSTRALIA	0	0	0	0	0	0	0	0	0	0	0	0	0	0	0	0	0	0	0	0
ANTARTICA	0	0	0	0	0	0	0	0	0	0	0	0	0	0	0	0	0	0	0	0
ICELAND	0	0	0	0	0	0	0	0	0	0	0	0	0	0	0	0	0	0	0	0
GREENLAND	0	0	0	0	0	0	0	0	0	0	0	0	0	0	0	0	0	0	0	0
MEXICO	0	0	1	1	1	0	8	0	0	0	5	3	0	4	0	6	0	1	8	0
ALBERTA	0	0	0	0	0	0	0	0	0	0	0	0	0	0	0	0	0	0	0	0
BRITISH COLUMBIA	0	0	0	0	0	0	3	0	1	0	4	1	0	2	0	0	9	0	0	0
MANITOBA	0	0	0	0	0	0	0	0	0	0	0	0	0	0	0	0	0	0	0	0
NEW BRUNSWICK	0	0	0	0	0	0	0	0	0	0	0	0	0	0	0	0	0	0	0	0
NEWFOUNDLAND	0	0	0	0	0	0	0	0	0	0	0	0	0	0	0	0	0	0	0	0
NOVA SCOTIA	0	0	0	0	0	0	0	0	0	0	0	0	0	0	0	0	1	0	0	0
ONTARIO	0	0	0	0	0	0	2	0	0	0	1	0	0	0	0	0	0	1	0	0
PRINCE EDWARD IS.	0	0	0	0	0	0	0	0	0	0	0	0	0	0	0	0	0	0	0	0
QUEBEC	0	0	0	0	0	0	0	0	0	0	0	0	0	1	0	0	0	0	0	0
SASKATCHEWAN	0	0	0	0	0	0	0	0	0	0	0	0	0	0	0	0	0	0	0	0
NORTHWEST TERRITORY	0	0	0	0	0	0	0	0	0	0	0	0	0	0	0	0	0	0	0	0
YUKON TERRITORY	0	0	0	0	0	0	0	0	0	0	0	0	0	0	0	0	0	0	0	0
UNKNOWN	0	0	0	0	0	0	3	0	0	0	5	1	1	1	0	0	0	0	0	0
** TOTAL **	92	5	64	43	47	15	1015	15	116	22	698	516	50	363	3	67	296	63	224	4