



STATE OF WASHINGTON  
DEPARTMENT OF LICENSING  
PO Box 9035 • Olympia, Washington 98507-9035

June 5, 2008

**Washington State Drivers Report for May 2008**

The monthly report for May 2008 tabulates Washington drivers' license (WDL) activity. The table below summarizes WDL migration in and out of Washington State. It also identifies the top three in-migration states. This data generates a net increase series. The reported month of surrendered WDLs is a reflection of the month Washington received the information and not when the driver left Washington. Therefore, the net increase is an estimate of net migration. Beginning with the April 1998 data, this report and supporting documentation are available via e-mail at the address below. Our formats are PDF for the report and Excel for the data files.

During the month of May (April 26, 2008 to May 31, 2008), a total of 12,131 out-of-state drivers obtained a Washington driver license. This is 1,982 more than the 10,149 who obtained licenses in May of 2007 (April 28, 2007 to May 26, 2007). Net migration to Washington for May 2008 was 8,425 drivers, compared to 4,185 the same month last year. For the 12 months ending May 2008, 139,453 out-of-state drivers obtained a Washington driver license, a decrease over the same period a year ago of 12.6 percent.

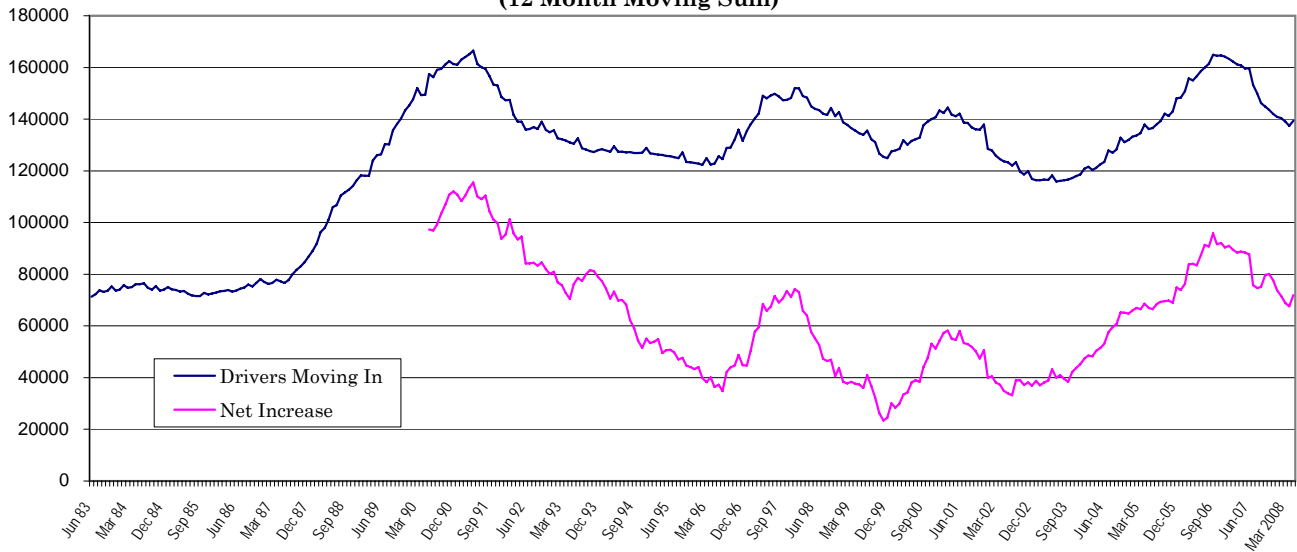
The table below displays data using a 12-month moving sum to help smooth out the monthly variance and reveal the trend. The graphs on the attached file display the results of this smoothing. The first graph plots new drivers moving into Washington as well as the net increase.

	May 2008			Year Ending May 2008		
	2007	2008	% Change	2007	2008	% Change
<b>Total Drivers In</b>	<b>10,149</b>	<b>12,131</b>	<b>19.5</b>	<b>159,633</b>	<b>139,453</b>	<b>-12.6</b>
<b>California</b>	2,072	2,385	15.1	34,534	27,543	-20.2
<b>Oregon</b>	1,297	1,539	18.7	19,412	17,512	-9.8
<b>Texas</b>	493	542	9.9	7,685	6,656	-13.4
<b>Returned WDL*</b>	5,964	3,706	-37.9	71,265	67,560	-5.2
<b>Net Increase</b>	<b>4,185</b>	<b>8,425</b>	<b>101.3</b>	<b>88,368</b>	<b>71,893</b>	<b>-18.6</b>

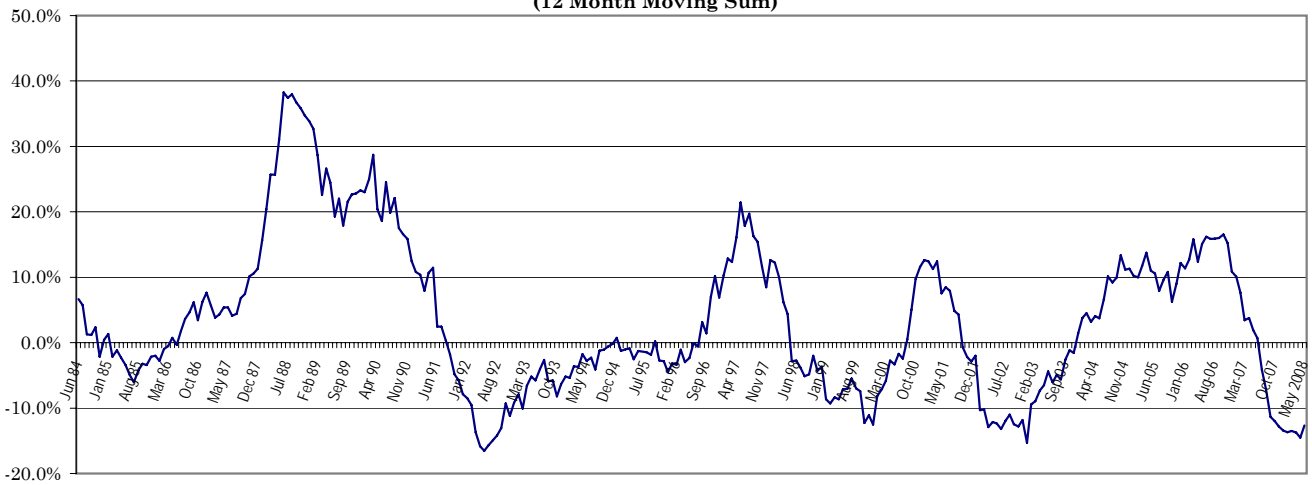
\* Reliability of the surrendered license data is limited by inconsistencies (e.g. incomplete reporting and delayed reporting) in the notification process of other

Alice Vogel, Economic Analyst  
Department of Licensing  
Research and Planning Office  
Highways and Licensing Building  
Olympia, WA 98501-48027  
(360) 902-3986  
FAX: (360) 753-7500  
E-Mail: avogel@dol.wa.gov

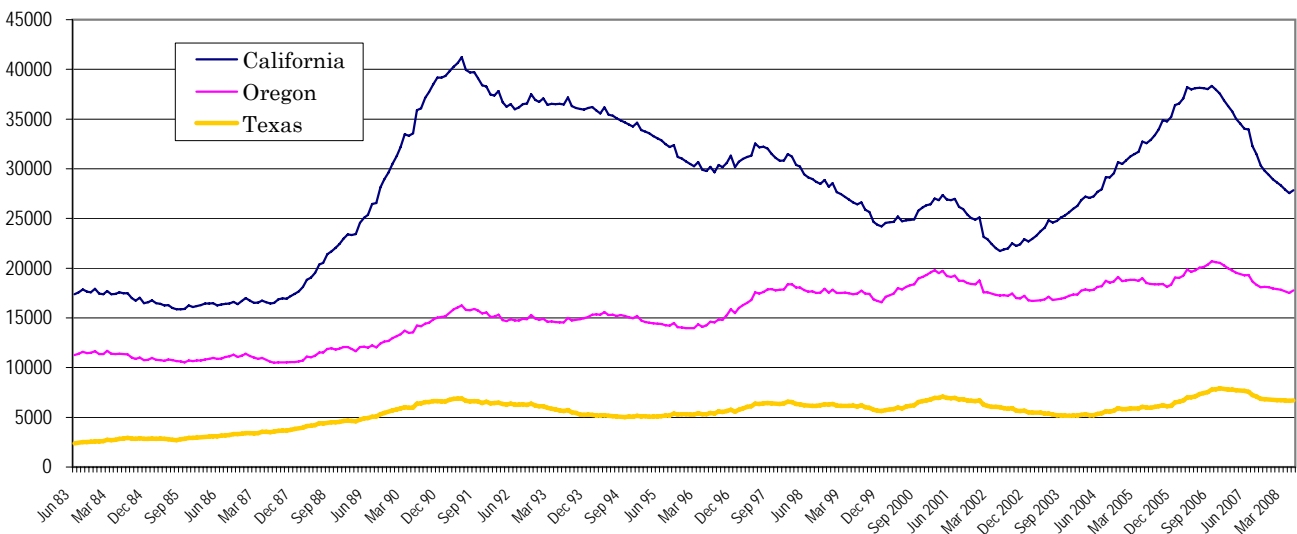
**Washington State Driver's Licenses  
(12 Month Moving Sum)**



**% Change Year Ago  
(12 Month Moving Sum)**



**Largest States  
(12 Months Moving Sum)**



## Net Increase States

Month: **May 2008**

State	IN	OUT	Net in Migration
ALABAMA	47	0	47
ALASKA	311	0	311
ARIZONA	536	0	536
ARKANSAS	60	29	31
CALIFORNIA	2385	18	2,367
COLORADO	323	407	(84)
CONNECTICUT	52	23	29
DELAWARE	9	7	2
FLORIDA	498	186	312
GEORGIA	217	75	142
HAWAII	187	94	93
IDAHO	562	565	(3)
ILLINOIS	217	8	209
INDIANA	132	69	63
IOWA	73	0	73
KANSAS	120	42	78
KENTUCKY	64	85	(21)
LOUISIANA	81	0	81
MAINE	43	33	10
MARYLAND	84	0	84
MASSACHUSETTS	107	0	107
MICHIGAN	256	26	230
MINNESOTA	160	137	23
MISSISSIPPI	46	0	46
MISSOURI	125	100	25
MONTANA	221	0	221
NEBRASKA	60	28	32
NEVADA	342	245	97
NEW HAMPSHIRE	31	20	11
NEW JERSEY	118	83	35
NEW MEXICO	108	55	53
NEW YORK	221	88	133
NORTH CAROLINA	217	0	217
NORTH DAKOTA	35	21	14
OHIO	190	33	157
OKLAHOMA	96	155	(59)
OREGON	1539	336	1,203
PENNSYLVANIA	138	35	103
RHODE ISLAND	18	34	(16)
SOUTH CAROLINA	57	67	(10)
SOUTH DAKOTA	57	33	24
TENNESSEE	135	172	(37)
TEXAS	542	5	537
UTAH	204	194	10
VERMONT	17	0	17
VIRGINIA	195	187	8
WASHINGTON	19	0	19
WEST VIRGINIA	8	0	8
WISCONSIN	160	6	154
WYOMING	46	0	46
WASH. DC	28	5	23
OUTSIDE U.S.	634	0	634
<b>TOTAL</b>	<b>12,131</b>	<b>3,706</b>	<b>8,425</b>

**May 2008 Totals by Location Moved From, and By County Moved To**

FROM/TO	TOTAL	GRAYS																				
		ADAMS	ASOTIN	BENTON	CHELAN	CLALLAM	CLARK	COLUMBIA	COWLITZ	DOUGLAS	FERRY	FRANKLIN	GARFIELD	GRANT	HARBOR	ISLAND	JEFFERSON	KING	KITSAP	KITTITAS	KLCKITAT	
ALABAMA	47	0	0	4	0	1	1	0	1	0	0	0	0	0	1	0	8	4	0	1		
ALASKA	311	2	1	10	1	5	13	0	3	1	0	1	0	6	6	6	5	84	12	2	2	
ARIZONA	536	1	1	13	1	14	44	0	5	1	1	2	0	8	5	7	7	175	19	1	3	
ARKANSAS	60	0	0	1	2	1	1	0	0	0	0	0	0	2	4	1	0	19	3	0	0	
CALIFORNIA	2385	5	7	29	29	53	170	1	21	14	0	36	0	16	10	48	15	923	96	2	4	
COLORADO	323	0	1	12	2	7	20	0	3	4	0	3	0	2	3	3	2	103	21	1	1	
CONNECTICUT	52	0	0	1	0	0	0	0	0	0	0	0	0	2	1	1	0	19	6	0	0	
DELAWARE	9	0	0	0	0	0	0	0	0	0	0	0	0	0	0	0	0	5	0	0	0	
FLORIDA	498	3	2	7	3	9	19	0	8	2	1	0	6	0	1	6	15	2	217	21	1	0
GEORGIA	217	2	2	2	0	0	8	0	0	0	0	5	0	1	0	2	0	102	22	1	0	
HAWAII	187	0	0	2	3	0	9	0	3	2	0	0	0	1	3	3	1	60	20	1	0	
IDAHO	562	1	49	29	9	5	21	1	7	3	1	5	0	8	4	5	2	92	7	6	2	
ILLINOIS	217	0	0	3	0	1	10	0	2	0	0	2	0	0	0	6	0	104	10	1	2	
INDIANA	132	0	0	0	2	2	10	0	0	0	0	0	0	0	0	2	0	47	13	2	0	
IOWA	73	0	0	2	1	0	3	0	0	0	0	0	0	0	0	1	0	33	4	0	0	
KANSAS	120	0	0	1	1	1	6	0	1	0	0	1	0	1	0	1	1	47	2	2	0	
KENTUCKY	64	0	0	1	1	1	2	0	1	0	0	0	0	0	0	0	0	18	1	0	0	
LOUISIANA	81	0	0	0	0	0	3	0	0	0	1	0	0	2	0	1	0	32	3	0	0	
MAINE	43	0	0	0	1	0	1	0	1	0	0	0	0	0	0	3	0	16	4	0	0	
MARYLAND	84	0	0	1	0	1	3	0	0	0	0	0	0	1	1	2	1	36	7	0	0	
MASSACHUSETTS	107	0	0	1	0	0	0	0	2	0	0	0	0	0	2	0	0	69	6	1	0	
MICHIGAN	256	0	0	2	1	0	10	0	1	0	0	2	0	0	0	5	0	119	12	0	0	
MINNESOTA	160	0	0	2	3	1	7	0	1	2	0	1	0	1	0	3	0	87	3	0	0	
MISSISSIPPI	46	0	0	0	0	1	4	0	0	0	0	0	0	0	0	3	1	17	2	0	0	
MISSOURI	125	0	0	5	1	2	5	0	1	0	0	0	0	2	2	6	1	53	5	0	0	
MONTANA	221	1	3	8	2	5	12	1	4	3	1	0	1	7	4	2	7	35	8	2	1	
NEBRASKA	60	1	1	1	2	1	5	0	0	0	0	1	0	2	2	1	0	20	2	0	0	
NEVADA	342	1	2	13	3	3	24	2	2	1	0	5	0	3	8	9	5	103	6	2	0	
NEW HAMPSHIRE	31	0	0	0	0	0	0	0	0	0	0	0	0	0	0	0	1	12	1	0	1	
NEW JERSEY	118	0	0	0	0	0	0	0	0	0	0	1	0	0	1	0	0	73	12	2	0	
NEW MEXICO	108	0	0	4	0	3	8	0	4	0	1	2	0	3	0	4	2	29	8	1	0	
NEW YORK	221	0	0	5	3	3	8	0	2	0	0	1	0	1	2	4	1	121	6	1	0	
NORTH CAROLINA	217	0	0	11	1	0	5	0	2	0	0	3	0	1	5	3	0	90	4	1	0	
NORTH DAKOTA	35	0	0	0	1	0	2	0	2	0	0	1	0	0	0	0	0	13	1	0	0	
OHIO	190	0	0	4	1	1	9	1	4	0	0	0	0	1	0	5	1	94	7	3	0	
OKLAHOMA	96	0	0	0	1	0	9	0	0	0	0	0	0	1	0	3	2	19	5	0	0	
OREGON	1539	8	3	50	9	13	498	2	55	3	3	31	0	16	19	11	10	255	36	4	19	
PENNSYLVANIA	138	0	0	1	1	4	2	0	1	1	0	0	0	0	0	5	3	69	3	0	0	
RHODE ISLAND	18	0	0	0	0	0	0	0	0	0	0	0	0	0	0	1	0	11	2	0	0	
SOUTH CAROLINA	57	0	0	4	0	0	2	0	0	0	0	0	0	0	0	1	0	15	9	0	1	
SOUTH DAKOTA	57	0	0	0	0	0	6	0	0	0	0	0	0	0	1	2	1	11	4	1	1	
TENNESSEE	135	0	1	8	1	2	11	0	6	1	0	1	0	2	1	4	0	38	3	0	0	
TEXAS	542	0	0	3	5	4	30	0	2	2	0	2	1	3	5	15	6	199	24	1	3	
UTAH	204	1	1	15	1	3	15	0	2	0	0	3	1	2	1	0	0	57	9	0	0	
VERMONT	17	0	0	0	0	0	1	0	0	0	0	0	0	0	0	0	1	8	0	0	0	
VIRGINIA	195	1	0	3	1	0	4	0	1	0	0	0	0	0	0	8	1	81	15	3	0	
WASHINGTON	19	0	0	0	0	2	2	0	0	0	0	0	0	0	0	0	1	8	5	0	0	
WEST VIRGINIA	8	0	0	0	0	0	0	0	0	0	0	0	0	0	0	1	0	2	1	0	0	
WISCONSIN	160	0	1	3	5	0	10	0	3	0	0	1	0	2	3	4	2	65	3	0	0	
WYOMING	46	0	1	1	2	0	3	0	0	0	0	1	0	0	0	0	0	8	2	2	0	
WASHINGTON D.C.	28	0	0	0	0	0	0	0	0	0	0	0	0	0	0	0	0	24	0	0	0	
ARGENTINA	0	0	0	0	0	0	0	0	0	0	0	0	0	0	0	0	0	0	0	0	0	
BELIZE (BRIT HONDU)	0	0	0	0	0	0	0	0	0	0	0	0	0	0	0	0	0	0	0	0	0	
BOLIVIA	0	0	0	0	0	0	0	0	0	0	0	0	0	0	0	0	0	0	0	0	0	

**May 2008 Totals by Location Moved From, and By County Moved To**

FROM / TO	TOTAL	GRAYS																			
		ADAMS	ASOTIN	BENTON	CHELAN	CLALLAM	CLARK	COLUMBIA	COWLITZ	DOUGLAS	FERRY	FRANKLIN	GARFIELD	GRANT	HARBOR	ISLAND	JEFFERSON	KING	KITSAP	KITTITAS	KLCKITAT
BRAZIL	12	0	0	0	0	0	1	0	1	0	0	0	0	0	0	0	0	8	0	0	0
CHILE	2	0	0	0	0	0	0	0	0	0	0	0	0	0	0	0	0	1	0	0	0
CANAL ZONE	0	0	0	0	0	0	0	0	0	0	0	0	0	0	0	0	0	0	0	0	0
COLUMBIA	1	0	0	0	0	0	0	0	0	0	0	0	0	0	0	0	0	1	0	0	0
COSTA RICA	0	0	0	0	0	0	0	0	0	0	0	0	0	0	0	0	0	0	0	0	0
EL SALVADOR	9	0	0	0	0	0	1	0	0	1	0	0	0	2	1	0	0	3	0	0	0
EQUADOR	3	0	0	0	0	0	0	0	0	0	0	0	0	0	0	0	0	3	0	0	0
GUYANA	0	0	0	0	0	0	0	0	0	0	0	0	0	0	0	0	0	0	0	0	0
NICARAGUA	0	0	0	0	0	0	0	0	0	0	0	0	0	0	0	0	0	0	0	0	0
PANAMA	0	0	0	0	0	0	0	0	0	0	0	0	0	0	0	0	0	0	0	0	0
PERU	6	0	0	0	2	0	0	0	0	0	0	0	0	0	0	0	0	4	0	0	0
PARAGUAY	1	0	0	0	1	0	0	0	0	0	0	0	0	0	0	0	0	0	0	0	0
SURINAM	0	0	0	0	0	0	0	0	0	0	0	0	0	0	0	0	0	0	0	0	0
TRINIDAD	0	0	0	0	0	0	0	0	0	0	0	0	0	0	0	0	0	0	0	0	0
UPPER VOLTA	0	0	0	0	0	0	0	0	0	0	0	0	0	0	0	0	0	0	0	0	0
URUGUAY	0	0	0	0	0	0	0	0	0	0	0	0	0	0	0	0	0	0	0	0	0
VENEZUELA	0	0	0	0	0	0	0	0	0	0	0	0	0	0	0	0	0	0	0	0	0
ALGERIA	1	0	0	0	0	0	0	0	0	0	0	0	0	0	0	0	0	1	0	0	0
ANGOLA	0	0	0	0	0	0	0	0	0	0	0	0	0	0	0	0	0	0	0	0	0
CAMERON	0	0	0	0	0	0	0	0	0	0	0	0	0	0	0	0	0	0	0	0	0
CHAD	0	0	0	0	0	0	0	0	0	0	0	0	0	0	0	0	0	0	0	0	0
CONGO	0	0	0	0	0	0	0	0	0	0	0	0	0	0	0	0	0	0	0	0	0
C. AFRICAN REP.	0	0	0	0	0	0	0	0	0	0	0	0	0	0	0	0	0	0	0	0	0
BOTSWANA	0	0	0	0	0	0	0	0	0	0	0	0	0	0	0	0	0	0	0	0	0
BURUNDI	0	0	0	0	0	0	0	0	0	0	0	0	0	0	0	0	0	0	0	0	0
DAHOMEY	0	0	0	0	0	0	0	0	0	0	0	0	0	0	0	0	0	0	0	0	0
EQ. GUINEA	0	0	0	0	0	0	0	0	0	0	0	0	0	0	0	0	0	0	0	0	0
EGYPT	1	0	0	0	0	0	0	0	0	0	0	0	0	0	0	0	0	1	0	0	0
ETHIOPIA	0	0	0	0	0	0	0	0	0	0	0	0	0	0	0	0	0	0	0	0	0
GABON	0	0	0	0	0	0	0	0	0	0	0	0	0	0	0	0	0	0	0	0	0
GAMBIA	0	0	0	0	0	0	0	0	0	0	0	0	0	0	0	0	0	0	0	0	0
GHANA	0	0	0	0	0	0	0	0	0	0	0	0	0	0	0	0	0	0	0	0	0
GUINEA	0	0	0	0	0	0	0	0	0	0	0	0	0	0	0	0	0	0	0	0	0
IVORY COAST	0	0	0	0	0	0	0	0	0	0	0	0	0	0	0	0	0	0	0	0	0
KENYA	5	0	0	0	0	0	0	0	0	0	0	0	0	0	0	0	0	3	0	0	0
LIBYA	0	0	0	0	0	0	0	0	0	0	0	0	0	0	0	0	0	0	0	0	0
LIBERIA	0	0	0	0	0	0	0	0	0	0	0	0	0	0	0	0	0	0	0	0	0
MALAWI	0	0	0	0	0	0	0	0	0	0	0	0	0	0	0	0	0	0	0	0	0
MALAGASY	1	0	0	0	0	0	0	0	0	0	0	0	0	0	0	0	0	0	0	0	0
MORROCCO	0	0	0	0	0	0	0	0	0	0	0	0	0	0	0	0	0	0	0	0	0
MAURITANIA	0	0	0	0	0	0	0	0	0	0	0	0	0	0	0	0	0	0	0	0	0
MALI	0	0	0	0	0	0	0	0	0	0	0	0	0	0	0	0	0	0	0	0	0
NIGER	0	0	0	0	0	0	0	0	0	0	0	0	0	0	0	0	0	0	0	0	0
NIGERIA	0	0	0	0	0	0	0	0	0	0	0	0	0	0	0	0	0	0	0	0	0
RHODESIA	0	0	0	0	0	0	0	0	0	0	0	0	0	0	0	0	0	0	0	0	0
RWANDA	0	0	0	0	0	0	0	0	0	0	0	0	0	0	0	0	0	0	0	0	0
SOUTH AFRICA	0	0	0	0	0	0	0	0	0	0	0	0	0	0	0	0	0	0	0	0	0
SOUTH WEST AFRICA	0	0	0	0	0	0	0	0	0	0	0	0	0	0	0	0	0	0	0	0	0
SIERRA LEONE	0	0	0	0	0	0	0	0	0	0	0	0	0	0	0	0	0	0	0	0	0
SWAZILAND	0	0	0	0	0	0	0	0	0	0	0	0	0	0	0	0	0	0	0	0	0
SENEGAL	0	0	0	0	0	0	0	0	0	0	0	0	0	0	0	0	0	0	0	0	0
SOMALI REPUBLIC	0	0	0	0	0	0	0	0	0	0	0	0	0	0	0	0	0	0	0	0	0
SUDAN	0	0	0	0	0	0	0	0	0	0	0	0	0	0	0	0	0	0	0	0	0
TOGO	0	0	0	0	0	0	0	0	0	0	0	0	0	0	0	0	0	0	0	0	0
TUNISIA	0	0	0	0	0	0	0	0	0	0	0	0	0	0	0	0	0	0	0	0	0
TANZANIA	0	0	0	0	0	0	0	0	0	0	0	0	0	0	0	0	0	0	0	0	0

May 2008 Totals by Location Moved From, and By County Moved To

FROM / TO	TOTAL	GRAYS																			
		ADAMS	ASOTIN	BENTON	CHELAN	CLALLAM	CLARK	COLUMBIA	COWLITZ	DOUGLAS	FERRY	FRANKLIN	GARFIELD	GRANT	HARBOR	ISLAND	JEFFERSON	KING	KITSAP	KITTITAS	KLCKITAT
UGANDA	0	0	0	0	0	0	0	0	0	0	0	0	0	0	0	0	0	0	0	0	0
ZAIRE	0	0	0	0	0	0	0	0	0	0	0	0	0	0	0	0	0	0	0	0	0
AFGHANISTAN	0	0	0	0	0	0	0	0	0	0	0	0	0	0	0	0	0	0	0	0	0
BANGLADESH	0	0	0	0	0	0	0	0	0	0	0	0	0	0	0	0	0	0	0	0	0
BHUTAN	2	0	0	0	0	0	0	0	0	0	0	0	0	0	0	0	0	2	0	0	0
BURMA	0	0	0	0	0	0	0	0	0	0	0	0	0	0	0	0	0	0	0	0	0
BAHRAIN	0	0	0	0	0	0	0	0	0	0	0	0	0	0	0	0	0	0	0	0	0
CEYLON (SRI LANKA)	0	0	0	0	0	0	0	0	0	0	0	0	0	0	0	0	0	0	0	0	0
CHINA	12	0	0	0	0	0	0	0	0	0	0	0	0	0	0	0	0	8	0	0	0
CAMBODIA	1	0	0	0	0	0	0	0	0	0	0	0	0	0	0	0	0	0	0	0	0
CYPRUS	0	0	0	0	0	0	0	0	0	0	0	0	0	0	0	0	0	0	0	0	0
JORDAN	0	0	0	0	0	0	0	0	0	0	0	0	0	0	0	0	0	0	0	0	0
JAPAN	6	0	1	0	0	0	0	0	0	0	0	0	0	0	0	0	0	3	0	0	0
KUWAIT	0	0	0	0	0	0	0	0	0	0	0	0	0	0	0	0	0	0	0	0	0
IRAN	0	0	0	0	0	0	0	0	0	0	0	0	0	0	0	0	0	0	0	0	0
ISRAEL	0	0	0	0	0	0	0	0	0	0	0	0	0	0	0	0	0	0	0	0	0
INDIA	30	0	0	0	0	0	0	0	0	0	0	0	0	0	0	0	0	28	0	0	0
IRAQ	1	0	0	0	0	0	1	0	0	0	0	0	0	0	0	0	0	0	0	0	0
INDONESIA	3	0	0	0	0	0	0	0	0	0	0	0	0	0	0	0	0	3	0	0	0
KOREA	14	0	0	0	0	0	0	0	0	0	0	0	0	0	0	0	0	9	0	0	0
LAOS	0	0	0	0	0	0	0	0	0	0	0	0	0	0	0	0	0	0	0	0	0
LEBANON	0	0	0	0	0	0	0	0	0	0	0	0	0	0	0	0	0	0	0	0	0
MALAYSIA	0	0	0	0	0	0	0	0	0	0	0	0	0	0	0	0	0	0	0	0	0
MONGOLIA	1	0	0	0	0	0	0	0	0	0	0	0	0	0	0	0	0	1	0	0	0
NEPAL	1	0	0	0	0	0	0	0	0	0	0	0	0	0	0	0	0	0	0	0	0
OMAN	0	0	0	0	0	0	0	0	0	0	0	0	0	0	0	0	0	0	0	0	0
PAKISTAN	2	0	0	0	0	0	0	0	0	0	0	0	0	0	0	0	0	1	0	0	0
QATAR	0	0	0	0	0	0	0	0	0	0	0	0	0	0	0	0	0	0	0	0	0
SIKKIM	0	0	0	0	0	0	0	0	0	0	0	0	0	0	0	0	0	0	0	0	0
SYRIA	0	0	0	0	0	0	0	0	0	0	0	0	0	0	0	0	0	0	0	0	0
SAUDI ARABIA	1	0	0	0	0	0	0	0	0	0	0	0	0	0	0	0	0	1	0	0	0
SINGAPORE	1	0	0	0	0	0	0	0	0	0	0	0	0	0	0	0	0	1	0	0	0
TAIWAN	2	0	0	0	0	0	0	0	0	0	0	0	0	0	0	1	0	0	0	0	0
THAILAND	2	0	0	0	0	0	0	0	0	0	0	0	0	0	0	0	0	2	0	0	0
TURKEY	2	0	0	0	0	0	0	0	0	0	0	0	0	0	0	0	0	2	0	0	0
USSR	6	0	0	0	0	0	1	0	0	0	0	0	0	0	0	0	0	5	0	0	0
UNITED ARAB EMIRATE	0	0	0	0	0	0	0	0	0	0	0	0	0	0	0	0	0	0	0	0	0
VIETNAM	1	0	0	0	0	0	0	0	0	0	0	0	0	0	0	0	0	0	0	0	0
YEMEN	0	0	0	0	0	0	0	0	0	0	0	0	0	0	0	0	0	0	0	0	0
AUSTRIA	0	0	0	0	0	0	0	0	0	0	0	0	0	0	0	0	0	0	0	0	0
BULGARIA	1	0	0	0	0	0	0	0	0	0	0	0	0	0	0	0	0	1	0	0	0
BELGIUM	1	0	0	0	0	0	0	0	0	0	0	0	0	0	0	0	0	1	0	0	0
DENMARK	0	0	0	0	0	0	0	0	0	0	0	0	0	0	0	0	0	0	0	0	0
ENGLAND	8	0	0	0	0	0	1	0	0	0	0	0	0	0	0	0	0	7	0	0	0
FRANCE	5	0	0	0	0	0	0	0	0	0	0	0	0	0	0	0	0	5	0	0	0
FINLAND	2	0	0	0	0	0	0	0	0	0	0	0	0	0	0	0	0	0	0	0	0
CZECHOSLAVAKIA	0	0	0	0	0	0	0	0	0	0	0	0	0	0	0	0	0	0	0	0	0
GREECE	0	0	0	0	0	0	0	0	0	0	0	0	0	0	0	0	0	0	0	0	0
GERMANY	14	0	0	0	0	0	0	0	0	0	0	0	0	0	0	0	0	6	0	0	0
IRELAND	1	0	0	0	0	0	0	0	0	0	0	0	0	0	0	0	0	1	0	0	0
ITALY	2	0	0	0	0	0	0	0	0	0	0	0	0	0	0	0	0	2	0	0	0
HUNGARY	0	0	0	0	0	0	0	0	0	0	0	0	0	0	0	0	0	0	0	0	0
LUXEMBOURG	0	0	0	0	0	0	0	0	0	0	0	0	0	0	0	0	0	0	0	0	0
NETHERLANDS	2	0	0	0	0	0	0	0	0	0	0	0	0	0	0	0	0	2	0	0	0
NORWAY	0	0	0	0	0	0	0	0	0	0	0	0	0	0	0	0	0	0	0	0	0
POLAND	4	0	0	0	0	0	0	0	0	0	0	0	0	0	0	0	0	3	0	0	0

**May 2008 Totals by Location Moved From, and By County Moved To**

FROM / TO	TOTAL	GRAYS																			
		ADAMS	ASOTIN	BENTON	CHELAN	CLALLAM	CLARK	COLUMBIA	COWLITZ	DOUGLAS	FERRY	FRANKLIN	GARFIELD	GRANT	HARBOR	ISLAND	JEFFERSON	KING	KITSAP	KITTITAS	KLCKITAT
SPAIN	2	0	0	0	0	0	0	0	0	0	0	0	0	0	0	0	0	1	0	0	0
SWITZERLAND	1	0	0	0	0	0	0	0	0	0	0	0	0	0	0	0	0	1	0	0	0
SWEDEN	1	0	0	0	0	0	0	0	0	0	0	0	0	0	0	0	0	1	0	0	0
ROMANIA	0	0	0	0	0	0	0	0	0	0	0	0	0	0	0	0	0	0	0	0	0
YUGOSLAVIA	2	0	0	0	0	0	0	0	0	0	0	0	0	0	0	0	0	0	0	0	0
ALBANIA	0	0	0	0	0	0	0	0	0	0	0	0	0	0	0	0	0	0	0	0	0
ANDORRA	0	0	0	0	0	0	0	0	0	0	0	0	0	0	0	0	0	0	0	0	0
AMERICAN SAMOA	25	0	0	0	0	0	0	0	0	0	0	0	0	0	0	0	1	15	0	0	0
BORNEO	0	0	0	0	0	0	0	0	0	0	0	0	0	0	0	0	0	0	0	0	0
CUBA	0	0	0	0	0	0	0	0	0	0	0	0	0	0	0	0	0	0	0	0	0
BERMUDA	0	0	0	0	0	0	0	0	0	0	0	0	0	0	0	0	0	0	0	0	0
DOMINICAN REPUBLIC	0	0	0	0	0	0	0	0	0	0	0	0	0	0	0	0	0	0	0	0	0
FIJI	0	0	0	0	0	0	0	0	0	0	0	0	0	0	0	0	0	0	0	0	0
GUAM	45	0	0	0	0	0	9	0	0	0	0	0	0	0	0	1	0	11	11	0	0
HAITI	1	0	0	0	0	0	0	0	0	0	0	0	0	0	0	0	0	0	0	0	0
JAMAICA	0	0	0	0	0	0	0	0	0	0	0	0	0	0	0	0	0	0	0	0	0
NEW ZEALAND	2	0	0	0	0	0	0	0	0	0	0	0	0	0	0	0	0	2	0	0	0
PORTUGAL	1	0	0	0	0	0	0	0	0	0	0	0	0	0	0	0	0	1	0	0	0
PHILIPPINES	8	0	0	0	0	0	0	0	0	0	0	0	0	0	0	1	0	7	0	0	0
PUERTO RICO	15	0	1	0	0	0	0	0	0	0	0	0	0	0	0	0	0	1	0	0	0
TAHITI	0	0	0	0	0	0	0	0	0	0	0	0	0	0	0	0	0	0	0	0	0
TONGA	0	0	0	0	0	0	0	0	0	0	0	0	0	0	0	0	0	0	0	0	0
VIRGIN ISLANDS	0	0	0	0	0	0	0	0	0	0	0	0	0	0	0	0	0	0	0	0	0
WEST SAMOA	0	0	0	0	0	0	0	0	0	0	0	0	0	0	0	0	0	0	0	0	0
AUSTRALIA	8	0	0	0	0	0	0	0	0	0	0	0	0	0	0	1	0	7	0	0	0
ANTARTICA	0	0	0	0	0	0	0	0	0	0	0	0	0	0	0	0	0	0	0	0	0
ICELAND	0	0	0	0	0	0	0	0	0	0	0	0	0	0	0	0	0	0	0	0	0
GREENLAND	0	0	0	0	0	0	0	0	0	0	0	0	0	0	0	0	0	0	0	0	0
MEXICO	132	0	0	6	6	0	6	0	1	7	0	7	0	2	0	0	0	65	0	0	0
ALBERTA	8	0	0	0	0	0	0	0	0	0	0	0	0	0	0	0	0	5	0	0	1
BRITISH COLUMBIA	94	0	0	1	0	1	0	0	0	0	0	1	0	1	0	1	0	39	7	0	0
MANITOBA	0	0	0	0	0	0	0	0	0	0	0	0	0	0	0	0	0	0	0	0	0
NEW BRUNSWICK	0	0	0	0	0	0	0	0	0	0	0	0	0	0	0	0	0	0	0	0	0
NEWFOUNDLAND	0	0	0	0	0	0	0	0	0	0	0	0	0	0	0	0	0	0	0	0	0
NOVA SCOTIA	0	0	0	0	0	0	0	0	0	0	0	0	0	0	0	0	0	0	0	0	0
ONTARIO	40	0	0	0	0	0	1	0	0	0	0	0	0	0	1	0	0	29	1	0	0
PRINCE EDWARD IS.	0	0	0	0	0	0	0	0	0	0	0	0	0	0	0	0	0	0	0	0	0
QUEBEC	12	0	0	0	0	0	0	0	0	0	0	0	0	0	0	0	0	10	0	0	0
SASKATCHEWAN	0	0	0	0	0	0	0	0	0	0	0	0	0	0	0	0	0	0	0	0	0
NORTHWEST TERRITORY	0	0	0	0	0	0	0	0	0	0	0	0	0	0	0	0	0	0	0	0	0
YUKON TERRITORY	0	0	0	0	0	0	0	0	0	0	0	0	0	0	0	0	0	0	0	0	0
UNKNOWN	67	0	0	2	0	2	4	0	0	0	0	0	0	2	0	0	0	24	1	0	1
<b>** TOTAL **</b>	<b>12131</b>	<b>27</b>	<b>78</b>	<b>271</b>	<b>109</b>	<b>152</b>	<b>1061</b>	<b>8</b>	<b>153</b>	<b>47</b>	<b>8</b>	<b>125</b>	<b>3</b>	<b>105</b>	<b>101</b>	<b>213</b>	<b>83</b>	<b>4283</b>	<b>499</b>	<b>44</b>	<b>43</b>

May 2008 Totals by Location Moved From, and By County Moved To

FROM / TO	LEWIS	LINCOLN	MASON	OKANAGON	PACIFIC	PEND OREILLE	PIERCE	SAN JUAN	SKAGIT	SKAMANIA	SNOHOMISH	SPOKANE	STEVENS	THURSTON	WAHKIAKUM	WALLA	WHATCOM	WHITMAN	YAKIMA	UNKNOWN
ALABAMA	0	0	0	0	0	0	13	0	0	0	5	1	0	5	0	0	1	1	0	0
ALASKA	4	3	4	6	4	2	29	1	8	3	32	18	1	16	0	1	13	0	6	0
ARIZONA	5	0	5	6	3	3	48	1	11	0	45	35	11	17	0	3	25	3	7	0
ARKANSAS	0	0	0	0	0	0	6	0	1	0	8	7	0	0	0	0	1	0	3	0
CALIFORNIA	21	0	13	9	10	7	232	10	33	2	168	139	16	79	0	24	89	13	38	3
COLORADO	1	0	2	2	0	0	29	4	10	1	33	22	1	20	1	4	2	1	2	0
CONNECTICUT	0	0	0	0	0	0	11	0	0	0	2	3	0	0	0	1	5	0	0	0
DELAWARE	0	0	0	0	0	0	2	0	0	0	0	0	0	1	0	0	1	0	0	0
FLORIDA	6	0	5	2	2	1	50	0	2	0	51	19	1	12	0	3	12	1	10	0
GEORGIA	1	1	1	1	0	0	34	0	0	0	13	4	0	7	0	1	4	0	2	1
HAWAII	2	0	0	0	0	2	25	3	2	0	16	9	0	12	0	2	5	1	0	0
IDAHO	5	2	2	6	3	6	43	2	5	1	29	128	1	16	0	12	11	16	17	0
ILLINOIS	0	0	1	1	0	1	24	0	6	0	20	10	0	6	0	0	4	1	2	0
INDIANA	0	0	0	3	0	0	21	0	5	1	9	4	0	4	0	3	0	0	4	0
IOWA	1	0	0	0	0	0	3	0	1	0	10	4	1	3	0	0	3	0	3	0
KANSAS	1	0	1	3	0	0	19	0	1	0	12	5	1	7	0	2	1	1	1	0
KENTUCKY	0	0	0	0	0	0	15	1	3	0	11	3	0	2	0	0	0	0	4	0
LOUISIANA	0	0	1	0	0	0	16	0	1	0	4	5	1	6	0	0	3	1	1	0
MAINE	0	0	1	0	0	0	5	0	1	0	4	1	0	2	0	1	2	0	0	0
MARYLAND	0	0	0	0	0	0	6	0	3	0	8	0	3	5	0	0	4	0	2	0
MASSACHUSETTS	0	0	0	0	0	0	7	0	1	0	8	0	2	5	0	1	1	1	0	0
MICHIGAN	2	0	1	1	0	0	29	0	1	0	35	11	3	9	0	0	8	1	3	0
MINNESOTA	0	0	1	0	2	0	7	0	0	0	18	8	0	6	0	0	5	1	1	0
MISSISSIPPI	0	0	0	0	0	0	4	0	2	0	4	4	0	2	0	0	1	0	1	0
MISSOURI	0	0	0	0	0	0	13	1	2	0	12	8	1	2	0	0	2	1	0	0
MONTANA	2	2	4	1	1	3	16	1	3	0	13	43	5	7	0	4	5	3	1	0
NEBRASKA	0	0	1	1	0	0	9	0	0	0	5	1	0	1	0	0	0	0	3	0
NEVADA	5	0	3	4	1	2	40	2	8	1	22	20	5	12	0	2	8	1	14	0
NEW HAMPSHIRE	0	0	1	0	0	0	3	1	1	0	2	3	0	3	0	0	2	0	0	0
NEW JERSEY	0	0	0	0	0	0	9	0	0	0	8	2	0	3	0	0	7	0	0	0
NEW MEXICO	0	0	3	1	0	1	12	0	2	0	11	5	0	1	0	0	2	0	1	0
NEW YORK	1	2	1	0	1	0	18	1	1	0	20	5	1	1	0	4	4	0	3	0
NORTH CAROLINA	1	0	0	0	1	0	29	1	3	0	24	5	0	12	0	0	7	1	7	0
NORTH DAKOTA	0	0	1	0	1	0	2	0	0	0	4	4	0	2	0	0	1	0	0	0
OHIO	1	2	0	0	0	0	17	0	5	0	14	5	0	5	0	0	6	3	1	0
OKLAHOMA	0	0	0	2	1	0	24	0	1	0	7	5	0	6	0	0	3	2	5	0
OREGON	30	0	9	2	10	1	104	9	14	5	80	63	12	47	2	34	28	4	36	4
PENNSYLVANIA	1	0	0	0	0	0	17	0	1	0	14	6	0	6	0	0	2	0	1	0
RHODE ISLAND	0	0	0	0	0	0	1	0	0	0	2	0	0	1	0	0	0	0	0	0
SOUTH CAROLINA	2	0	0	0	0	0	9	0	3	0	5	1	1	2	0	0	0	1	1	0
SOUTH DAKOTA	2	0	0	1	1	0	3	0	1	0	3	5	0	4	0	0	7	1	2	0
TENNESSEE	0	0	1	0	1	0	17	0	0	0	12	7	1	11	0	0	3	1	2	0
TEXAS	6	0	3	2	0	2	75	1	22	0	42	24	0	28	0	3	16	3	10	0
UTAH	1	0	0	1	0	0	20	0	5	0	19	22	0	10	0	0	5	5	5	0
VERMONT	0	0	0	0	0	0	2	0	0	0	1	1	0	3	0	0	0	0	0	0
VIRGINIA	3	0	1	0	0	0	25	0	4	0	11	6	0	19	0	0	3	0	5	0
WASHINGTON	0	0	0	0	0	0	1	0	0	0	0	0	0	0	0	0	0	0	0	0
WEST VIRGINIA	0	0	0	0	0	0	1	0	0	0	2	0	0	0	0	1	0	0	0	0
WISCONSIN	0	0	1	1	1	0	17	0	1	0	16	8	0	4	0	1	4	1	3	0
WYOMING	2	0	1	1	0	0	8	0	1	0	4	2	1	1	0	2	1	1	1	0
WASHINGTON D.C.	0	0	0	0	1	0	0	0	0	0	0	1	1	1	0	0	0	0	0	0
ARGENTINA	0	0	0	0	0	0	0	0	0	0	0	0	0	0	0	0	0	0	0	0
BELIZE (BRIT HONDU)	0	0	0	0	0	0	0	0	0	0	0	0	0	0	0	0	0	0	0	0
BOLIVIA	0	0	0	0	0	0	0	0	0	0	0	0	0	0	0	0	0	0	0	0

May 2008 Totals by Location Moved From, and By County Moved To

FROM / TO	LEWIS	LINCOLN	MASON	OKANAGON	PACIFIC	PEND OREILLE	PIERCE	SAN JUAN	SKAGIT	SKAMANIA	SNOHOMISH	SPOKANE	STEVENS	THURSTON	WAHKIAKUM	WALLA WALLA	WHATCOM	WHITMAN	YAKIMA	UNKNOWN
BRAZIL	0	0	0	0	0	0	1	0	0	0	0	1	0	0	0	0	0	0	0	0
CHILE	0	0	0	0	1	0	0	0	0	0	0	0	0	0	0	0	0	0	0	0
CANAL ZONE	0	0	0	0	0	0	0	0	0	0	0	0	0	0	0	0	0	0	0	0
COLUMBIA	0	0	0	0	0	0	0	0	0	0	0	0	0	0	0	0	0	0	0	0
COSTA RICA	0	0	0	0	0	0	0	0	0	0	0	0	0	0	0	0	0	0	0	0
EL SALVADOR	0	0	0	0	0	0	1	0	0	0	0	0	0	0	0	0	0	0	0	0
EQUADOR	0	0	0	0	0	0	0	0	0	0	0	0	0	0	0	0	0	0	0	0
GUYANA	0	0	0	0	0	0	0	0	0	0	0	0	0	0	0	0	0	0	0	0
NICARAGUA	0	0	0	0	0	0	0	0	0	0	0	0	0	0	0	0	0	0	0	0
PANAMA	0	0	0	0	0	0	0	0	0	0	0	0	0	0	0	0	0	0	0	0
PERU	0	0	0	0	0	0	0	0	0	0	0	0	0	0	0	0	0	0	0	0
PARAGUAY	0	0	0	0	0	0	0	0	0	0	0	0	0	0	0	0	0	0	0	0
SURINAM	0	0	0	0	0	0	0	0	0	0	0	0	0	0	0	0	0	0	0	0
TRINIDAD	0	0	0	0	0	0	0	0	0	0	0	0	0	0	0	0	0	0	0	0
UPPER VOLTA	0	0	0	0	0	0	0	0	0	0	0	0	0	0	0	0	0	0	0	0
URUGUAY	0	0	0	0	0	0	0	0	0	0	0	0	0	0	0	0	0	0	0	0
VENEZUELA	0	0	0	0	0	0	0	0	0	0	0	0	0	0	0	0	0	0	0	0
ALGERIA	0	0	0	0	0	0	0	0	0	0	0	0	0	0	0	0	0	0	0	0
ANGOLA	0	0	0	0	0	0	0	0	0	0	0	0	0	0	0	0	0	0	0	0
CAMERON	0	0	0	0	0	0	0	0	0	0	0	0	0	0	0	0	0	0	0	0
CHAD	0	0	0	0	0	0	0	0	0	0	0	0	0	0	0	0	0	0	0	0
CONGO	0	0	0	0	0	0	0	0	0	0	0	0	0	0	0	0	0	0	0	0
C. AFRICAN REP.	0	0	0	0	0	0	0	0	0	0	0	0	0	0	0	0	0	0	0	0
BOTSWANA	0	0	0	0	0	0	0	0	0	0	0	0	0	0	0	0	0	0	0	0
BURUNDI	0	0	0	0	0	0	0	0	0	0	0	0	0	0	0	0	0	0	0	0
DAHOMEY	0	0	0	0	0	0	0	0	0	0	0	0	0	0	0	0	0	0	0	0
EQ. GUINEA	0	0	0	0	0	0	0	0	0	0	0	0	0	0	0	0	0	0	0	0
EGYPT	0	0	0	0	0	0	0	0	0	0	0	0	0	0	0	0	0	0	0	0
ETHIOPIA	0	0	0	0	0	0	0	0	0	0	0	0	0	0	0	0	0	0	0	0
GABON	0	0	0	0	0	0	0	0	0	0	0	0	0	0	0	0	0	0	0	0
GAMBIA	0	0	0	0	0	0	0	0	0	0	0	0	0	0	0	0	0	0	0	0
GHANA	0	0	0	0	0	0	0	0	0	0	0	0	0	0	0	0	0	0	0	0
GUINEA	0	0	0	0	0	0	0	0	0	0	0	0	0	0	0	0	0	0	0	0
IVORY COAST	0	0	0	0	0	0	0	0	0	0	0	0	0	0	0	0	0	0	0	0
KENYA	0	0	0	0	0	0	1	0	0	0	1	0	0	0	0	0	0	0	0	0
LIBYA	0	0	0	0	0	0	0	0	0	0	0	0	0	0	0	0	0	0	0	0
LIBERIA	0	0	0	0	0	0	0	0	0	0	0	0	0	0	0	0	0	0	0	0
MALAWI	0	0	0	0	0	0	0	0	0	0	0	0	0	0	0	0	0	0	0	0
MALAGASY	0	0	0	0	0	0	0	0	0	0	0	1	0	0	0	0	0	0	0	0
MORROCCO	0	0	0	0	0	0	0	0	0	0	0	0	0	0	0	0	0	0	0	0
MAURITANIA	0	0	0	0	0	0	0	0	0	0	0	0	0	0	0	0	0	0	0	0
MALI	0	0	0	0	0	0	0	0	0	0	0	0	0	0	0	0	0	0	0	0
NIGER	0	0	0	0	0	0	0	0	0	0	0	0	0	0	0	0	0	0	0	0
NIGERIA	0	0	0	0	0	0	0	0	0	0	0	0	0	0	0	0	0	0	0	0
RHODESIA	0	0	0	0	0	0	0	0	0	0	0	0	0	0	0	0	0	0	0	0
RWANDA	0	0	0	0	0	0	0	0	0	0	0	0	0	0	0	0	0	0	0	0
SOUTH AFRICA	0	0	0	0	0	0	0	0	0	0	0	0	0	0	0	0	0	0	0	0
SOUTH WEST AFRICA	0	0	0	0	0	0	0	0	0	0	0	0	0	0	0	0	0	0	0	0
SIERRA LEONE	0	0	0	0	0	0	0	0	0	0	0	0	0	0	0	0	0	0	0	0
SWAZILAND	0	0	0	0	0	0	0	0	0	0	0	0	0	0	0	0	0	0	0	0
SENEGAL	0	0	0	0	0	0	0	0	0	0	0	0	0	0	0	0	0	0	0	0
SOMALI REPUBLIC	0	0	0	0	0	0	0	0	0	0	0	0	0	0	0	0	0	0	0	0
SUDAN	0	0	0	0	0	0	0	0	0	0	0	0	0	0	0	0	0	0	0	0
TOGO	0	0	0	0	0	0	0	0	0	0	0	0	0	0	0	0	0	0	0	0
TUNISIA	0	0	0	0	0	0	0	0	0	0	0	0	0	0	0	0	0	0	0	0
TANZANIA	0	0	0	0	0	0	0	0	0	0	0	0	0	0	0	0	0	0	0	0

May 2008 Totals by Location Moved From, and By County Moved To

FROM / TO	LEWIS	LINCOLN	MASON	OKANAGON	PACIFIC	PEND OREILLE	PIERCE	SAN JUAN	SKAGIT	SKAMANIA	SNOHOMISH	SPOKANE	STEVENS	THURSTON	WAHKIAKUM	WALLA WALLA	WHATCOM	WHITMAN	YAKIMA	UNKNOWN
UGANDA	0	0	0	0	0	0	0	0	0	0	0	0	0	0	0	0	0	0	0	0
ZAIRE	0	0	0	0	0	0	0	0	0	0	0	0	0	0	0	0	0	0	0	0
AFGHANISTAN	0	0	0	0	0	0	0	0	0	0	0	0	0	0	0	0	0	0	0	0
BANGLADESH	0	0	0	0	0	0	0	0	0	0	0	0	0	0	0	0	0	0	0	0
BHUTAN	0	0	0	0	0	0	0	0	0	0	0	0	0	0	0	0	0	0	0	0
BURMA	0	0	0	0	0	0	0	0	0	0	0	0	0	0	0	0	0	0	0	0
BAHRAIN	0	0	0	0	0	0	0	0	0	0	0	0	0	0	0	0	0	0	0	0
CEYLON (SRI LANKA)	0	0	0	0	0	0	0	0	0	0	0	0	0	0	0	0	0	0	0	0
CHINA	0	0	0	0	0	0	0	0	0	0	1	0	0	0	0	0	0	3	0	0
CAMBODIA	0	0	0	0	0	0	1	0	0	0	0	0	0	0	0	0	0	0	0	0
CYPRUS	0	0	0	0	0	0	0	0	0	0	0	0	0	0	0	0	0	0	0	0
JORDAN	0	0	0	0	0	0	0	0	0	0	0	0	0	0	0	0	0	0	0	0
JAPAN	0	0	0	0	0	0	0	0	0	0	0	0	0	0	0	0	0	2	0	0
KUWAIT	0	0	0	0	0	0	0	0	0	0	0	0	0	0	0	0	0	0	0	0
IRAN	0	0	0	0	0	0	0	0	0	0	0	0	0	0	0	0	0	0	0	0
ISRAEL	0	0	0	0	0	0	0	0	0	0	0	0	0	0	0	0	0	0	0	0
INDIA	0	0	0	0	0	0	0	0	0	0	1	0	0	0	0	0	0	1	0	0
IRAQ	0	0	0	0	0	0	0	0	0	0	0	0	0	0	0	0	0	0	0	0
INDONESIA	0	0	0	0	0	0	0	0	0	0	0	0	0	0	0	0	0	0	0	0
KOREA	0	0	0	0	0	0	3	0	0	0	1	0	0	0	0	0	0	1	0	0
LAOS	0	0	0	0	0	0	0	0	0	0	0	0	0	0	0	0	0	0	0	0
LEBANON	0	0	0	0	0	0	0	0	0	0	0	0	0	0	0	0	0	0	0	0
MALAYSIA	0	0	0	0	0	0	0	0	0	0	0	0	0	0	0	0	0	0	0	0
MONGOLIA	0	0	0	0	0	0	0	0	0	0	0	0	0	0	0	0	0	0	0	0
NEPAL	0	0	0	0	0	0	0	0	0	0	0	0	0	0	0	0	0	1	0	0
OMAN	0	0	0	0	0	0	0	0	0	0	0	0	0	0	0	0	0	0	0	0
PAKISTAN	0	0	0	0	0	0	0	0	0	0	0	0	0	0	0	0	0	1	0	0
QATAR	0	0	0	0	0	0	0	0	0	0	0	0	0	0	0	0	0	0	0	0
SIKKIM	0	0	0	0	0	0	0	0	0	0	0	0	0	0	0	0	0	0	0	0
SYRIA	0	0	0	0	0	0	0	0	0	0	0	0	0	0	0	0	0	0	0	0
SAUDI ARABIA	0	0	0	0	0	0	0	0	0	0	0	0	0	0	0	0	0	0	0	0
SINGAPORE	0	0	0	0	0	0	0	0	0	0	0	0	0	0	0	0	0	0	0	0
TAIWAN	0	0	0	0	0	0	0	0	0	0	0	0	0	0	0	0	0	1	0	0
THAILAND	0	0	0	0	0	0	0	0	0	0	0	0	0	0	0	0	0	0	0	0
TURKEY	0	0	0	0	0	0	0	0	0	0	0	0	0	0	0	0	0	0	0	0
USSR	0	0	0	0	0	0	0	0	0	0	0	0	0	0	0	0	0	0	0	0
UNITED ARAB EMIRATE	0	0	0	0	0	0	0	0	0	0	0	0	0	0	0	0	0	0	0	0
VIETNAM	0	0	0	0	0	0	0	0	0	0	1	0	0	0	0	0	0	0	0	0
YEMEN	0	0	0	0	0	0	0	0	0	0	0	0	0	0	0	0	0	0	0	0
AUSTRIA	0	0	0	0	0	0	0	0	0	0	0	0	0	0	0	0	0	0	0	0
BULGARIA	0	0	0	0	0	0	0	0	0	0	0	0	0	0	0	0	0	0	0	0
BELGIUM	0	0	0	0	0	0	0	0	0	0	0	0	0	0	0	0	0	0	0	0
DENMARK	0	0	0	0	0	0	0	0	0	0	0	0	0	0	0	0	0	0	0	0
ENGLAND	0	0	0	0	0	0	0	0	0	0	0	0	0	0	0	0	0	0	0	0
FRANCE	0	0	0	0	0	0	0	0	0	0	0	0	0	0	0	0	0	0	0	0
FINLAND	0	0	0	0	0	0	0	0	0	0	2	0	0	0	0	0	0	0	0	0
CZECHOSLAVAKIA	0	0	0	0	0	0	0	0	0	0	0	0	0	0	0	0	0	0	0	0
GREECE	0	0	0	0	0	0	0	0	0	0	0	0	0	0	0	0	0	0	0	0
GERMANY	0	0	0	0	0	0	3	0	0	0	3	1	0	1	0	0	0	0	0	0
IRELAND	0	0	0	0	0	0	0	0	0	0	0	0	0	0	0	0	0	0	0	0
ITALY	0	0	0	0	0	0	0	0	0	0	0	0	0	0	0	0	0	0	0	0
HUNGARY	0	0	0	0	0	0	0	0	0	0	0	0	0	0	0	0	0	0	0	0
LUXEMBOURG	0	0	0	0	0	0	0	0	0	0	0	0	0	0	0	0	0	0	0	0
NETHERLANDS	0	0	0	0	0	0	0	0	0	0	0	0	0	0	0	0	0	0	0	0
NORWAY	0	0	0	0	0	0	0	0	0	0	0	0	0	0	0	0	0	0	0	0
POLAND	0	0	0	0	0	0	1	0	0	0	0	0	0	0	0	0	0	0	0	0

**May 2008 Totals by Location Moved From, and By County Moved To**

FROM / TO	LEWIS	LINCOLN	MASON	OKANAGON	PACIFIC	PEND OREILLE	PIERCE	SAN JUAN	SKAGIT	SKAMANIA	SNOHOMISH	SPOKANE	STEVENS	THURSTON	WAHKIAKUM	WALLA WALLA	WHATCOM	WHITMAN	YAKIMA	UNKNOWN
SPAIN	0	0	0	0	0	0	0	0	0	0	1	0	0	0	0	0	0	0	0	0
SWITZERLAND	0	0	0	0	0	0	0	0	0	0	0	0	0	0	0	0	0	0	0	0
SWEDEN	0	0	0	0	0	0	0	0	0	0	0	0	0	0	0	0	0	0	0	0
ROMANIA	0	0	0	0	0	0	0	0	0	0	0	0	0	0	0	0	0	0	0	0
YUGOSLAVIA	0	0	0	0	0	0	0	0	0	0	2	0	0	0	0	0	0	0	0	0
ALBANIA	0	0	0	0	0	0	0	0	0	0	0	0	0	0	0	0	0	0	0	0
ANDORRA	0	0	0	0	0	0	0	0	0	0	0	0	0	0	0	0	0	0	0	0
AMERICAN SAMOA	0	0	0	0	0	0	8	0	0	0	0	0	0	1	0	0	0	0	0	0
BORNEO	0	0	0	0	0	0	0	0	0	0	0	0	0	0	0	0	0	0	0	0
CUBA	0	0	0	0	0	0	0	0	0	0	0	0	0	0	0	0	0	0	0	0
BERMUDA	0	0	0	0	0	0	0	0	0	0	0	0	0	0	0	0	0	0	0	0
DOMINICAN REPUBLIC	0	0	0	0	0	0	0	0	0	0	0	0	0	0	0	0	0	0	0	0
FIJI	0	0	0	0	0	0	0	0	0	0	0	0	0	0	0	0	0	0	0	0
GUAM	0	0	0	0	0	0	7	0	0	0	5	0	0	1	0	0	0	0	0	0
HAITI	0	0	0	0	0	0	0	0	0	0	0	0	1	0	0	0	0	0	0	0
JAMAICA	0	0	0	0	0	0	0	0	0	0	0	0	0	0	0	0	0	0	0	0
NEW ZEALAND	0	0	0	0	0	0	0	0	0	0	0	0	0	0	0	0	0	0	0	0
PORTUGAL	0	0	0	0	0	0	0	0	0	0	0	0	0	0	0	0	0	0	0	0
PHILIPPINES	0	0	0	0	0	0	0	0	0	0	0	0	0	0	0	0	0	0	0	0
PUERTO RICO	0	0	0	0	0	0	9	0	0	0	1	0	0	2	0	0	1	0	0	0
TAHITI	0	0	0	0	0	0	0	0	0	0	0	0	0	0	0	0	0	0	0	0
TONGA	0	0	0	0	0	0	0	0	0	0	0	0	0	0	0	0	0	0	0	0
VIRGIN ISLANDS	0	0	0	0	0	0	0	0	0	0	0	0	0	0	0	0	0	0	0	0
WEST SAMOA	0	0	0	0	0	0	0	0	0	0	0	0	0	0	0	0	0	0	0	0
AUSTRALIA	0	0	0	0	0	0	0	0	0	0	0	0	0	0	0	0	0	0	0	0
ANTARTICA	0	0	0	0	0	0	0	0	0	0	0	0	0	0	0	0	0	0	0	0
ICELAND	0	0	0	0	0	0	0	0	0	0	0	0	0	0	0	0	0	0	0	0
GREENLAND	0	0	0	0	0	0	0	0	0	0	0	0	0	0	0	0	0	0	0	0
MEXICO	1	0	2	1	1	0	2	0	2	0	8	2	0	1	0	2	0	1	9	0
ALBERTA	0	0	0	0	0	0	0	0	0	0	0	1	0	0	0	0	0	0	1	0
BRITISH COLUMBIA	3	0	0	1	0	0	3	0	1	0	6	2	1	1	0	0	24	1	0	0
MANITOBA	0	0	0	0	0	0	0	0	0	0	0	0	0	0	0	0	0	0	0	0
NEW BRUNSWICK	0	0	0	0	0	0	0	0	0	0	0	0	0	0	0	0	0	0	0	0
NEWFOUNDLAND	0	0	0	0	0	0	0	0	0	0	0	0	0	0	0	0	0	0	0	0
NOVA SCOTIA	0	0	0	0	0	0	0	0	0	0	0	0	0	0	0	0	0	0	0	0
ONTARIO	0	0	0	0	0	0	2	0	0	0	4	0	0	1	0	0	1	0	0	0
PRINCE EDWARD IS.	0	0	0	0	0	0	0	0	0	0	0	0	0	0	0	0	0	0	0	0
QUEBEC	0	0	0	0	0	0	0	0	0	0	2	0	0	0	0	0	0	0	0	0
SASKATCHEWAN	0	0	0	0	0	0	0	0	0	0	0	0	0	0	0	0	0	0	0	0
NORTHWEST TERRITORY	0	0	0	0	0	0	0	0	0	0	0	0	0	0	0	0	0	0	0	0
YUKON TERRITORY	0	0	0	0	0	0	0	0	0	0	0	0	0	0	0	0	0	0	0	0
UNKNOWN	0	0	1	0	0	0	11	0	2	0	5	4	0	8	0	0	0	0	0	0
<b>** TOTAL **</b>	<b>110</b>	<b>12</b>	<b>71</b>	<b>59</b>	<b>46</b>	<b>31</b>	<b>1223</b>	<b>39</b>	<b>180</b>	<b>14</b>	<b>943</b>	<b>703</b>	<b>72</b>	<b>450</b>	<b>3</b>	<b>111</b>	<b>343</b>	<b>82</b>	<b>218</b>	<b>8</b>