



STATE OF WASHINGTON
DEPARTMENT OF LICENSING
PO Box 9035 • Olympia, Washington 98507-9035

June 3, 2009

Washington State Drivers Report for May 2009

The monthly report for May 2009 tabulates Washington drivers' license (WDL) activity. The table below summarizes WDL migration in and out of Washington State. It also identifies the top three in-migration states. This data generates a net increase series. The reported month of surrendered WDLs is a reflection of the month Washington received the information and not when the driver left Washington. Therefore, the net increase is an estimate of net migration. Beginning with the April 1998 data, this report and supporting documentation are available via e-mail at the address below. Our formats are PDF for the report and Excel for the data files.

During the month of May (April 25, 2009 to May 30, 2009), a total of 13,172 out-of-state drivers obtained a Washington driver license. This is 1,041 more than the 12,131 who obtained licenses in May of 2008 (April 26, 2008 to May 31, 2008). Net migration to Washington for May 2009 was 9,566 drivers, compared to 8,425 the same month last year. For the 12 months ending May 2009, 138,101 out-of-state drivers obtained a Washington driver license, a decrease over the same period a year ago of 1 percent.

The table below displays data using a 12-month moving sum to help smooth out the monthly variance and reveal the trend. The graphs on the attached file display the results of this smoothing. The first graph plots new drivers moving into Washington as well as the net increase.

	May 2009			Year Ending May 2009		
	2008	2009	% Change	2008	2009	% Change
Total Drivers In	12,131	13,172	8.6	139,453	138,101	-1.0
California	2,385	2,359	-1.1	27,543	26,461	-3.9
Oregon	1,539	2,066	34.2	17,512	18,943	8.2
Texas	542	592	9.2	6,656	6,222	-6.5
Returned WDL*	3,706	3,606	-2.7	67,560	64,625	-4.3
Net Increase	8,425	9,566	13.5	71,893	73,476	2.2

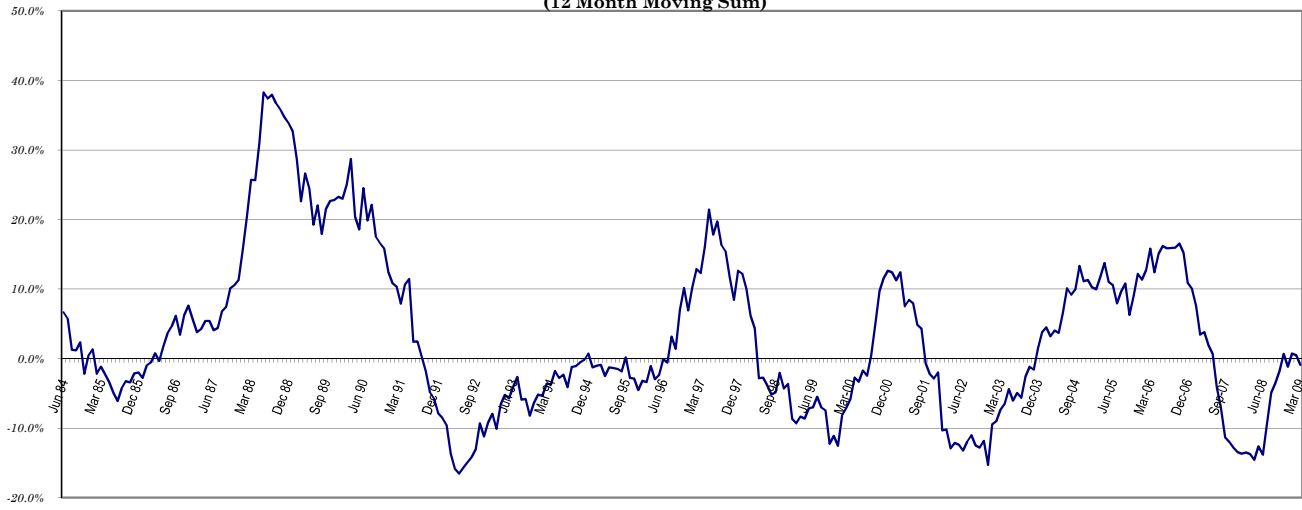
* Reliability of the surrendered license data is limited due to incomplete reporting (e.g. California only reports commercial driver licenses surrendered) as well as delays in the notification process by other jurisdictions.

Alice Vogel, Economic Analyst
Department of Licensing
Office of Budget and Economic Analysis
Highways and Licensing Building
Olympia, WA 98501-48018
(360) 902-3986
FAX: (360) 753-7500
E-Mail: avogel@dol.wa.gov

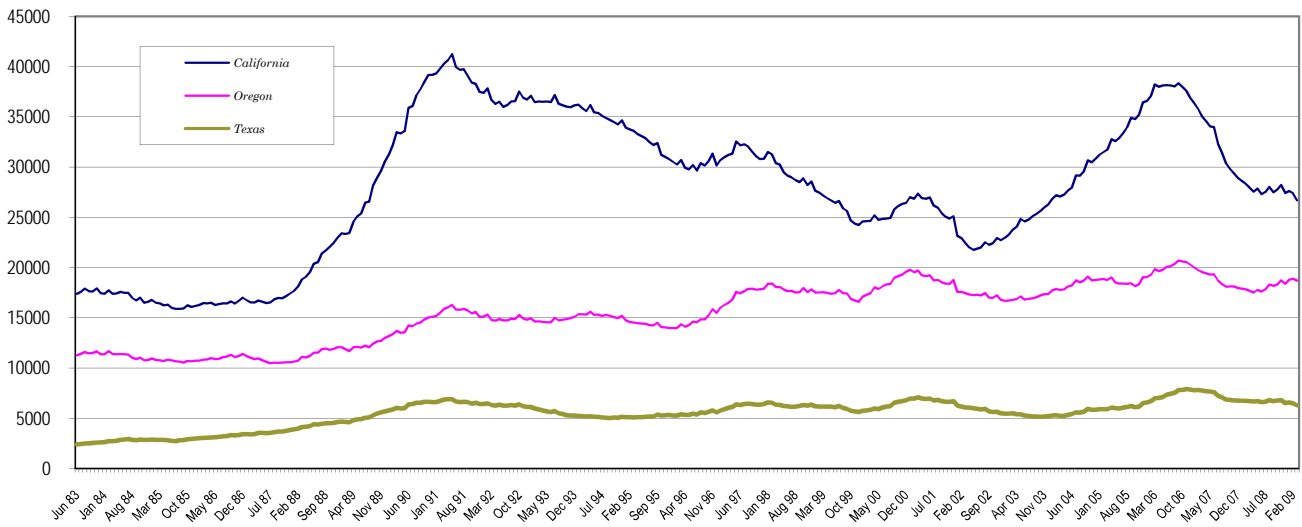
**Washington State Driver's Licenses
(12 Month Moving Sum)**



**% Change Year Ago
(12 Month Moving Sum)**



**Largest States
(12 Months Moving Sum)**



Net Increase States

Month: **May 2009**

State	IN	OUT	Net in Migration
ALABAMA	51	27	24
ALASKA	271	153	118
ARIZONA	620	0	620
ARKANSAS	62	0	62
CALIFORNIA	2359	6	2,353
COLORADO	315	197	118
CONNECTICUT	53	0	53
DELAWARE	17	6	11
FLORIDA	455	52	403
GEORGIA	257	89	168
HAWAII	237	169	68
IDAHO	552	500	52
ILLINOIS	278	127	151
INDIANA	113	48	65
IOWA	83	90	(7)
KANSAS	117	123	(6)
KENTUCKY	55	40	15
LOUISIANA	74	47	27
MAINE	42	5	37
MARYLAND	100	245	(145)
MASSACHUSETTS	84	0	84
MICHIGAN	367	43	324
MINNESOTA	165	40	125
MISSISSIPPI	31	20	11
MISSOURI	141	87	54
MONTANA	281	158	123
NEBRASKA	52	0	52
NEVADA	340	12	328
NEW HAMPSHIRE	26	0	26
NEW JERSEY	122	39	83
NEW MEXICO	87	25	62
NEW YORK	214	208	6
NORTH CAROLINA	312	89	223
NORTH DAKOTA	36	37	(1)
OHIO	152	63	89
OKLAHOMA	93	53	40
OREGON	2066	63	2,003
PENNSYLVANIA	167	1	166
RHODE ISLAND	18	0	18
SOUTH CAROLINA	80	64	16
SOUTH DAKOTA	47	26	21
TENNESSEE	158	0	158
TEXAS	592	0	592
UTAH	248	217	31
VERMONT	17	17	0
VIRGINIA	208	133	75
WASHINGTON	9	0	9
WEST VIRGINIA	22	19	3
WISCONSIN	165	52	113
WYOMING	60	102	(42)
WASH. DC	30	63	(33)
OUTSIDE U.S.	671	51	620
TOTAL	13,172	3,606	9,566

May 2009 Totals by Location Moved From, and By County Moved To

FROM / TO	TOTAL	GRAYS																			
		ADAMS	ASOTIN	BENTON	CHELAN	CLALLAM	CLARK	COLUMBIA	COWLITZ	DOUGLAS	FERRY	FRANKLIN	GARFIELD	GRANT	HARBOR	ISLAND	JEFFERSON	KING	KITSAP	KITTITAS	KLCKITAT
ALABAMA	51	0	0	0	0	2	2	0	0	0	0	0	2	2	1	3	16	5	0	0	
ALASKA	271	1	1	4	2	10	14	0	5	1	1	1	0	3	1	15	0	75	4	1	0
ARIZONA	620	2	1	11	2	7	38	0	7	3	0	2	0	12	6	12	7	205	40	1	2
ARKANSAS	62	0	0	2	0	1	4	0	1	0	0	0	0	3	0	0	0	24	4	0	0
CALIFORNIA	2359	3	5	36	19	38	143	2	25	8	2	18	0	18	13	55	24	855	111	12	1
COLORADO	315	0	0	10	1	3	16	0	1	1	0	2	0	6	6	6	2	106	14	1	2
CONNECTICUT	53	0	0	0	0	0	1	0	0	0	0	1	0	0	0	2	1	27	6	0	1
DELAWARE	17	0	0	2	0	1	0	0	0	0	0	0	0	0	0	1	0	6	0	0	0
FLORIDA	455	0	0	15	2	8	15	0	5	1	0	6	0	0	0	14	3	205	26	1	1
GEORGIA	257	0	0	0	3	4	10	0	3	0	0	1	0	1	2	5	0	118	10	0	1
HAWAII	237	0	0	6	0	3	13	0	2	0	0	1	0	1	0	9	2	84	18	0	0
IDAHO	552	1	40	41	8	6	20	0	7	0	1	6	1	18	4	8	2	65	19	2	0
ILLINOIS	278	0	0	8	6	0	6	0	1	0	1	0	0	5	2	6	1	124	18	0	0
INDIANA	113	0	0	4	1	0	10	0	0	0	0	0	0	0	2	4	2	36	9	2	2
IOWA	83	0	0	5	2	0	0	0	0	0	0	2	0	0	0	1	0	41	6	0	0
KANSAS	117	1	1	2	0	1	11	0	2	0	0	0	0	0	0	4	0	37	7	1	0
KENTUCKY	55	0	0	3	0	1	3	0	1	0	0	2	0	0	0	0	2	9	2	0	0
LOUISIANA	74	0	0	3	0	0	2	0	4	1	0	0	0	0	3	2	0	24	4	0	0
MAINE	42	0	0	0	0	0	2	0	0	0	0	0	0	0	0	2	0	13	1	0	0
MARYLAND	100	0	0	0	0	0	5	0	0	0	1	1	0	0	0	5	0	44	2	0	2
MASSACHUSETTS	84	0	0	3	0	0	2	0	2	0	0	0	0	0	1	0	1	49	2	0	2
MICHIGAN	367	0	2	13	3	3	15	0	2	1	0	4	0	4	1	2	2	187	11	1	0
MINNESOTA	165	0	0	2	0	2	5	0	0	0	0	2	0	0	0	3	1	77	5	1	0
MISSISSIPPI	31	1	0	0	0	0	1	0	0	0	0	0	0	0	0	0	0	11	3	0	0
MISSOURI	141	0	0	2	3	0	6	0	3	0	0	2	0	1	1	1	1	47	8	0	0
MONTANA	281	0	1	3	2	4	15	0	1	2	4	0	0	5	2	3	0	82	9	7	2
NEBRASKA	52	0	0	3	0	0	2	0	0	1	0	1	0	3	2	1	0	14	1	0	0
NEVADA	340	0	2	18	2	2	18	0	4	1	0	8	0	1	3	5	2	118	17	1	1
NEW HAMPSHIRE	26	0	0	0	0	0	2	0	0	0	0	0	0	0	0	0	0	18	1	0	0
NEW JERSEY	122	0	0	0	0	1	4	0	1	0	0	0	0	0	1	1	2	57	9	2	0
NEW MEXICO	87	1	0	2	1	4	1	0	0	0	0	0	0	0	3	1	1	32	6	0	0
NEW YORK	214	0	0	6	0	0	6	0	2	0	0	1	0	2	2	6	0	119	6	0	0
NORTH CAROLINA	312	0	1	5	3	0	12	0	0	1	0	7	0	2	2	3	2	149	14	1	0
NORTH DAKOTA	36	0	0	2	0	0	0	0	0	0	0	0	0	2	0	0	0	5	3	0	0
OHIO	152	0	2	4	0	0	7	0	0	0	0	1	0	0	2	3	0	68	6	0	2
OKLAHOMA	93	0	0	3	1	0	5	0	0	0	0	0	0	2	2	3	0	27	6	0	1
OREGON	2066	1	10	86	12	20	668	3	70	5	5	41	1	40	20	17	7	295	44	8	29
PENNSYLVANIA	167	0	0	2	0	2	10	1	0	0	0	2	0	1	0	5	4	62	9	3	2
RHODE ISLAND	18	0	0	0	0	0	0	0	0	0	0	0	0	0	0	0	0	16	0	0	0
SOUTH CAROLINA	80	0	0	4	0	1	4	0	1	0	0	0	0	0	1	0	0	26	8	0	2
SOUTH DAKOTA	47	0	0	2	0	1	4	0	2	0	0	0	0	2	2	1	0	9	8	0	0
TENNESSEE	158	0	0	8	1	3	12	0	1	4	0	0	0	4	1	1	0	56	13	0	0
TEXAS	592	2	0	10	3	6	31	0	2	1	0	6	0	5	3	15	5	193	48	5	0
UTAH	248	1	0	11	0	2	16	0	0	0	2	6	0	2	0	4	1	81	6	3	2
VERMONT	17	0	0	0	0	0	1	0	0	0	0	0	0	0	0	1	0	9	1	0	0
VIRGINIA	208	0	0	4	1	1	4	0	1	0	0	0	0	0	0	13	0	77	19	0	1
WASHINGTON	9	0	0	0	0	0	8	0	0	0	0	0	0	0	0	0	0	0	0	0	0
WEST VIRGINIA	22	0	0	3	0	1	0	0	0	0	0	0	0	0	0	0	0	4	1	0	0
WISCONSIN	165	0	0	5	2	2	4	0	1	0	0	3	0	5	3	3	2	61	8	0	1
WYOMING	60	0	0	3	0	5	1	0	3	3	0	0	0	1	0	0	1	15	3	0	0
WASHINGTON D.C.	30	0	0	0	0	0	0	0	0	0	0	0	0	0	0	0	2	23	0	0	0
ARGENTINA	0	0	0	0	0	0	0	0	0	0	0	0	0	0	0	0	0	0	0	0	0
BELIZE (BRIT HONDU)	0	0	0	0	0	0	0	0	0	0	0	0	0	0	0	0	0	0	0	0	0
BOLIVIA	0	0	0	0	0	0	0	0	0	0	0	0	0	0	0	0	0	0	0	0	0

May 2009 Totals by Location Moved From, and By County Moved To

FROM / TO	TOTAL	GRAYS																			
		ADAMS	ASOTIN	BENTON	CHELAN	CLALLAM	CLARK	COLUMBIA	COWLITZ	DOUGLAS	FERRY	FRANKLIN	GARFIELD	GRANT	HARBOR	ISLAND	JEFFERSON	KING	KITSAP	KITTITAS	KLCKITAT
BRAZIL	36	0	0	0	0	0	0	0	5	0	0	0	0	0	0	1	0	28	0	0	0
CHILE	2	0	0	0	0	0	1	0	0	0	0	0	0	0	0	0	0	1	0	0	0
CANAL ZONE	0	0	0	0	0	0	0	0	0	0	0	0	0	0	0	0	0	0	0	0	0
COLUMBIA	0	0	0	0	0	0	0	0	0	0	0	0	0	0	0	0	0	0	0	0	0
COSTA RICA	1	0	0	0	0	0	0	0	0	0	0	0	0	0	0	0	1	0	0	0	0
EL SALVADOR	7	0	0	0	0	0	0	0	0	0	0	0	0	0	0	0	0	0	0	0	0
EQUADOR	2	0	0	0	0	0	0	0	0	0	0	0	0	0	0	0	1	0	0	0	0
GUYANA	0	0	0	0	0	0	0	0	0	0	0	0	0	0	0	0	0	0	0	0	0
NICARAGUA	0	0	0	0	0	0	0	0	0	0	0	0	0	0	0	0	0	0	0	0	0
PANAMA	0	0	0	0	0	0	0	0	0	0	0	0	0	0	0	0	0	0	0	0	0
PERU	1	0	0	0	0	0	0	0	0	0	0	0	0	0	0	0	1	0	0	0	0
PARAGUAY	0	0	0	0	0	0	0	0	0	0	0	0	0	0	0	0	0	0	0	0	0
SURINAM	0	0	0	0	0	0	0	0	0	0	0	0	0	0	0	0	0	0	0	0	0
TRINIDAD	0	0	0	0	0	0	0	0	0	0	0	0	0	0	0	0	0	0	0	0	0
UPPER VOLTA	0	0	0	0	0	0	0	0	0	0	0	0	0	0	0	0	0	0	0	0	0
URUGUAY	0	0	0	0	0	0	0	0	0	0	0	0	0	0	0	0	0	0	0	0	0
VENEZUELA	0	0	0	0	0	0	0	0	0	0	0	0	0	0	0	0	0	0	0	0	0
ALGERIA	0	0	0	0	0	0	0	0	0	0	0	0	0	0	0	0	0	0	0	0	0
ANGOLA	0	0	0	0	0	0	0	0	0	0	0	0	0	0	0	0	0	0	0	0	0
CAMERON	0	0	0	0	0	0	0	0	0	0	0	0	0	0	0	0	0	0	0	0	0
CHAD	0	0	0	0	0	0	0	0	0	0	0	0	0	0	0	0	0	0	0	0	0
CONGO	0	0	0	0	0	0	0	0	0	0	0	0	0	0	0	0	0	0	0	0	0
C. AFRICAN REP.	0	0	0	0	0	0	0	0	0	0	0	0	0	0	0	0	0	0	0	0	0
BOTSWANA	0	0	0	0	0	0	0	0	0	0	0	0	0	0	0	0	0	0	0	0	0
BURUNDI	0	0	0	0	0	0	0	0	0	0	0	0	0	0	0	0	0	0	0	0	0
DAHOMEY	0	0	0	0	0	0	0	0	0	0	0	0	0	0	0	0	0	0	0	0	0
EQ. GUINEA	0	0	0	0	0	0	0	0	0	0	0	0	0	0	0	0	0	0	0	0	0
EGYPT	0	0	0	0	0	0	0	0	0	0	0	0	0	0	0	0	0	0	0	0	0
ETHIOPIA	0	0	0	0	0	0	0	0	0	0	0	0	0	0	0	0	0	0	0	0	0
GABON	0	0	0	0	0	0	0	0	0	0	0	0	0	0	0	0	0	0	0	0	0
GAMBIA	1	0	0	0	0	0	0	0	0	0	0	0	0	0	0	0	0	0	0	0	0
GHANA	0	0	0	0	0	0	0	0	0	0	0	0	0	0	0	0	0	0	0	0	0
GUINEA	0	0	0	0	0	0	0	0	0	0	0	0	0	0	0	0	0	0	0	0	0
IVORY COAST	0	0	0	0	0	0	0	0	0	0	0	0	0	0	0	0	0	0	0	0	0
KENYA	2	0	0	0	0	0	0	0	0	0	0	0	0	0	0	0	1	0	0	0	0
LIBYA	1	0	0	0	0	0	0	0	0	0	0	0	0	0	0	0	0	0	0	0	0
LIBERIA	0	0	0	0	0	0	0	0	0	0	0	0	0	0	0	0	0	0	0	0	0
MALAWI	0	0	0	0	0	0	0	0	0	0	0	0	0	0	0	0	0	0	0	0	0
MALAGASY	0	0	0	0	0	0	0	0	0	0	0	0	0	0	0	0	0	0	0	0	0
MORROCCO	1	0	0	0	0	0	0	0	0	0	0	0	0	0	0	0	1	0	0	0	0
MAURITANIA	0	0	0	0	0	0	0	0	0	0	0	0	0	0	0	0	0	0	0	0	0
MALI	0	0	0	0	0	0	0	0	0	0	0	0	0	0	0	0	0	0	0	0	0
NIGER	0	0	0	0	0	0	0	0	0	0	0	0	0	0	0	0	0	0	0	0	0
NIGERIA	2	0	0	0	0	0	0	0	0	0	0	0	0	0	0	0	2	0	0	0	0
RHODESIA	0	0	0	0	0	0	0	0	0	0	0	0	0	0	0	0	0	0	0	0	0
RWANDA	0	0	0	0	0	0	0	0	0	0	0	0	0	0	0	0	0	0	0	0	0
SOUTH AFRICA	0	0	0	0	0	0	0	0	0	0	0	0	0	0	0	0	0	0	0	0	0
SOUTH WEST AFRICA	0	0	0	0	0	0	0	0	0	0	0	0	0	0	0	0	0	0	0	0	0
SIERRA LEONE	0	0	0	0	0	0	0	0	0	0	0	0	0	0	0	0	0	0	0	0	0
SWAZILAND	0	0	0	0	0	0	0	0	0	0	0	0	0	0	0	0	0	0	0	0	0
SENEGAL	0	0	0	0	0	0	0	0	0	0	0	0	0	0	0	0	0	0	0	0	0
SOMALI REPUBLIC	0	0	0	0	0	0	0	0	0	0	0	0	0	0	0	0	0	0	0	0	0
SUDAN	0	0	0	0	0	0	0	0	0	0	0	0	0	0	0	0	0	0	0	0	0
TOGO	0	0	0	0	0	0	0	0	0	0	0	0	0	0	0	0	0	0	0	0	0
TUNISIA	0	0	0	0	0	0	0	0	0	0	0	0	0	0	0	0	0	0	0	0	0
TANZANIA	0	0	0	0	0	0	0	0	0	0	0	0	0	0	0	0	0	0	0	0	0

May 2009 Totals by Location Moved From, and By County Moved To

FROM / TO	TOTAL	GRAYS																			
		ADAMS	ASOTIN	BENTON	CHELAN	CLALLAM	CLARK	COLUMBIA	COWLITZ	DOUGLAS	FERRY	FRANKLIN	GARFIELD	GRANT	HARBOR	ISLAND	JEFFERSON	KING	KITSAP	KITTITAS	KLCKITAT
UGANDA	0	0	0	0	0	0	0	0	0	0	0	0	0	0	0	0	0	0	0	0	0
ZAIRE	0	0	0	0	0	0	0	0	0	0	0	0	0	0	0	0	0	0	0	0	0
AFGHANISTAN	0	0	0	0	0	0	0	0	0	0	0	0	0	0	0	0	0	0	0	0	0
BANGLADESH	0	0	0	0	0	0	0	0	0	0	0	0	0	0	0	0	0	0	0	0	0
BHUTAN	0	0	0	0	0	0	0	0	0	0	0	0	0	0	0	0	0	0	0	0	0
BURMA	0	0	0	0	0	0	0	0	0	0	0	0	0	0	0	0	0	0	0	0	0
BAHRAIN	0	0	0	0	0	0	0	0	0	0	0	0	0	0	0	0	0	0	0	0	0
CEYLON (SRI LANKA)	0	0	0	0	0	0	0	0	0	0	0	0	0	0	0	0	0	0	0	0	0
CHINA	10	0	0	0	0	0	0	0	0	1	0	0	0	0	0	0	0	6	0	0	0
CAMBODIA	0	0	0	0	0	0	0	0	0	0	0	0	0	0	0	0	0	0	0	0	0
CYPRUS	0	0	0	0	0	0	0	0	0	0	0	0	0	0	0	0	0	0	0	0	0
JORDAN	0	0	0	0	0	0	0	0	0	0	0	0	0	0	0	0	0	0	0	0	0
JAPAN	11	0	0	0	0	0	0	0	0	0	0	0	0	0	0	0	0	7	0	0	0
KUWAIT	0	0	0	0	0	0	0	0	0	0	0	0	0	0	0	0	0	0	0	0	0
IRAN	0	0	0	0	0	0	0	0	0	0	0	0	0	0	0	0	0	0	0	0	0
ISRAEL	0	0	0	0	0	0	0	0	0	0	0	0	0	0	0	0	0	0	0	0	0
INDIA	23	0	0	0	0	0	1	0	0	0	0	0	0	0	0	0	0	20	0	0	0
IRAQ	0	0	0	0	0	0	0	0	0	0	0	0	0	0	0	0	0	0	0	0	0
INDONESIA	0	0	0	0	0	0	0	0	0	0	0	0	0	0	0	0	0	0	0	0	0
KOREA	33	0	0	0	0	0	0	0	0	0	0	0	0	0	0	0	0	9	0	0	0
LAOS	1	0	0	0	0	0	0	0	0	0	0	0	0	0	0	0	0	0	0	0	0
LEBANON	0	0	0	0	0	0	0	0	0	0	0	0	0	0	0	0	0	0	0	0	0
MALAYSIA	0	0	0	0	0	0	0	0	0	0	0	0	0	0	0	0	0	0	0	0	0
MONGOLIA	0	0	0	0	0	0	0	0	0	0	0	0	0	0	0	0	0	0	0	0	0
NEPAL	1	0	0	0	0	0	0	0	0	0	0	0	0	0	0	0	0	1	0	0	0
OMAN	0	0	0	0	0	0	0	0	0	0	0	0	0	0	0	0	0	0	0	0	0
PAKISTAN	0	0	0	0	0	0	0	0	0	0	0	0	0	0	0	0	0	0	0	0	0
QATAR	0	0	0	0	0	0	0	0	0	0	0	0	0	0	0	0	0	0	0	0	0
SIKKIM	0	0	0	0	0	0	0	0	0	0	0	0	0	0	0	0	0	0	0	0	0
SYRIA	0	0	0	0	0	0	0	0	0	0	0	0	0	0	0	0	0	0	0	0	0
SAUDI ARABIA	0	0	0	0	0	0	0	0	0	0	0	0	0	0	0	0	0	0	0	0	0
SINGAPORE	0	0	0	0	0	0	0	0	0	0	0	0	0	0	0	0	0	0	0	0	0
TAIWAN	1	0	0	0	0	0	0	0	0	0	0	0	0	0	0	0	0	0	0	0	0
THAILAND	0	0	0	0	0	0	0	0	0	0	0	0	0	0	0	0	0	0	0	0	0
TURKEY	0	0	0	0	0	0	0	0	0	0	0	0	0	0	0	0	0	0	0	0	0
USSR	2	0	0	0	0	0	1	0	0	0	0	0	0	0	0	0	0	1	0	0	0
UNITED ARAB EMIRATE	0	0	0	0	0	0	0	0	0	0	0	0	0	0	0	0	0	0	0	0	0
VIETNAM	0	0	0	0	0	0	0	0	0	0	0	0	0	0	0	0	0	0	0	0	0
YEMEN	0	0	0	0	0	0	0	0	0	0	0	0	0	0	0	0	0	0	0	0	0
AUSTRIA	1	0	0	0	0	0	1	0	0	0	0	0	0	0	0	0	0	0	0	0	0
BULGARIA	2	0	0	0	0	0	0	0	0	0	0	0	0	0	0	0	0	0	0	0	0
BELGIUM	2	0	0	0	0	0	0	0	0	0	0	0	0	0	0	0	0	2	0	0	0
DENMARK	3	0	0	0	0	0	0	0	0	0	0	0	0	0	0	0	0	3	0	0	0
ENGLAND	10	0	0	0	0	0	0	0	0	0	0	0	0	0	0	0	0	10	0	0	0
FRANCE	3	0	0	0	0	0	0	0	0	0	0	0	0	0	0	0	0	3	0	0	0
FINLAND	0	0	0	0	0	0	0	0	0	0	0	0	0	0	0	0	0	0	0	0	0
CZECHOSLAVAKIA	0	0	0	0	0	0	0	0	0	0	0	0	0	0	0	0	0	0	0	0	0
GREECE	0	0	0	0	0	0	0	0	0	0	0	0	0	0	0	0	0	0	0	0	0
GERMANY	22	0	0	0	0	1	1	0	0	0	0	0	0	0	0	0	0	15	0	0	0
IRELAND	4	0	0	0	0	0	0	0	0	0	0	0	0	0	0	0	0	4	0	0	0
ITALY	4	0	0	0	0	0	0	0	0	0	0	0	0	0	0	0	0	3	0	0	0
HUNGARY	1	0	0	0	0	0	0	0	0	0	0	0	0	0	0	0	0	1	0	0	0
LUXEMBOURG	0	0	0	0	0	0	0	0	0	0	0	0	0	0	0	0	0	0	0	0	0
NETHERLANDS	1	0	0	0	0	0	0	0	0	0	0	0	0	0	0	0	0	1	0	0	0
NORWAY	1	0	0	0	0	0	0	0	0	0	0	0	0	0	0	0	0	0	0	0	0
POLAND	2	0	0	0	0	0	0	0	0	0	0	0	0	0	0	0	0	2	0	0	0

May 2009 Totals by Location Moved From, and By County Moved To

FROM / TO	TOTAL	GRAYS																			
		ADAMS	ASOTIN	BENTON	CHELAN	CLALLAM	CLARK	COLUMBIA	COWLITZ	DOUGLAS	FERRY	FRANKLIN	GARFIELD	GRANT	HARBOR	ISLAND	JEFFERSON	KING	KITSAP	KITTITAS	KLCKITAT
SPAIN	0	0	0	0	0	0	0	0	0	0	0	0	0	0	0	0	0	0	0	0	0
SWITZERLAND	0	0	0	0	0	0	0	0	0	0	0	0	0	0	0	0	0	0	0	0	0
SWEDEN	1	0	0	0	0	0	0	0	0	0	0	0	0	0	0	0	0	1	0	0	0
ROMANIA	3	0	0	0	0	0	0	0	0	0	0	0	0	0	0	0	0	3	0	0	0
YUGOSLAVIA	0	0	0	0	0	0	0	0	0	0	0	0	0	0	0	0	0	0	0	0	0
ALBANIA	0	0	0	0	0	0	0	0	0	0	0	0	0	0	0	0	0	0	0	0	0
ANDORRA	0	0	0	0	0	0	0	0	0	0	0	0	0	0	0	0	0	0	0	0	0
AMERICAN SAMOA	22	0	0	0	0	0	0	0	0	0	0	0	0	0	0	0	1	13	0	0	0
BORNEO	0	0	0	0	0	0	0	0	0	0	0	0	0	0	0	0	0	0	0	0	0
CUBA	0	0	0	0	0	0	0	0	0	0	0	0	0	0	0	0	0	0	0	0	0
BERMUDA	0	0	0	0	0	0	0	0	0	0	0	0	0	0	0	0	0	0	0	0	0
DOMINICAN REPUBLIC	0	0	0	0	0	0	0	0	0	0	0	0	0	0	0	0	0	0	0	0	0
FIJI	0	0	0	0	0	0	0	0	0	0	0	0	0	0	0	0	0	0	0	0	0
GUAM	31	0	0	0	0	0	3	0	1	0	0	0	0	0	3	0	11	4	0	0	0
HAITI	0	0	0	0	0	0	0	0	0	0	0	0	0	0	0	0	0	0	0	0	0
JAMAICA	1	0	0	0	0	0	0	0	0	0	0	0	0	0	0	0	0	0	0	0	0
NEW ZEALAND	3	0	0	0	0	0	0	0	0	0	0	0	0	0	2	0	1	0	0	0	0
PORTUGAL	1	0	0	0	0	0	0	0	0	0	0	0	0	0	0	0	1	0	0	0	0
PHILIPPINES	9	0	0	0	0	0	0	0	0	0	0	0	0	0	0	0	5	2	0	0	0
PUERTO RICO	9	0	0	0	0	0	1	0	0	0	0	0	0	0	2	0	2	1	0	0	0
TAHITI	0	0	0	0	0	0	0	0	0	0	0	0	0	0	0	0	0	0	0	0	0
TONGA	0	0	0	0	0	0	0	0	0	0	0	0	0	0	0	0	0	0	0	0	0
VIRGIN ISLANDS	3	0	0	0	0	0	0	0	0	0	0	0	0	0	0	0	1	0	0	0	0
WEST SAMOA	0	0	0	0	0	0	0	0	0	0	0	0	0	0	0	0	0	0	0	0	0
AUSTRALIA	11	0	0	0	0	0	0	0	0	0	0	0	0	0	0	0	4	0	0	0	0
ANTARTICA	0	0	0	0	0	0	0	0	0	0	0	0	0	0	0	0	0	0	0	0	0
ICELAND	0	0	0	0	0	0	0	0	0	0	0	0	0	0	0	0	0	0	0	0	0
GREENLAND	0	0	0	0	0	0	0	0	0	0	0	0	0	0	0	0	0	0	0	0	0
MEXICO	138	1	0	4	3	0	12	0	0	8	0	11	0	3	0	0	39	0	1	0	0
ALBERTA	18	0	0	2	0	0	0	0	0	0	0	0	0	0	0	0	7	0	0	0	0
BRITISH COLUMBIA	80	0	0	1	1	1	2	0	0	0	0	0	0	0	0	0	37	0	0	0	0
MANITOBA	0	0	0	0	0	0	0	0	0	0	0	0	0	0	0	0	0	0	0	0	0
NEW BRUNSWICK	0	0	0	0	0	0	0	0	0	0	0	0	0	0	0	0	0	0	0	0	0
NEWFOUNDLAND	0	0	0	0	0	0	0	0	0	0	0	0	0	0	0	0	0	0	0	0	0
NOVA SCOTIA	2	0	0	0	0	0	0	0	0	0	0	0	0	0	0	0	2	0	0	0	0
ONTARIO	40	0	0	3	1	0	0	0	0	0	0	0	0	0	0	0	24	0	0	0	0
PRINCE EDWARD IS.	0	0	0	0	0	0	0	0	0	0	0	0	0	0	0	0	0	0	0	0	0
QUEBEC	5	0	0	0	0	0	0	0	0	0	0	0	0	0	0	0	5	0	0	0	0
SASKATCHEWAN	1	0	0	0	0	0	0	0	0	0	0	0	0	0	0	0	0	0	0	0	0
NORTHWEST TERRITORY	2	0	0	0	0	0	0	0	0	0	0	0	0	0	0	0	0	0	0	0	0
YUKON TERRITORY	0	0	0	0	0	0	0	0	0	0	0	0	0	0	0	0	0	0	0	0	0
UNKNOWN	97	0	0	1	0	0	10	0	0	0	0	0	2	0	1	0	48	1	0	0	0
** TOTAL **	13172	15	66	367	85	147	1212	6	166	43	17	138	2	156	93	253	84	4429	589	54	57

May 2009 Totals by Location Moved From, and By County Moved To

FROM / TO	PEND																SAN				WALLA				
	LEWIS	LINCOLN	MASON	OKANAGON	PACIFIC	OREILLE	PIERCE	JUAN	SKAGIT	SKAMANIA	SNOHOMISH	SPOKANE	STEVENS	THURSTON	WAHAKIAKUM	WALLA	WHATCOM	WHITMAN	YAKIMA	UNKNOWN					
ALABAMA	0	0	2	0	0	0	11	0	0	0	1	0	0	1	0	0	3	0	0	0					
ALASKA	2	0	5	0	1	3	25	2	3	1	17	27	4	15	0	2	12	5	8	0					
ARIZONA	8	0	1	5	4	1	48	1	7	2	45	52	7	24	0	6	29	7	14	1					
ARKANSAS	0	0	0	0	0	0	5	0	0	0	4	5	0	2	0	0	0	1	5	1					
CALIFORNIA	21	4	19	3	14	4	260	2	26	4	220	137	20	95	1	7	69	5	60	0					
COLORADO	3	0	0	4	2	0	39	3	9	0	16	20	1	14	0	1	13	3	10	0					
CONNECTICUT	0	0	0	0	0	0	6	0	0	0	2	2	0	4	0	0	0	0	0	0					
DELAWARE	0	0	0	0	0	0	3	0	0	0	0	1	0	2	0	0	1	0	0	0					
FLORIDA	3	0	2	5	1	0	34	1	3	0	35	20	1	17	0	1	21	1	6	2					
GEORGIA	0	0	0	0	0	0	48	4	2	0	17	8	0	7	0	0	11	1	1	0					
HAWAII	4	0	1	0	0	0	40	0	5	1	15	7	0	13	0	0	6	5	1	0					
IDAHO	10	2	6	2	0	4	30	1	7	0	28	112	13	15	1	17	20	20	13	2					
ILLINOIS	2	0	0	0	0	0	33	0	2	0	19	17	0	18	0	0	7	0	2	0					
INDIANA	1	0	0	0	0	1	17	0	0	0	8	7	0	5	0	0	0	0	2	0					
IOWA	0	1	0	0	0	0	8	1	0	0	5	6	0	2	0	0	3	0	0	0					
KANSAS	0	0	0	2	0	0	14	0	1	0	13	6	0	6	0	6	1	1	0	0					
KENTUCKY	0	0	1	0	0	0	18	2	0	0	2	1	1	4	0	0	2	1	0	0					
LOUISIANA	1	0	0	0	0	0	5	0	3	0	5	7	0	7	0	0	2	1	0	0					
MAINE	0	0	0	0	0	0	4	0	4	0	2	3	1	4	0	0	5	0	1	0					
MARYLAND	0	0	4	1	1	0	10	1	0	0	4	6	1	6	0	0	2	3	1	0					
MASSACHUSETTS	0	0	0	0	0	0	12	0	1	0	2	3	0	3	0	0	1	0	0	0					
MICHIGAN	4	0	0	0	1	0	36	0	6	0	28	12	4	6	0	1	11	5	2	0					
MINNESOTA	4	1	3	0	1	0	18	1	2	0	14	11	1	4	0	1	3	1	2	0					
MISSISSIPPI	0	0	0	0	1	0	5	0	1	1	2	1	0	1	0	0	2	0	1	0					
MISSOURI	2	0	1	0	1	0	23	0	1	0	18	2	0	8	0	0	1	3	6	0					
MONTANA	1	2	3	3	1	0	24	0	4	0	22	42	6	13	0	5	7	2	4	0					
NEBRASKA	0	0	1	0	0	0	7	0	0	0	5	2	1	1	0	3	3	1	0	0					
NEVADA	15	0	2	2	2	1	23	0	1	1	25	24	4	12	0	1	14	2	8	0					
NEW HAMPSHIRE	0	0	0	0	0	0	2	0	0	0	2	1	0	0	0	0	0	0	0	0					
NEW JERSEY	1	0	0	0	0	0	19	1	0	0	11	3	2	4	0	0	0	0	3	0					
NEW MEXICO	0	0	1	0	0	1	10	0	1	0	5	5	1	4	0	0	3	4	0	0					
NEW YORK	0	0	0	1	0	0	17	0	4	0	14	9	1	10	0	0	2	2	4	0					
NORTH CAROLINA	8	0	0	0	2	4	35	1	3	0	16	8	0	21	1	1	5	0	5	0					
NORTH DAKOTA	0	0	2	0	0	0	4	0	0	0	2	4	0	7	0	0	1	3	0	1					
OHIO	1	0	0	0	0	0	23	1	2	0	6	7	0	5	0	1	9	0	2	0					
OKLAHOMA	1	0	0	0	1	0	16	0	0	0	9	2	0	4	0	0	7	0	3	0					
OREGON	45	4	13	12	21	2	121	2	34	8	92	78	8	44	2	49	38	7	102	2					
PENNSYLVANIA	0	0	2	1	0	0	20	2	2	0	10	5	0	11	0	2	4	1	4	0					
RHODE ISLAND	0	0	0	0	0	0	1	0	0	0	0	0	0	1	0	0	0	0	0	0					
SOUTH CAROLINA	0	0	2	0	0	1	9	2	1	0	6	5	1	4	0	0	2	0	0	0					
SOUTH DAKOTA	1	0	0	1	0	0	5	0	0	0	2	2	0	2	0	0	2	1	0	0					
TENNESSEE	1	0	0	0	2	0	25	2	3	0	7	1	0	5	0	0	2	1	5	0					
TEXAS	2	0	2	1	4	0	104	0	2	1	52	16	4	25	0	5	30	1	8	0					
UTAH	1	0	2	5	2	0	32	2	4	0	19	17	1	14	0	0	2	0	10	0					
VERMONT	0	0	0	0	0	0	2	0	0	0	2	0	0	1	0	0	0	0	0	0					
VIRGINIA	0	0	0	0	0	0	36	0	5	0	17	4	0	17	0	0	3	1	3	1					
WASHINGTON	0	0	0	0	0	0	0	0	1	0	0	0	0	0	0	0	0	0	0	0					
WEST VIRGINIA	0	0	0	1	0	0	2	0	0	0	1	2	2	1	0	4	0	0	0	0					
WISCONSIN	2	0	0	0	0	0	19	0	2	0	13	9	0	9	0	0	5	3	3	0					
WYOMING	0	1	0	0	0	0	2	1	0	0	4	10	0	3	2	0	1	1	0	0					
WASHINGTON D.C.	0	0	0	0	0	0	1	0	0	0	3	0	0	1	0	0	0	0	0	0					
ARGENTINA	0	0	0	0	0	0	0	0	0	0	0	0	0	0	0	0	0	0	0	0					
BELIZE (BRIT HONDU)	0	0	0	0	0	0	0	0	0	0	0	0	0	0	0	0	0	0	0	0					
BOLIVIA	0	0	0	0	0	0	0	0	0	0	0	0	0	0	0	0	0	0	0	0					

May 2009 Totals by Location Moved From, and By County Moved To

FROM / TO	LEWIS	LINCOLN	MASON	OKANAGON	PACIFIC	PEND OREILLE	PIERCE	SAN JUAN	SKAGIT	SKAMANIA	SNOHOMISH	SPOKANE	STEVENS	THURSTON	WAHKIAKUM	WALLA WALLA	WHATCOM	WHITMAN	YAKIMA	UNKNOWN	
BRAZIL	0	0	0	0	0	0	0	0	0	0	0	0	0	0	0	0	0	0	0	2	0
CHILE	0	0	0	0	0	0	0	0	0	0	0	0	0	0	0	0	0	0	0	0	0
CANAL ZONE	0	0	0	0	0	0	0	0	0	0	0	0	0	0	0	0	0	0	0	0	0
COLUMBIA	0	0	0	0	0	0	0	0	0	0	0	0	0	0	0	0	0	0	0	0	0
COSTA RICA	0	0	0	0	0	0	0	0	0	0	0	0	0	0	0	0	0	0	0	0	0
EL SALVADOR	0	0	0	0	0	0	2	0	0	0	2	3	0	0	0	0	0	0	0	0	0
EQUADOR	0	0	0	0	0	0	0	0	0	0	0	1	0	0	0	0	0	0	0	0	0
GUYANA	0	0	0	0	0	0	0	0	0	0	0	0	0	0	0	0	0	0	0	0	0
NICARAGUA	0	0	0	0	0	0	0	0	0	0	0	0	0	0	0	0	0	0	0	0	0
PANAMA	0	0	0	0	0	0	0	0	0	0	0	0	0	0	0	0	0	0	0	0	0
PERU	0	0	0	0	0	0	0	0	0	0	0	0	0	0	0	0	0	0	0	0	0
PARAGUAY	0	0	0	0	0	0	0	0	0	0	0	0	0	0	0	0	0	0	0	0	0
SURINAM	0	0	0	0	0	0	0	0	0	0	0	0	0	0	0	0	0	0	0	0	0
TRINIDAD	0	0	0	0	0	0	0	0	0	0	0	0	0	0	0	0	0	0	0	0	0
UPPER VOLTA	0	0	0	0	0	0	0	0	0	0	0	0	0	0	0	0	0	0	0	0	0
URUGUAY	0	0	0	0	0	0	0	0	0	0	0	0	0	0	0	0	0	0	0	0	0
VENEZUELA	0	0	0	0	0	0	0	0	0	0	0	0	0	0	0	0	0	0	0	0	0
ALGERIA	0	0	0	0	0	0	0	0	0	0	0	0	0	0	0	0	0	0	0	0	0
ANGOLA	0	0	0	0	0	0	0	0	0	0	0	0	0	0	0	0	0	0	0	0	0
CAMERON	0	0	0	0	0	0	0	0	0	0	0	0	0	0	0	0	0	0	0	0	0
CHAD	0	0	0	0	0	0	0	0	0	0	0	0	0	0	0	0	0	0	0	0	0
CONGO	0	0	0	0	0	0	0	0	0	0	0	0	0	0	0	0	0	0	0	0	0
C. AFRICAN REP.	0	0	0	0	0	0	0	0	0	0	0	0	0	0	0	0	0	0	0	0	0
BOTSWANA	0	0	0	0	0	0	0	0	0	0	0	0	0	0	0	0	0	0	0	0	0
BURUNDI	0	0	0	0	0	0	0	0	0	0	0	0	0	0	0	0	0	0	0	0	0
DAHOMEY	0	0	0	0	0	0	0	0	0	0	0	0	0	0	0	0	0	0	0	0	0
EQ. GUINEA	0	0	0	0	0	0	0	0	0	0	0	0	0	0	0	0	0	0	0	0	0
EGYPT	0	0	0	0	0	0	0	0	0	0	0	0	0	0	0	0	0	0	0	0	0
ETHIOPIA	0	0	0	0	0	0	0	0	0	0	0	0	0	0	0	0	0	0	0	0	0
GABON	0	0	0	0	0	0	0	0	0	0	0	0	0	0	0	0	0	0	0	0	0
GAMBIA	0	0	0	0	0	0	0	0	0	0	1	0	0	0	0	0	0	0	0	0	0
GHANA	0	0	0	0	0	0	0	0	0	0	0	0	0	0	0	0	0	0	0	0	0
GUINEA	0	0	0	0	0	0	0	0	0	0	0	0	0	0	0	0	0	0	0	0	0
IVORY COAST	0	0	0	0	0	0	0	0	0	0	0	0	0	0	0	0	0	0	0	0	0
KENYA	0	0	0	0	0	0	0	0	0	0	0	0	0	0	0	0	0	0	1	0	0
LIBYA	0	0	0	0	0	0	0	0	0	0	0	0	0	0	0	0	0	0	1	0	0
LIBERIA	0	0	0	0	0	0	0	0	0	0	0	0	0	0	0	0	0	0	0	0	0
MALAWI	0	0	0	0	0	0	0	0	0	0	0	0	0	0	0	0	0	0	0	0	0
MALAGASY	0	0	0	0	0	0	0	0	0	0	0	0	0	0	0	0	0	0	0	0	0
MOROCCO	0	0	0	0	0	0	0	0	0	0	0	0	0	0	0	0	0	0	0	0	0
MAURITANIA	0	0	0	0	0	0	0	0	0	0	0	0	0	0	0	0	0	0	0	0	0
MALI	0	0	0	0	0	0	0	0	0	0	0	0	0	0	0	0	0	0	0	0	0
NIGER	0	0	0	0	0	0	0	0	0	0	0	0	0	0	0	0	0	0	0	0	0
NIGERIA	0	0	0	0	0	0	0	0	0	0	0	0	0	0	0	0	0	0	0	0	0
RHODESIA	0	0	0	0	0	0	0	0	0	0	0	0	0	0	0	0	0	0	0	0	0
RWANDA	0	0	0	0	0	0	0	0	0	0	0	0	0	0	0	0	0	0	0	0	0
SOUTH AFRICA	0	0	0	0	0	0	0	0	0	0	0	0	0	0	0	0	0	0	0	0	0
SOUTH WEST AFRICA	0	0	0	0	0	0	0	0	0	0	0	0	0	0	0	0	0	0	0	0	0
SIERRA LEONE	0	0	0	0	0	0	0	0	0	0	0	0	0	0	0	0	0	0	0	0	0
SWAZILAND	0	0	0	0	0	0	0	0	0	0	0	0	0	0	0	0	0	0	0	0	0
SENEGAL	0	0	0	0	0	0	0	0	0	0	0	0	0	0	0	0	0	0	0	0	0
SOMALI REPUBLIC	0	0	0	0	0	0	0	0	0	0	0	0	0	0	0	0	0	0	0	0	0
SUDAN	0	0	0	0	0	0	0	0	0	0	0	0	0	0	0	0	0	0	0	0	0
TOGO	0	0	0	0	0	0	0	0	0	0	0	0	0	0	0	0	0	0	0	0	0
TUNISIA	0	0	0	0	0	0	0	0	0	0	0	0	0	0	0	0	0	0	0	0	0
TANZANIA	0	0	0	0	0	0	0	0	0	0	0	0	0	0	0	0	0	0	0	0	0

May 2009 Totals by Location Moved From, and By County Moved To

FROM / TO	LEWIS	LINCOLN	MASON	OKANAGON	PACIFIC	PEND OREILLE	PIERCE	SAN JUAN	SKAGIT	SKAMANIA	SNOHOMISH	SPOKANE	STEVENS	THURSTON	WAHKIAKUM	WALLA WALLA	WHATCOM	WHITMAN	YAKIMA	UNKNOWN
UGANDA	0	0	0	0	0	0	0	0	0	0	0	0	0	0	0	0	0	0	0	0
ZAIRE	0	0	0	0	0	0	0	0	0	0	0	0	0	0	0	0	0	0	0	0
AFGHANISTAN	0	0	0	0	0	0	0	0	0	0	0	0	0	0	0	0	0	0	0	0
BANGLADESH	0	0	0	0	0	0	0	0	0	0	0	0	0	0	0	0	0	0	0	0
BHUTAN	0	0	0	0	0	0	0	0	0	0	0	0	0	0	0	0	0	0	0	0
BURMA	0	0	0	0	0	0	0	0	0	0	0	0	0	0	0	0	0	0	0	0
BAHRAIN	0	0	0	0	0	0	0	0	0	0	0	0	0	0	0	0	0	0	0	0
CEYLON (SRI LANKA)	0	0	0	0	0	0	0	0	0	0	0	0	0	0	0	0	0	0	0	0
CHINA	0	0	0	0	0	0	0	0	0	0	0	0	0	0	0	0	0	3	0	0
CAMBODIA	0	0	0	0	0	0	0	0	0	0	0	0	0	0	0	0	0	0	0	0
CYPRUS	0	0	0	0	0	0	0	0	0	0	0	0	0	0	0	0	0	0	0	0
JORDAN	0	0	0	0	0	0	0	0	0	0	0	0	0	0	0	0	0	0	0	0
JAPAN	0	0	0	0	0	0	1	0	0	0	1	0	0	0	0	0	0	2	0	0
KUWAIT	0	0	0	0	0	0	0	0	0	0	0	0	0	0	0	0	0	0	0	0
IRAN	0	0	0	0	0	0	0	0	0	0	0	0	0	0	0	0	0	0	0	0
ISRAEL	0	0	0	0	0	0	0	0	0	0	0	0	0	0	0	0	0	0	0	0
INDIA	0	0	0	0	0	0	0	0	0	0	2	0	0	0	0	0	0	0	0	0
IRAQ	0	0	0	0	0	0	0	0	0	0	0	0	0	0	0	0	0	0	0	0
INDONESIA	0	0	0	0	0	0	0	0	0	0	0	0	0	0	0	0	0	0	0	0
KOREA	0	0	0	0	0	0	6	0	0	0	12	0	0	0	0	0	0	6	0	0
LAOS	0	0	0	0	0	0	1	0	0	0	0	0	0	0	0	0	0	0	0	0
LEBANON	0	0	0	0	0	0	0	0	0	0	0	0	0	0	0	0	0	0	0	0
MALAYSIA	0	0	0	0	0	0	0	0	0	0	0	0	0	0	0	0	0	0	0	0
MONGOLIA	0	0	0	0	0	0	0	0	0	0	0	0	0	0	0	0	0	0	0	0
NEPAL	0	0	0	0	0	0	0	0	0	0	0	0	0	0	0	0	0	0	0	0
OMAN	0	0	0	0	0	0	0	0	0	0	0	0	0	0	0	0	0	0	0	0
PAKISTAN	0	0	0	0	0	0	0	0	0	0	0	0	0	0	0	0	0	0	0	0
QATAR	0	0	0	0	0	0	0	0	0	0	0	0	0	0	0	0	0	0	0	0
SIKKIM	0	0	0	0	0	0	0	0	0	0	0	0	0	0	0	0	0	0	0	0
SYRIA	0	0	0	0	0	0	0	0	0	0	0	0	0	0	0	0	0	0	0	0
SAUDI ARABIA	0	0	0	0	0	0	0	0	0	0	0	0	0	0	0	0	0	0	0	0
SINGAPORE	0	0	0	0	0	0	0	0	0	0	0	0	0	0	0	0	0	0	0	0
TAIWAN	0	0	0	0	0	0	0	0	0	0	0	0	0	0	0	0	0	1	0	0
THAILAND	0	0	0	0	0	0	0	0	0	0	0	0	0	0	0	0	0	0	0	0
TURKEY	0	0	0	0	0	0	0	0	0	0	0	0	0	0	0	0	0	0	0	0
USSR	0	0	0	0	0	0	0	0	0	0	0	0	0	0	0	0	0	0	0	0
UNITED ARAB EMIRATE	0	0	0	0	0	0	0	0	0	0	0	0	0	0	0	0	0	0	0	0
VIETNAM	0	0	0	0	0	0	0	0	0	0	0	0	0	0	0	0	0	0	0	0
YEMEN	0	0	0	0	0	0	0	0	0	0	0	0	0	0	0	0	0	0	0	0
AUSTRIA	0	0	0	0	0	0	0	0	0	0	0	0	0	0	0	0	0	0	0	0
BULGARIA	0	0	0	0	0	0	2	0	0	0	0	0	0	0	0	0	0	0	0	0
BELGIUM	0	0	0	0	0	0	0	0	0	0	0	0	0	0	0	0	0	0	0	0
DENMARK	0	0	0	0	0	0	0	0	0	0	0	0	0	0	0	0	0	0	0	0
ENGLAND	0	0	0	0	0	0	0	0	0	0	0	0	0	0	0	0	0	0	0	0
FRANCE	0	0	0	0	0	0	0	0	0	0	0	0	0	0	0	0	0	0	0	0
FINLAND	0	0	0	0	0	0	0	0	0	0	0	0	0	0	0	0	0	0	0	0
CZECHOSLAVAKIA	0	0	0	0	0	0	0	0	0	0	0	0	0	0	0	0	0	0	0	0
GREECE	0	0	0	0	0	0	0	0	0	0	0	0	0	0	0	0	0	0	0	0
GERMANY	0	0	0	0	0	0	2	0	0	0	0	1	0	2	0	0	0	0	0	0
IRELAND	0	0	0	0	0	0	0	0	0	0	0	0	0	0	0	0	0	0	0	0
ITALY	0	0	0	0	0	0	0	0	0	0	0	0	1	0	0	0	0	0	0	0
HUNGARY	0	0	0	0	0	0	0	0	0	0	0	0	0	0	0	0	0	0	0	0
LUXEMBOURG	0	0	0	0	0	0	0	0	0	0	0	0	0	0	0	0	0	0	0	0
NETHERLANDS	0	0	0	0	0	0	0	0	0	0	0	0	0	0	0	0	0	0	0	0
NORWAY	0	0	0	0	0	0	0	0	0	0	1	0	0	0	0	0	0	0	0	0
POLAND	0	0	0	0	0	0	0	0	0	0	0	0	0	0	0	0	0	0	0	0

May 2009 Totals by Location Moved From, and By County Moved To

FROM / TO	LEWIS	LINCOLN	MASON	OKANAGON	PACIFIC	PEND OREILLE	PIERCE	SAN JUAN	SKAGIT	SKAMANIA	SNOHOMISH	SPOKANE	STEVENS	THURSTON	WAHKIAKUM	WALLA WALLA	WHATCOM	WHITMAN	YAKIMA	UNKNOWN
SPAIN	0	0	0	0	0	0	0	0	0	0	0	0	0	0	0	0	0	0	0	0
SWITZERLAND	0	0	0	0	0	0	0	0	0	0	0	0	0	0	0	0	0	0	0	0
SWEDEN	0	0	0	0	0	0	0	0	0	0	0	0	0	0	0	0	0	0	0	0
ROMANIA	0	0	0	0	0	0	0	0	0	0	0	0	0	0	0	0	0	0	0	0
YUGOSLAVIA	0	0	0	0	0	0	0	0	0	0	0	0	0	0	0	0	0	0	0	0
ALBANIA	0	0	0	0	0	0	0	0	0	0	0	0	0	0	0	0	0	0	0	0
ANDORRA	0	0	0	0	0	0	0	0	0	0	0	0	0	0	0	0	0	0	0	0
AMERICAN SAMOA	0	0	0	0	0	0	8	0	0	0	0	0	0	0	0	0	0	0	0	0
BORNEO	0	0	0	0	0	0	0	0	0	0	0	0	0	0	0	0	0	0	0	0
CUBA	0	0	0	0	0	0	0	0	0	0	0	0	0	0	0	0	0	0	0	0
BERMUDA	0	0	0	0	0	0	0	0	0	0	0	0	0	0	0	0	0	0	0	0
DOMINICAN REPUBLIC	0	0	0	0	0	0	0	0	0	0	0	0	0	0	0	0	0	0	0	0
FIJI	0	0	0	0	0	0	0	0	0	0	0	0	0	0	0	0	0	0	0	0
GUAM	0	0	0	0	0	0	4	0	0	0	2	2	0	0	0	1	0	0	0	0
HAITI	0	0	0	0	0	0	0	0	0	0	0	0	0	0	0	0	0	0	0	0
JAMAICA	0	0	0	0	0	0	0	0	0	0	1	0	0	0	0	0	0	0	0	0
NEW ZEALAND	0	0	0	0	0	0	0	0	0	0	0	0	0	0	0	0	0	0	0	0
PORTUGAL	0	0	0	0	0	0	0	0	0	0	0	0	0	0	0	0	0	0	0	0
PHILIPPINES	0	0	0	0	0	0	0	0	0	0	2	0	0	0	0	0	0	0	0	0
PUERTO RICO	0	0	0	0	0	0	0	0	0	0	0	0	0	2	0	0	1	0	0	0
TAHITI	0	0	0	0	0	0	0	0	0	0	0	0	0	0	0	0	0	0	0	0
TONGA	0	0	0	0	0	0	0	0	0	0	0	0	0	0	0	0	0	0	0	0
VIRGIN ISLANDS	0	0	0	0	0	0	0	0	0	1	1	0	0	0	0	0	0	0	0	0
WEST SAMOA	0	0	0	0	0	0	0	0	0	0	0	0	0	0	0	0	0	0	0	0
AUSTRALIA	0	0	0	0	0	0	5	0	0	0	1	1	0	0	0	0	0	0	0	0
ANTARTICA	0	0	0	0	0	0	0	0	0	0	0	0	0	0	0	0	0	0	0	0
ICELAND	0	0	0	0	0	0	0	0	0	0	0	0	0	0	0	0	0	0	0	0
GREENLAND	0	0	0	0	0	0	0	0	0	0	0	0	0	0	0	0	0	0	0	0
MEXICO	0	0	0	0	0	0	8	2	0	1	21	1	1	1	0	8	0	0	13	0
ALBERTA	0	0	0	1	1	0	0	0	0	0	1	1	0	0	0	0	3	2	0	0
BRITISH COLUMBIA	0	0	0	4	0	1	4	0	2	0	3	3	0	4	0	0	14	2	1	0
MANITOBA	0	0	0	0	0	0	0	0	0	0	0	0	0	0	0	0	0	0	0	0
NEW BRUNSWICK	0	0	0	0	0	0	0	0	0	0	0	0	0	0	0	0	0	0	0	0
NEWFOUNDLAND	0	0	0	0	0	0	0	0	0	0	0	0	0	0	0	0	0	0	0	0
NOVA SCOTIA	0	0	0	0	0	0	0	0	0	0	0	0	0	0	0	0	0	0	0	0
ONTARIO	0	0	0	0	0	0	1	0	0	0	7	3	0	0	0	1	0	0	0	0
PRINCE EDWARD IS.	0	0	0	0	0	0	0	0	0	0	0	0	0	0	0	0	0	0	0	0
QUEBEC	0	0	0	0	0	0	0	0	0	0	0	0	0	0	0	0	0	0	0	0
SASKATCHEWAN	0	0	0	0	0	0	0	0	0	0	0	0	0	0	0	0	1	0	0	0
NORTHWEST TERRITORY	0	0	0	0	0	0	2	0	0	0	0	0	0	0	0	0	0	0	0	0
YUKON TERRITORY	0	0	0	0	0	0	0	0	0	0	0	0	0	0	0	0	0	0	0	0
UNKNOWN	0	0	0	0	0	0	8	0	4	0	8	4	2	1	0	2	5	0	0	0
** TOTAL **	144	15	75	54	63	23	1365	35	158	21	933	749	89	512	7	125	389	111	315	10