



STATE OF WASHINGTON
DEPARTMENT OF LICENSING
PO Box 9035 • Olympia, Washington 98507-9035

November 17, 2006

Washington State Drivers Report for October 2006

The monthly report for October 2006 tabulates Washington drivers' license (WDL) activity. The table below summarizes WDL migration in and out of Washington State. It also identifies the top three in-migration states. This data generates a net increase series. The reported month of surrendered WDLs is a reflection of the month Washington received the information and not when the driver left Washington. Therefore, the net increase is an estimate of net migration. Beginning with the April 1998 data, this report and supporting documentation are available via e-mail at the address below. Our formats are PDF for the report and Excel for the data files.

During the month of October (September 30, 2006 to October 28, 2006), a total of 13,606 out-of-state drivers obtained a Washington driver license. This is 282 less than the 13,888 who obtained licenses in October of 2005 (September 24, 2005 to October 29, 2005). Net migration to Washington for October 2006 increased by 3,875 drivers. For the 12 months ending October 2006, 164,570 out-of-state drivers obtained a Washington driver license, a 16.6 percent increase over the same month last year.

The table below displays data using a 12-month moving sum to help smooth out the monthly variance and reveal the trend. The graphs on the attached file display the results of this smoothing. The first graph plots new drivers moving into Washington as well as the net increase.

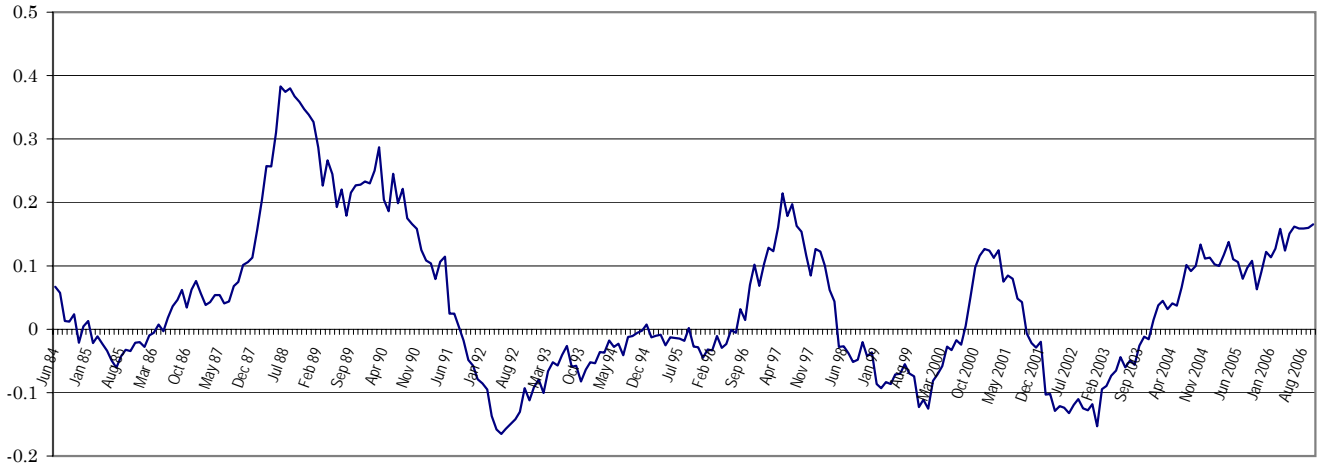
	Oct 2006			Year Ending Oct 2006		
	2005	2006	% Change	2005	2006	% Change
Total Drivers In	13,888	13,606	-2.0	141,192	164,570	16.6
California	3,358	2,956	-12.0	34,897	38,349	9.9
Oregon	1,719	1,624	-5.5	18,426	20,686	12.3
Texas	590	617	4.6	6,206	7,798	25.7
Returned WDL	5,788	9,731	68.1	72,622	69,048	-4.9
Net Increase	8,100	3,875	-52.2	68,570	95,522	39.3

Alice Vogel, Economic Analyst
Department of Licensing
Research and Planning Office
Highways and Licensing Building
Olympia, WA 98501-48001
(360) 902-3986
FAX: (360) 753-7500
E-Mail: avogel@dol.wa.gov

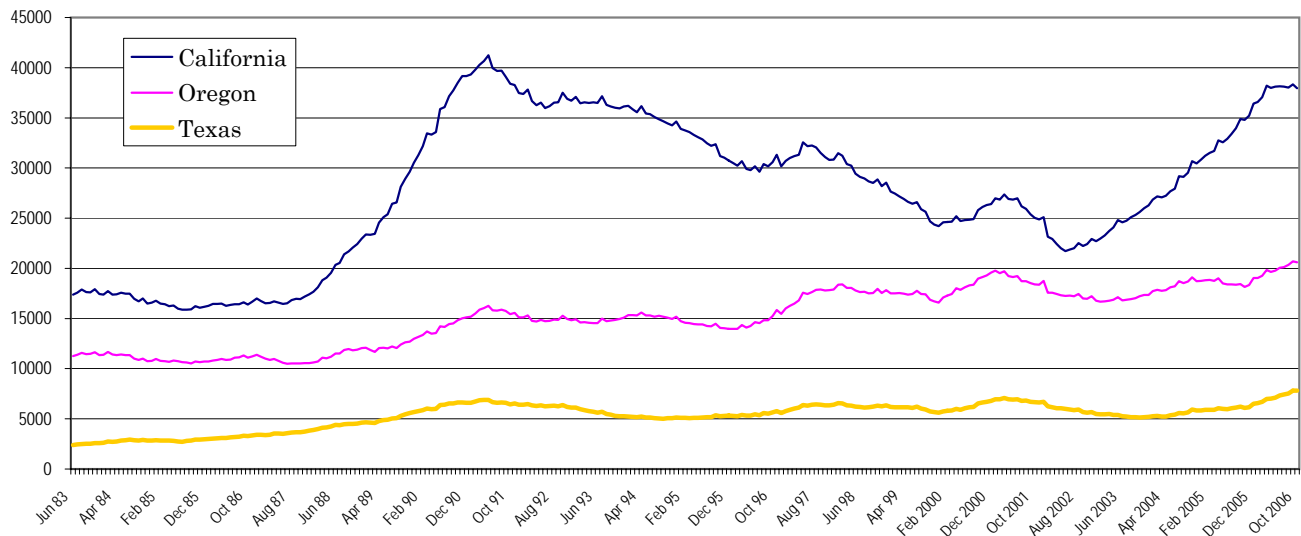
**Washington State Driver's Licenses
(12 Month Moving Sum)**



**% Change Year Ago
(12 Month Moving Sum)**



**Largest States
(12 Months Moving Sum)**



Net Increase States

Month: **October 2006**

<u>State</u>	<u>IN</u>	<u>OUT</u>	<u>Net in Migration</u>
ALABAMA	63	104	(41)
ALASKA	306	0	306
ARIZONA	518	94	424
ARKANSAS	83	50	33
CALIFORNIA	2956	588	2,368
COLORADO	421	386	35
CONNECTICUT	76	45	31
DELAWARE	10	12	(2)
FLORIDA	602	621	(19)
GEORGIA	201	252	(51)
HAWAII	214	175	39
IDAHO	502	1268	(766)
ILLINOIS	331	60	271
INDIANA	114	86	28
IOWA	77	105	(28)
KANSAS	116	116	0
KENTUCKY	47	130	(83)
LOUISIANA	93	109	(16)
MAINE	39	0	39
MARYLAND	136	89	47
MASSACHUSETTS	138	0	138
MICHIGAN	275	139	136
MINNESOTA	177	131	46
MISSISSIPPI	47	49	(2)
MISSOURI	143	177	(34)
MONTANA	262	0	262
NEBRASKA	76	66	10
NEVADA	312	483	(171)
NEW HAMPSHIRE	34	21	13
NEW JERSEY	120	50	70
NEW MEXICO	90	0	90
NEW YORK	286	229	57
NORTH CAROLINA	197	221	(24)
NORTH DAKOTA	45	28	17
OHIO	184	169	15
OKLAHOMA	91	50	41
OREGON	1624	874	750
PENNSYLVANIA	164	250	(86)
RHODE ISLAND	25	23	2
SOUTH CAROLINA	65	149	(84)
SOUTH DAKOTA	34	47	(13)
TENNESSEE	226	99	127
TEXAS	617	1163	(546)
UTAH	261	3	258
VERMONT	22	33	(11)
VIRGINIA	226	633	(407)
WASHINGTON	0	0	0
WEST VIRGINIA	15	16	(1)
WISCONSIN	166	220	(54)
WYOMING	53	64	(11)
WASH. DC	24	0	24
Total States	12,904	9,677	3,227

October 2006 Totals by Location Moved From, and By County Moved To

FROM/TO	TOTAL	GRAYS																			
		ADAMS	ASOTIN	BENTON	CHELAN	CLALLAM	CLARK	COLUMBIA	COWLITZ	DOUGLAS	FERRY	FRANKLIN	GARFIELD	GRANT	HARBOR	ISLAND	JEFFERSON	KING	KITSAP	KITTITAS	KLCKITAT
ALABAMA	63	0	0	3	0	0	1	0	2	1	1	1	0	0	1	0	8	5	0	0	
ALASKA	306	0	2	5	6	9	26	0	8	1	0	4	0	1	6	1	2	69	17	1	2
ARIZONA	518	1	1	6	8	8	34	0	12	1	0	5	0	5	8	3	162	15	1	2	
ARKANSAS	83	0	0	2	0	1	3	0	4	0	0	0	0	1	1	2	0	36	6	0	0
CALIFORNIA	2956	5	3	60	23	48	221	0	37	15	1	42	0	22	24	60	18	1077	135	8	12
COLORADO	421	0	1	13	2	10	29	0	3	1	0	2	0	3	3	11	4	171	12	2	1
CONNECTICUT	76	0	0	0	0	1	5	0	2	0	0	4	0	0	0	0	0	46	5	0	0
DELAWARE	10	0	0	1	0	0	1	0	0	0	0	1	0	1	0	0	0	3	1	0	0
FLORIDA	602	2	2	8	4	4	42	0	2	5	1	3	0	0	4	16	0	269	34	1	1
GEORGIA	201	0	0	1	2	1	8	0	0	0	0	1	0	2	1	1	2	92	11	0	0
HAWAII	214	0	0	1	2	3	14	0	2	0	0	0	0	0	5	6	1	84	18	2	0
IDAHO	502	2	43	20	0	8	21	1	8	2	6	7	2	8	6	9	1	87	13	6	2
ILLINOIS	331	0	0	5	2	1	41	0	7	0	0	0	0	0	0	4	1	162	11	0	2
INDIANA	114	0	1	3	1	0	5	0	1	0	0	1	0	1	0	1	3	61	2	1	1
IOWA	77	0	0	5	1	0	3	0	0	0	0	0	0	0	0	1	0	32	4	0	0
KANSAS	116	0	1	3	1	0	11	0	0	0	0	1	0	0	0	0	1	46	8	0	1
KENTUCKY	47	0	0	1	1	1	7	0	0	0	0	0	0	2	0	0	0	12	3	0	0
LOUISIANA	93	0	0	3	1	1	6	0	0	0	0	0	0	0	1	0	0	37	6	0	0
MAINE	39	0	0	0	0	0	3	0	0	0	0	0	0	0	0	3	1	19	0	0	0
MARYLAND	136	0	0	3	0	3	7	0	0	0	0	0	1	3	2	3	0	71	2	0	0
MASSACHUSETTS	138	0	0	1	1	0	6	0	2	0	0	0	0	1	0	1	1	83	4	0	0
MICHIGAN	275	0	0	1	0	1	21	0	0	1	0	0	0	2	1	3	0	125	8	0	1
MINNESOTA	177	0	0	2	0	0	13	0	2	2	0	0	0	1	1	2	1	75	4	0	1
MISSISSIPPI	47	0	0	2	0	0	3	0	2	0	0	0	0	0	3	0	0	13	1	0	1
MISSOURI	143	0	0	2	2	0	15	0	0	0	0	0	0	0	1	3	0	58	1	2	0
MONTANA	262	0	2	4	5	5	21	0	7	0	2	0	0	4	1	5	5	53	9	1	0
NEBRASKA	76	1	0	1	1	4	0	0	0	0	0	1	0	1	1	3	0	24	0	0	0
NEVADA	312	0	0	7	0	1	31	2	7	3	0	2	0	2	3	7	3	83	12	1	0
NEW HAMPSHIRE	34	0	0	1	0	0	5	0	0	0	0	0	0	0	0	1	0	13	0	0	0
NEW JERSEY	120	0	0	2	0	1	7	0	2	0	0	0	0	0	0	0	0	70	6	0	2
NEW MEXICO	90	0	0	5	1	1	6	0	0	0	0	0	0	2	3	0	1	32	1	1	1
NEW YORK	286	0	0	4	0	0	18	0	4	1	1	0	0	0	1	3	1	166	5	1	0
NORTH CAROLINA	197	0	2	4	1	0	14	0	2	0	0	3	0	4	0	3	0	83	5	1	1
NORTH DAKOTA	45	0	1	3	1	0	0	0	0	1	0	0	0	1	0	0	0	13	3	2	0
OHIO	184	0	2	8	0	1	14	0	4	0	0	0	0	0	0	3	2	77	9	0	0
OKLAHOMA	91	0	0	2	2	0	9	0	1	0	0	0	0	1	0	6	1	32	5	0	0
OREGON	1624	0	2	45	11	15	517	0	75	4	1	20	0	17	9	15	12	273	34	8	33
PENNSYLVANIA	164	0	0	3	1	2	5	0	1	0	1	0	0	2	0	3	0	78	5	1	2
RHODE ISLAND	25	0	0	0	0	0	1	0	0	0	0	0	0	0	1	0	0	12	3	0	0
SOUTH CAROLINA	65	0	0	3	0	0	6	0	0	2	0	1	0	0	0	1	0	14	3	0	0
SOUTH DAKOTA	34	0	0	2	0	0	6	0	0	0	0	0	0	1	2	0	0	10	2	0	0
TENNESSEE	226	0	0	14	3	2	8	0	1	0	0	3	0	2	3	3	0	116	7	0	0
TEXAS	617	1	1	13	1	2	30	0	7	2	0	3	0	6	1	13	0	235	32	1	0
UTAH	261	0	0	13	1	6	17	0	3	1	0	4	0	9	2	5	0	84	4	3	2
VERMONT	22	0	0	0	0	0	0	0	0	0	0	0	0	0	0	0	0	13	0	0	0
VIRGINIA	226	0	1	5	4	1	12	0	0	0	0	3	0	1	0	8	0	116	17	0	1
WASHINGTON	0	0	0	0	0	0	0	0	0	0	0	0	0	0	0	0	0	0	0	0	0
WEST VIRGINIA	15	0	0	0	0	0	2	0	0	0	0	0	0	0	0	0	0	4	0	0	0
WISCONSIN	166	0	0	0	1	1	6	0	3	0	1	0	0	1	1	4	1	86	7	0	2
WYOMING	53	0	0	1	1	1	3	0	0	0	3	0	0	0	0	2	0	9	8	1	0
WASHINGTON D.C.	24	0	0	0	0	0	1	0	0	0	0	0	0	0	0	0	0	17	0	0	1
ARGENTINA	0	0	0	0	0	0	0	0	0	0	0	0	0	0	0	0	0	0	0	0	0
BELIZE (BRIT HONDU)	0	0	0	0	0	0	0	0	0	0	0	0	0	0	0	0	0	0	0	0	0
BOLIVIA	0	0	0	0	0	0	0	0	0	0	0	0	0	0	0	0	0	0	0	0	0

October 2006 Totals by Location Moved From, and By County Moved To

FROM / TO	TOTAL	GRAYS																			
		ADAMS	ASOTIN	BENTON	CHELAN	CLALLAM	CLARK	COLUMBIA	COWLITZ	DOUGLAS	FERRY	FRANKLIN	GARFIELD	GRANT	HARBOR	ISLAND	JEFFERSON	KING	KITSAP	KITTITAS	KLCKITAT
BRAZIL	38	0	0	0	0	0	0	0	0	0	0	0	0	0	0	0	0	34	0	0	0
CHILE	3	0	0	0	0	0	1	0	0	0	0	0	0	0	0	0	0	1	0	0	0
CANAL ZONE	0	0	0	0	0	0	0	0	0	0	0	0	0	0	0	0	0	0	0	0	0
COLUMBIA	2	0	0	0	0	0	0	0	0	0	0	0	0	0	0	0	0	2	0	0	0
COSTA RICA	1	0	0	0	0	0	0	0	0	0	0	0	0	0	0	0	0	0	0	0	0
EL SALVADOR	3	0	0	0	1	0	0	0	0	0	0	0	0	0	0	0	0	0	0	0	0
EQUADOR	13	0	0	0	1	0	0	0	0	0	0	0	0	0	0	0	0	8	0	0	0
GUYANA	0	0	0	0	0	0	0	0	0	0	0	0	0	0	0	0	0	0	0	0	0
NICARAGUA	0	0	0	0	0	0	0	0	0	0	0	0	0	0	0	0	0	0	0	0	0
PANAMA	1	0	1	0	0	0	0	0	0	0	0	0	0	0	0	0	0	0	0	0	0
PERU	8	0	0	0	0	0	0	0	0	0	0	0	0	0	0	0	0	8	0	0	0
PARAGUAY	0	0	0	0	0	0	0	0	0	0	0	0	0	0	0	0	0	0	0	0	0
SURINAM	0	0	0	0	0	0	0	0	0	0	0	0	0	0	0	0	0	0	0	0	0
TRINIDAD	0	0	0	0	0	0	0	0	0	0	0	0	0	0	0	0	0	0	0	0	0
UPPER VOLTA	0	0	0	0	0	0	0	0	0	0	0	0	0	0	0	0	0	0	0	0	0
URUGUAY	0	0	0	0	0	0	0	0	0	0	0	0	0	0	0	0	0	0	0	0	0
VENEZUELA	1	0	0	0	0	0	0	0	0	0	0	0	0	0	0	0	0	1	0	0	0
ALGERIA	0	0	0	0	0	0	0	0	0	0	0	0	0	0	0	0	0	0	0	0	0
ANGOLA	0	0	0	0	0	0	0	0	0	0	0	0	0	0	0	0	0	0	0	0	0
CAMERON	0	0	0	0	0	0	0	0	0	0	0	0	0	0	0	0	0	0	0	0	0
CHAD	0	0	0	0	0	0	0	0	0	0	0	0	0	0	0	0	0	0	0	0	0
CONGO	0	0	0	0	0	0	0	0	0	0	0	0	0	0	0	0	0	0	0	0	0
C. AFRICAN REP.	0	0	0	0	0	0	0	0	0	0	0	0	0	0	0	0	0	0	0	0	0
BOTSWANA	0	0	0	0	0	0	0	0	0	0	0	0	0	0	0	0	0	0	0	0	0
BURUNDI	0	0	0	0	0	0	0	0	0	0	0	0	0	0	0	0	0	0	0	0	0
DAHOMEY	0	0	0	0	0	0	0	0	0	0	0	0	0	0	0	0	0	0	0	0	0
EQ. GUINEA	0	0	0	0	0	0	0	0	0	0	0	0	0	0	0	0	0	0	0	0	0
EGYPT	0	0	0	0	0	0	0	0	0	0	0	0	0	0	0	0	0	0	0	0	0
ETHIOPIA	0	0	0	0	0	0	0	0	0	0	0	0	0	0	0	0	0	0	0	0	0
GABON	0	0	0	0	0	0	0	0	0	0	0	0	0	0	0	0	0	0	0	0	0
GAMBIA	0	0	0	0	0	0	0	0	0	0	0	0	0	0	0	0	0	0	0	0	0
GHANA	0	0	0	0	0	0	0	0	0	0	0	0	0	0	0	0	0	0	0	0	0
GUINEA	0	0	0	0	0	0	0	0	0	0	0	0	0	0	0	0	0	0	0	0	0
IVORY COAST	0	0	0	0	0	0	0	0	0	0	0	0	0	0	0	0	0	0	0	0	0
KENYA	1	0	0	0	0	0	0	0	0	0	0	0	0	0	0	0	0	1	0	0	0
LIBYA	0	0	0	0	0	0	0	0	0	0	0	0	0	0	0	0	0	0	0	0	0
LIBERIA	0	0	0	0	0	0	0	0	0	0	0	0	0	0	0	0	0	0	0	0	0
MALAWI	0	0	0	0	0	0	0	0	0	0	0	0	0	0	0	0	0	0	0	0	0
MALAGASY	0	0	0	0	0	0	0	0	0	0	0	0	0	0	0	0	0	0	0	0	0
MORROCCO	0	0	0	0	0	0	0	0	0	0	0	0	0	0	0	0	0	0	0	0	0
MAURITANIA	0	0	0	0	0	0	0	0	0	0	0	0	0	0	0	0	0	0	0	0	0
MALI	0	0	0	0	0	0	0	0	0	0	0	0	0	0	0	0	0	0	0	0	0
NIGER	0	0	0	0	0	0	0	0	0	0	0	0	0	0	0	0	0	0	0	0	0
NIGERIA	0	0	0	0	0	0	0	0	0	0	0	0	0	0	0	0	0	0	0	0	0
RHODESIA	0	0	0	0	0	0	0	0	0	0	0	0	0	0	0	0	0	0	0	0	0
RWANDA	0	0	0	0	0	0	0	0	0	0	0	0	0	0	0	0	0	0	0	0	0
SOUTH AFRICA	1	0	0	0	0	0	0	0	0	0	0	0	0	0	0	0	0	1	0	0	0
SOUTH WEST AFRICA	0	0	0	0	0	0	0	0	0	0	0	0	0	0	0	0	0	0	0	0	0
SIERRA LEONE	0	0	0	0	0	0	0	0	0	0	0	0	0	0	0	0	0	0	0	0	0
SWAZILAND	0	0	0	0	0	0	0	0	0	0	0	0	0	0	0	0	0	0	0	0	0
SENEGAL	0	0	0	0	0	0	0	0	0	0	0	0	0	0	0	0	0	0	0	0	0
SOMALI REPUBLIC	0	0	0	0	0	0	0	0	0	0	0	0	0	0	0	0	0	0	0	0	0
SUDAN	0	0	0	0	0	0	0	0	0	0	0	0	0	0	0	0	0	0	0	0	0
TOGO	0	0	0	0	0	0	0	0	0	0	0	0	0	0	0	0	0	0	0	0	0
TUNISIA	0	0	0	0	0	0	0	0	0	0	0	0	0	0	0	0	0	0	0	0	0
TANZANIA	0	0	0	0	0	0	0	0	0	0	0	0	0	0	0	0	0	0	0	0	0

October 2006 Totals by Location Moved From, and By County Moved To

FROM / TO	TOTAL	GRAYS																			
		ADAMS	ASOTIN	BENTON	CHELAN	CLALLAM	CLARK	COLUMBIA	COWLITZ	DOUGLAS	FERRY	FRANKLIN	GARFIELD	GRANT	HARBOR	ISLAND	JEFFERSON	KING	KITSAP	KITTITAS	KLCKITAT
UGANDA	0	0	0	0	0	0	0	0	0	0	0	0	0	0	0	0	0	0	0	0	0
ZAIRE	0	0	0	0	0	0	0	0	0	0	0	0	0	0	0	0	0	0	0	0	0
AFGHANISTAN	0	0	0	0	0	0	0	0	0	0	0	0	0	0	0	0	0	0	0	0	0
BANGLADESH	0	0	0	0	0	0	0	0	0	0	0	0	0	0	0	0	0	0	0	0	0
BHUTAN	0	0	0	0	0	0	0	0	0	0	0	0	0	0	0	0	0	0	0	0	0
BURMA	0	0	0	0	0	0	0	0	0	0	0	0	0	0	0	0	0	0	0	0	0
BAHRAIN	0	0	0	0	0	0	0	0	0	0	0	0	0	0	0	0	0	0	0	0	0
CEYLON (SRI LANKA)	0	0	0	0	0	0	0	0	0	0	0	0	0	0	0	0	0	0	0	0	0
CHINA	5	0	0	0	0	0	1	0	0	0	0	0	0	0	0	0	0	3	0	0	0
CAMBODIA	0	0	0	0	0	0	0	0	0	0	0	0	0	0	0	0	0	0	0	0	0
CYPRUS	0	0	0	0	0	0	0	0	0	0	0	0	0	0	0	0	0	0	0	0	0
JORDAN	0	0	0	0	0	0	0	0	0	0	0	0	0	0	0	0	0	0	0	0	0
JAPAN	3	0	0	0	0	0	0	0	0	0	0	0	0	0	0	0	0	1	0	0	0
KUWAIT	1	0	0	0	0	0	0	0	0	0	0	0	0	0	0	0	0	0	0	0	0
IRAN	0	0	0	0	0	0	0	0	0	0	0	0	0	0	0	0	0	0	0	0	0
ISRAEL	0	0	0	0	0	0	0	0	0	0	0	0	0	0	0	0	0	0	0	0	0
INDIA	11	0	0	0	0	0	0	0	0	0	0	0	0	0	0	0	0	10	0	0	0
IRAQ	0	0	0	0	0	0	0	0	0	0	0	0	0	0	0	0	0	0	0	0	0
INDONESIA	3	0	0	0	0	0	0	0	0	0	0	0	0	0	0	0	0	3	0	0	0
KOREA	9	0	0	0	0	0	0	0	0	0	0	0	0	0	0	0	0	4	0	0	0
LAOS	0	0	0	0	0	0	0	0	0	0	0	0	0	0	0	0	0	0	0	0	0
LEBANON	0	0	0	0	0	0	0	0	0	0	0	0	0	0	0	0	0	0	0	0	0
MALAYSIA	0	0	0	0	0	0	0	0	0	0	0	0	0	0	0	0	0	0	0	0	0
MONGOLIA	5	0	0	0	0	0	0	0	0	0	0	0	0	0	0	0	0	5	0	0	0
NEPAL	0	0	0	0	0	0	0	0	0	0	0	0	0	0	0	0	0	0	0	0	0
OMAN	1	0	0	0	0	0	0	0	0	0	0	0	0	0	0	0	0	1	0	0	0
PAKISTAN	1	0	0	0	0	0	0	0	0	0	0	0	0	0	0	0	0	1	0	0	0
QATAR	0	0	0	0	0	0	0	0	0	0	0	0	0	0	0	0	0	0	0	0	0
SIKKIM	0	0	0	0	0	0	0	0	0	0	0	0	0	0	0	0	0	0	0	0	0
SYRIA	0	0	0	0	0	0	0	0	0	0	0	0	0	0	0	0	0	0	0	0	0
SAUDI ARABIA	0	0	0	0	0	0	0	0	0	0	0	0	0	0	0	0	0	0	0	0	0
SINGAPORE	1	0	0	0	0	0	0	0	0	0	0	0	0	0	0	0	0	1	0	0	0
TAIWAN	2	0	0	0	0	0	0	0	0	0	0	0	0	0	0	0	0	0	0	0	0
THAILAND	0	0	0	0	0	0	0	0	0	0	0	0	0	0	0	0	0	0	0	0	0
TURKEY	0	0	0	0	0	0	0	0	0	0	0	0	0	0	0	0	0	0	0	0	0
USSR	1	0	0	0	0	0	0	0	0	0	0	0	0	0	0	0	0	1	0	0	0
UNITED ARAB EMIRATE	0	0	0	0	0	0	0	0	0	0	0	0	0	0	0	0	0	0	0	0	0
VIETNAM	3	0	0	0	0	0	0	0	0	0	0	0	0	0	0	0	0	1	0	0	0
YEMEN	0	0	0	0	0	0	0	0	0	0	0	0	0	0	0	0	0	0	0	0	0
AUSTRIA	0	0	0	0	0	0	0	0	0	0	0	0	0	0	0	0	0	0	0	0	0
BULGARIA	3	0	0	0	0	0	1	0	0	0	0	0	0	0	0	0	0	2	0	0	0
BELGIUM	0	0	0	0	0	0	0	0	0	0	0	0	0	0	0	0	0	0	0	0	0
DENMARK	0	0	0	0	0	0	0	0	0	0	0	0	0	0	0	0	0	0	0	0	0
ENGLAND	13	0	0	0	0	0	0	0	1	0	0	0	0	0	0	0	0	10	0	0	0
FRANCE	1	0	0	0	0	0	0	0	0	0	0	0	0	0	0	0	0	1	0	0	0
FINLAND	0	0	0	0	0	0	0	0	0	0	0	0	0	0	0	0	0	0	0	0	0
CZECHOSLAVAKIA	0	0	0	0	0	0	0	0	0	0	0	0	0	0	0	0	0	0	0	0	0
GREECE	0	0	0	0	0	0	0	0	0	0	0	0	0	0	0	0	0	0	0	0	0
GERMANY	20	0	0	0	0	0	0	0	2	0	0	0	0	0	0	0	0	8	0	0	0
IRELAND	3	0	0	0	0	0	0	0	0	0	0	0	0	0	0	0	0	3	0	0	0
ITALY	1	0	0	0	0	0	0	0	0	0	0	0	0	0	0	0	0	1	0	0	0
HUNGARY	1	0	0	0	0	0	0	0	0	0	0	0	0	0	0	0	0	0	1	0	0
LUXEMBOURG	0	0	0	0	0	0	0	0	0	0	0	0	0	0	0	0	0	0	0	0	0
NETHERLANDS	6	0	0	0	0	0	0	0	0	0	0	0	0	0	0	0	0	4	2	0	0
NORWAY	1	0	0	0	0	0	0	0	0	0	0	0	0	0	0	0	0	1	0	0	0
POLAND	4	0	0	0	0	0	0	0	0	0	0	0	0	0	0	0	0	2	0	0	0

October 2006 Totals by Location Moved From, and By County Moved To

FROM / TO	TOTAL	GRAYS																			
		ADAMS	ASOTIN	BENTON	CHELAN	CLALLAM	CLARK	COLUMBIA	COWLITZ	DOUGLAS	FERRY	FRANKLIN	GARFIELD	GRANT	HARBOR	ISLAND	JEFFERSON	KING	KITSAP	KITTITAS	KLCKITAT
SPAIN	1	0	0	0	0	0	0	0	0	0	0	0	0	0	0	1	0	0	0	0	0
SWITZERLAND	2	0	0	0	0	0	0	0	0	0	0	0	0	0	0	0	0	2	0	0	0
SWEDEN	1	0	0	0	0	0	0	0	0	0	0	0	0	0	0	0	1	0	0	0	0
ROMANIA	6	0	0	0	0	0	3	0	0	0	0	0	0	0	0	0	2	0	0	0	0
YUGOSLAVIA	0	0	0	0	0	0	0	0	0	0	0	0	0	0	0	0	0	0	0	0	0
ALBANIA	0	0	0	0	0	0	0	0	0	0	0	0	0	0	0	0	0	0	0	0	0
ANDORRA	0	0	0	0	0	0	0	0	0	0	0	0	0	0	0	0	0	0	0	0	0
AMERICAN SAMOA	15	0	0	0	0	0	0	0	0	0	0	0	0	0	0	0	4	0	0	0	0
BORNEO	0	0	0	0	0	0	0	0	0	0	0	0	0	0	0	0	0	0	0	0	0
CUBA	0	0	0	0	0	0	0	0	0	0	0	0	0	0	0	0	0	0	0	0	0
BERMUDA	0	0	0	0	0	0	0	0	0	0	0	0	0	0	0	0	0	0	0	0	0
DOMINICAN REPUBLIC	0	0	0	0	0	0	0	0	0	0	0	0	0	0	0	0	0	0	0	0	0
FIJI	0	0	0	0	0	0	0	0	0	0	0	0	0	0	0	0	0	0	0	0	0
GUAM	46	0	0	0	0	2	3	0	0	0	0	0	0	0	2	1	0	13	5	0	0
HAITI	0	0	0	0	0	0	0	0	0	0	0	0	0	0	0	0	0	0	0	0	0
JAMAICA	0	0	0	0	0	0	0	0	0	0	0	0	0	0	0	0	0	0	0	0	0
NEW ZEALAND	0	0	0	0	0	0	0	0	0	0	0	0	0	0	0	0	0	0	0	0	0
PORTUGAL	2	0	0	0	0	0	0	0	0	0	0	0	0	0	0	0	2	0	0	0	0
PHILIPPINES	4	0	0	0	0	0	0	0	0	0	0	0	0	0	0	0	1	0	0	0	0
PUERTO RICO	19	0	0	0	0	0	1	0	0	0	0	0	0	1	0	1	0	3	0	0	0
TAHITI	0	0	0	0	0	0	0	0	0	0	0	0	0	0	0	0	0	0	0	0	0
TONGA	0	0	0	0	0	0	0	0	0	0	0	0	0	0	0	0	0	0	0	0	0
VIRGIN ISLANDS	0	0	0	0	0	0	0	0	0	0	0	0	0	0	0	0	0	0	0	0	0
WEST SAMOA	0	0	0	0	0	0	0	0	0	0	0	0	0	0	0	0	0	0	0	0	0
AUSTRALIA	2	0	0	0	0	0	0	0	0	0	0	0	0	0	0	0	2	0	0	0	0
ANTARTICA	0	0	0	0	0	0	0	0	0	0	0	0	0	0	0	0	0	0	0	0	0
ICELAND	0	0	0	0	0	0	0	0	0	0	0	0	0	0	0	0	0	0	0	0	0
GREENLAND	0	0	0	0	0	0	0	0	0	0	0	0	0	0	0	0	0	0	0	0	0
MEXICO	223	1	0	6	23	0	9	0	3	6	0	15	1	6	0	0	68	1	0	0	0
ALBERTA	14	0	0	1	0	0	1	0	0	0	0	0	0	0	0	0	5	0	0	0	0
BRITISH COLUMBIA	87	0	0	0	0	0	3	0	0	1	0	0	0	0	2	0	41	1	0	0	0
MANITOBA	0	0	0	0	0	0	0	0	0	0	0	0	0	0	0	0	0	0	0	0	0
NEW BRUNSWICK	0	0	0	0	0	0	0	0	0	0	0	0	0	0	0	0	0	0	0	0	0
NEWFOUNDLAND	0	0	0	0	0	0	0	0	0	0	0	0	0	0	0	0	0	0	0	0	0
NOVA SCOTIA	2	0	0	0	0	0	0	0	0	0	0	0	0	0	0	0	1	0	0	0	0
ONTARIO	59	0	0	0	0	0	1	0	0	0	0	0	0	0	1	0	44	0	0	0	0
PRINCE EDWARD IS.	1	0	0	0	0	0	0	0	0	0	0	0	0	0	0	0	1	0	0	0	0
QUEBEC	3	0	0	0	0	0	0	0	0	0	0	0	0	0	0	0	2	0	0	0	0
SASKATCHEWAN	3	0	0	0	0	0	0	0	0	0	0	0	0	0	0	0	1	0	0	0	0
NORTHWEST TERRITORY	0	0	0	0	0	0	0	0	0	0	0	0	0	0	0	0	0	0	0	0	0
YUKON TERRITORY	0	0	0	0	0	0	0	0	0	0	0	0	0	0	0	0	0	0	0	0	0
UNKNOWN	41	0	0	0	0	0	3	0	0	0	0	0	0	0	0	0	18	6	0	0	0
** TOTAL **	13606	13	66	298	116	145	1312	3	217	49	18	127	4	114	95	226	65	4941	519	45	72

October 2006 Totals by Location Moved From, and By County Moved To

FROM / TO	LEWIS	LINCOLN	MASON	OKANAGON	PACIFIC	PEND OREILLE	PIERCE	SAN JUAN	SKAGIT	SKAMANIA	SNOHOMISH	SPOKANE	STEVENS	THURSTON	WAHIAKIUM	WALLA	WHATCOM	WHITMAN	YAKIMA	UNKNOWN
ALABAMA	0	0	0	0	2	0	18	0	0	0	4	2	1	7	0	0	3	3	0	0
ALASKA	4	1	2	0	0	1	43	1	8	0	18	24	4	9	1	3	18	1	7	1
ARIZONA	4	5	4	1	2	1	62	1	6	3	56	49	2	16	0	7	11	1	10	0
ARKANSAS	1	0	2	2	0	0	15	0	0	0	0	5	0	0	0	0	0	1	1	0
CALIFORNIA	24	3	21	19	10	3	260	15	43	5	208	194	24	89	0	17	98	13	97	2
COLORADO	1	0	2	4	0	2	32	3	6	0	24	29	2	16	0	2	28	1	2	0
CONNECTICUT	0	0	0	0	0	0	1	0	1	0	3	4	0	1	0	0	1	1	1	0
DELAWARE	0	0	0	0	0	0	1	0	0	0	0	1	0	0	0	0	0	0	0	0
FLORIDA	5	1	1	0	0	0	62	1	4	1	42	35	0	20	0	2	23	0	7	0
GEORGIA	1	0	0	1	1	0	19	0	3	0	26	7	0	13	0	2	3	0	2	1
HAWAII	1	0	0	0	0	1	24	0	3	0	22	9	3	5	1	1	4	0	2	0
IDAHO	3	2	4	5	5	2	19	2	3	0	23	128	7	7	2	7	9	14	7	1
ILLINOIS	1	0	0	2	0	0	25	0	5	0	27	7	1	9	0	1	11	0	6	0
INDIANA	0	0	0	0	2	0	11	2	0	0	6	4	0	5	0	0	1	0	1	0
IOWA	1	0	0	3	0	0	8	0	1	0	1	7	0	4	0	0	2	3	1	0
KANSAS	0	0	1	0	0	0	19	0	0	0	11	2	1	5	0	2	1	0	1	0
KENTUCKY	0	0	1	1	0	0	5	0	1	0	4	1	1	4	0	1	1	0	0	0
LOUISIANA	3	0	0	0	1	0	16	0	0	0	5	9	0	4	0	0	0	0	0	0
MAINE	0	0	2	0	0	1	2	0	0	0	2	1	0	1	0	1	2	1	0	0
MARYLAND	0	1	0	0	0	0	10	0	1	0	11	5	0	1	0	1	7	0	4	0
MASSACHUSETTS	1	0	0	0	0	0	8	3	0	0	12	5	0	4	0	0	3	1	1	0
MICHIGAN	0	1	0	0	0	1	21	1	3	0	49	9	0	9	0	1	11	4	1	0
MINNESOTA	1	0	2	0	1	0	15	0	0	0	16	16	5	7	0	0	5	2	2	1
MISSISSIPPI	0	0	2	0	1	0	10	0	0	0	3	3	0	3	0	0	0	0	0	0
MISSOURI	0	0	0	0	1	1	17	2	4	1	16	10	1	2	0	1	3	0	0	0
MONTANA	3	1	2	2	0	0	19	2	1	2	17	55	5	6	1	4	10	4	4	0
NEBRASKA	2	0	0	0	1	0	11	0	1	1	5	11	2	2	0	0	0	1	2	0
NEVADA	4	2	2	3	3	1	34	2	9	0	24	30	4	12	0	3	5	2	8	0
NEW HAMPSHIRE	0	0	0	0	0	0	3	0	1	0	4	0	2	1	0	0	3	0	0	0
NEW JERSEY	0	0	0	0	0	0	10	0	0	0	9	0	0	4	0	0	4	1	2	0
NEW MEXICO	0	0	1	1	0	0	5	1	0	0	8	4	0	6	0	2	6	0	2	0
NEW YORK	1	0	0	1	1	0	19	0	6	0	25	6	4	10	0	2	6	0	0	0
NORTH CAROLINA	1	0	0	0	0	0	29	0	3	0	18	10	1	8	0	0	1	0	3	0
NORTH DAKOTA	1	0	0	0	0	0	20	1	1	0	4	4	0	1	0	0	0	0	0	0
OHIO	1	0	0	0	0	0	20	1	1	0	17	13	0	4	0	0	4	0	3	0
OKLAHOMA	1	0	0	0	0	0	14	0	1	0	1	5	0	6	0	1	3	0	0	0
OREGON	15	1	20	2	21	3	97	4	28	12	59	82	10	59	2	44	24	15	33	2
PENNSYLVANIA	1	0	0	0	0	0	17	0	4	0	13	11	0	9	0	0	4	0	1	0
RHODE ISLAND	0	0	0	0	0	0	0	0	0	0	1	4	0	2	0	0	1	0	0	0
SOUTH CAROLINA	1	0	2	1	0	0	16	0	2	0	3	1	1	3	0	0	2	0	3	0
SOUTH DAKOTA	0	0	0	0	2	1	3	0	0	0	2	2	0	0	0	0	1	0	0	0
TENNESSEE	0	0	3	0	0	0	24	0	1	0	18	3	0	3	0	5	2	1	4	0
TEXAS	4	2	1	2	2	0	85	4	6	0	66	29	6	29	0	1	14	3	15	0
UTAH	0	1	1	1	1	0	22	2	3	0	18	17	3	12	1	1	8	5	11	0
VERMONT	0	0	0	0	0	0	1	1	0	0	1	0	0	3	0	1	1	1	0	0
VIRGINIA	0	0	0	0	0	0	16	2	1	0	15	5	0	6	0	1	9	0	2	0
WASHINGTON	0	0	0	0	0	0	0	0	0	0	0	0	0	0	0	0	0	0	0	0
WEST VIRGINIA	0	0	0	0	0	0	2	0	0	0	5	0	0	1	0	0	1	0	0	0
WISCONSIN	2	0	0	0	0	0	14	0	0	0	17	8	0	4	0	1	5	0	1	0
WYOMING	0	2	0	0	1	0	4	0	3	0	2	3	0	3	0	0	2	1	2	1
WASHINGTON D.C.	0	0	0	0	0	0	2	0	0	0	1	2	0	0	0	0	0	0	0	0
ARGENTINA	0	0	0	0	0	0	0	0	0	0	0	0	0	0	0	0	0	0	0	0
BELIZE (BRIT HONDU)	0	0	0	0	0	0	0	0	0	0	0	0	0	0	0	0	0	0	0	0
BOLIVIA	0	0	0	0	0	0	0	0	0	0	0	0	0	0	0	0	0	0	0	0

October 2006 Totals by Location Moved From, and By County Moved To

FROM / TO	LEWIS	LINCOLN	MASON	OKANAGON	PACIFIC	PEND OREILLE	PIERCE	SAN JUAN	SKAGIT	SKAMANIA	SNOHOMISH	SPOKANE	STEVENS	THURSTON	WAHKIAKUM	WALLA WALLA	WHATCOM	WHITMAN	YAKIMA	UNKNOWN
BRAZIL	0	0	0	0	0	0	2	0	0	0	2	0	0	0	0	0	0	0	0	0
CHILE	0	0	0	0	0	0	0	0	0	0	0	0	0	0	0	0	0	1	0	0
CANAL ZONE	0	0	0	0	0	0	0	0	0	0	0	0	0	0	0	0	0	0	0	0
COLUMBIA	0	0	0	0	0	0	0	0	0	0	0	0	0	0	0	0	0	0	0	0
COSTA RICA	0	0	0	0	1	0	0	0	0	0	0	0	0	0	0	0	0	0	0	0
EL SALVADOR	0	0	0	0	0	0	0	0	0	0	1	0	0	0	0	1	0	0	0	0
EQUADOR	0	0	0	0	0	0	1	0	0	0	3	0	0	0	0	0	0	0	0	0
GUYANA	0	0	0	0	0	0	0	0	0	0	0	0	0	0	0	0	0	0	0	0
NICARAGUA	0	0	0	0	0	0	0	0	0	0	0	0	0	0	0	0	0	0	0	0
PANAMA	0	0	0	0	0	0	0	0	0	0	0	0	0	0	0	0	0	0	0	0
PERU	0	0	0	0	0	0	0	0	0	0	0	0	0	0	0	0	0	0	0	0
PARAGUAY	0	0	0	0	0	0	0	0	0	0	0	0	0	0	0	0	0	0	0	0
SURINAM	0	0	0	0	0	0	0	0	0	0	0	0	0	0	0	0	0	0	0	0
TRINIDAD	0	0	0	0	0	0	0	0	0	0	0	0	0	0	0	0	0	0	0	0
UPPER VOLTA	0	0	0	0	0	0	0	0	0	0	0	0	0	0	0	0	0	0	0	0
URUGUAY	0	0	0	0	0	0	0	0	0	0	0	0	0	0	0	0	0	0	0	0
VENEZUELA	0	0	0	0	0	0	0	0	0	0	0	0	0	0	0	0	0	0	0	0
ALGERIA	0	0	0	0	0	0	0	0	0	0	0	0	0	0	0	0	0	0	0	0
ANGOLA	0	0	0	0	0	0	0	0	0	0	0	0	0	0	0	0	0	0	0	0
CAMERON	0	0	0	0	0	0	0	0	0	0	0	0	0	0	0	0	0	0	0	0
CHAD	0	0	0	0	0	0	0	0	0	0	0	0	0	0	0	0	0	0	0	0
CONGO	0	0	0	0	0	0	0	0	0	0	0	0	0	0	0	0	0	0	0	0
C. AFRICAN REP.	0	0	0	0	0	0	0	0	0	0	0	0	0	0	0	0	0	0	0	0
BOTSWANA	0	0	0	0	0	0	0	0	0	0	0	0	0	0	0	0	0	0	0	0
BURUNDI	0	0	0	0	0	0	0	0	0	0	0	0	0	0	0	0	0	0	0	0
DAHOMEY	0	0	0	0	0	0	0	0	0	0	0	0	0	0	0	0	0	0	0	0
EQ. GUINEA	0	0	0	0	0	0	0	0	0	0	0	0	0	0	0	0	0	0	0	0
EGYPT	0	0	0	0	0	0	0	0	0	0	0	0	0	0	0	0	0	0	0	0
ETHIOPIA	0	0	0	0	0	0	0	0	0	0	0	0	0	0	0	0	0	0	0	0
GABON	0	0	0	0	0	0	0	0	0	0	0	0	0	0	0	0	0	0	0	0
GAMBIA	0	0	0	0	0	0	0	0	0	0	0	0	0	0	0	0	0	0	0	0
GHANA	0	0	0	0	0	0	0	0	0	0	0	0	0	0	0	0	0	0	0	0
GUINEA	0	0	0	0	0	0	0	0	0	0	0	0	0	0	0	0	0	0	0	0
IVORY COAST	0	0	0	0	0	0	0	0	0	0	0	0	0	0	0	0	0	0	0	0
KENYA	0	0	0	0	0	0	0	0	0	0	0	0	0	0	0	0	0	0	0	0
LIBYA	0	0	0	0	0	0	0	0	0	0	0	0	0	0	0	0	0	0	0	0
LIBERIA	0	0	0	0	0	0	0	0	0	0	0	0	0	0	0	0	0	0	0	0
MALAWI	0	0	0	0	0	0	0	0	0	0	0	0	0	0	0	0	0	0	0	0
MALAGASY	0	0	0	0	0	0	0	0	0	0	0	0	0	0	0	0	0	0	0	0
MORROCCO	0	0	0	0	0	0	0	0	0	0	0	0	0	0	0	0	0	0	0	0
MAURITANIA	0	0	0	0	0	0	0	0	0	0	0	0	0	0	0	0	0	0	0	0
MALI	0	0	0	0	0	0	0	0	0	0	0	0	0	0	0	0	0	0	0	0
NIGER	0	0	0	0	0	0	0	0	0	0	0	0	0	0	0	0	0	0	0	0
NIGERIA	0	0	0	0	0	0	0	0	0	0	0	0	0	0	0	0	0	0	0	0
RHODESIA	0	0	0	0	0	0	0	0	0	0	0	0	0	0	0	0	0	0	0	0
RWANDA	0	0	0	0	0	0	0	0	0	0	0	0	0	0	0	0	0	0	0	0
SOUTH AFRICA	0	0	0	0	0	0	0	0	0	0	0	0	0	0	0	0	0	0	0	0
SOUTH WEST AFRICA	0	0	0	0	0	0	0	0	0	0	0	0	0	0	0	0	0	0	0	0
SIERRA LEONE	0	0	0	0	0	0	0	0	0	0	0	0	0	0	0	0	0	0	0	0
SWAZILAND	0	0	0	0	0	0	0	0	0	0	0	0	0	0	0	0	0	0	0	0
SENEGAL	0	0	0	0	0	0	0	0	0	0	0	0	0	0	0	0	0	0	0	0
SOMALI REPUBLIC	0	0	0	0	0	0	0	0	0	0	0	0	0	0	0	0	0	0	0	0
SUDAN	0	0	0	0	0	0	0	0	0	0	0	0	0	0	0	0	0	0	0	0
TOGO	0	0	0	0	0	0	0	0	0	0	0	0	0	0	0	0	0	0	0	0
TUNISIA	0	0	0	0	0	0	0	0	0	0	0	0	0	0	0	0	0	0	0	0
TANZANIA	0	0	0	0	0	0	0	0	0	0	0	0	0	0	0	0	0	0	0	0

October 2006 Totals by Location Moved From, and By County Moved To

FROM / TO	LEWIS	LINCOLN	MASON	OKANAGON	PACIFIC	PEND OREILLE	PIERCE	SAN JUAN	SKAGIT	SKAMANIA	SNOHOMISH	SPOKANE	STEVENS	THURSTON	WAHKIAKUM	WALLA WALLA	WHATCOM	WHITMAN	YAKIMA	UNKNOWN
UGANDA	0	0	0	0	0	0	0	0	0	0	0	0	0	0	0	0	0	0	0	0
ZAIRE	0	0	0	0	0	0	0	0	0	0	0	0	0	0	0	0	0	0	0	0
AFGHANISTAN	0	0	0	0	0	0	0	0	0	0	0	0	0	0	0	0	0	0	0	0
BANGLADESH	0	0	0	0	0	0	0	0	0	0	0	0	0	0	0	0	0	0	0	0
BHUTAN	0	0	0	0	0	0	0	0	0	0	0	0	0	0	0	0	0	0	0	0
BURMA	0	0	0	0	0	0	0	0	0	0	0	0	0	0	0	0	0	0	0	0
BAHRAIN	0	0	0	0	0	0	0	0	0	0	0	0	0	0	0	0	0	0	0	0
CEYLON (SRI LANKA)	0	0	0	0	0	0	0	0	0	0	0	0	0	0	0	0	0	0	0	0
CHINA	0	0	0	0	0	0	0	0	0	0	0	0	0	0	0	0	0	1	0	0
CAMBODIA	0	0	0	0	0	0	0	0	0	0	0	0	0	0	0	0	0	0	0	0
CYPRUS	0	0	0	0	0	0	0	0	0	0	0	0	0	0	0	0	0	0	0	0
JORDAN	0	0	0	0	0	0	0	0	0	0	0	0	0	0	0	0	0	0	0	0
JAPAN	0	0	0	0	0	0	0	0	0	0	1	0	0	0	0	0	0	1	0	0
KUWAIT	0	0	0	0	0	0	0	0	0	0	0	0	0	0	0	0	0	1	0	0
IRAN	0	0	0	0	0	0	0	0	0	0	0	0	0	0	0	0	0	0	0	0
ISRAEL	0	0	0	0	0	0	0	0	0	0	0	0	0	0	0	0	0	0	0	0
INDIA	0	0	0	0	0	0	0	0	0	0	1	0	0	0	0	0	0	0	0	0
IRAQ	0	0	0	0	0	0	0	0	0	0	0	0	0	0	0	0	0	0	0	0
INDONESIA	0	0	0	0	0	0	0	0	0	0	0	0	0	0	0	0	0	0	0	0
KOREA	0	0	0	0	0	0	0	0	0	0	0	0	0	0	0	0	0	5	0	0
LAOS	0	0	0	0	0	0	0	0	0	0	0	0	0	0	0	0	0	0	0	0
LEBANON	0	0	0	0	0	0	0	0	0	0	0	0	0	0	0	0	0	0	0	0
MALAYSIA	0	0	0	0	0	0	0	0	0	0	0	0	0	0	0	0	0	0	0	0
MONGOLIA	0	0	0	0	0	0	0	0	0	0	0	0	0	0	0	0	0	0	0	0
NEPAL	0	0	0	0	0	0	0	0	0	0	0	0	0	0	0	0	0	0	0	0
OMAN	0	0	0	0	0	0	0	0	0	0	0	0	0	0	0	0	0	0	0	0
PAKISTAN	0	0	0	0	0	0	0	0	0	0	0	0	0	0	0	0	0	0	0	0
QATAR	0	0	0	0	0	0	0	0	0	0	0	0	0	0	0	0	0	0	0	0
SIKKIM	0	0	0	0	0	0	0	0	0	0	0	0	0	0	0	0	0	0	0	0
SYRIA	0	0	0	0	0	0	0	0	0	0	0	0	0	0	0	0	0	0	0	0
SAUDI ARABIA	0	0	0	0	0	0	0	0	0	0	0	0	0	0	0	0	0	0	0	0
SINGAPORE	0	0	0	0	0	0	0	0	0	0	0	0	0	0	0	0	0	0	0	0
TAIWAN	0	0	0	0	0	0	0	0	0	0	0	0	0	0	0	0	0	2	0	0
THAILAND	0	0	0	0	0	0	0	0	0	0	0	0	0	0	0	0	0	0	0	0
TURKEY	0	0	0	0	0	0	0	0	0	0	0	0	0	0	0	0	0	0	0	0
USSR	0	0	0	0	0	0	0	0	0	0	0	0	0	0	0	0	0	0	0	0
UNITED ARAB EMIRATE	0	0	0	0	0	0	0	0	0	0	0	0	0	0	0	0	0	0	0	0
VIETNAM	0	0	0	0	0	0	2	0	0	0	0	0	0	0	0	0	0	0	0	0
YEMEN	0	0	0	0	0	0	0	0	0	0	0	0	0	0	0	0	0	0	0	0
AUSTRIA	0	0	0	0	0	0	0	0	0	0	0	0	0	0	0	0	0	0	0	0
BULGARIA	0	0	0	0	0	0	0	0	0	0	0	0	0	0	0	0	0	0	0	0
BELGIUM	0	0	0	0	0	0	0	0	0	0	0	0	0	0	0	0	0	0	0	0
DENMARK	0	0	0	0	0	0	0	0	0	0	0	0	0	0	0	0	0	0	0	0
ENGLAND	0	0	0	0	0	0	0	0	0	0	0	1	0	0	0	0	0	1	0	0
FRANCE	0	0	0	0	0	0	0	0	0	0	0	0	0	0	0	0	0	0	0	0
FINLAND	0	0	0	0	0	0	0	0	0	0	0	0	0	0	0	0	0	0	0	0
CZECHOSLAVAKIA	0	0	0	0	0	0	0	0	0	0	0	0	0	0	0	0	0	0	0	0
GREECE	0	0	0	0	0	0	0	0	0	0	0	0	0	0	0	0	0	0	0	0
GERMANY	0	0	0	0	0	0	4	0	0	0	3	0	0	2	0	1	0	0	0	0
IRELAND	0	0	0	0	0	0	0	0	0	0	0	0	0	0	0	0	0	0	0	0
ITALY	0	0	0	0	0	0	0	0	0	0	0	0	0	0	0	0	0	0	0	0
HUNGARY	0	0	0	0	0	0	0	0	0	0	0	0	0	0	0	0	0	0	0	0
LUXEMBOURG	0	0	0	0	0	0	0	0	0	0	0	0	0	0	0	0	0	0	0	0
NETHERLANDS	0	0	0	0	0	0	0	0	0	0	0	0	0	0	0	0	0	0	0	0
NORWAY	0	0	0	0	0	0	0	0	0	0	0	0	0	0	0	0	0	0	0	0
POLAND	0	0	0	0	0	0	2	0	0	0	0	0	0	0	0	0	0	0	0	0

October 2006 Totals by Location Moved From, and By County Moved To

FROM / TO	LEWIS	LINCOLN	MASON	OKANAGON	PACIFIC	PEND O'REILLE	PIERCE	SAN JUAN	SKAGIT	SKAMANIA	SNOHOMISH	SPOKANE	STEVENS	THURSTON	WAHIAKIUM	WALLA WALLA	WHATCOM	WHITMAN	YAKIMA	UNKNOWN
SPAIN	0	0	0	0	0	0	0	0	0	0	0	0	0	0	0	0	0	0	0	0
SWITZERLAND	0	0	0	0	0	0	0	0	0	0	0	0	0	0	0	0	0	0	0	0
SWEDEN	0	0	0	0	0	0	0	0	0	0	0	0	0	0	0	0	0	0	0	0
ROMANIA	0	0	0	0	0	0	0	0	0	0	1	0	0	0	0	0	0	0	0	0
YUGOSLAVIA	0	0	0	0	0	0	0	0	0	0	0	0	0	0	0	0	0	0	0	0
ALBANIA	0	0	0	0	0	0	0	0	0	0	0	0	0	0	0	0	0	0	0	0
ANDORRA	0	0	0	0	0	0	0	0	0	0	0	0	0	0	0	0	0	0	0	0
AMERICAN SAMOA	0	0	0	0	0	0	11	0	0	0	0	0	0	0	0	0	0	0	0	0
BORNEO	0	0	0	0	0	0	0	0	0	0	0	0	0	0	0	0	0	0	0	0
CUBA	0	0	0	0	0	0	0	0	0	0	0	0	0	0	0	0	0	0	0	0
BERMUDA	0	0	0	0	0	0	0	0	0	0	0	0	0	0	0	0	0	0	0	0
DOMINICAN REPUBLIC	0	0	0	0	0	0	0	0	0	0	0	0	0	0	0	0	0	0	0	0
FIJI	0	0	0	0	0	0	0	0	0	0	0	0	0	0	0	0	0	0	0	0
GUAM	0	0	0	0	0	0	14	0	0	0	2	1	0	3	0	0	0	0	0	0
HAITI	0	0	0	0	0	0	0	0	0	0	0	0	0	0	0	0	0	0	0	0
JAMAICA	0	0	0	0	0	0	0	0	0	0	0	0	0	0	0	0	0	0	0	0
NEW ZEALAND	0	0	0	0	0	0	0	0	0	0	0	0	0	0	0	0	0	0	0	0
PORTUGAL	0	0	0	0	0	0	0	0	0	0	0	0	0	0	0	0	0	0	0	0
PHILIPPINES	0	0	0	0	0	0	3	0	0	0	0	0	0	0	0	0	0	0	0	0
PUERTO RICO	0	0	0	0	0	0	8	0	0	0	1	1	0	0	0	1	2	0	0	0
TAHITI	0	0	0	0	0	0	0	0	0	0	0	0	0	0	0	0	0	0	0	0
TONGA	0	0	0	0	0	0	0	0	0	0	0	0	0	0	0	0	0	0	0	0
VIRGIN ISLANDS	0	0	0	0	0	0	0	0	0	0	0	0	0	0	0	0	0	0	0	0
WEST SAMOA	0	0	0	0	0	0	0	0	0	0	0	0	0	0	0	0	0	0	0	0
AUSTRALIA	0	0	0	0	0	0	0	0	0	0	0	0	0	0	0	0	0	0	0	0
ANTARTICA	0	0	0	0	0	0	0	0	0	0	0	0	0	0	0	0	0	0	0	0
ICELAND	0	0	0	0	0	0	0	0	0	0	0	0	0	0	0	0	0	0	0	0
GREENLAND	0	0	0	0	0	0	0	0	0	0	0	0	0	0	0	0	0	0	0	0
MEXICO	2	0	5	2	3	0	11	0	0	1	11	1	0	1	0	3	1	0	40	3
ALBERTA	0	0	0	0	0	0	1	0	0	0	0	4	0	1	0	0	0	1	0	0
BRITISH COLUMBIA	0	1	0	0	0	0	4	0	1	0	10	2	0	1	0	0	19	0	1	0
MANITOBA	0	0	0	0	0	0	0	0	0	0	0	0	0	0	0	0	0	0	0	0
NEW BRUNSWICK	0	0	0	0	0	0	0	0	0	0	0	0	0	0	0	0	0	0	0	0
NEWFOUNDLAND	0	0	0	0	0	0	0	0	0	0	0	0	0	0	0	0	0	0	0	0
NOVA SCOTIA	0	0	0	0	0	0	0	0	0	0	0	0	0	0	0	0	1	0	0	0
ONTARIO	0	0	0	0	0	0	2	0	0	0	9	0	0	1	0	0	1	0	0	0
PRINCE EDWARD IS.	0	0	0	0	0	0	0	0	0	0	0	0	0	0	0	0	0	0	0	0
QUEBEC	0	0	0	0	0	0	1	0	0	0	0	0	0	0	0	0	0	0	0	0
SASKATCHEWAN	0	0	0	0	0	0	0	0	0	0	1	0	0	0	0	0	1	0	0	0
NORTHWEST TERRITORY	0	0	0	0	0	0	0	0	0	0	0	0	0	0	0	0	0	0	0	0
YUKON TERRITORY	0	0	0	0	0	0	0	0	0	0	0	0	0	0	0	0	0	0	0	0
UNKNOWN	2	0	0	0	1	0	4	0	0	0	3	0	0	2	0	2	0	0	0	0
** TOTAL **	92	24	81	53	63	18	1270	50	164	26	991	881	90	446	8	123	386	93	290	12