



STATE OF WASHINGTON
DEPARTMENT OF LICENSING
PO Box 9035 • Olympia, Washington 98507-9035

October 13, 2006

Washington State Drivers Report for September 2006

The monthly report for September 2006 tabulates Washington drivers' license (WDL) activity. The table below summarizes WDL migration in and out of Washington State. It also identifies the top three in-migration states. This data generates a net increase series. The reported month of surrendered WDLs is a reflection of the month Washington received the information and not when the driver left Washington. Therefore, the net increase is an estimate of net migration. Beginning with the April 1998 data, this report and supporting documentation are available via e-mail at the address below. Our formats are PDF for the report and Excel for the data files.

During the month of September (August 26, 2006 to September 30, 2006), a total of 18,981 out-of-state drivers obtained a Washington driver license. This is 3,407 more than the 15,574 who obtained licenses in September of 2005 (August 27, 2005 to September 24, 2005). Net migration to Washington for September 2006 increased by 11,243 drivers. For the 12 months ending September 2006, 164,852 out-of-state drivers obtained a Washington driver license, a 16 percent increase over the same month last year.

The table below displays data using a 12-month moving sum to help smooth out the monthly variance and reveal the trend. The graphs on the attached file display the results of this smoothing. The first graph plots new drivers moving into Washington as well as the net increase.

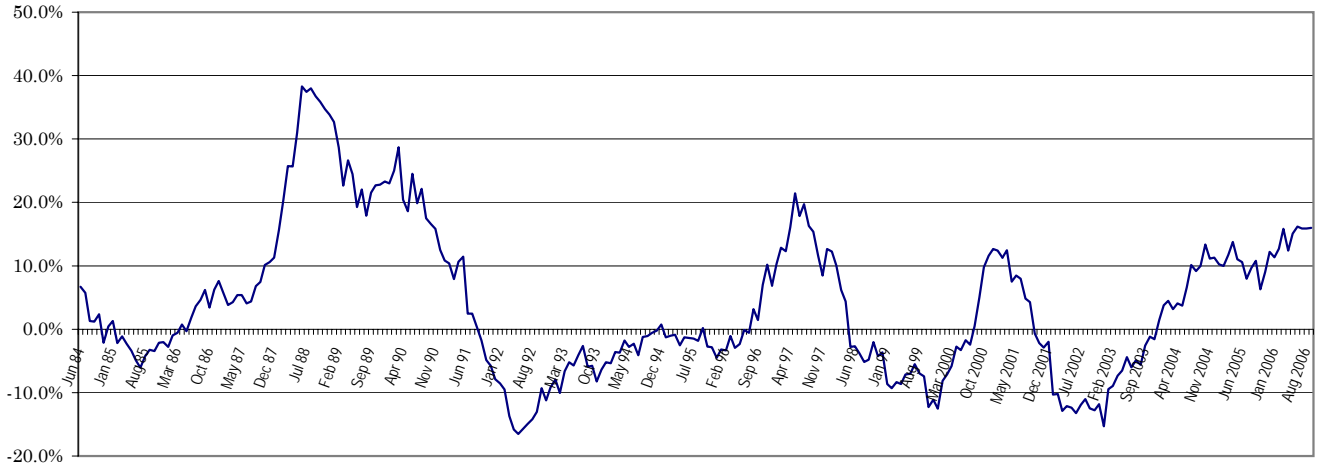
	Sep 2006			Year Ending Sep 2006		
	2005	2006	% Change	2005	2006	% Change
Total Drivers In	15,574	18,981	21.9	142,140	164,852	16.0
California	3,902	4,230	8.4	33,964	38,021	11.9
Oregon	1,825	2,178	19.3	18,381	20,333	10.6
Texas	665	921	38.5	6,113	7,542	23.4
Returned WDL	9,368	7,738	-17.4	70,023	70,678	0.9
Net Increase	6,206	11,243	81.2	72,117	94,174	30.6

Alice Vogel, Economic Analyst
Department of Licensing
Research and Planning Office
Highways and Licensing Building
Olympia, WA 98501-48001
(360) 902-3986
FAX: (360) 753-7500
E-Mail: avogel@dol.wa.gov

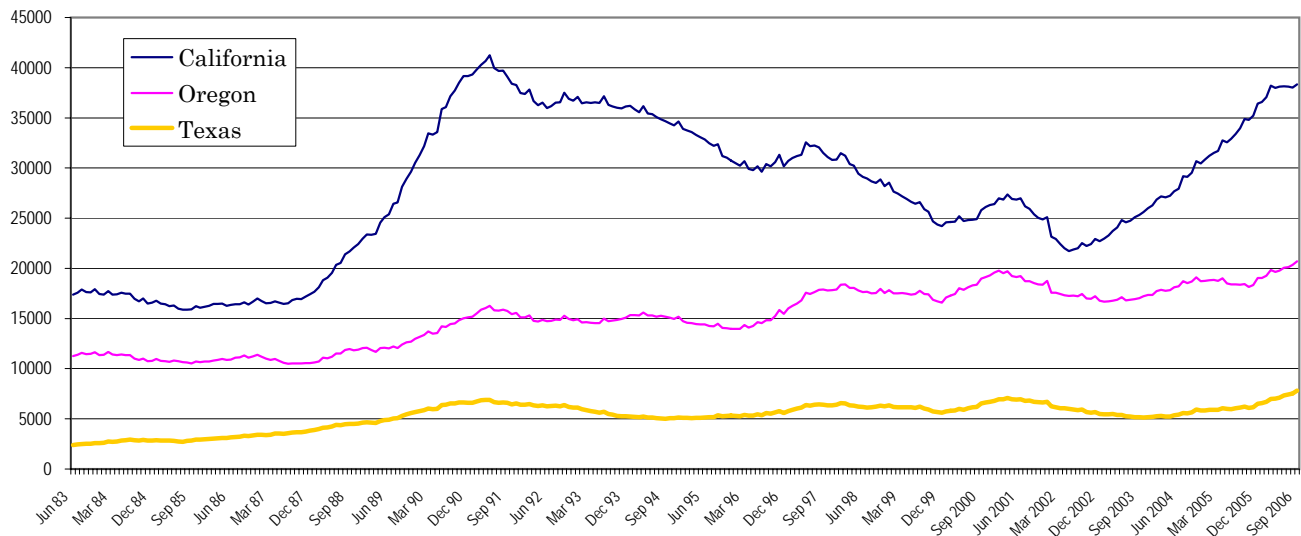
**Washington State Driver's Licenses
(12 Month Moving Sum)**



**% Change Year Ago
(12 Month Moving Sum)**



**Largest States
(12 Months Moving Sum)**



Net Increase States

Month: **September 2006**

<u>State</u>	<u>IN</u>	<u>OUT</u>	<u>Net in Migration</u>
ALABAMA	109	45	64
ALASKA	364	0	364
ARIZONA	772	222	550
ARKANSAS	104	149	(45)
CALIFORNIA	4230	424	3,806
COLORADO	560	331	229
CONNECTICUT	106	64	42
DELAWARE	21	12	9
FLORIDA	756	312	444
GEORGIA	294	211	83
HAWAII	301	103	198
IDAHO	722	1298	(576)
ILLINOIS	471	193	278
INDIANA	189	56	133
IOWA	103	58	45
KANSAS	152	101	51
KENTUCKY	89	49	40
LOUISIANA	124	43	81
MAINE	44	0	44
MARYLAND	196	77	119
MASSACHUSETTS	225	0	225
MICHIGAN	377	139	238
MINNESOTA	233	135	98
MISSISSIPPI	48	25	23
MISSOURI	212	120	92
MONTANA	347	0	347
NEBRASKA	92	79	13
NEVADA	414	441	(27)
NEW HAMPSHIRE	64	29	35
NEW JERSEY	209	74	135
NEW MEXICO	143	0	143
NEW YORK	431	247	184
NORTH CAROLINA	251	113	138
NORTH DAKOTA	41	47	(6)
OHIO	313	142	171
OKLAHOMA	136	116	20
OREGON	2178	933	1,245
PENNSYLVANIA	227	118	109
RHODE ISLAND	28	11	17
SOUTH CAROLINA	64	77	(13)
SOUTH DAKOTA	54	151	(97)
TENNESSEE	307	83	224
TEXAS	921	478	443
UTAH	401	1	400
VERMONT	51	13	38
VIRGINIA	366	197	169
WASHINGTON	3	0	3
WEST VIRGINIA	28	0	28
WISCONSIN	222	62	160
WYOMING	64	86	(22)
WASH. DC	47	11	36
Total States	18,204	7,676	10,528

September 2006 Totals by Location Moved From, and By County Moved To

FROM/TO	TOTAL	GRAYS																			
		ADAMS	ASOTIN	BENTON	CHELAN	CLALLAM	CLARK	COLUMBIA	COWLITZ	DOUGLAS	FERRY	FRANKLIN	GARFIELD	GRANT	HARBOR	ISLAND	JEFFERSON	KING	KITSAP	KITTITAS	KLCKITAT
ALABAMA	109	0	0	5	0	0	5	0	0	1	0	0	0	1	1	1	2	41	8	1	0
ALASKA	364	0	2	6	6	6	18	0	5	2	1	1	0	4	5	6	8	106	17	0	2
ARIZONA	772	2	0	17	3	18	54	0	8	4	1	11	2	10	9	9	5	243	33	2	2
ARKANSAS	104	0	2	4	1	0	5	0	1	0	2	0	0	0	2	2	0	43	2	1	0
CALIFORNIA	4230	9	8	74	32	101	321	0	45	16	5	41	0	21	27	103	32	1582	166	16	17
COLORADO	560	0	0	19	3	8	25	0	5	2	0	5	0	5	8	5	3	216	17	1	4
CONNECTICUT	106	0	0	3	0	3	9	0	0	0	0	0	0	1	0	1	1	50	6	0	0
DELAWARE	21	0	0	0	0	1	1	0	0	0	0	0	0	0	0	2	0	6	0	0	0
FLORIDA	756	1	2	15	3	9	36	3	5	3	0	2	0	6	3	21	7	288	37	5	1
GEORGIA	294	0	0	2	4	0	16	0	1	0	1	3	0	2	4	6	1	136	11	0	1
HAWAII	301	0	0	3	1	5	13	0	3	0	0	0	0	0	1	10	4	110	33	2	2
IDAHO	722	2	65	31	8	11	32	1	12	1	0	5	2	7	4	7	1	94	20	8	3
ILLINOIS	471	0	0	3	2	4	51	0	8	1	0	5	0	1	0	7	1	216	24	2	2
INDIANA	189	0	0	4	1	3	5	0	1	0	0	2	0	3	2	5	1	90	3	2	0
IOWA	103	0	0	4	2	0	3	0	1	1	0	2	0	0	1	4	1	35	7	0	1
KANSAS	152	0	0	2	0	1	7	0	7	0	0	1	0	2	1	0	3	44	5	1	2
KENTUCKY	89	0	0	2	0	1	5	0	1	0	0	1	0	0	0	1	0	26	6	0	0
LOUISIANA	124	0	0	3	0	4	5	0	3	0	0	0	0	2	1	5	0	50	1	0	1
MAINE	44	1	0	0	2	2	6	0	0	0	0	0	0	0	0	4	0	18	2	2	0
MARYLAND	196	0	0	3	0	0	6	0	0	0	0	0	0	2	2	2	1	94	13	0	0
MASSACHUSETTS	225	0	0	1	0	0	6	0	0	1	0	0	0	0	0	2	2	161	6	1	0
MICHIGAN	377	0	0	1	2	1	23	0	3	0	0	0	0	4	2	8	3	187	4	1	0
MINNESOTA	233	1	0	5	2	1	9	0	5	0	0	0	0	1	1	2	0	105	15	2	0
MISSISSIPPI	48	0	0	1	1	0	3	0	2	0	0	0	0	0	0	2	0	14	4	0	1
MISSOURI	212	1	0	4	1	0	15	2	3	0	0	0	0	5	3	5	0	80	7	5	1
MONTANA	347	0	1	11	0	3	14	0	1	0	1	3	0	4	9	0	0	94	17	5	2
NEBRASKA	92	0	0	1	0	4	6	0	1	0	0	0	0	1	2	0	0	33	6	1	0
NEVADA	414	0	2	23	3	9	27	0	18	2	0	3	0	6	3	5	2	117	18	1	2
NEW HAMPSHIRE	64	0	0	4	1	1	4	0	0	0	0	0	0	0	0	4	0	29	1	0	0
NEW JERSEY	209	0	0	2	0	2	14	0	0	0	0	0	0	0	1	2	1	115	8	0	0
NEW MEXICO	143	1	2	5	2	1	2	0	2	0	0	0	0	2	2	3	0	45	4	1	2
NEW YORK	431	0	0	7	3	1	13	0	1	0	1	0	0	1	2	6	3	261	5	3	0
NORTH CAROLINA	251	0	0	5	3	0	18	1	1	0	0	7	0	1	2	4	1	92	15	1	1
NORTH DAKOTA	41	0	0	0	0	0	2	0	0	1	0	0	0	0	0	1	0	16	1	0	0
OHIO	313	0	1	4	0	4	17	0	4	0	0	1	0	0	0	2	0	140	17	3	0
OKLAHOMA	136	0	0	3	0	1	10	0	1	0	0	1	0	2	2	0	0	42	6	0	2
OREGON	2178	2	7	77	15	22	711	2	99	6	5	20	2	28	19	11	11	431	32	13	45
PENNSYLVANIA	227	0	1	3	3	0	6	0	3	0	0	0	0	1	0	4	1	119	10	1	0
RHODE ISLAND	28	0	0	1	0	0	3	0	0	0	0	0	0	0	0	0	0	14	2	0	0
SOUTH CAROLINA	64	0	0	0	0	2	1	0	0	2	0	0	0	0	0	3	0	17	7	0	0
SOUTH DAKOTA	54	0	1	3	0	0	4	0	4	0	0	0	0	1	0	0	0	14	4	0	0
TENNESSEE	307	2	0	5	1	4	13	0	6	2	0	2	0	0	3	2	0	177	8	0	0
TEXAS	921	1	0	20	10	10	53	1	7	2	0	3	0	4	7	20	3	357	29	6	1
UTAH	401	0	1	10	2	6	31	0	7	0	0	3	0	8	4	2	0	129	13	2	3
VERMONT	51	0	0	0	0	0	1	0	1	0	0	0	0	3	0	2	1	24	5	0	0
VIRGINIA	366	1	0	8	0	5	7	0	2	0	0	0	0	2	0	9	1	166	21	4	3
WASHINGTON	3	0	0	0	0	0	0	0	0	0	0	0	0	0	0	0	0	3	0	0	0
WEST VIRGINIA	28	0	0	0	1	1	2	0	0	0	0	0	0	0	1	0	0	8	1	0	0
WISCONSIN	222	0	0	5	1	4	10	0	2	0	0	2	0	2	0	1	3	92	11	4	0
WYOMING	64	0	0	0	1	0	1	0	1	4	0	1	0	0	0	0	1	21	1	0	0
WASHINGTON D.C.	47	0	0	0	0	0	0	0	0	0	0	0	0	0	0	1	0	34	2	0	0
ARGENTINA	0	0	0	0	0	0	0	0	0	0	0	0	0	0	0	0	0	0	0	0	0
BELIZE (BRIT HONDU)	0	0	0	0	0	0	0	0	0	0	0	0	0	0	0	0	0	0	0	0	0
BOLIVIA	0	0	0	0	0	0	0	0	0	0	0	0	0	0	0	0	0	0	0	0	0

September 2006 Totals by Location Moved From, and By County Moved To

FROM / TO	TOTAL	GRAYS																			
		ADAMS	ASOTIN	BENTON	CHELAN	CLALLAM	CLARK	COLUMBIA	COWLITZ	DOUGLAS	FERRY	FRANKLIN	GARFIELD	GRANT	HARBOR	ISLAND	JEFFERSON	KING	KITSAP	KITTITAS	KLCKITAT
BRAZIL	55	0	0	0	0	0	0	0	1	0	0	0	0	0	0	0	0	47	0	0	0
CHILE	3	0	0	0	0	0	2	0	0	0	0	0	0	0	0	0	0	0	0	0	0
CANAL ZONE	0	0	0	0	0	0	0	0	0	0	0	0	0	0	0	0	0	0	0	0	0
COLUMBIA	5	0	0	0	0	0	2	0	0	0	0	0	0	0	0	0	0	3	0	0	0
COSTA RICA	4	0	0	0	0	0	0	0	0	0	0	0	0	0	0	0	0	4	0	0	0
EL SALVADOR	7	0	0	0	0	0	0	0	0	0	1	0	0	0	0	0	0	3	0	0	0
EQUADOR	6	0	0	0	0	0	0	0	0	0	0	0	0	0	0	0	0	6	0	0	0
GUYANA	0	0	0	0	0	0	0	0	0	0	0	0	0	0	0	0	0	0	0	0	0
NICARAGUA	0	0	0	0	0	0	0	0	0	0	0	0	0	0	0	0	0	0	0	0	0
PANAMA	0	0	0	0	0	0	0	0	0	0	0	0	0	0	0	0	0	0	0	0	0
PERU	5	0	0	0	0	0	0	0	0	0	0	0	0	0	0	0	0	4	0	0	0
PARAGUAY	0	0	0	0	0	0	0	0	0	0	0	0	0	0	0	0	0	0	0	0	0
SURINAM	0	0	0	0	0	0	0	0	0	0	0	0	0	0	0	0	0	0	0	0	0
TRINIDAD	0	0	0	0	0	0	0	0	0	0	0	0	0	0	0	0	0	0	0	0	0
UPPER VOLTA	0	0	0	0	0	0	0	0	0	0	0	0	0	0	0	0	0	0	0	0	0
URUGUAY	0	0	0	0	0	0	0	0	0	0	0	0	0	0	0	0	0	0	0	0	0
VENEZUELA	0	0	0	0	0	0	0	0	0	0	0	0	0	0	0	0	0	0	0	0	0
ALGERIA	0	0	0	0	0	0	0	0	0	0	0	0	0	0	0	0	0	0	0	0	0
ANGOLA	0	0	0	0	0	0	0	0	0	0	0	0	0	0	0	0	0	0	0	0	0
CAMERON	0	0	0	0	0	0	0	0	0	0	0	0	0	0	0	0	0	0	0	0	0
CHAD	0	0	0	0	0	0	0	0	0	0	0	0	0	0	0	0	0	0	0	0	0
CONGO	0	0	0	0	0	0	0	0	0	0	0	0	0	0	0	0	0	0	0	0	0
C. AFRICAN REP.	0	0	0	0	0	0	0	0	0	0	0	0	0	0	0	0	0	0	0	0	0
BOTSWANA	0	0	0	0	0	0	0	0	0	0	0	0	0	0	0	0	0	0	0	0	0
BURUNDI	0	0	0	0	0	0	0	0	0	0	0	0	0	0	0	0	0	0	0	0	0
DAHOMEY	0	0	0	0	0	0	0	0	0	0	0	0	0	0	0	0	0	0	0	0	0
EQ. GUINEA	0	0	0	0	0	0	0	0	0	0	0	0	0	0	0	0	0	0	0	0	0
EGYPT	0	0	0	0	0	0	0	0	0	0	0	0	0	0	0	0	0	0	0	0	0
ETHIOPIA	0	0	0	0	0	0	0	0	0	0	0	0	0	0	0	0	0	0	0	0	0
GABON	0	0	0	0	0	0	0	0	0	0	0	0	0	0	0	0	0	0	0	0	0
GAMBIA	0	0	0	0	0	0	0	0	0	0	0	0	0	0	0	0	0	0	0	0	0
GHANA	0	0	0	0	0	0	0	0	0	0	0	0	0	0	0	0	0	0	0	0	0
GUINEA	0	0	0	0	0	0	0	0	0	0	0	0	0	0	0	0	0	0	0	0	0
IVORY COAST	0	0	0	0	0	0	0	0	0	0	0	0	0	0	0	0	0	0	0	0	0
KENYA	1	0	0	0	0	0	0	0	0	0	0	0	0	0	0	0	0	1	0	0	0
LIBYA	0	0	0	0	0	0	0	0	0	0	0	0	0	0	0	0	0	0	0	0	0
LIBERIA	0	0	0	0	0	0	0	0	0	0	0	0	0	0	0	0	0	0	0	0	0
MALAWI	0	0	0	0	0	0	0	0	0	0	0	0	0	0	0	0	0	0	0	0	0
MALAGASY	1	0	0	0	0	0	0	0	0	0	0	0	0	0	0	0	0	1	0	0	0
MORROCCO	0	0	0	0	0	0	0	0	0	0	0	0	0	0	0	0	0	0	0	0	0
MAURITANIA	0	0	0	0	0	0	0	0	0	0	0	0	0	0	0	0	0	0	0	0	0
MALI	0	0	0	0	0	0	0	0	0	0	0	0	0	0	0	0	0	0	0	0	0
NIGER	0	0	0	0	0	0	0	0	0	0	0	0	0	0	0	0	0	0	0	0	0
NIGERIA	0	0	0	0	0	0	0	0	0	0	0	0	0	0	0	0	0	0	0	0	0
RHODESIA	0	0	0	0	0	0	0	0	0	0	0	0	0	0	0	0	0	0	0	0	0
RWANDA	0	0	0	0	0	0	0	0	0	0	0	0	0	0	0	0	0	0	0	0	0
SOUTH AFRICA	1	0	0	0	0	0	0	0	0	0	0	0	0	0	0	0	0	1	0	0	0
SOUTH WEST AFRICA	0	0	0	0	0	0	0	0	0	0	0	0	0	0	0	0	0	0	0	0	0
SIERRA LEONE	0	0	0	0	0	0	0	0	0	0	0	0	0	0	0	0	0	0	0	0	0
SWAZILAND	0	0	0	0	0	0	0	0	0	0	0	0	0	0	0	0	0	0	0	0	0
SENEGAL	0	0	0	0	0	0	0	0	0	0	0	0	0	0	0	0	0	0	0	0	0
SOMALI REPUBLIC	0	0	0	0	0	0	0	0	0	0	0	0	0	0	0	0	0	0	0	0	0
SUDAN	0	0	0	0	0	0	0	0	0	0	0	0	0	0	0	0	0	0	0	0	0
TOGO	0	0	0	0	0	0	0	0	0	0	0	0	0	0	0	0	0	0	0	0	0
TUNISIA	0	0	0	0	0	0	0	0	0	0	0	0	0	0	0	0	0	0	0	0	0
TANZANIA	0	0	0	0	0	0	0	0	0	0	0	0	0	0	0	0	0	0	0	0	0

September 2006 Totals by Location Moved From, and By County Moved To

FROM / TO	TOTAL	GRAYS																			
		ADAMS	ASOTIN	BENTON	CHELAN	CLALLAM	CLARK	COLUMBIA	COWLITZ	DOUGLAS	FERRY	FRANKLIN	GARFIELD	GRANT	HARBOR	ISLAND	JEFFERSON	KING	KITSAP	KITTITAS	KLCKITAT
UGANDA	0	0	0	0	0	0	0	0	0	0	0	0	0	0	0	0	0	0	0	0	0
ZAIRE	0	0	0	0	0	0	0	0	0	0	0	0	0	0	0	0	0	0	0	0	0
AFGHANISTAN	0	0	0	0	0	0	0	0	0	0	0	0	0	0	0	0	0	0	0	0	0
BANGLADESH	0	0	0	0	0	0	0	0	0	0	0	0	0	0	0	0	0	0	0	0	0
BHUTAN	0	0	0	0	0	0	0	0	0	0	0	0	0	0	0	0	0	0	0	0	0
BURMA	0	0	0	0	0	0	0	0	0	0	0	0	0	0	0	0	0	0	0	0	0
BAHRAIN	2	0	0	0	0	0	0	0	0	0	0	0	0	0	0	0	0	2	0	0	0
CEYLON (SRI LANKA)	0	0	0	0	0	0	0	0	0	0	0	0	0	0	0	0	0	0	0	0	0
CHINA	0	0	0	0	0	0	0	0	0	0	0	0	0	0	0	0	0	0	0	0	0
CAMBODIA	0	0	0	0	0	0	0	0	0	0	0	0	0	0	0	0	0	0	0	0	0
CYPRUS	0	0	0	0	0	0	0	0	0	0	0	0	0	0	0	0	0	0	0	0	0
JORDAN	0	0	0	0	0	0	0	0	0	0	0	0	0	0	0	0	0	0	0	0	0
JAPAN	4	0	0	0	0	0	0	0	0	0	0	0	0	0	0	0	0	3	0	0	0
KUWAIT	1	0	0	0	0	0	0	0	0	0	0	0	0	0	0	0	0	1	0	0	0
IRAN	0	0	0	0	0	0	0	0	0	0	0	0	0	0	0	0	0	0	0	0	0
ISRAEL	0	0	0	0	0	0	0	0	0	0	0	0	0	0	0	0	0	0	0	0	0
INDIA	15	0	0	0	0	0	0	0	0	0	0	0	0	0	0	0	0	13	0	0	0
IRAQ	0	0	0	0	0	0	0	0	0	0	0	0	0	0	0	0	0	0	0	0	0
INDONESIA	7	0	0	0	0	0	0	0	0	0	0	0	0	0	0	0	0	3	0	0	0
KOREA	11	0	0	0	0	0	0	0	0	0	0	0	0	0	0	0	0	7	0	0	0
LAOS	0	0	0	0	0	0	0	0	0	0	0	0	0	0	0	0	0	0	0	0	0
LEBANON	0	0	0	0	0	0	0	0	0	0	0	0	0	0	0	0	0	0	0	0	0
MALAYSIA	0	0	0	0	0	0	0	0	0	0	0	0	0	0	0	0	0	0	0	0	0
MONGOLIA	6	0	0	0	0	0	0	0	0	0	0	0	0	0	0	0	0	5	0	0	0
NEPAL	0	0	0	0	0	0	0	0	0	0	0	0	0	0	0	0	0	0	0	0	0
OMAN	0	0	0	0	0	0	0	0	0	0	0	0	0	0	0	0	0	0	0	0	0
PAKISTAN	1	0	0	0	0	0	0	0	0	0	0	0	0	0	0	0	0	1	0	0	0
QATAR	0	0	0	0	0	0	0	0	0	0	0	0	0	0	0	0	0	0	0	0	0
SIKKIM	0	0	0	0	0	0	0	0	0	0	0	0	0	0	0	0	0	0	0	0	0
SYRIA	0	0	0	0	0	0	0	0	0	0	0	0	0	0	0	0	0	0	0	0	0
SAUDI ARABIA	2	0	0	0	0	0	0	0	0	0	0	0	0	0	0	0	0	1	0	0	0
SINGAPORE	1	0	0	0	0	0	0	0	0	0	0	0	0	0	0	0	0	1	0	0	0
TAIWAN	0	0	0	0	0	0	0	0	0	0	0	0	0	0	0	0	0	0	0	0	0
THAILAND	1	0	0	0	0	0	0	0	0	0	0	0	0	0	0	0	0	1	0	0	0
TURKEY	2	0	0	0	0	0	0	0	0	0	0	0	0	0	0	0	0	2	0	0	0
USSR	1	0	0	0	0	0	0	0	0	0	0	0	0	0	0	0	0	0	0	0	0
UNITED ARAB EMIRATE	0	0	0	0	0	0	0	0	0	0	0	0	0	0	0	0	0	0	0	0	0
VIETNAM	3	0	0	0	0	0	0	0	0	0	0	0	0	0	0	0	0	2	0	0	0
YEMEN	0	0	0	0	0	0	0	0	0	0	0	0	0	0	0	0	0	0	0	0	0
AUSTRIA	1	0	0	0	0	0	0	0	0	0	0	0	0	0	0	0	0	0	0	0	0
BULGARIA	1	0	0	0	0	0	0	0	0	0	0	0	0	0	0	0	0	1	0	0	0
BELGIUM	1	0	0	0	0	0	0	0	0	0	0	0	0	0	0	0	0	1	0	0	0
DENMARK	1	0	0	0	0	0	0	0	0	0	0	0	0	0	0	0	0	0	0	0	0
ENGLAND	10	0	0	0	0	0	0	0	0	0	0	0	0	0	0	0	0	8	1	0	0
FRANCE	2	0	0	0	0	0	0	0	0	0	0	0	0	0	0	0	0	2	0	0	0
FINLAND	1	0	0	0	0	0	0	0	0	0	0	0	0	0	0	0	0	1	0	0	0
CZECHOSLAVAKIA	0	0	0	0	0	0	0	0	0	0	0	0	0	0	0	0	0	0	0	0	0
GREECE	2	0	0	0	0	0	0	0	0	0	0	0	0	0	0	0	0	1	0	0	0
GERMANY	25	0	0	0	0	1	0	0	0	0	0	0	0	0	0	0	0	22	0	0	0
IRELAND	0	0	0	0	0	0	0	0	0	0	0	0	0	0	0	0	0	0	0	0	0
ITALY	1	0	0	0	0	0	0	0	0	0	0	0	0	0	0	0	0	1	0	0	0
HUNGARY	1	0	0	0	0	0	0	0	0	0	0	0	0	0	0	0	0	1	0	0	0
LUXEMBOURG	0	0	0	0	0	0	0	0	0	0	0	0	0	0	0	0	0	0	0	0	0
NETHERLANDS	2	0	0	0	0	0	0	0	0	0	0	0	0	0	0	0	0	2	0	0	0
NORWAY	0	0	0	0	0	0	0	0	0	0	0	0	0	0	0	0	0	0	0	0	0
POLAND	0	0	0	0	0	0	0	0	0	0	0	0	0	0	0	0	0	0	0	0	0

September 2006 Totals by Location Moved From, and By County Moved To

FROM / TO	TOTAL	GRAYS																			
		ADAMS	ASOTIN	BENTON	CHELAN	CLALLAM	CLARK	COLUMBIA	COWLITZ	DOUGLAS	FERRY	FRANKLIN	GARFIELD	GRANT	HARBOR	ISLAND	JEFFERSON	KING	KITSAP	KITTITAS	KLCKITAT
SPAIN	0	0	0	0	0	0	0	0	0	0	0	0	0	0	0	0	0	0	0	0	0
SWITZERLAND	0	0	0	0	0	0	0	0	0	0	0	0	0	0	0	0	0	0	0	0	0
SWEDEN	1	0	0	0	0	0	0	0	0	0	0	0	0	0	0	0	0	1	0	0	0
ROMANIA	14	0	0	0	0	0	7	0	0	0	0	0	0	0	0	0	0	5	0	0	0
YUGOSLAVIA	1	0	0	0	0	0	0	0	0	0	0	0	0	0	0	0	0	1	0	0	0
ALBANIA	0	0	0	0	0	0	0	0	0	0	0	0	0	0	0	0	0	0	0	0	0
ANDORRA	0	0	0	0	0	0	0	0	0	0	0	0	0	0	0	0	0	0	0	0	0
AMERICAN SAMOA	29	0	0	0	0	0	0	0	0	0	0	0	0	0	0	0	0	13	2	0	0
BORNEO	0	0	0	0	0	0	0	0	0	0	0	0	0	0	0	0	0	0	0	0	0
CUBA	0	0	0	0	0	0	0	0	0	0	0	0	0	0	0	0	0	0	0	0	0
BERMUDA	0	0	0	0	0	0	0	0	0	0	0	0	0	0	0	0	0	0	0	0	0
DOMINICAN REPUBLIC	0	0	0	0	0	0	0	0	0	0	0	0	0	0	0	0	0	0	0	0	0
FIJI	0	0	0	0	0	0	0	0	0	0	0	0	0	0	0	0	0	0	0	0	0
GUAM	44	0	0	0	0	0	4	0	1	0	0	0	0	0	0	1	0	18	5	0	0
HAITI	0	0	0	0	0	0	0	0	0	0	0	0	0	0	0	0	0	0	0	0	0
JAMAICA	0	0	0	0	0	0	0	0	0	0	0	0	0	0	0	0	0	0	0	0	0
NEW ZEALAND	1	0	0	0	0	0	0	0	0	0	0	0	0	0	0	0	0	0	0	0	0
PORTUGAL	3	0	0	0	0	0	0	0	0	0	0	0	0	0	0	0	0	3	0	0	0
PHILIPPINES	6	0	0	0	0	0	0	0	0	0	0	0	0	0	0	0	0	3	2	0	0
PUERTO RICO	28	0	0	0	0	0	0	0	0	0	0	0	0	0	0	1	0	9	1	0	0
TAHITI	0	0	0	0	0	0	0	0	0	0	0	0	0	0	0	0	0	0	0	0	0
TONGA	0	0	0	0	0	0	0	0	0	0	0	0	0	0	0	0	0	0	0	0	0
VIRGIN ISLANDS	0	0	0	0	0	0	0	0	0	0	0	0	0	0	0	0	0	0	0	0	0
WEST SAMOA	0	0	0	0	0	0	0	0	0	0	0	0	0	0	0	0	0	0	0	0	0
AUSTRALIA	9	0	0	0	0	0	0	0	0	0	0	0	0	0	0	0	0	8	0	0	0
ANTARTICA	0	0	0	0	0	0	0	0	0	0	0	0	0	0	0	0	0	0	0	0	0
ICELAND	0	0	0	0	0	0	0	0	0	0	0	0	0	0	0	0	0	0	0	0	0
GREENLAND	0	0	0	0	0	0	0	0	0	0	0	0	0	0	0	0	0	0	0	0	0
MEXICO	193	0	0	6	16	0	13	0	1	4	0	7	0	6	1	0	0	51	2	0	0
ALBERTA	21	0	0	0	0	0	0	0	0	0	0	0	0	0	0	1	0	13	0	0	0
BRITISH COLUMBIA	91	0	0	0	0	1	4	0	0	0	0	0	0	0	0	0	0	51	0	0	0
MANITOBA	0	0	0	0	0	0	0	0	0	0	0	0	0	0	0	0	0	0	0	0	0
NEW BRUNSWICK	0	0	0	0	0	0	0	0	0	0	0	0	0	0	0	0	0	0	0	0	0
NEWFOUNDLAND	0	0	0	0	0	0	0	0	0	0	0	0	0	0	0	0	0	0	0	0	0
NOVA SCOTIA	2	0	0	0	0	0	0	0	0	0	0	0	0	0	0	0	0	1	0	0	0
ONTARIO	66	0	0	0	0	0	2	0	0	0	0	0	0	0	0	0	0	52	0	0	1
PRINCE EDWARD IS.	0	0	0	0	0	0	0	0	0	0	0	0	0	0	0	0	0	0	0	0	0
QUEBEC	2	0	0	0	0	0	1	0	0	0	0	0	0	0	0	0	0	1	0	0	0
SASKATCHEWAN	5	0	0	0	0	0	0	0	0	0	0	0	0	0	0	0	0	2	0	0	0
NORTHWEST TERRITORY	1	0	0	0	0	0	0	0	0	0	0	0	0	0	0	0	0	0	0	0	0
YUKON TERRITORY	0	0	0	0	0	0	0	0	0	0	0	0	0	0	0	0	0	0	0	0	0
UNKNOWN	67	0	0	1	1	0	11	0	2	0	0	0	0	3	0	0	0	22	5	1	2
** TOTAL **	18981	24	95	416	137	261	1695	10	285	55	17	133	6	152	135	305	104	7031	709	98	104

September 2006 Totals by Location Moved From, and By County Moved To

FROM / TO	PENDING																SAND				WALLA				
	LEWIS	LINCOLN	MASON	OKANAGON	PACIFIC	OREILLE	PIERCE	JUAN	SKAGIT	SKAMANIA	SNOHOMISH	SPOKANE	STEVENS	THURSTON	WAHIAKUM	WALLA	WHATCOM	WHITMAN	YAKIMA	UNKNOWN					
ALABAMA	2	1	0	0	0	0	13	0	3	0	8	6	0	6	0	1	2	0	1	0					
ALASKA	4	0	9	2	2	0	30	0	6	0	28	33	6	12	0	6	21	2	8	0					
ARIZONA	6	2	6	2	0	5	59	3	10	2	90	69	9	21	1	5	22	5	22	0					
ARKANSAS	2	0	4	0	0	0	13	0	1	0	4	7	3	3	0	0	2	0	0	0					
CALIFORNIA	39	9	34	21	9	5	329	23	49	5	351	274	19	119	2	40	170	15	99	2					
COLORADO	4	0	4	5	1	0	46	6	7	0	53	38	2	16	0	6	27	8	11	0					
CONNECTICUT	0	0	0	0	0	0	13	0	1	0	8	2	0	3	0	0	3	2	0	0					
DELAWARE	0	0	0	0	0	0	3	0	1	0	3	0	0	4	0	0	0	0	0	0					
FLORIDA	9	2	1	2	1	0	85	4	11	0	87	38	6	22	0	1	23	5	12	0					
GEORGIA	0	0	1	0	0	0	28	0	1	0	33	15	0	11	0	2	9	0	6	0					
HAWAII	1	0	2	0	1	0	24	0	5	0	26	22	0	9	0	4	12	4	4	0					
IDAHO	6	2	3	2	3	8	33	3	12	1	35	178	8	23	0	12	23	41	15	0					
ILLINOIS	1	0	2	3	1	0	46	0	8	0	26	22	0	16	0	1	12	3	3	0					
INDIANA	1	0	0	0	0	0	18	0	2	1	16	8	3	6	0	2	6	1	3	0					
IOWA	2	2	0	0	0	0	6	0	0	0	13	11	1	0	0	1	5	0	0	0					
KANSAS	4	0	1	0	0	0	16	0	3	0	27	7	2	5	0	2	4	3	2	0					
KENTUCKY	0	0	1	2	0	0	11	0	3	0	7	6	1	10	0	0	3	1	1	0					
LOUISIANA	0	0	0	0	1	0	23	0	0	0	7	7	2	4	0	1	2	0	1	1					
MAINE	0	0	0	0	0	0	2	0	0	0	0	1	0	2	0	0	1	0	1	0					
MARYLAND	0	0	3	0	0	1	17	1	2	0	23	5	0	15	0	1	2	2	1	0					
MASSACHUSETTS	0	0	0	1	0	0	16	1	0	0	13	1	0	5	0	5	0	1	2	0					
MICHIGAN	1	0	1	0	0	0	34	1	4	0	48	14	0	18	0	4	9	0	4	0					
MINNESOTA	1	0	1	0	0	0	22	0	2	0	19	17	3	4	0	0	14	0	1	0					
MISSISSIPPI	1	0	0	0	0	0	9	0	1	0	2	3	0	0	0	0	2	1	1	0					
MISSOURI	1	1	2	2	0	0	22	1	6	0	8	12	0	8	0	4	9	2	2	0					
MONTANA	2	0	4	4	1	0	33	2	9	1	26	57	6	10	0	2	12	5	8	0					
NEBRASKA	0	0	0	0	0	0	11	0	0	0	4	2	3	6	0	2	3	2	3	1					
NEVADA	6	1	1	2	1	0	40	0	2	0	32	45	4	13	0	2	11	6	7	0					
NEW HAMPSHIRE	0	0	0	0	0	0	3	0	0	0	8	2	0	1	0	0	5	1	0	0					
NEW JERSEY	0	0	3	0	0	0	14	0	1	0	24	4	0	8	0	0	6	1	3	0					
NEW MEXICO	3	0	1	1	0	0	14	1	3	0	13	12	2	4	0	2	9	3	1	0					
NEW YORK	5	0	4	1	0	1	36	4	2	0	31	13	0	10	0	2	12	2	1	0					
NORTH CAROLINA	0	0	2	0	1	0	37	0	7	0	25	14	1	6	0	0	5	0	1	0					
NORTH DAKOTA	1	0	0	0	0	0	5	0	1	0	0	8	0	0	0	0	5	0	0	0					
OHIO	0	0	3	1	0	0	42	1	4	1	25	18	2	11	0	0	6	3	3	0					
OKLAHOMA	5	0	0	3	0	0	18	0	3	0	15	8	3	5	0	0	3	1	2	0					
OREGON	38	1	13	11	17	4	114	17	23	13	106	82	7	53	3	40	29	9	39	1					
PENNSYLVANIA	0	0	0	0	0	0	13	0	3	0	21	13	2	8	0	2	11	2	0	0					
RHODE ISLAND	0	0	0	0	0	0	2	0	0	0	3	0	0	3	0	0	0	0	0	0					
SOUTH CAROLINA	0	0	0	0	0	0	13	0	2	0	11	5	0	0	0	0	1	0	0	0					
SOUTH DAKOTA	1	1	1	1	0	0	2	0	1	0	5	1	0	4	0	2	1	0	3	0					
TENNESSEE	4	0	0	1	4	2	34	0	2	0	15	4	0	6	0	4	4	0	2	0					
TEXAS	6	0	5	5	3	2	108	0	17	1	85	41	3	53	0	5	26	7	20	0					
UTAH	6	1	1	6	0	0	43	0	7	0	36	35	1	23	0	1	4	5	11	0					
VERMONT	0	0	4	0	1	0	1	1	0	0	1	1	0	2	0	1	2	0	0	0					
VIRGINIA	4	0	3	0	1	0	42	2	2	0	33	18	2	13	0	5	7	2	3	0					
WASHINGTON	0	0	0	0	0	0	0	0	0	0	0	0	0	0	0	0	0	0	0	0					
WEST VIRGINIA	0	0	0	1	0	0	5	0	0	0	4	2	0	1	0	0	0	0	1	0					
WISCONSIN	0	0	0	1	0	0	16	0	3	2	24	12	0	10	0	1	10	3	2	1					
WYOMING	0	0	0	1	0	0	6	0	3	0	4	8	1	3	0	0	2	1	4	0					
WASHINGTON D.C.	0	0	2	0	0	0	3	0	0	0	1	0	0	1	0	0	2	0	1	0					
ARGENTINA	0	0	0	0	0	0	0	0	0	0	0	0	0	0	0	0	0	0	0	0					
BELIZE (BRIT HONDU)	0	0	0	0	0	0	0	0	0	0	0	0	0	0	0	0	0	0	0	0					
BOLIVIA	0	0	0	0	0	0	0	0	0	0	0	0	0	0	0	0	0	0	0	0					

September 2006 Totals by Location Moved From, and By County Moved To

FROM / TO	LEWIS	LINCOLN	MASON	OKANAGON	PACIFIC	PEND OREILLE	PIERCE	SAN JUAN	SKAGIT	SKAMANIA	SNOHOMISH	SPOKANE	STEVENS	THURSTON	WAHKIAKUM	WALLA WALLA	WHATCOM	WHITMAN	YAKIMA	UNKNOWN
BRAZIL	0	0	0	0	0	1	0	5	0	0	0	1	0	0	0	0	0	0	0	0
CHILE	0	0	0	0	0	0	0	0	0	0	0	0	0	0	0	0	1	0	0	0
CANAL ZONE	0	0	0	0	0	0	0	0	0	0	0	0	0	0	0	0	0	0	0	0
COLUMBIA	0	0	0	0	0	0	0	0	0	0	0	0	0	0	0	0	0	0	0	0
COSTA RICA	0	0	0	0	0	0	0	0	0	0	0	0	0	0	0	0	0	0	0	0
EL SALVADOR	0	0	0	0	0	0	1	0	0	0	2	0	0	0	0	0	0	0	0	0
EQUADOR	0	0	0	0	0	0	0	0	0	0	0	0	0	0	0	0	0	0	0	0
GUYANA	0	0	0	0	0	0	0	0	0	0	0	0	0	0	0	0	0	0	0	0
NICARAGUA	0	0	0	0	0	0	0	0	0	0	0	0	0	0	0	0	0	0	0	0
PANAMA	0	0	0	0	0	0	0	0	0	0	0	0	0	0	0	0	0	0	0	0
PERU	0	0	0	0	0	0	0	0	0	0	1	0	0	0	0	0	0	0	0	0
PARAGUAY	0	0	0	0	0	0	0	0	0	0	0	0	0	0	0	0	0	0	0	0
SURINAM	0	0	0	0	0	0	0	0	0	0	0	0	0	0	0	0	0	0	0	0
TRINIDAD	0	0	0	0	0	0	0	0	0	0	0	0	0	0	0	0	0	0	0	0
UPPER VOLTA	0	0	0	0	0	0	0	0	0	0	0	0	0	0	0	0	0	0	0	0
URUGUAY	0	0	0	0	0	0	0	0	0	0	0	0	0	0	0	0	0	0	0	0
VENEZUELA	0	0	0	0	0	0	0	0	0	0	0	0	0	0	0	0	0	0	0	0
ALGERIA	0	0	0	0	0	0	0	0	0	0	0	0	0	0	0	0	0	0	0	0
ANGOLA	0	0	0	0	0	0	0	0	0	0	0	0	0	0	0	0	0	0	0	0
CAMERON	0	0	0	0	0	0	0	0	0	0	0	0	0	0	0	0	0	0	0	0
CHAD	0	0	0	0	0	0	0	0	0	0	0	0	0	0	0	0	0	0	0	0
CONGO	0	0	0	0	0	0	0	0	0	0	0	0	0	0	0	0	0	0	0	0
C. AFRICAN REP.	0	0	0	0	0	0	0	0	0	0	0	0	0	0	0	0	0	0	0	0
BOTSWANA	0	0	0	0	0	0	0	0	0	0	0	0	0	0	0	0	0	0	0	0
BURUNDI	0	0	0	0	0	0	0	0	0	0	0	0	0	0	0	0	0	0	0	0
DAHOMEY	0	0	0	0	0	0	0	0	0	0	0	0	0	0	0	0	0	0	0	0
EQ. GUINEA	0	0	0	0	0	0	0	0	0	0	0	0	0	0	0	0	0	0	0	0
EGYPT	0	0	0	0	0	0	0	0	0	0	0	0	0	0	0	0	0	0	0	0
ETHIOPIA	0	0	0	0	0	0	0	0	0	0	0	0	0	0	0	0	0	0	0	0
GABON	0	0	0	0	0	0	0	0	0	0	0	0	0	0	0	0	0	0	0	0
GAMBIA	0	0	0	0	0	0	0	0	0	0	0	0	0	0	0	0	0	0	0	0
GHANA	0	0	0	0	0	0	0	0	0	0	0	0	0	0	0	0	0	0	0	0
GUINEA	0	0	0	0	0	0	0	0	0	0	0	0	0	0	0	0	0	0	0	0
IVORY COAST	0	0	0	0	0	0	0	0	0	0	0	0	0	0	0	0	0	0	0	0
KENYA	0	0	0	0	0	0	0	0	0	0	0	0	0	0	0	0	0	0	0	0
LIBYA	0	0	0	0	0	0	0	0	0	0	0	0	0	0	0	0	0	0	0	0
LIBERIA	0	0	0	0	0	0	0	0	0	0	0	0	0	0	0	0	0	0	0	0
MALAWI	0	0	0	0	0	0	0	0	0	0	0	0	0	0	0	0	0	0	0	0
MALAGASY	0	0	0	0	0	0	0	0	0	0	0	0	0	0	0	0	0	0	0	0
MORROCCO	0	0	0	0	0	0	0	0	0	0	0	0	0	0	0	0	0	0	0	0
MAURITANIA	0	0	0	0	0	0	0	0	0	0	0	0	0	0	0	0	0	0	0	0
MALI	0	0	0	0	0	0	0	0	0	0	0	0	0	0	0	0	0	0	0	0
NIGER	0	0	0	0	0	0	0	0	0	0	0	0	0	0	0	0	0	0	0	0
NIGERIA	0	0	0	0	0	0	0	0	0	0	0	0	0	0	0	0	0	0	0	0
RHODESIA	0	0	0	0	0	0	0	0	0	0	0	0	0	0	0	0	0	0	0	0
RWANDA	0	0	0	0	0	0	0	0	0	0	0	0	0	0	0	0	0	0	0	0
SOUTH AFRICA	0	0	0	0	0	0	0	0	0	0	0	0	0	0	0	0	0	0	0	0
SOUTH WEST AFRICA	0	0	0	0	0	0	0	0	0	0	0	0	0	0	0	0	0	0	0	0
SIERRA LEONE	0	0	0	0	0	0	0	0	0	0	0	0	0	0	0	0	0	0	0	0
SWAZILAND	0	0	0	0	0	0	0	0	0	0	0	0	0	0	0	0	0	0	0	0
SENEGAL	0	0	0	0	0	0	0	0	0	0	0	0	0	0	0	0	0	0	0	0
SOMALI REPUBLIC	0	0	0	0	0	0	0	0	0	0	0	0	0	0	0	0	0	0	0	0
SUDAN	0	0	0	0	0	0	0	0	0	0	0	0	0	0	0	0	0	0	0	0
TOGO	0	0	0	0	0	0	0	0	0	0	0	0	0	0	0	0	0	0	0	0
TUNISIA	0	0	0	0	0	0	0	0	0	0	0	0	0	0	0	0	0	0	0	0
TANZANIA	0	0	0	0	0	0	0	0	0	0	0	0	0	0	0	0	0	0	0	0

September 2006 Totals by Location Moved From, and By County Moved To

FROM / TO	LEWIS	LINCOLN	MASON	OKANAGON	PACIFIC	PEND OREILLE	PIERCE	SAN JUAN	SKAGIT	SKAMANIA	SNOHOMISH	SPOKANE	STEVENS	THURSTON	WAHKIAKUM	WALLA WALLA	WHATCOM	WHITMAN	YAKIMA	UNKNOWN
UGANDA	0	0	0	0	0	0	0	0	0	0	0	0	0	0	0	0	0	0	0	0
ZAIRE	0	0	0	0	0	0	0	0	0	0	0	0	0	0	0	0	0	0	0	0
AFGHANISTAN	0	0	0	0	0	0	0	0	0	0	0	0	0	0	0	0	0	0	0	0
BANGLADESH	0	0	0	0	0	0	0	0	0	0	0	0	0	0	0	0	0	0	0	0
BHUTAN	0	0	0	0	0	0	0	0	0	0	0	0	0	0	0	0	0	0	0	0
BURMA	0	0	0	0	0	0	0	0	0	0	0	0	0	0	0	0	0	0	0	0
BAHRAIN	0	0	0	0	0	0	0	0	0	0	0	0	0	0	0	0	0	0	0	0
CEYLON (SRI LANKA)	0	0	0	0	0	0	0	0	0	0	0	0	0	0	0	0	0	0	0	0
CHINA	0	0	0	0	0	0	0	0	0	0	0	0	0	0	0	0	0	0	0	0
CAMBODIA	0	0	0	0	0	0	0	0	0	0	0	0	0	0	0	0	0	0	0	0
CYPRUS	0	0	0	0	0	0	0	0	0	0	0	0	0	0	0	0	0	0	0	0
JORDAN	0	0	0	0	0	0	0	0	0	0	0	0	0	0	0	0	0	0	0	0
JAPAN	0	0	0	0	0	0	0	0	0	0	0	1	0	0	0	0	0	0	0	0
KUWAIT	0	0	0	0	0	0	0	0	0	0	0	0	0	0	0	0	0	0	0	0
IRAN	0	0	0	0	0	0	0	0	0	0	0	0	0	0	0	0	0	0	0	0
ISRAEL	0	0	0	0	0	0	0	0	0	0	0	0	0	0	0	0	0	0	0	0
INDIA	0	0	0	0	0	0	0	0	0	0	0	0	0	0	0	0	0	2	0	0
IRAQ	0	0	0	0	0	0	0	0	0	0	0	0	0	0	0	0	0	0	0	0
INDONESIA	0	0	0	0	0	0	2	0	1	0	1	0	0	0	0	0	0	0	0	0
KOREA	0	0	0	0	0	0	0	0	0	0	0	0	0	2	0	0	0	2	0	0
LAOS	0	0	0	0	0	0	0	0	0	0	0	0	0	0	0	0	0	0	0	0
LEBANON	0	0	0	0	0	0	0	0	0	0	0	0	0	0	0	0	0	0	0	0
MALAYSIA	0	0	0	0	0	0	0	0	0	0	0	0	0	0	0	0	0	0	0	0
MONGOLIA	0	0	0	0	0	0	0	0	0	0	1	0	0	0	0	0	0	0	0	0
NEPAL	0	0	0	0	0	0	0	0	0	0	0	0	0	0	0	0	0	0	0	0
OMAN	0	0	0	0	0	0	0	0	0	0	0	0	0	0	0	0	0	0	0	0
PAKISTAN	0	0	0	0	0	0	0	0	0	0	0	0	0	0	0	0	0	0	0	0
QATAR	0	0	0	0	0	0	0	0	0	0	0	0	0	0	0	0	0	0	0	0
SIKKIM	0	0	0	0	0	0	0	0	0	0	0	0	0	0	0	0	0	0	0	0
SYRIA	0	0	0	0	0	0	0	0	0	0	0	0	0	0	0	0	0	0	0	0
SAUDI ARABIA	0	0	0	0	0	0	0	0	0	0	0	0	0	0	0	0	0	1	0	0
SINGAPORE	0	0	0	0	0	0	0	0	0	0	0	0	0	0	0	0	0	0	0	0
TAIWAN	0	0	0	0	0	0	0	0	0	0	0	0	0	0	0	0	0	0	0	0
THAILAND	0	0	0	0	0	0	0	0	0	0	0	0	0	0	0	0	0	0	0	0
TURKEY	0	0	0	0	0	0	0	0	0	0	0	0	0	0	0	0	0	0	0	0
USSR	0	0	0	0	0	0	0	0	0	0	0	1	0	0	0	0	0	0	0	0
UNITED ARAB EMIRATE	0	0	0	0	0	0	0	0	0	0	0	0	0	0	0	0	0	0	0	0
VIETNAM	0	0	0	0	0	0	1	0	0	0	0	0	0	0	0	0	0	0	0	0
YEMEN	0	0	0	0	0	0	0	0	0	0	0	0	0	0	0	0	0	0	0	0
AUSTRIA	0	0	0	0	0	0	0	0	0	0	1	0	0	0	0	0	0	0	0	0
BULGARIA	0	0	0	0	0	0	0	0	0	0	0	0	0	0	0	0	0	0	0	0
BELGIUM	0	0	0	0	0	0	0	0	0	0	0	0	0	0	0	0	0	0	0	0
DENMARK	0	0	0	0	0	0	0	0	0	0	0	0	0	1	0	0	0	0	0	0
ENGLAND	0	0	0	0	0	0	0	0	0	0	1	0	0	0	0	0	0	0	0	0
FRANCE	0	0	0	0	0	0	0	0	0	0	0	0	0	0	0	0	0	0	0	0
FINLAND	0	0	0	0	0	0	0	0	0	0	0	0	0	0	0	0	0	0	0	0
CZECHOSLAVAKIA	0	0	0	0	0	0	0	0	0	0	0	0	0	0	0	0	0	0	0	0
GREECE	0	0	0	0	0	0	0	0	0	0	0	0	0	0	0	0	0	1	0	0
GERMANY	0	0	0	0	0	0	1	0	0	0	0	1	0	0	0	0	0	0	0	0
IRELAND	0	0	0	0	0	0	0	0	0	0	0	0	0	0	0	0	0	0	0	0
ITALY	0	0	0	0	0	0	0	0	0	0	0	0	0	0	0	0	0	0	0	0
HUNGARY	0	0	0	0	0	0	0	0	0	0	0	0	0	0	0	0	0	0	0	0
LUXEMBOURG	0	0	0	0	0	0	0	0	0	0	0	0	0	0	0	0	0	0	0	0
NETHERLANDS	0	0	0	0	0	0	0	0	0	0	0	0	0	0	0	0	0	0	0	0
NORWAY	0	0	0	0	0	0	0	0	0	0	0	0	0	0	0	0	0	0	0	0
POLAND	0	0	0	0	0	0	0	0	0	0	0	0	0	0	0	0	0	0	0	0

September 2006 Totals by Location Moved From, and By County Moved To

FROM / TO	LEWIS	LINCOLN	MASON	OKANAGON	PACIFIC	PEND OREILLE	PIERCE	SAN JUAN	SKAGIT	SKAMANIA	SNOHOMISH	SPOKANE	STEVENS	THURSTON	WAHIAKUM	WALLA WALLA	WHATCOM	WHITMAN	YAKIMA	UNKNOWN
SPAIN	0	0	0	0	0	0	0	0	0	0	0	0	0	0	0	0	0	0	0	0
SWITZERLAND	0	0	0	0	0	0	0	0	0	0	0	0	0	0	0	0	0	0	0	0
SWEDEN	0	0	0	0	0	0	0	0	0	0	0	0	0	0	0	0	0	0	0	0
ROMANIA	0	0	0	0	0	0	1	0	0	0	1	0	0	0	0	0	0	0	0	0
YUGOSLAVIA	0	0	0	0	0	0	0	0	0	0	0	0	0	0	0	0	0	0	0	0
ALBANIA	0	0	0	0	0	0	0	0	0	0	0	0	0	0	0	0	0	0	0	0
ANDORRA	0	0	0	0	0	0	0	0	0	0	0	0	0	0	0	0	0	0	0	0
AMERICAN SAMOA	0	0	1	0	0	0	11	0	0	0	1	0	0	0	0	0	1	0	0	0
BORNEO	0	0	0	0	0	0	0	0	0	0	0	0	0	0	0	0	0	0	0	0
CUBA	0	0	0	0	0	0	0	0	0	0	0	0	0	0	0	0	0	0	0	0
BERMUDA	0	0	0	0	0	0	0	0	0	0	0	0	0	0	0	0	0	0	0	0
DOMINICAN REPUBLIC	0	0	0	0	0	0	0	0	0	0	0	0	0	0	0	0	0	0	0	0
FIJI	0	0	0	0	0	0	0	0	0	0	0	0	0	0	0	0	0	0	0	0
GUAM	0	0	1	0	0	0	9	0	1	0	4	0	0	0	0	0	0	0	0	0
HAITI	0	0	0	0	0	0	0	0	0	0	0	0	0	0	0	0	0	0	0	0
JAMAICA	0	0	0	0	0	0	0	0	0	0	0	0	0	0	0	0	0	0	0	0
NEW ZEALAND	0	0	0	0	0	0	0	0	0	0	1	0	0	0	0	0	0	0	0	0
PORTUGAL	0	0	0	0	0	0	0	0	0	0	0	0	0	0	0	0	0	0	0	0
PHILIPPINES	0	0	0	0	0	0	0	0	0	0	0	0	0	0	0	1	0	0	0	0
PUERTO RICO	0	0	1	0	0	0	5	0	1	0	6	2	0	0	0	0	0	2	0	0
TAHITI	0	0	0	0	0	0	0	0	0	0	0	0	0	0	0	0	0	0	0	0
TONGA	0	0	0	0	0	0	0	0	0	0	0	0	0	0	0	0	0	0	0	0
VIRGIN ISLANDS	0	0	0	0	0	0	0	0	0	0	0	0	0	0	0	0	0	0	0	0
WEST SAMOA	0	0	0	0	0	0	0	0	0	0	0	0	0	0	0	0	0	0	0	0
AUSTRALIA	0	0	0	0	0	0	0	0	0	0	0	1	0	0	0	0	0	0	0	0
ANTARTICA	0	0	0	0	0	0	0	0	0	0	0	0	0	0	0	0	0	0	0	0
ICELAND	0	0	0	0	0	0	0	0	0	0	0	0	0	0	0	0	0	0	0	0
GREENLAND	0	0	0	0	0	0	0	0	0	0	0	0	0	0	0	0	0	0	0	0
MEXICO	0	0	5	2	0	0	9	0	0	0	20	1	0	1	0	3	0	0	44	1
ALBERTA	0	1	0	1	0	0	1	0	0	0	0	1	0	2	0	0	1	0	0	0
BRITISH COLUMBIA	0	0	2	2	0	1	0	1	0	0	10	1	1	6	0	0	11	0	0	0
MANITOBA	0	0	0	0	0	0	0	0	0	0	0	0	0	0	0	0	0	0	0	0
NEW BRUNSWICK	0	0	0	0	0	0	0	0	0	0	0	0	0	0	0	0	0	0	0	0
NEWFOUNDLAND	0	0	0	0	0	0	0	0	0	0	0	0	0	0	0	0	0	0	0	0
NOVA SCOTIA	0	0	0	0	0	0	0	0	0	0	0	1	0	0	0	0	0	0	0	0
ONTARIO	1	0	0	0	0	0	1	0	0	0	6	0	0	0	0	0	3	0	0	0
PRINCE EDWARD IS.	0	0	0	0	0	0	0	0	0	0	0	0	0	0	0	0	0	0	0	0
QUEBEC	0	0	0	0	0	0	0	0	0	0	0	0	0	0	0	0	0	0	0	0
SASKATCHEWAN	0	0	0	0	0	0	0	0	0	0	1	0	0	0	0	0	0	0	2	0
NORTHWEST TERRITORY	0	0	0	0	0	0	0	0	0	0	1	0	0	0	0	0	0	0	0	0
YUKON TERRITORY	0	0	0	0	0	0	0	0	0	0	0	0	0	0	0	0	0	0	0	0
UNKNOWN	2	0	2	0	0	0	7	0	2	0	2	0	0	0	0	0	1	1	1	1
** TOTAL **	169	24	134	86	49	29	1627	72	238	27	1548	1211	103	608	6	174	576	158	362	8