



STATE OF WASHINGTON
DEPARTMENT OF LICENSING
PO Box 9035 • Olympia, Washington 98507-9035

October 1, 2008

Washington State Drivers Report for September 2008

The monthly report for September 2008 tabulates Washington drivers' license (WDL) activity. The table below summarizes WDL migration in and out of Washington State. It also identifies the top three in-migration states. This data generates a net increase series. The reported month of surrendered WDLs is a reflection of the month Washington received the information and not when the driver left Washington. Therefore, the net increase is an estimate of net migration. Beginning with the April 1998 data, this report and supporting documentation are available via e-mail at the address below. Our formats are PDF for the report and Excel for the data files.

During the month of September (August 30, 2008 to September 27, 2008), a total of 13,673 out-of-state drivers obtained a Washington driver license. This is 1,541 fewer than the 15,214 who obtained licenses in September of 2007 (August 25, 2007 to September 29, 2007). Net migration to Washington for September 2008 was 7,934 drivers, compared to 11,700 the same month last year. For the 12 months ending September 2008, 141,071 out-of-state drivers obtained a Washington driver license, a decrease over the same period a year ago of 3.5 percent.

The table below displays data using a 12-month moving sum to help smooth out the monthly variance and reveal the trend. The graphs on the attached file display the results of this smoothing. The first graph plots new drivers moving into Washington as well as the net increase.

	Sep 2008			Year Ending Sep 2008		
	2007	2008	% Change	2007	2008	% Change
Total Drivers In	15,214	13,673	-10.1	146,172	141,071	-3.5
California	3,125	2,598	-16.9	31,436	28,018	-10.9
Oregon	1,943	1,798	-7.5	18,322	18,309	-0.1
Texas	704	623	-11.5	7,070	6,789	-4.0
Returned WDL*	3,514	5,739	63.3	71,083	70,282	-1.1
Net Increase	11,700	7,934	-32.2	75,089	70,789	-5.7

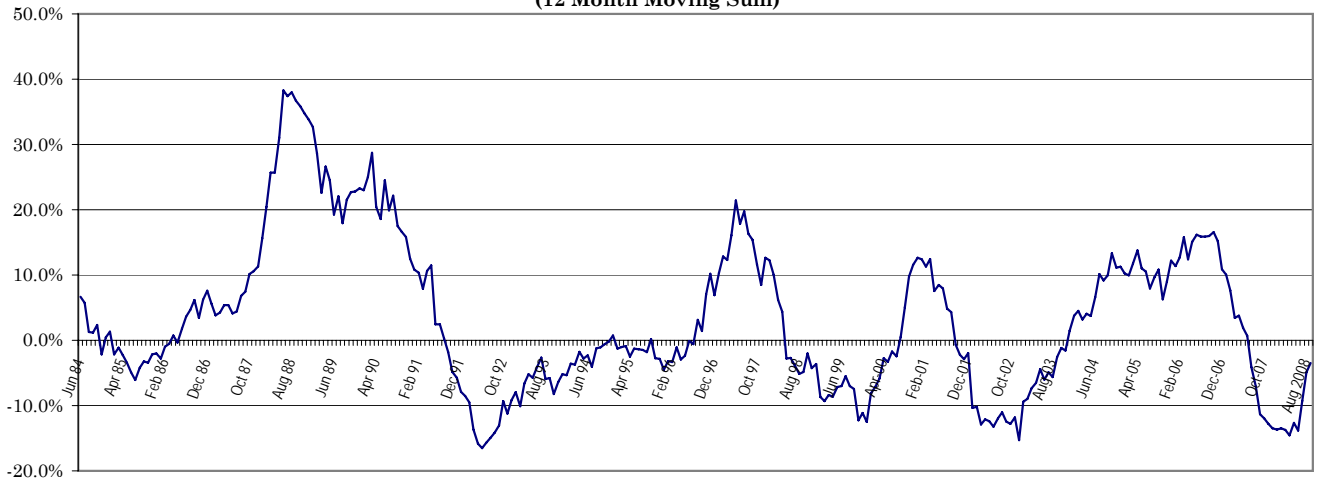
* Reliability of the surrendered license data is limited by inconsistencies (e.g. incomplete reporting and delayed reporting) in the notification process of other

Alice Vogel, Economic Analyst
Department of Licensing
Office of Budget and Economic Analysis
Highways and Licensing Building
Olympia, WA 98501-48018
(360) 902-3986
FAX: (360) 753-7500
E-Mail: avogel@dol.wa.gov

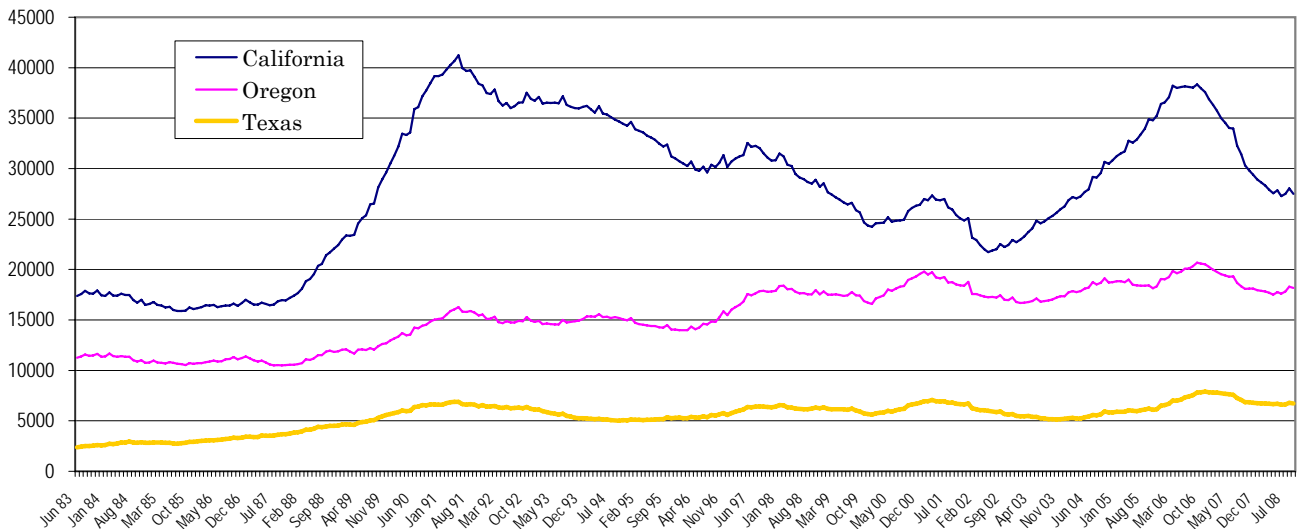
**Washington State Driver's Licenses
(12 Month Moving Sum)**



**% Change Year Ago
(12 Month Moving Sum)**



**Largest States
(12 Months Moving Sum)**



Net Increase States

Month: **September 2008**

State	IN	OUT	Net in Migration
ALABAMA	64	16	48
ALASKA	309	0	309
ARIZONA	582	0	582
ARKANSAS	72	0	72
CALIFORNIA	2598	31	2,567
COLORADO	394	16	378
CONNECTICUT	80	66	14
DELAWARE	18	0	18
FLORIDA	565	294	271
GEORGIA	250	458	(208)
HAWAII	217	103	114
IDAHO	577	1201	(624)
ILLINOIS	340	55	285
INDIANA	119	122	(3)
IOWA	92	1	91
KANSAS	137	128	9
KENTUCKY	50	56	(6)
LOUISIANA	68	0	68
MAINE	37	0	37
MARYLAND	142	53	89
MASSACHUSETTS	164	0	164
MICHIGAN	323	65	258
MINNESOTA	198	125	73
MISSISSIPPI	35	0	35
MISSOURI	171	78	93
MONTANA	260	99	161
NEBRASKA	55	16	39
NEVADA	363	294	69
NEW HAMPSHIRE	33	47	(14)
NEW JERSEY	129	156	(27)
NEW MEXICO	108	7	101
NEW YORK	297	265	32
NORTH CAROLINA	238	186	52
NORTH DAKOTA	37	50	(13)
OHIO	209	27	182
OKLAHOMA	88	0	88
OREGON	1798	1136	662
PENNSYLVANIA	181	149	32
RHODE ISLAND	26	130	(104)
SOUTH CAROLINA	70	0	70
SOUTH DAKOTA	55	78	(23)
TENNESSEE	147	0	147
TEXAS	623	0	623
UTAH	242	23	219
VERMONT	32	11	21
VIRGINIA	238	0	238
WASHINGTON	3	0	3
WEST VIRGINIA	20	39	(19)
WISCONSIN	185	0	185
WYOMING	66	158	(92)
WASH. DC	26	0	26
OUTSIDE U.S.	542	0	542
TOTAL	13,673	5,739	7,934

September 2008 Totals by Location Moved From, and By County Moved To

FROM/TO	TOTAL	GRAYS																			
		ADAMS	ASOTIN	BENTON	CHELAN	CLALLAM	CLARK	COLUMBIA	COWLITZ	DOUGLAS	FERRY	FRANKLIN	GARFIELD	GRANT	HARBOR	ISLAND	JEFFERSON	KING	KITSAP	KITTITAS	KLCKITAT
ALABAMA	64	2	0	4	1	1	1	0	1	0	0	0	1	0	0	0	14	3	1	0	
ALASKA	309	0	2	12	0	10	11	0	1	2	0	1	0	4	9	3	5	83	6	1	2
ARIZONA	582	0	0	25	6	12	44	0	6	3	0	3	2	3	6	10	1	206	25	3	1
ARKANSAS	72	0	0	1	2	1	4	0	0	1	0	1	0	0	0	1	0	31	3	0	0
CALIFORNIA	2598	8	5	44	22	46	191	1	19	6	2	12	1	12	18	34	16	1040	123	16	6
COLORADO	394	0	1	10	1	3	21	0	10	1	0	4	0	3	0	7	4	141	17	3	1
CONNECTICUT	80	0	0	1	0	0	2	0	1	0	1	0	0	0	0	2	1	52	6	0	0
DELAWARE	18	0	0	2	0	0	1	0	0	0	0	0	0	0	0	1	0	6	0	0	0
FLORIDA	565	0	2	3	2	7	25	0	10	0	0	5	0	7	2	15	2	249	32	1	0
GEORGIA	250	0	0	6	1	1	11	0	1	0	0	3	0	2	0	4	0	115	9	1	1
HAWAII	217	0	0	3	1	4	12	0	0	3	0	0	0	0	0	5	1	65	17	0	0
IDAHO	577	2	36	25	4	4	25	0	6	3	0	10	0	9	8	3	5	100	12	7	2
ILLINOIS	340	0	0	1	4	0	14	0	0	0	0	5	0	1	1	5	0	201	10	0	0
INDIANA	119	0	0	6	0	2	9	0	0	0	0	0	0	0	0	1	0	52	8	1	0
IOWA	92	0	0	2	0	1	3	0	0	0	0	0	0	0	0	1	0	39	8	0	0
KANSAS	137	0	0	3	0	1	8	0	2	0	0	0	0	0	1	2	0	53	7	2	1
KENTUCKY	50	0	0	0	0	0	2	0	0	0	0	0	0	2	1	1	1	16	1	0	0
LOUISIANA	68	0	0	4	0	0	4	0	0	0	0	0	0	0	1	0	0	27	6	0	0
MAINE	37	0	0	0	1	1	0	0	1	0	0	0	0	0	1	0	2	12	0	0	0
MARYLAND	142	0	0	0	0	1	7	0	0	0	0	1	0	0	0	0	1	72	7	0	0
MASSACHUSETTS	164	0	0	2	1	1	4	0	0	0	0	0	0	0	0	2	2	109	6	0	0
MICHIGAN	323	0	0	9	0	0	16	0	2	1	0	2	0	1	1	1	1	163	6	2	0
MINNESOTA	198	0	0	7	0	2	17	0	0	0	0	0	0	0	0	3	0	98	8	1	0
MISSISSIPPI	35	0	1	1	1	0	1	0	0	0	0	0	0	0	1	1	1	10	2	0	0
MISSOURI	171	0	0	2	2	0	9	0	1	0	1	0	0	1	0	3	4	76	5	2	0
MONTANA	260	0	4	11	4	1	14	0	3	0	0	2	0	1	1	1	2	63	9	3	1
NEBRASKA	55	1	1	2	0	0	4	0	0	0	0	0	0	0	0	0	0	22	2	0	0
NEVADA	363	0	2	13	4	4	19	0	6	1	3	5	0	7	4	4	4	124	13	1	1
NEW HAMPSHIRE	33	0	0	1	0	1	1	0	0	0	0	0	0	0	0	0	0	16	1	0	0
NEW JERSEY	129	0	0	2	1	2	3	0	0	0	0	0	0	0	0	2	0	87	7	1	0
NEW MEXICO	108	2	0	4	1	2	5	0	1	1	1	1	0	2	0	2	1	38	6	0	0
NEW YORK	297	0	0	6	1	4	7	0	0	0	0	1	0	3	0	3	0	177	11	1	0
NORTH CAROLINA	238	1	0	4	0	2	6	0	1	0	0	1	0	2	1	4	0	109	11	1	0
NORTH DAKOTA	37	0	0	1	0	2	1	0	1	0	0	0	0	0	0	0	1	17	0	0	0
OHIO	209	0	0	9	0	1	9	0	0	0	0	1	0	0	0	1	0	110	14	3	2
OKLAHOMA	88	0	0	0	2	0	9	0	0	1	0	0	0	0	0	2	0	24	8	0	0
OREGON	1798	6	6	72	9	23	531	1	54	6	2	41	1	17	10	12	11	353	53	16	29
PENNSYLVANIA	181	0	0	2	1	1	3	0	0	0	0	1	0	0	0	1	0	100	3	2	0
RHODE ISLAND	26	0	0	0	0	0	1	0	0	0	0	0	0	0	0	0	0	12	0	0	0
SOUTH CAROLINA	70	0	0	3	1	1	2	0	1	0	0	0	0	0	0	1	0	19	14	0	1
SOUTH DAKOTA	55	0	0	0	0	1	2	0	0	0	0	0	0	2	1	1	0	12	2	0	0
TENNESSEE	147	1	0	4	1	2	9	1	2	1	1	2	0	1	0	3	0	46	7	2	0
TEXAS	623	1	0	11	3	10	24	2	6	1	1	3	0	9	1	10	1	238	30	5	3
UTAH	242	0	0	6	5	5	14	0	2	4	0	14	0	7	1	3	0	69	13	0	0
VERMONT	32	0	0	0	0	0	0	0	0	0	0	0	0	0	0	0	1	14	0	0	0
VIRGINIA	238	0	0	6	3	2	3	0	2	0	0	1	0	0	1	10	0	115	16	1	3
WASHINGTON	3	0	0	0	0	0	0	0	0	0	0	0	0	0	0	0	0	2	0	0	0
WEST VIRGINIA	20	0	0	0	0	0	0	0	0	1	0	0	0	0	0	0	0	8	2	3	0
WISCONSIN	185	0	0	2	3	3	2	0	1	0	0	0	0	3	1	6	1	80	10	0	2
WYOMING	66	0	0	3	1	7	3	0	2	0	0	1	0	1	1	0	0	10	2	0	1
WASHINGTON D.C.	26	0	0	0	0	0	2	0	0	0	0	0	0	0	0	0	1	20	1	0	0
ARGENTINA	0	0	0	0	0	0	0	0	0	0	0	0	0	0	0	0	0	0	0	0	0
BELIZE (BRIT HONDU)	0	0	0	0	0	0	0	0	0	0	0	0	0	0	0	0	0	0	0	0	0
BOLIVIA	0	0	0	0	0	0	0	0	0	0	0	0	0	0	0	0	0	0	0	0	0

September 2008 Totals by Location Moved From, and By County Moved To

FROM / TO	TOTAL	GRAYS																			
		ADAMS	ASOTIN	BENTON	CHELAN	CLALLAM	CLARK	COLUMBIA	COWLITZ	DOUGLAS	FERRY	FRANKLIN	GARFIELD	GRANT	HARBOR	ISLAND	JEFFERSON	KING	KITSAP	KITTITAS	KLCKITAT
BRAZIL	8	0	0	0	0	0	0	0	1	0	0	0	0	0	0	0	0	7	0	0	0
CHILE	2	0	0	0	0	0	0	0	0	0	0	0	0	0	0	0	0	1	0	0	0
CANAL ZONE	0	0	0	0	0	0	0	0	0	0	0	0	0	0	0	0	0	0	0	0	0
COLUMBIA	4	0	0	0	0	0	0	0	0	0	0	0	0	0	0	0	0	4	0	0	0
COSTA RICA	0	0	0	0	0	0	0	0	0	0	0	0	0	0	0	0	0	0	0	0	0
EL SALVADOR	11	0	0	0	0	0	1	0	0	0	0	0	0	0	0	0	0	8	0	0	0
EQUADOR	2	0	0	0	0	0	0	0	0	0	0	0	0	0	0	0	0	2	0	0	0
GUYANA	0	0	0	0	0	0	0	0	0	0	0	0	0	0	0	0	0	0	0	0	0
NICARAGUA	0	0	0	0	0	0	0	0	0	0	0	0	0	0	0	0	0	0	0	0	0
PANAMA	1	0	0	0	0	0	0	0	0	0	0	0	0	0	0	0	0	1	0	0	0
PERU	4	0	0	0	0	0	0	0	0	0	0	0	0	0	0	0	0	3	0	0	0
PARAGUAY	0	0	0	0	0	0	0	0	0	0	0	0	0	0	0	0	0	0	0	0	0
SURINAM	0	0	0	0	0	0	0	0	0	0	0	0	0	0	0	0	0	0	0	0	0
TRINIDAD	0	0	0	0	0	0	0	0	0	0	0	0	0	0	0	0	0	0	0	0	0
UPPER VOLTA	0	0	0	0	0	0	0	0	0	0	0	0	0	0	0	0	0	0	0	0	0
URUGUAY	0	0	0	0	0	0	0	0	0	0	0	0	0	0	0	0	0	0	0	0	0
VENEZUELA	0	0	0	0	0	0	0	0	0	0	0	0	0	0	0	0	0	0	0	0	0
ALGERIA	0	0	0	0	0	0	0	0	0	0	0	0	0	0	0	0	0	0	0	0	0
ANGOLA	0	0	0	0	0	0	0	0	0	0	0	0	0	0	0	0	0	0	0	0	0
CAMERON	0	0	0	0	0	0	0	0	0	0	0	0	0	0	0	0	0	0	0	0	0
CHAD	0	0	0	0	0	0	0	0	0	0	0	0	0	0	0	0	0	0	0	0	0
CONGO	0	0	0	0	0	0	0	0	0	0	0	0	0	0	0	0	0	0	0	0	0
C. AFRICAN REP.	0	0	0	0	0	0	0	0	0	0	0	0	0	0	0	0	0	0	0	0	0
BOTSWANA	0	0	0	0	0	0	0	0	0	0	0	0	0	0	0	0	0	0	0	0	0
BURUNDI	0	0	0	0	0	0	0	0	0	0	0	0	0	0	0	0	0	0	0	0	0
DAHOMEY	0	0	0	0	0	0	0	0	0	0	0	0	0	0	0	0	0	0	0	0	0
EQ. GUINEA	0	0	0	0	0	0	0	0	0	0	0	0	0	0	0	0	0	0	0	0	0
EGYPT	0	0	0	0	0	0	0	0	0	0	0	0	0	0	0	0	0	0	0	0	0
ETHIOPIA	2	0	0	0	0	0	0	0	0	0	0	0	0	0	0	0	0	2	0	0	0
GABON	0	0	0	0	0	0	0	0	0	0	0	0	0	0	0	0	0	0	0	0	0
GAMBIA	0	0	0	0	0	0	0	0	0	0	0	0	0	0	0	0	0	0	0	0	0
GHANA	0	0	0	0	0	0	0	0	0	0	0	0	0	0	0	0	0	0	0	0	0
GUINEA	0	0	0	0	0	0	0	0	0	0	0	0	0	0	0	0	0	0	0	0	0
IVORY COAST	0	0	0	0	0	0	0	0	0	0	0	0	0	0	0	0	0	0	0	0	0
KENYA	2	0	0	0	0	0	0	0	0	0	0	0	0	0	0	0	0	0	0	0	0
LIBYA	0	0	0	0	0	0	0	0	0	0	0	0	0	0	0	0	0	0	0	0	0
LIBERIA	0	0	0	0	0	0	0	0	0	0	0	0	0	0	0	0	0	0	0	0	0
MALAWI	0	0	0	0	0	0	0	0	0	0	0	0	0	0	0	0	0	0	0	0	0
MALAGASY	0	0	0	0	0	0	0	0	0	0	0	0	0	0	0	0	0	0	0	0	0
MORROCCO	1	0	0	0	0	0	0	0	0	0	0	0	0	0	0	0	0	1	0	0	0
MAURITANIA	0	0	0	0	0	0	0	0	0	0	0	0	0	0	0	0	0	0	0	0	0
MALI	0	0	0	0	0	0	0	0	0	0	0	0	0	0	0	0	0	0	0	0	0
NIGER	0	0	0	0	0	0	0	0	0	0	0	0	0	0	0	0	0	0	0	0	0
NIGERIA	1	0	0	0	0	0	0	0	0	0	0	0	0	0	0	0	0	0	0	0	0
RHODESIA	0	0	0	0	0	0	0	0	0	0	0	0	0	0	0	0	0	0	0	0	0
RWANDA	0	0	0	0	0	0	0	0	0	0	0	0	0	0	0	0	0	0	0	0	0
SOUTH AFRICA	1	0	0	0	0	0	0	0	0	0	0	0	0	0	0	0	0	1	0	0	0
SOUTH WEST AFRICA	0	0	0	0	0	0	0	0	0	0	0	0	0	0	0	0	0	0	0	0	0
SIERRA LEONE	0	0	0	0	0	0	0	0	0	0	0	0	0	0	0	0	0	0	0	0	0
SWAZILAND	0	0	0	0	0	0	0	0	0	0	0	0	0	0	0	0	0	0	0	0	0
SENEGAL	0	0	0	0	0	0	0	0	0	0	0	0	0	0	0	0	0	0	0	0	0
SOMALI REPUBLIC	0	0	0	0	0	0	0	0	0	0	0	0	0	0	0	0	0	0	0	0	0
SUDAN	0	0	0	0	0	0	0	0	0	0	0	0	0	0	0	0	0	0	0	0	0
TOGO	0	0	0	0	0	0	0	0	0	0	0	0	0	0	0	0	0	0	0	0	0
TUNISIA	0	0	0	0	0	0	0	0	0	0	0	0	0	0	0	0	0	0	0	0	0
TANZANIA	0	0	0	0	0	0	0	0	0	0	0	0	0	0	0	0	0	0	0	0	0

September 2008 Totals by Location Moved From, and By County Moved To

FROM / TO	TOTAL	GRAYS																			
		ADAMS	ASOTIN	BENTON	CHELAN	CLALLAM	CLARK	COLUMBIA	COWLITZ	DOUGLAS	FERRY	FRANKLIN	GARFIELD	GRANT	HARBOR	ISLAND	JEFFERSON	KING	KITSAP	KITTITAS	KLCKITAT
UGANDA	1	0	0	0	0	0	0	0	0	0	0	0	0	0	0	0	0	1	0	0	0
ZAIRE	0	0	0	0	0	0	0	0	0	0	0	0	0	0	0	0	0	0	0	0	0
AFGHANISTAN	0	0	0	0	0	0	0	0	0	0	0	0	0	0	0	0	0	0	0	0	0
BANGLADESH	0	0	0	0	0	0	0	0	0	0	0	0	0	0	0	0	0	0	0	0	0
BHUTAN	0	0	0	0	0	0	0	0	0	0	0	0	0	0	0	0	0	0	0	0	0
BURMA	0	0	0	0	0	0	0	0	0	0	0	0	0	0	0	0	0	0	0	0	0
BAHRAIN	0	0	0	0	0	0	0	0	0	0	0	0	0	0	0	0	0	0	0	0	0
CEYLON (SRI LANKA)	0	0	0	0	0	0	0	0	0	0	0	0	0	0	0	0	0	0	0	0	0
CHINA	5	0	0	0	0	0	0	0	0	0	0	0	0	0	0	0	0	4	0	0	0
CAMBODIA	0	0	0	0	0	0	0	0	0	0	0	0	0	0	0	0	0	0	0	0	0
CYPRUS	0	0	0	0	0	0	0	0	0	0	0	0	0	0	0	0	0	0	0	0	0
JORDAN	0	0	0	0	0	0	0	0	0	0	0	0	0	0	0	0	0	0	0	0	0
JAPAN	14	0	0	0	0	0	0	0	1	0	0	0	0	0	0	2	0	11	0	0	0
KUWAIT	0	0	0	0	0	0	0	0	0	0	0	0	0	0	0	0	0	0	0	0	0
IRAN	2	0	0	0	0	0	0	0	0	0	0	0	0	0	0	0	0	0	0	0	0
ISRAEL	0	0	0	0	0	0	0	0	0	0	0	0	0	0	0	0	0	0	0	0	0
INDIA	24	0	0	0	0	0	0	0	0	0	0	0	0	0	0	0	0	23	0	0	0
IRAQ	0	0	0	0	0	0	0	0	0	0	0	0	0	0	0	0	0	0	0	0	0
INDONESIA	0	0	0	0	0	0	0	0	0	0	0	0	0	0	0	0	0	0	0	0	0
KOREA	10	0	0	0	0	0	0	0	0	0	0	0	0	0	0	0	0	7	0	0	0
LAOS	1	0	0	0	0	0	0	0	0	0	0	0	0	0	0	0	0	0	0	0	0
LEBANON	0	0	0	0	0	0	0	0	0	0	0	0	0	0	0	0	0	0	0	0	0
MALAYSIA	1	0	0	0	0	0	0	0	0	0	0	0	0	0	0	0	0	1	0	0	0
MONGOLIA	0	0	0	0	0	0	0	0	0	0	0	0	0	0	0	0	0	0	0	0	0
NEPAL	1	0	0	0	0	0	0	0	0	0	0	0	0	0	0	0	0	0	0	0	0
OMAN	0	0	0	0	0	0	0	0	0	0	0	0	0	0	0	0	0	0	0	0	0
PAKISTAN	1	0	0	0	0	0	0	0	0	0	0	0	0	0	0	0	0	1	0	0	0
QATAR	0	0	0	0	0	0	0	0	0	0	0	0	0	0	0	0	0	0	0	0	0
SIKKIM	0	0	0	0	0	0	0	0	0	0	0	0	0	0	0	0	0	0	0	0	0
SYRIA	0	0	0	0	0	0	0	0	0	0	0	0	0	0	0	0	0	0	0	0	0
SAUDI ARABIA	1	0	0	0	0	0	0	0	0	0	0	0	0	0	0	0	0	0	0	0	0
SINGAPORE	1	0	0	0	0	0	0	0	0	0	0	0	0	0	0	0	0	1	0	0	0
TAIWAN	3	0	0	0	0	0	0	0	0	0	0	0	0	0	0	0	0	3	0	0	0
THAILAND	1	0	0	0	0	0	0	0	0	0	0	0	0	0	0	0	0	1	0	0	0
TURKEY	1	0	0	0	0	0	0	0	0	0	0	0	0	0	0	0	0	1	0	0	0
USSR	3	0	0	0	0	0	0	0	0	0	0	0	0	0	0	0	0	2	0	0	0
UNITED ARAB EMIRATE	0	0	0	0	0	0	0	0	0	0	0	0	0	0	0	0	0	0	0	0	0
VIETNAM	0	0	0	0	0	0	0	0	0	0	0	0	0	0	0	0	0	0	0	0	0
YEMEN	0	0	0	0	0	0	0	0	0	0	0	0	0	0	0	0	0	0	0	0	0
AUSTRIA	1	0	0	0	0	0	0	0	0	0	0	0	0	0	0	0	0	1	0	0	0
BULGARIA	0	0	0	0	0	0	0	0	0	0	0	0	0	0	0	0	0	0	0	0	0
BELGIUM	0	0	0	0	0	0	0	0	0	0	0	0	0	0	0	0	0	0	0	0	0
DENMARK	2	0	0	0	0	0	0	0	0	0	0	0	0	0	0	0	0	2	0	0	0
ENGLAND	9	0	0	0	0	0	0	0	0	0	0	0	0	0	0	0	0	8	0	0	0
FRANCE	8	0	0	0	0	0	0	0	0	0	0	0	0	0	0	1	0	7	0	0	0
FINLAND	0	0	0	0	0	0	0	0	0	0	0	0	0	0	0	0	0	0	0	0	0
CZECHOSLAVAKIA	0	0	0	0	0	0	0	0	0	0	0	0	0	0	0	0	0	0	0	0	0
GREECE	2	0	0	0	0	0	0	0	0	0	0	0	0	0	0	0	0	0	0	0	0
GERMANY	37	0	0	0	0	0	0	0	0	0	0	0	0	0	0	0	0	25	3	0	0
IRELAND	5	0	0	0	0	0	0	0	0	0	0	0	0	0	0	0	0	4	0	0	0
ITALY	2	0	0	0	0	0	0	0	0	0	0	0	0	0	0	0	0	2	0	0	0
HUNGARY	0	0	0	0	0	0	0	0	0	0	0	0	0	0	0	0	0	0	0	0	0
LUXEMBOURG	0	0	0	0	0	0	0	0	0	0	0	0	0	0	0	0	0	0	0	0	0
NETHERLANDS	4	0	0	0	0	0	0	0	0	0	0	0	0	0	0	0	0	4	0	0	0
NORWAY	1	0	0	0	0	0	0	0	0	0	0	0	0	0	0	0	0	1	0	0	0
POLAND	1	0	0	0	0	0	0	0	0	0	0	0	0	0	0	0	0	1	0	0	0

September 2008 Totals by Location Moved From, and By County Moved To

FROM / TO	TOTAL	GRAYS																			
		ADAMS	ASOTIN	BENTON	CHELAN	CLALLAM	CLARK	COLUMBIA	COWLITZ	DOUGLAS	FERRY	FRANKLIN	GARFIELD	GRANT	HARBOR	ISLAND	JEFFERSON	KING	KITSAP	KITTITAS	KLCKITAT
SPAIN	3	0	0	0	0	0	0	0	0	0	0	0	0	0	0	0	0	2	0	0	0
SWITZERLAND	0	0	0	0	0	0	0	0	0	0	0	0	0	0	0	0	0	0	0	0	0
SWEDEN	1	0	0	0	0	0	0	0	0	0	0	0	0	0	0	0	0	1	0	0	0
ROMANIA	0	0	0	0	0	0	0	0	0	0	0	0	0	0	0	0	0	0	0	0	0
YUGOSLAVIA	0	0	0	0	0	0	0	0	0	0	0	0	0	0	0	0	0	0	0	0	0
ALBANIA	0	0	0	0	0	0	0	0	0	0	0	0	0	0	0	0	0	0	0	0	0
ANDORRA	0	0	0	0	0	0	0	0	0	0	0	0	0	0	0	0	0	0	0	0	0
AMERICAN SAMOA	13	0	0	0	0	0	0	0	0	0	0	0	0	0	0	0	0	6	0	0	0
BORNEO	0	0	0	0	0	0	0	0	0	0	0	0	0	0	0	0	0	0	0	0	0
CUBA	0	0	0	0	0	0	0	0	0	0	0	0	0	0	0	0	0	0	0	0	0
BERMUDA	0	0	0	0	0	0	0	0	0	0	0	0	0	0	0	0	0	0	0	0	0
DOMINICAN REPUBLIC	0	0	0	0	0	0	0	0	0	0	0	0	0	0	0	0	0	0	0	0	0
FIJI	2	0	0	0	0	0	0	0	0	0	0	0	0	0	0	0	0	2	0	0	0
GUAM	41	0	0	0	0	0	2	0	0	0	0	1	0	0	0	1	0	15	5	0	0
HAITI	0	0	0	0	0	0	0	0	0	0	0	0	0	0	0	0	0	0	0	0	0
JAMAICA	1	0	0	0	0	0	0	0	0	0	0	0	0	0	0	0	0	0	0	0	0
NEW ZEALAND	5	0	0	0	0	0	0	0	0	0	0	0	0	0	0	0	0	5	0	0	0
PORTUGAL	0	0	0	0	0	0	0	0	0	0	0	0	0	0	0	0	0	0	0	0	0
PHILIPPINES	5	0	0	0	0	0	0	0	0	0	0	0	0	0	0	0	0	3	0	0	0
PUERTO RICO	21	0	1	1	0	0	0	0	0	0	0	0	0	0	0	0	0	8	0	0	0
TAHITI	0	0	0	0	0	0	0	0	0	0	0	0	0	0	0	0	0	0	0	0	0
TONGA	0	0	0	0	0	0	0	0	0	0	0	0	0	0	0	0	0	0	0	0	0
VIRGIN ISLANDS	1	0	0	0	0	0	0	0	0	0	0	0	0	0	0	0	0	0	1	0	0
WEST SAMOA	0	0	0	0	0	0	0	0	0	0	0	0	0	0	0	0	0	0	0	0	0
AUSTRALIA	5	0	0	0	0	0	0	0	0	0	0	0	0	0	0	0	0	5	0	0	0
ANTARTICA	0	0	0	0	0	0	0	0	0	0	0	0	0	0	0	0	0	0	0	0	0
ICELAND	0	0	0	0	0	0	0	0	0	0	0	0	0	0	0	0	0	0	0	0	0
GREENLAND	0	0	0	0	0	0	0	0	0	0	0	0	0	0	0	0	0	0	0	0	0
MEXICO	100	0	0	4	5	0	6	2	1	1	0	2	0	0	0	0	0	36	1	0	0
ALBERTA	5	0	0	0	0	1	0	0	0	0	0	0	0	0	0	0	0	2	0	0	0
BRITISH COLUMBIA	54	0	0	0	1	1	2	0	0	0	0	0	0	0	0	0	0	31	2	0	0
MANITOBA	0	0	0	0	0	0	0	0	0	0	0	0	0	0	0	0	0	0	0	0	0
NEW BRUNSWICK	0	0	0	0	0	0	0	0	0	0	0	0	0	0	0	0	0	0	0	0	0
NEWFOUNDLAND	1	0	0	0	0	0	0	0	0	0	0	0	0	0	0	0	0	0	0	0	1
NOVA SCOTIA	0	0	0	0	0	0	0	0	0	0	0	0	0	0	0	0	0	0	0	0	0
ONTARIO	35	0	0	1	0	0	0	0	0	0	0	0	0	0	0	1	0	29	1	0	0
PRINCE EDWARD IS.	0	0	0	0	0	0	0	0	0	0	0	0	0	0	0	0	0	0	0	0	0
QUEBEC	5	0	0	1	0	0	0	0	0	0	0	0	0	0	0	0	0	4	0	0	0
SASKATCHEWAN	2	0	0	0	0	0	0	0	0	0	0	0	0	0	0	0	0	1	0	0	0
NORTHWEST TERRITORY	0	0	0	0	0	0	0	0	0	0	0	0	0	0	0	0	0	0	0	0	0
YUKON TERRITORY	1	0	0	0	0	0	0	0	0	0	0	0	0	0	0	0	0	0	0	0	0
UNKNOWN	60	0	0	2	0	0	2	0	1	0	0	0	0	0	0	1	0	26	3	0	0
** TOTAL **	13673	24	61	344	95	174	1129	7	147	37	12	124	4	101	72	177	70	5232	578	80	58

September 2008 Totals by Location Moved From, and By County Moved To

FROM / TO	PEND																SAN				WALLA				
	LEWIS	LINCOLN	MASON	OKANAGON	PACIFIC	OREILLE	PIERCE	JUAN	SKAGIT	SKAMANIA	SNOHOMISH	SPOKANE	STEVENS	THURSTON	WAHIAKUM	WALLA	WHATCOM	WHITMAN	YAKIMA	UNKNOWN					
ALABAMA	2	0	0	1	1	0	11	0	0	0	6	3	1	8	0	0	2	0	0	0					
ALASKA	6	1	1	4	1	3	30	1	5	0	16	30	8	16	0	4	23	4	4	0					
ARIZONA	8	0	3	1	2	3	57	0	3	1	59	33	2	19	0	7	11	2	14	1					
ARKANSAS	2	0	0	0	0	0	5	0	2	0	4	2	1	2	0	1	1	1	6	0					
CALIFORNIA	36	2	15	6	3	3	238	12	25	1	194	129	19	100	3	26	103	20	41	0					
COLORADO	0	0	0	1	0	0	34	0	9	0	36	22	2	20	0	9	23	8	3	0					
CONNECTICUT	0	0	0	0	0	0	4	0	2	0	5	1	0	2	0	0	0	0	0	0					
DELAWARE	0	0	0	0	0	0	2	0	0	0	3	0	0	1	0	0	2	0	0	0					
FLORIDA	4	0	4	2	0	0	55	2	11	1	36	23	3	27	0	3	20	6	6	0					
GEORGIA	3	1	0	1	0	0	37	2	3	0	12	15	0	10	0	1	4	1	5	0					
HAWAII	1	0	2	0	0	0	42	1	3	0	21	11	1	11	0	1	10	2	0	0					
IDAHO	3	1	5	8	4	10	31	2	6	1	26	129	10	14	0	14	18	29	5	0					
ILLINOIS	3	0	1	0	2	0	26	0	3	1	28	15	2	6	0	0	6	3	2	0					
INDIANA	0	0	0	0	0	0	13	1	1	0	7	7	0	3	0	0	6	2	0	0					
IOWA	0	0	0	0	0	0	13	0	1	0	5	6	1	6	0	0	4	1	1	0					
KANSAS	2	0	1	0	0	0	13	0	3	0	18	8	0	7	0	1	2	2	0	0					
KENTUCKY	1	0	1	0	0	0	7	1	1	0	6	1	1	3	0	0	3	0	1	0					
LOUISIANA	0	0	1	0	0	0	12	0	3	0	2	2	0	4	0	0	1	1	0	0					
MAINE	0	0	0	0	0	0	8	3	0	0	2	0	0	2	0	0	3	0	1	0					
MARYLAND	2	0	0	0	0	0	8	0	1	0	12	6	0	7	0	2	6	6	3	0					
MASSACHUSETTS	0	0	0	0	2	0	19	0	0	0	5	3	0	3	0	0	4	0	1	0					
MICHIGAN	1	0	0	8	0	0	27	0	6	0	34	14	1	4	0	3	10	6	4	0					
MINNESOTA	0	2	2	0	0	0	17	0	4	1	12	5	0	8	0	2	8	1	0	0					
MISSISSIPPI	1	0	0	0	0	0	3	0	1	0	1	6	0	2	0	0	0	2	0	0					
MISSOURI	1	0	0	1	0	1	24	0	3	0	9	5	0	11	0	0	9	1	0	0					
MONTANA	3	3	0	2	1	1	21	0	2	1	15	59	4	8	0	1	10	2	7	0					
NEBRASKA	0	0	0	0	0	0	3	0	0	0	7	7	0	5	0	0	1	0	0	0					
NEVADA	6	0	4	1	0	0	36	0	6	0	22	22	8	20	0	2	11	3	7	0					
NEW HAMPSHIRE	0	0	0	0	0	0	4	2	0	1	0	0	1	2	0	0	2	0	1	0					
NEW JERSEY	0	0	1	0	0	1	6	0	3	0	1	4	0	2	0	0	5	0	1	0					
NEW MEXICO	0	0	0	1	0	0	7	0	0	0	11	10	1	2	0	3	2	3	1	0					
NEW YORK	0	0	0	1	0	0	17	1	4	1	24	7	0	18	0	0	6	4	0	0					
NORTH CAROLINA	2	0	1	0	1	1	33	0	6	0	14	7	1	13	0	3	7	1	5	0					
NORTH DAKOTA	0	0	0	0	0	0	4	0	0	0	3	2	0	2	0	0	1	2	0	0					
OHIO	1	1	0	0	0	0	18	1	3	0	14	6	2	5	0	2	5	0	1	0					
OKLAHOMA	0	1	1	2	0	0	15	0	2	0	10	6	2	2	0	0	0	0	1	0					
OREGON	32	0	4	14	22	1	92	5	22	11	79	87	9	63	3	32	22	10	36	1					
PENNSYLVANIA	1	0	0	1	0	0	19	0	2	0	19	10	0	8	0	1	2	3	1	0					
RHODE ISLAND	0	0	0	0	0	0	10	0	0	0	1	0	0	2	0	0	0	0	0	0					
SOUTH CAROLINA	0	0	3	0	0	0	5	0	0	0	6	5	0	3	0	0	2	0	3	0					
SOUTH DAKOTA	0	2	0	0	0	0	5	0	0	0	2	11	1	4	0	0	2	3	4	0					
TENNESSEE	1	0	0	0	0	0	21	0	7	1	9	5	1	8	0	0	5	2	4	0					
TEXAS	2	1	1	1	2	1	78	0	12	0	57	20	1	33	0	2	33	10	9	1					
UTAH	0	0	1	1	1	0	23	1	5	0	18	18	2	6	0	3	8	3	9	0					
VERMONT	0	0	2	0	0	0	5	0	0	0	0	2	0	5	0	0	2	1	0	0					
VIRGINIA	0	0	0	0	0	0	22	1	1	0	19	13	1	10	0	0	4	1	2	1					
WASHINGTON	0	0	0	0	0	0	0	0	0	0	0	1	0	0	0	0	0	0	0	0					
WEST VIRGINIA	0	0	0	0	0	0	4	0	0	0	1	0	0	0	0	0	0	1	0	0					
WISCONSIN	3	0	0	0	0	1	17	0	1	0	18	7	1	7	0	0	8	5	3	0					
WYOMING	1	1	0	1	0	0	2	0	4	0	7	9	0	3	0	0	1	2	3	0					
WASHINGTON D.C.	0	0	0	0	0	0	1	0	0	0	1	0	0	0	0	0	0	0	0	0					
ARGENTINA	0	0	0	0	0	0	0	0	0	0	0	0	0	0	0	0	0	0	0	0					
BELIZE (BRIT HONDU)	0	0	0	0	0	0	0	0	0	0	0	0	0	0	0	0	0	0	0	0					
BOLIVIA	0	0	0	0	0	0	0	0	0	0	0	0	0	0	0	0	0	0	0	0					

September 2008 Totals by Location Moved From, and By County Moved To

FROM / TO	LEWIS	LINCOLN	MASON	OKANAGON	PACIFIC	PEND OREILLE	PIERCE	SAN JUAN	SKAGIT	SKAMANIA	SNOHOMISH	SPOKANE	STEVENS	THURSTON	WAHKIAKUM	WALLA WALLA	WHATCOM	WHITMAN	YAKIMA	UNKNOWN
BRAZIL	0	0	0	0	0	0	0	0	0	0	0	0	0	0	0	0	0	0	0	0
CHILE	0	0	0	0	0	0	0	0	0	0	0	0	0	0	0	0	0	1	0	0
CANAL ZONE	0	0	0	0	0	0	0	0	0	0	0	0	0	0	0	0	0	0	0	0
COLUMBIA	0	0	0	0	0	0	0	0	0	0	0	0	0	0	0	0	0	0	0	0
COSTA RICA	0	0	0	0	0	0	0	0	0	0	0	0	0	0	0	0	0	0	0	0
EL SALVADOR	0	0	0	0	0	0	0	0	0	0	1	0	0	0	0	1	0	0	0	0
EQUADOR	0	0	0	0	0	0	0	0	0	0	0	0	0	0	0	0	0	0	0	0
GUYANA	0	0	0	0	0	0	0	0	0	0	0	0	0	0	0	0	0	0	0	0
NICARAGUA	0	0	0	0	0	0	0	0	0	0	0	0	0	0	0	0	0	0	0	0
PANAMA	0	0	0	0	0	0	0	0	0	0	0	0	0	0	0	0	0	0	0	0
PERU	0	0	0	0	0	0	0	0	0	0	0	0	0	0	1	0	0	0	0	0
PARAGUAY	0	0	0	0	0	0	0	0	0	0	0	0	0	0	0	0	0	0	0	0
SURINAM	0	0	0	0	0	0	0	0	0	0	0	0	0	0	0	0	0	0	0	0
TRINIDAD	0	0	0	0	0	0	0	0	0	0	0	0	0	0	0	0	0	0	0	0
UPPER VOLTA	0	0	0	0	0	0	0	0	0	0	0	0	0	0	0	0	0	0	0	0
URUGUAY	0	0	0	0	0	0	0	0	0	0	0	0	0	0	0	0	0	0	0	0
VENEZUELA	0	0	0	0	0	0	0	0	0	0	0	0	0	0	0	0	0	0	0	0
ALGERIA	0	0	0	0	0	0	0	0	0	0	0	0	0	0	0	0	0	0	0	0
ANGOLA	0	0	0	0	0	0	0	0	0	0	0	0	0	0	0	0	0	0	0	0
CAMERON	0	0	0	0	0	0	0	0	0	0	0	0	0	0	0	0	0	0	0	0
CHAD	0	0	0	0	0	0	0	0	0	0	0	0	0	0	0	0	0	0	0	0
CONGO	0	0	0	0	0	0	0	0	0	0	0	0	0	0	0	0	0	0	0	0
C. AFRICAN REP.	0	0	0	0	0	0	0	0	0	0	0	0	0	0	0	0	0	0	0	0
BOTSWANA	0	0	0	0	0	0	0	0	0	0	0	0	0	0	0	0	0	0	0	0
BURUNDI	0	0	0	0	0	0	0	0	0	0	0	0	0	0	0	0	0	0	0	0
DAHOMEY	0	0	0	0	0	0	0	0	0	0	0	0	0	0	0	0	0	0	0	0
EQ. GUINEA	0	0	0	0	0	0	0	0	0	0	0	0	0	0	0	0	0	0	0	0
EGYPT	0	0	0	0	0	0	0	0	0	0	0	0	0	0	0	0	0	0	0	0
ETHIOPIA	0	0	0	0	0	0	0	0	0	0	0	0	0	0	0	0	0	0	0	0
GABON	0	0	0	0	0	0	0	0	0	0	0	0	0	0	0	0	0	0	0	0
GAMBIA	0	0	0	0	0	0	0	0	0	0	0	0	0	0	0	0	0	0	0	0
GHANA	0	0	0	0	0	0	0	0	0	0	0	0	0	0	0	0	0	0	0	0
GUINEA	0	0	0	0	0	0	0	0	0	0	0	0	0	0	0	0	0	0	0	0
IVORY COAST	0	0	0	0	0	0	0	0	0	0	0	0	0	0	0	0	0	0	0	0
KENYA	0	0	0	0	0	0	2	0	0	0	0	0	0	0	0	0	0	0	0	0
LIBYA	0	0	0	0	0	0	0	0	0	0	0	0	0	0	0	0	0	0	0	0
LIBERIA	0	0	0	0	0	0	0	0	0	0	0	0	0	0	0	0	0	0	0	0
MALAWI	0	0	0	0	0	0	0	0	0	0	0	0	0	0	0	0	0	0	0	0
MALAGASY	0	0	0	0	0	0	0	0	0	0	0	0	0	0	0	0	0	0	0	0
MORROCCO	0	0	0	0	0	0	0	0	0	0	0	0	0	0	0	0	0	0	0	0
MAURITANIA	0	0	0	0	0	0	0	0	0	0	0	0	0	0	0	0	0	0	0	0
MALI	0	0	0	0	0	0	0	0	0	0	0	0	0	0	0	0	0	0	0	0
NIGER	0	0	0	0	0	0	0	0	0	0	0	0	0	0	0	0	0	0	0	0
NIGERIA	0	0	0	0	0	0	0	0	0	0	0	0	0	1	0	0	0	0	0	0
RHODESIA	0	0	0	0	0	0	0	0	0	0	0	0	0	0	0	0	0	0	0	0
RWANDA	0	0	0	0	0	0	0	0	0	0	0	0	0	0	0	0	0	0	0	0
SOUTH AFRICA	0	0	0	0	0	0	0	0	0	0	0	0	0	0	0	0	0	0	0	0
SOUTH WEST AFRICA	0	0	0	0	0	0	0	0	0	0	0	0	0	0	0	0	0	0	0	0
SIERRA LEONE	0	0	0	0	0	0	0	0	0	0	0	0	0	0	0	0	0	0	0	0
SWAZILAND	0	0	0	0	0	0	0	0	0	0	0	0	0	0	0	0	0	0	0	0
SENEGAL	0	0	0	0	0	0	0	0	0	0	0	0	0	0	0	0	0	0	0	0
SOMALI REPUBLIC	0	0	0	0	0	0	0	0	0	0	0	0	0	0	0	0	0	0	0	0
SUDAN	0	0	0	0	0	0	0	0	0	0	0	0	0	0	0	0	0	0	0	0
TOGO	0	0	0	0	0	0	0	0	0	0	0	0	0	0	0	0	0	0	0	0
TUNISIA	0	0	0	0	0	0	0	0	0	0	0	0	0	0	0	0	0	0	0	0
TANZANIA	0	0	0	0	0	0	0	0	0	0	0	0	0	0	0	0	0	0	0	0

September 2008 Totals by Location Moved From, and By County Moved To

FROM / TO	LEWIS	LINCOLN	MASON	OKANAGON	PACIFIC	PEND OREILLE	PIERCE	SAN JUAN	SKAGIT	SKAMANIA	SNOHOMISH	SPOKANE	STEVENS	THURSTON	WAHKIAKUM	WALLA WALLA	WHATCOM	WHITMAN	YAKIMA	UNKNOWN
UGANDA	0	0	0	0	0	0	0	0	0	0	0	0	0	0	0	0	0	0	0	0
ZAIRE	0	0	0	0	0	0	0	0	0	0	0	0	0	0	0	0	0	0	0	0
AFGHANISTAN	0	0	0	0	0	0	0	0	0	0	0	0	0	0	0	0	0	0	0	0
BANGLADESH	0	0	0	0	0	0	0	0	0	0	0	0	0	0	0	0	0	0	0	0
BHUTAN	0	0	0	0	0	0	0	0	0	0	0	0	0	0	0	0	0	0	0	0
BURMA	0	0	0	0	0	0	0	0	0	0	0	0	0	0	0	0	0	0	0	0
BAHRAIN	0	0	0	0	0	0	0	0	0	0	0	0	0	0	0	0	0	0	0	0
CEYLON (SRI LANKA)	0	0	0	0	0	0	0	0	0	0	0	0	0	0	0	0	0	0	0	0
CHINA	0	0	0	0	0	0	1	0	0	0	0	0	0	0	0	0	0	0	0	0
CAMBODIA	0	0	0	0	0	0	0	0	0	0	0	0	0	0	0	0	0	0	0	0
CYPRUS	0	0	0	0	0	0	0	0	0	0	0	0	0	0	0	0	0	0	0	0
JORDAN	0	0	0	0	0	0	0	0	0	0	0	0	0	0	0	0	0	0	0	0
JAPAN	0	0	0	0	0	0	0	0	0	0	0	0	0	0	0	0	0	0	0	0
KUWAIT	0	0	0	0	0	0	0	0	0	0	0	0	0	0	0	0	0	0	0	0
IRAN	0	0	0	0	0	0	2	0	0	0	0	0	0	0	0	0	0	0	0	0
ISRAEL	0	0	0	0	0	0	0	0	0	0	0	0	0	0	0	0	0	0	0	0
INDIA	0	0	0	0	0	0	0	0	0	0	0	0	0	0	0	0	0	0	1	0
IRAQ	0	0	0	0	0	0	0	0	0	0	0	0	0	0	0	0	0	0	0	0
INDONESIA	0	0	0	0	0	0	0	0	0	0	0	0	0	0	0	0	0	0	0	0
KOREA	0	0	0	0	0	0	0	0	0	0	2	0	0	0	0	0	0	1	0	0
LAOS	0	0	0	0	0	0	0	0	0	0	0	0	0	0	0	0	0	1	0	0
LEBANON	0	0	0	0	0	0	0	0	0	0	0	0	0	0	0	0	0	0	0	0
MALAYSIA	0	0	0	0	0	0	0	0	0	0	0	0	0	0	0	0	0	0	0	0
MONGOLIA	0	0	0	0	0	0	0	0	0	0	0	0	0	0	0	0	0	0	0	0
NEPAL	0	0	0	0	0	0	0	0	0	0	0	0	0	0	0	0	0	1	0	0
OMAN	0	0	0	0	0	0	0	0	0	0	0	0	0	0	0	0	0	0	0	0
PAKISTAN	0	0	0	0	0	0	0	0	0	0	0	0	0	0	0	0	0	0	0	0
QATAR	0	0	0	0	0	0	0	0	0	0	0	0	0	0	0	0	0	0	0	0
SIKKIM	0	0	0	0	0	0	0	0	0	0	0	0	0	0	0	0	0	0	0	0
SYRIA	0	0	0	0	0	0	0	0	0	0	0	0	0	0	0	0	0	0	0	0
SAUDI ARABIA	0	0	0	0	0	0	0	0	0	0	0	0	0	0	0	0	0	1	0	0
SINGAPORE	0	0	0	0	0	0	0	0	0	0	0	0	0	0	0	0	0	0	0	0
TAIWAN	0	0	0	0	0	0	0	0	0	0	0	0	0	0	0	0	0	0	0	0
THAILAND	0	0	0	0	0	0	0	0	0	0	0	0	0	0	0	0	0	0	0	0
TURKEY	0	0	0	0	0	0	0	0	0	0	0	0	0	0	0	0	0	0	0	0
USSR	0	0	0	0	0	0	1	0	0	0	0	0	0	0	0	0	0	0	0	0
UNITED ARAB EMIRATE	0	0	0	0	0	0	0	0	0	0	0	0	0	0	0	0	0	0	0	0
VIETNAM	0	0	0	0	0	0	0	0	0	0	0	0	0	0	0	0	0	0	0	0
YEMEN	0	0	0	0	0	0	0	0	0	0	0	0	0	0	0	0	0	0	0	0
AUSTRIA	0	0	0	0	0	0	0	0	0	0	0	0	0	0	0	0	0	0	0	0
BULGARIA	0	0	0	0	0	0	0	0	0	0	0	0	0	0	0	0	0	0	0	0
BELGIUM	0	0	0	0	0	0	0	0	0	0	0	0	0	0	0	0	0	0	0	0
DENMARK	0	0	0	0	0	0	0	0	0	0	0	0	0	0	0	0	0	0	0	0
ENGLAND	0	0	0	0	0	0	0	0	0	0	0	0	0	1	0	0	0	0	0	0
FRANCE	0	0	0	0	0	0	0	0	0	0	0	0	0	0	0	0	0	0	0	0
FINLAND	0	0	0	0	0	0	0	0	0	0	0	0	0	0	0	0	0	0	0	0
CZECHOSLAVAKIA	0	0	0	0	0	0	0	0	0	0	0	0	0	0	0	0	0	0	0	0
GREECE	0	0	0	0	0	0	1	0	0	0	0	0	0	1	0	0	0	0	0	0
GERMANY	0	0	0	0	0	0	4	0	0	0	4	0	0	1	0	0	0	0	0	0
IRELAND	0	0	0	0	0	0	0	0	0	0	0	0	0	1	0	0	0	0	0	0
ITALY	0	0	0	0	0	0	0	0	0	0	0	0	0	0	0	0	0	0	0	0
HUNGARY	0	0	0	0	0	0	0	0	0	0	0	0	0	0	0	0	0	0	0	0
LUXEMBOURG	0	0	0	0	0	0	0	0	0	0	0	0	0	0	0	0	0	0	0	0
NETHERLANDS	0	0	0	0	0	0	0	0	0	0	0	0	0	0	0	0	0	0	0	0
NORWAY	0	0	0	0	0	0	0	0	0	0	0	0	0	0	0	0	0	0	0	0
POLAND	0	0	0	0	0	0	0	0	0	0	0	0	0	0	0	0	0	0	0	0

September 2008 Totals by Location Moved From, and By County Moved To

FROM / TO	LEWIS	LINCOLN	MASON	OKANAGON	PACIFIC	PEND OREILLE	PIERCE	SAN JUAN	SKAGIT	SKAMANIA	SNOHOMISH	SPOKANE	STEVENS	THURSTON	WAHKIAKUM	WALLA WALLA	WHATCOM	WHITMAN	YAKIMA	UNKNOWN
SPAIN	0	0	0	0	0	0	0	0	0	0	0	0	0	0	0	0	0	1	0	0
SWITZERLAND	0	0	0	0	0	0	0	0	0	0	0	0	0	0	0	0	0	0	0	0
SWEDEN	0	0	0	0	0	0	0	0	0	0	0	0	0	0	0	0	0	0	0	0
ROMANIA	0	0	0	0	0	0	0	0	0	0	0	0	0	0	0	0	0	0	0	0
YUGOSLAVIA	0	0	0	0	0	0	0	0	0	0	0	0	0	0	0	0	0	0	0	0
ALBANIA	0	0	0	0	0	0	0	0	0	0	0	0	0	0	0	0	0	0	0	0
ANDORRA	0	0	0	0	0	0	0	0	0	0	0	0	0	0	0	0	0	0	0	0
AMERICAN SAMOA	0	0	0	0	0	0	3	0	0	0	0	0	0	4	0	0	0	0	0	0
BORNEO	0	0	0	0	0	0	0	0	0	0	0	0	0	0	0	0	0	0	0	0
CUBA	0	0	0	0	0	0	0	0	0	0	0	0	0	0	0	0	0	0	0	0
BERMUDA	0	0	0	0	0	0	0	0	0	0	0	0	0	0	0	0	0	0	0	0
DOMINICAN REPUBLIC	0	0	0	0	0	0	0	0	0	0	0	0	0	0	0	0	0	0	0	0
FIJI	0	0	0	0	0	0	0	0	0	0	0	0	0	0	0	0	0	0	0	0
GUAM	0	0	0	0	0	0	12	0	1	0	1	1	0	1	0	1	0	0	0	0
HAITI	0	0	0	0	0	0	0	0	0	0	0	0	0	0	0	0	0	0	0	0
JAMAICA	0	0	0	0	0	0	0	1	0	0	0	0	0	0	0	0	0	0	0	0
NEW ZEALAND	0	0	0	0	0	0	0	0	0	0	0	0	0	0	0	0	0	0	0	0
PORTUGAL	0	0	0	0	0	0	0	0	0	0	0	0	0	0	0	0	0	0	0	0
PHILIPPINES	0	0	0	0	0	0	1	0	0	0	1	0	0	0	0	0	0	0	0	0
PUERTO RICO	0	0	0	0	0	0	3	0	0	0	6	0	0	1	0	0	0	0	1	0
TAHITI	0	0	0	0	0	0	0	0	0	0	0	0	0	0	0	0	0	0	0	0
TONGA	0	0	0	0	0	0	0	0	0	0	0	0	0	0	0	0	0	0	0	0
VIRGIN ISLANDS	0	0	0	0	0	0	0	0	0	0	0	0	0	0	0	0	0	0	0	0
WEST SAMOA	0	0	0	0	0	0	0	0	0	0	0	0	0	0	0	0	0	0	0	0
AUSTRALIA	0	0	0	0	0	0	0	0	0	0	0	0	0	0	0	0	0	0	0	0
ANTARTICA	0	0	0	0	0	0	0	0	0	0	0	0	0	0	0	0	0	0	0	0
ICELAND	0	0	0	0	0	0	0	0	0	0	0	0	0	0	0	0	0	0	0	0
GREENLAND	0	0	0	0	0	0	0	0	0	0	0	0	0	0	0	0	0	0	0	0
MEXICO	0	0	3	3	1	0	7	0	0	0	12	1	0	1	0	3	0	1	10	0
ALBERTA	0	0	0	0	0	0	1	0	1	0	0	0	0	0	0	0	0	0	0	0
BRITISH COLUMBIA	0	0	0	0	0	0	1	0	1	0	2	0	0	2	0	0	10	0	1	0
MANITOBA	0	0	0	0	0	0	0	0	0	0	0	0	0	0	0	0	0	0	0	0
NEW BRUNSWICK	0	0	0	0	0	0	0	0	0	0	0	0	0	0	0	0	0	0	0	0
NEWFOUNDLAND	0	0	0	0	0	0	0	0	0	0	0	0	0	0	0	0	0	0	0	0
NOVA SCOTIA	0	0	0	0	0	0	0	0	0	0	0	0	0	0	0	0	0	0	0	0
ONTARIO	0	0	0	0	0	0	1	0	0	0	0	0	0	1	0	0	0	1	0	0
PRINCE EDWARD IS.	0	0	0	0	0	0	0	0	0	0	0	0	0	0	0	0	0	0	0	0
QUEBEC	0	0	0	0	0	0	0	0	0	0	0	0	0	0	0	0	0	0	0	0
SASKATCHEWAN	0	0	0	0	0	0	0	0	0	0	0	1	0	0	0	0	0	0	0	0
NORTHWEST TERRITORY	0	0	0	0	0	0	0	0	0	0	0	0	0	0	0	0	0	0	0	0
YUKON TERRITORY	0	0	0	0	0	0	0	0	0	0	1	0	0	0	0	0	0	0	0	0
UNKNOWN	0	1	0	1	0	0	7	0	0	0	8	5	0	0	0	0	1	1	1	0
** TOTAL **	128	17	57	62	43	26	1251	37	179	21	955	802	87	542	6	129	429	163	209	4