



STATE OF WASHINGTON  
DEPARTMENT OF LICENSING  
PO Box 9035 • Olympia, Washington 98507-9035

October 9, 2009

**Washington State Drivers Report for September 2009**

The monthly report for September 2009 tabulates Washington drivers' license (WDL) activity. The table below summarizes WDL migration in and out of Washington State. It also identifies the top three in-migration states. The returned WDL depicted below is a reflection of the notifications of surrendered WDLs received during the month and not an indication of when the driver left Washington.

During the month of September (August 29, 2009 to September 26, 2009), a total of 11,409 out-of-state drivers obtained a Washington driver license. This is 2,264 fewer than the 13,673 who obtained licenses in September of 2008 (August 30, 2008 to September 27, 2008). For the 12 months ending September 2009, 131,756 out-of-state drivers obtained a Washington driver license, a decrease over the same period a year ago by 6.6 percent.

The table below displays data using a 12-month moving sum to help smooth out the monthly variance and reveal the trend. The graphs on the attached file display the results of this smoothing. The first graph plots new drivers moving into Washington.

	Sep 2009			Year Ending Sep 2009		
	2008	2009	% Change	2008	2009	% Change
<b>Total Drivers In</b>	<b>13,673</b>	<b>11,409</b>	<b>-16.6</b>	<b>141,071</b>	<b>131,756</b>	<b>-6.6</b>
<b>California</b>	2,598	2,123	-18.3	28,018	25,525	-8.9
<b>Oregon</b>	1,798	1,578	-12.2	18,309	19,469	6.3
<b>Texas</b>	623	554	-11.1	6,789	6,128	-9.7
<b>Returned WDL*</b>	5,739	4,833	-15.8	70,282	54,726	-22.1

\* Reliability of the surrendered license data is limited due to incomplete reporting (e.g. California only reports commercial driver licenses surrendered) as well as delays in the notification process by other jurisdictions.

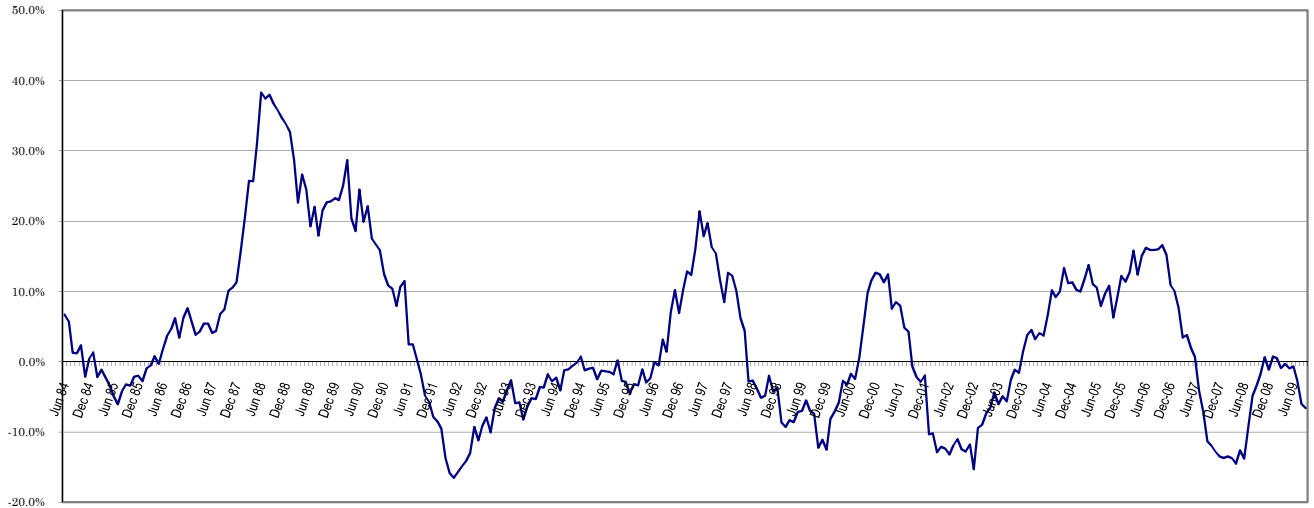
This report and supporting documentation are available via e-mail at the address below beginning with the April 1998 report. Our formats are PDF for the report and Excel for the data files.

Alice Vogel, Economic Analyst  
Department of Licensing  
Office of Budget and Economic Analysis  
Highways and Licensing Building  
Olympia, WA 98501-48018  
(360) 902-3986  
FAX: (360) 753-7500  
E-Mail: avogel@dol.wa.gov

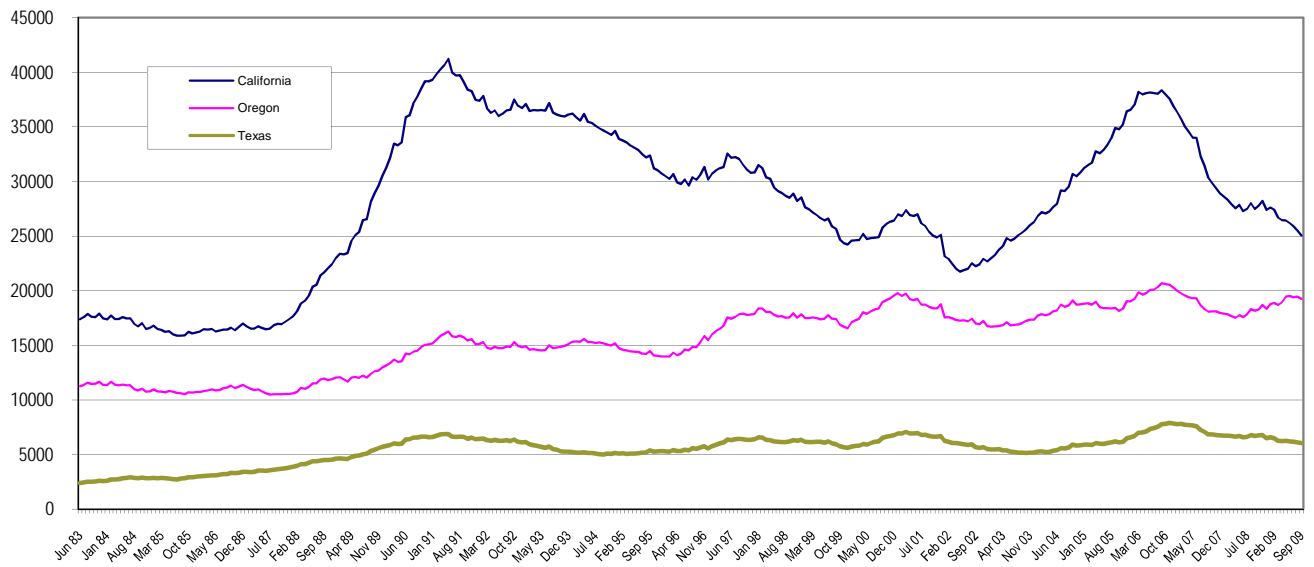
**Washington State Driver's Licenses  
(12 Month Moving Sum)**



**% Change Year Ago  
(12 Month Moving Sum)**



**Largest States  
(12 Months Moving Sum)**



## Net Increase States

Month: **September 2009**

<b>State</b>	<b>IN</b>	<b>OUT</b>	<b>Net in Migration</b>
ALABAMA	71	51	20
ALASKA	222	458	(236)
ARIZONA	454	0	454
ARKANSAS	57	56	1
CALIFORNIA	2123	0	2,123
COLORADO	308	365	(57)
CONNECTICUT	45	81	(36)
DELAWARE	17	173	(156)
FLORIDA	423	434	(11)
GEORGIA	179	372	(193)
HAWAII	180	47	133
IDAHO	474	20	454
ILLINOIS	205	77	128
INDIANA	103	0	103
IOWA	65	103	(38)
KANSAS	86	385	(299)
KENTUCKY	49	20	29
LOUISIANA	61	64	(3)
MAINE	47	13	34
MARYLAND	72	57	15
MASSACHUSETTS	106	1	105
MICHIGAN	299	121	178
MINNESOTA	159	38	121
MISSISSIPPI	37	202	(165)
MISSOURI	127	74	53
MONTANA	186	328	(142)
NEBRASKA	42	38	4
NEVADA	312	116	196
NEW HAMPSHIRE	24	25	(1)
NEW JERSEY	79	50	29
NEW MEXICO	101	21	80
NEW YORK	219	188	31
NORTH CAROLINA	364	105	259
NORTH DAKOTA	24	130	(106)
OHIO	161	44	117
OKLAHOMA	97	0	97
OREGON	1578	0	1,578
PENNSYLVANIA	171	5	166
RHODE ISLAND	18	22	(4)
SOUTH CAROLINA	74	77	(3)
SOUTH DAKOTA	30	0	30
TENNESSEE	138	0	138
TEXAS	554	0	554
UTAH	208	244	(36)
VERMONT	22	2	20
VIRGINIA	215	0	215
WASHINGTON	6	0	6
WEST VIRGINIA	8	0	8
WISCONSIN	156	138	18
WYOMING	37	55	(18)
WASH. DC	24	0	24
OUTSIDE U.S.	592	33	559
<b>TOTAL</b>	<b>11,409</b>	<b>4,833</b>	<b>6,576</b>

September 2009 Totals by Location Moved From, and By County Moved To

FROM/TO	TOTAL	GRAYS																			
		ADAMS	ASOTIN	BENTON	CHELAN	CLALLAM	CLARK	COLUMBIA	COWLITZ	DOUGLAS	FERRY	FRANKLIN	GARFIELD	GRANT	HARBOR	ISLAND	JEFFERSON	KING	KITSAP	KITTITAS	KLCKITAT
ALABAMA	71	0	0	4	0	0	4	0	1	0	0	1	0	0	0	3	0	16	8	0	0
ALASKA	222	1	1	3	0	3	9	0	4	3	1	2	2	3	3	6	1	55	10	3	3
ARIZONA	454	1	1	23	2	10	30	0	9	1	0	2	0	6	4	8	3	137	22	5	2
ARKANSAS	57	0	0	2	2	0	3	0	0	1	0	4	0	0	0	1	0	16	1	0	0
CALIFORNIA	2123	5	1	48	17	25	133	2	19	6	0	27	1	16	13	41	12	811	95	6	2
COLORADO	308	0	1	12	3	3	17	0	4	0	0	0	0	4	4	4	4	107	14	2	2
CONNECTICUT	45	0	0	1	0	0	0	0	0	0	0	0	0	0	0	1	0	29	5	0	0
DELAWARE	17	0	0	0	0	0	2	0	0	0	0	0	0	0	0	0	0	6	1	0	0
FLORIDA	423	3	0	9	4	2	25	0	3	0	0	1	0	1	2	19	2	152	19	1	1
GEORGIA	179	0	0	3	2	2	7	0	1	0	0	0	0	2	1	1	0	86	9	1	0
HAWAII	180	0	0	0	1	2	13	0	0	1	0	1	0	0	1	1	0	70	9	1	0
IDAHO	474	1	34	26	9	4	27	2	5	1	3	10	1	13	4	4	1	82	16	8	0
ILLINOIS	205	0	1	4	0	1	6	0	2	1	0	1	0	2	1	5	1	97	8	0	0
INDIANA	103	0	0	5	0	3	5	0	0	1	0	0	0	0	1	1	0	47	3	2	0
IOWA	65	0	0	1	2	0	4	0	1	2	0	0	0	0	0	1	1	26	2	0	0
KANSAS	86	0	0	1	0	2	8	0	0	0	0	2	0	0	0	0	0	28	8	0	0
KENTUCKY	49	0	1	1	0	0	1	0	0	0	0	0	0	0	0	0	0	14	2	0	0
LOUISIANA	61	0	0	2	0	1	2	0	1	0	0	0	0	0	0	0	0	23	3	2	0
MAINE	47	0	0	1	0	0	7	0	0	0	0	0	0	0	0	1	0	11	7	3	0
MARYLAND	72	0	0	2	1	1	3	0	1	0	0	0	0	0	0	1	0	33	5	1	0
MASSACHUSETTS	106	0	0	5	0	0	1	0	0	0	0	0	0	5	0	1	0	67	3	0	0
MICHIGAN	299	0	0	7	1	4	23	0	2	0	0	4	0	6	0	2	1	123	12	1	0
MINNESOTA	159	0	0	1	1	0	7	0	1	0	0	2	0	0	2	1	1	63	5	1	2
MISSISSIPPI	37	0	0	0	0	0	2	0	0	0	0	1	0	0	0	2	0	9	1	1	0
MISSOURI	127	0	0	3	3	3	4	0	1	0	0	0	0	0	0	2	0	57	4	1	0
MONTANA	186	0	2	2	1	1	5	0	1	2	2	2	0	9	4	3	0	40	11	4	2
NEBRASKA	42	0	0	5	1	0	1	0	0	0	0	0	0	0	0	0	0	16	2	2	0
NEVADA	312	2	1	19	4	3	24	0	6	0	0	7	1	6	2	13	1	80	12	0	0
NEW HAMPSHIRE	24	0	0	2	0	1	1	0	0	0	0	0	0	0	0	3	0	7	0	0	0
NEW JERSEY	79	0	0	0	0	1	1	0	1	0	0	0	0	0	1	0	0	46	1	0	0
NEW MEXICO	101	0	0	9	0	0	8	0	0	0	0	0	0	1	1	2	1	33	5	1	1
NEW YORK	219	0	0	9	1	3	6	0	2	1	0	0	0	0	1	1	1	123	14	0	0
NORTH CAROLINA	364	5	0	5	6	1	18	0	5	0	0	3	1	2	4	3	0	161	6	0	1
NORTH DAKOTA	24	0	0	0	2	0	1	0	1	0	0	1	0	0	1	0	0	9	0	1	0
OHIO	161	0	1	2	1	2	8	0	0	0	1	1	0	1	1	1	3	70	8	0	0
OKLAHOMA	97	0	0	0	0	2	9	0	3	0	0	2	0	1	1	2	0	22	5	0	0
OREGON	1578	11	1	45	13	12	490	1	44	3	6	44	0	16	8	12	4	308	23	9	22
PENNSYLVANIA	171	0	1	4	1	1	3	0	0	0	0	1	0	0	1	6	0	76	8	2	0
RHODE ISLAND	18	0	0	0	0	0	0	0	0	0	0	0	0	0	0	0	0	9	2	0	0
SOUTH CAROLINA	74	0	0	2	0	0	10	0	0	0	0	1	0	2	1	4	0	20	5	0	0
SOUTH DAKOTA	30	0	0	1	0	1	3	0	0	0	0	0	0	0	0	0	0	6	3	4	0
TENNESSEE	138	0	1	8	0	1	4	0	2	0	0	2	0	2	1	0	0	57	7	2	0
TEXAS	554	1	0	8	4	8	24	0	6	0	0	3	0	15	6	14	3	224	30	1	1
UTAH	208	1	0	5	1	0	14	0	1	0	2	4	0	1	4	4	4	64	8	1	1
VERMONT	22	0	0	0	0	0	0	0	0	0	0	0	0	0	0	2	0	10	3	0	0
VIRGINIA	215	0	0	4	0	1	4	0	1	0	0	0	0	4	0	6	2	90	22	2	0
WASHINGTON	6	0	0	0	0	0	3	0	0	0	0	0	0	0	0	0	0	2	0	0	0
WEST VIRGINIA	8	0	0	0	0	0	0	0	1	0	0	0	0	0	0	1	0	1	0	0	0
WISCONSIN	156	0	2	2	3	1	5	0	1	2	0	3	0	3	2	1	1	63	5	0	1
WYOMING	37	0	1	0	0	0	2	1	0	0	1	0	0	0	0	1	0	8	3	0	1
WASHINGTON D.C.	24	0	0	0	0	0	0	0	0	0	0	0	0	0	0	1	0	19	1	0	0
ARGENTINA	1	0	0	0	0	0	0	0	0	0	0	0	0	0	0	0	0	1	0	0	0
BELIZE (BRIT HONDU)	0	0	0	0	0	0	0	0	0	0	0	0	0	0	0	0	0	0	0	0	0
BOLIVIA	0	0	0	0	0	0	0	0	0	0	0	0	0	0	0	0	0	0	0	0	0
BRAZIL	29	0	0	0	0	0	2	0	2	0	0	0	0	0	3	0	0	19	0	0	0

**September 2009 Totals by Location Moved From, and By County Moved To**

FROM / TO	TOTAL	GRAYS																			
		ADAMS	ASOTIN	BENTON	CHELAN	CLALLAM	CLARK	COLUMBIA	COWLITZ	DOUGLAS	FERRY	FRANKLIN	GARFIELD	GRANT	HARBOR	ISLAND	JEFFERSON	KING	KITSAP	KITTITAS	KLCKITAT
CHILE	0	0	0	0	0	0	0	0	0	0	0	0	0	0	0	0	0	0	0	0	0
CANAL ZONE	0	0	0	0	0	0	0	0	0	0	0	0	0	0	0	0	0	0	0	0	0
COLUMBIA	1	0	0	0	0	0	0	0	0	0	0	0	0	0	0	0	0	1	0	0	0
COSTA RICA	1	0	0	0	0	0	0	0	0	0	0	0	0	0	0	0	0	1	0	0	0
EL SALVADOR	2	0	0	0	0	0	0	0	0	0	0	0	0	0	0	0	0	2	0	0	0
EQUADOR	4	0	0	0	0	0	0	0	0	0	0	0	0	0	0	0	0	1	0	0	0
GUYANA	0	0	0	0	0	0	0	0	0	0	0	0	0	0	0	0	0	0	0	0	0
NICARAGUA	1	0	0	0	0	0	0	0	0	0	0	0	0	0	0	0	0	0	0	0	0
PANAMA	2	0	0	0	0	0	0	0	0	0	0	0	0	0	0	0	0	2	0	0	0
PERU	6	0	0	0	0	0	2	0	0	0	0	0	0	0	0	0	0	2	0	0	0
PARAGUAY	1	0	0	0	0	0	0	0	0	0	0	0	0	0	0	0	0	1	0	0	0
SURINAM	0	0	0	0	0	0	0	0	0	0	0	0	0	0	0	0	0	0	0	0	0
TRINIDAD	0	0	0	0	0	0	0	0	0	0	0	0	0	0	0	0	0	0	0	0	0
UPPER VOLTA	0	0	0	0	0	0	0	0	0	0	0	0	0	0	0	0	0	0	0	0	0
URUGUAY	0	0	0	0	0	0	0	0	0	0	0	0	0	0	0	0	0	0	0	0	0
VENEZUELA	1	0	0	0	0	0	0	0	0	0	0	0	0	0	0	0	0	0	0	0	0
ALGERIA	0	0	0	0	0	0	0	0	0	0	0	0	0	0	0	0	0	0	0	0	0
ANGOLA	0	0	0	0	0	0	0	0	0	0	0	0	0	0	0	0	0	0	0	0	0
CAMERON	0	0	0	0	0	0	0	0	0	0	0	0	0	0	0	0	0	0	0	0	0
CHAD	0	0	0	0	0	0	0	0	0	0	0	0	0	0	0	0	0	0	0	0	0
CONGO	0	0	0	0	0	0	0	0	0	0	0	0	0	0	0	0	0	0	0	0	0
C. AFRICAN REP.	0	0	0	0	0	0	0	0	0	0	0	0	0	0	0	0	0	0	0	0	0
BOTSWANA	0	0	0	0	0	0	0	0	0	0	0	0	0	0	0	0	0	0	0	0	0
BURUNDI	1	0	0	0	0	0	0	0	0	0	0	0	0	0	0	0	0	1	0	0	0
DAHOMEY	0	0	0	0	0	0	0	0	0	0	0	0	0	0	0	0	0	0	0	0	0
EQ. GUINEA	0	0	0	0	0	0	0	0	0	0	0	0	0	0	0	0	0	0	0	0	0
EGYPT	0	0	0	0	0	0	0	0	0	0	0	0	0	0	0	0	0	0	0	0	0
ETHIOPIA	0	0	0	0	0	0	0	0	0	0	0	0	0	0	0	0	0	0	0	0	0
GABON	0	0	0	0	0	0	0	0	0	0	0	0	0	0	0	0	0	0	0	0	0
GAMBIA	0	0	0	0	0	0	0	0	0	0	0	0	0	0	0	0	0	0	0	0	0
GHANA	0	0	0	0	0	0	0	0	0	0	0	0	0	0	0	0	0	0	0	0	0
GUINEA	0	0	0	0	0	0	0	0	0	0	0	0	0	0	0	0	0	0	0	0	0
IVORY COAST	0	0	0	0	0	0	0	0	0	0	0	0	0	0	0	0	0	0	0	0	0
KENYA	1	0	0	0	0	0	0	0	0	0	0	0	0	0	0	0	0	1	0	0	0
LIBYA	0	0	0	0	0	0	0	0	0	0	0	0	0	0	0	0	0	0	0	0	0
LIBERIA	0	0	0	0	0	0	0	0	0	0	0	0	0	0	0	0	0	0	0	0	0
MALAWI	0	0	0	0	0	0	0	0	0	0	0	0	0	0	0	0	0	0	0	0	0
MALAGASY	0	0	0	0	0	0	0	0	0	0	0	0	0	0	0	0	0	0	0	0	0
MORROCCO	0	0	0	0	0	0	0	0	0	0	0	0	0	0	0	0	0	0	0	0	0
MAURITANIA	0	0	0	0	0	0	0	0	0	0	0	0	0	0	0	0	0	0	0	0	0
MALI	0	0	0	0	0	0	0	0	0	0	0	0	0	0	0	0	0	0	0	0	0
NIGER	0	0	0	0	0	0	0	0	0	0	0	0	0	0	0	0	0	0	0	0	0
NIGERIA	0	0	0	0	0	0	0	0	0	0	0	0	0	0	0	0	0	0	0	0	0
RHODESIA	0	0	0	0	0	0	0	0	0	0	0	0	0	0	0	0	0	0	0	0	0
RWANDA	0	0	0	0	0	0	0	0	0	0	0	0	0	0	0	0	0	0	0	0	0
SOUTH AFRICA	0	0	0	0	0	0	0	0	0	0	0	0	0	0	0	0	0	0	0	0	0
SOUTH WEST AFRICA	0	0	0	0	0	0	0	0	0	0	0	0	0	0	0	0	0	0	0	0	0
SIERRA LEONE	0	0	0	0	0	0	0	0	0	0	0	0	0	0	0	0	0	0	0	0	0
SWAZILAND	0	0	0	0	0	0	0	0	0	0	0	0	0	0	0	0	0	0	0	0	0
SENEGAL	0	0	0	0	0	0	0	0	0	0	0	0	0	0	0	0	0	0	0	0	0
SOMALI REPUBLIC	0	0	0	0	0	0	0	0	0	0	0	0	0	0	0	0	0	0	0	0	0
SUDAN	0	0	0	0	0	0	0	0	0	0	0	0	0	0	0	0	0	0	0	0	0
TOGO	0	0	0	0	0	0	0	0	0	0	0	0	0	0	0	0	0	0	0	0	0
TUNISIA	0	0	0	0	0	0	0	0	0	0	0	0	0	0	0	0	0	0	0	0	0
TANZANIA	0	0	0	0	0	0	0	0	0	0	0	0	0	0	0	0	0	0	0	0	0
UGANDA	0	0	0	0	0	0	0	0	0	0	0	0	0	0	0	0	0	0	0	0	0
ZAIRE	0	0	0	0	0	0	0	0	0	0	0	0	0	0	0	0	0	0	0	0	0

**September 2009 Totals by Location Moved From, and By County Moved To**

FROM / TO	TOTAL	GRAYS																			
		ADAMS	ASOTIN	BENTON	CHELAN	CLALLAM	CLARK	COLUMBIA	COWLITZ	DOUGLAS	FERRY	FRANKLIN	GARFIELD	GRANT	HARBOR	ISLAND	JEFFERSON	KING	KITSAP	KITTITAS	KLCKITAT
AFGHANISTAN	0	0	0	0	0	0	0	0	0	0	0	0	0	0	0	0	0	0	0	0	0
BANGLADESH	0	0	0	0	0	0	0	0	0	0	0	0	0	0	0	0	0	0	0	0	0
BHUTAN	0	0	0	0	0	0	0	0	0	0	0	0	0	0	0	0	0	0	0	0	0
BURMA	0	0	0	0	0	0	0	0	0	0	0	0	0	0	0	0	0	0	0	0	0
BAHRAIN	0	0	0	0	0	0	0	0	0	0	0	0	0	0	0	0	0	0	0	0	0
CEYLON (SRI LANKA)	0	0	0	0	0	0	0	0	0	0	0	0	0	0	0	0	0	0	0	0	0
CHINA	13	0	0	0	0	0	0	0	0	0	0	0	0	0	0	0	0	9	0	0	0
CAMBODIA	0	0	0	0	0	0	0	0	0	0	0	0	0	0	0	0	0	0	0	0	0
CYPRUS	0	0	0	0	0	0	0	0	0	0	0	0	0	0	0	0	0	0	0	0	0
JORDAN	1	0	0	0	0	0	0	0	0	0	0	0	0	0	0	0	0	1	0	0	0
JAPAN	11	0	0	0	0	0	0	0	0	0	0	0	0	0	0	0	0	11	0	0	0
KUWAIT	0	0	0	0	0	0	0	0	0	0	0	0	0	0	0	0	0	0	0	0	0
IRAN	1	0	0	0	0	0	0	0	0	0	0	0	0	0	0	0	0	0	0	0	0
ISRAEL	0	0	0	0	0	0	0	0	0	0	0	0	0	0	0	0	0	0	0	0	0
INDIA	29	0	0	0	0	0	0	0	0	0	0	0	0	0	0	0	0	29	0	0	0
IRAQ	0	0	0	0	0	0	0	0	0	0	0	0	0	0	0	0	0	0	0	0	0
INDONESIA	0	0	0	0	0	0	0	0	0	0	0	0	0	0	0	0	0	0	0	0	0
KOREA	27	0	0	0	0	0	0	0	0	0	0	0	0	0	0	0	0	18	0	0	0
LAOS	0	0	0	0	0	0	0	0	0	0	0	0	0	0	0	0	0	0	0	0	0
LEBANON	0	0	0	0	0	0	0	0	0	0	0	0	0	0	0	0	0	0	0	0	0
MALAYSIA	0	0	0	0	0	0	0	0	0	0	0	0	0	0	0	0	0	0	0	0	0
MONGOLIA	1	0	0	0	0	0	0	0	0	0	0	0	0	0	0	0	0	1	0	0	0
NEPAL	0	0	0	0	0	0	0	0	0	0	0	0	0	0	0	0	0	0	0	0	0
OMAN	0	0	0	0	0	0	0	0	0	0	0	0	0	0	0	0	0	0	0	0	0
PAKISTAN	1	0	0	0	0	0	0	0	0	0	0	0	0	0	0	0	0	1	0	0	0
QATAR	0	0	0	0	0	0	0	0	0	0	0	0	0	0	0	0	0	0	0	0	0
SIKKIM	0	0	0	0	0	0	0	0	0	0	0	0	0	0	0	0	0	0	0	0	0
SYRIA	0	0	0	0	0	0	0	0	0	0	0	0	0	0	0	0	0	0	0	0	0
SAUDI ARABIA	1	0	0	0	0	0	0	0	0	0	0	0	0	0	0	0	0	1	0	0	0
SINGAPORE	2	0	0	0	0	0	0	0	0	0	0	0	0	0	0	0	0	2	0	0	0
TAIWAN	1	0	0	0	0	0	0	0	0	0	0	0	0	0	0	0	0	0	0	0	0
THAILAND	0	0	0	0	0	0	0	0	0	0	0	0	0	0	0	0	0	0	0	0	0
TURKEY	2	0	0	0	0	0	0	0	0	0	0	0	0	0	0	0	0	2	0	0	0
USSR	2	0	0	0	0	0	0	0	0	0	0	0	0	0	0	0	0	2	0	0	0
UNITED ARAB EMIRATE	1	0	0	0	0	0	0	0	0	0	0	0	0	0	0	0	0	1	0	0	0
VIETNAM	1	0	0	0	0	0	0	0	0	0	0	0	0	0	0	0	0	0	0	0	0
YEMEN	0	0	0	0	0	0	0	0	0	0	0	0	0	0	0	0	0	0	0	0	0
AUSTRIA	1	0	0	0	0	0	0	0	0	0	0	0	0	0	0	0	0	1	0	0	0
BULGARIA	2	0	0	0	0	0	0	0	0	0	0	0	0	0	0	0	0	2	0	0	0
BELGIUM	0	0	0	0	0	0	0	0	0	0	0	0	0	0	0	0	0	0	0	0	0
DENMARK	2	0	0	0	0	0	0	0	0	0	0	0	0	0	0	0	0	2	0	0	0
ENGLAND	6	0	0	0	0	0	0	0	0	1	0	0	0	0	0	0	0	4	0	0	0
FRANCE	1	0	0	0	0	0	0	0	0	0	0	0	0	0	0	0	0	1	0	0	0
FINLAND	1	0	0	0	0	0	0	0	0	0	0	0	0	0	0	0	0	1	0	0	0
CZECHOSLAVAKIA	0	0	0	0	0	0	0	0	0	0	0	0	0	0	0	0	0	0	0	0	0
GREECE	3	0	0	0	0	0	0	0	0	0	0	0	0	0	0	0	0	2	0	0	0
GERMANY	35	0	0	0	0	0	1	0	0	0	0	0	0	0	0	0	0	22	0	0	0
IRELAND	2	0	0	0	0	0	0	0	0	0	0	0	0	0	0	0	0	2	0	0	0
ITALY	2	0	0	0	0	0	0	0	0	0	0	0	0	0	0	0	0	2	0	0	0
HUNGARY	1	0	0	0	0	0	0	0	0	0	0	0	0	0	0	0	0	1	0	0	0
LUXEMBOURG	0	0	0	0	0	0	0	0	0	0	0	0	0	0	0	0	0	0	0	0	0
NETHERLANDS	4	0	0	0	0	0	0	0	0	0	0	0	0	0	0	0	0	3	1	0	0
NORWAY	0	0	0	0	0	0	0	0	0	0	0	0	0	0	0	0	0	0	0	0	0
POLAND	3	0	0	0	0	0	0	0	0	0	0	0	0	0	0	0	0	2	0	0	0
SPAIN	2	0	0	0	0	0	0	0	0	0	0	0	0	0	1	0	0	1	0	0	0
SWITZERLAND	1	0	0	0	0	0	0	0	0	0	0	0	0	0	0	0	0	1	0	0	0
SWEDEN	2	0	0	0	0	0	0	0	0	0	0	0	0	0	0	0	0	2	0	0	0

**September 2009 Totals by Location Moved From, and By County Moved To**

FROM / TO	TOTAL	GRAYS																			
		ADAMS	ASOTIN	BENTON	CHELAN	CLALLAM	CLARK	COLUMBIA	COWLITZ	DOUGLAS	FERRY	FRANKLIN	GARFIELD	GRANT	HARBOR	ISLAND	JEFFERSON	KING	KITSAP	KITTITAS	KLCKITAT
ROMANIA	4	0	0	0	0	0	1	0	0	0	0	0	0	0	0	0	0	1	0	0	0
YUGOSLAVIA	0	0	0	0	0	0	0	0	0	0	0	0	0	0	0	0	0	0	0	0	0
ALBANIA	0	0	0	0	0	0	0	0	0	0	0	0	0	0	0	0	0	0	0	0	0
ANDORRA	0	0	0	0	0	0	0	0	0	0	0	0	0	0	0	0	0	0	0	0	0
AMERICAN SAMOA	24	0	0	0	0	0	1	0	0	0	0	1	0	0	0	0	0	12	1	0	0
BORNEO	0	0	0	0	0	0	0	0	0	0	0	0	0	0	0	0	0	0	0	0	0
CUBA	0	0	0	0	0	0	0	0	0	0	0	0	0	0	0	0	0	0	0	0	0
BERMUDA	0	0	0	0	0	0	0	0	0	0	0	0	0	0	0	0	0	0	0	0	0
DOMINICAN REPUBLIC	0	0	0	0	0	0	0	0	0	0	0	0	0	0	0	0	0	0	0	0	0
FIJI	0	0	0	0	0	0	0	0	0	0	0	0	0	0	0	0	0	0	0	0	0
GUAM	30	0	0	0	0	0	0	0	0	0	0	0	0	0	1	0	6	5	0	0	0
HAITI	0	0	0	0	0	0	0	0	0	0	0	0	0	0	0	0	0	0	0	0	0
JAMAICA	0	0	0	0	0	0	0	0	0	0	0	0	0	0	0	0	0	0	0	0	0
NEW ZEALAND	0	0	0	0	0	0	0	0	0	0	0	0	0	0	0	0	0	0	0	0	0
PORTUGAL	0	0	0	0	0	0	0	0	0	0	0	0	0	0	0	0	0	0	0	0	0
PHILIPPINES	9	0	0	0	0	0	0	0	0	0	0	0	1	0	0	0	7	0	0	0	0
PUERTO RICO	10	0	0	0	0	0	0	0	0	0	1	0	0	0	0	0	2	0	0	0	0
TAHITI	0	0	0	0	0	0	0	0	0	0	0	0	0	0	0	0	0	0	0	0	0
TONGA	0	0	0	0	0	0	0	0	0	0	0	0	0	0	0	0	0	0	0	0	0
VIRGIN ISLANDS	2	0	0	0	0	0	0	0	0	0	0	0	0	0	0	0	2	0	0	0	0
WEST SAMOA	0	0	0	0	0	0	0	0	0	0	0	0	0	0	0	0	0	0	0	0	0
AUSTRALIA	1	0	0	0	0	0	0	0	0	0	0	0	0	0	0	0	1	0	0	0	0
ANTARTICA	0	0	0	0	0	0	0	0	0	0	0	0	0	0	0	0	0	0	0	0	0
ICELAND	0	0	0	0	0	0	0	0	0	0	0	0	0	0	0	0	0	0	0	0	0
GREENLAND	0	0	0	0	0	0	0	0	0	0	0	0	0	0	0	0	0	0	0	0	0
MEXICO	127	5	0	6	8	0	8	0	1	4	0	16	0	3	0	0	1	29	0	0	0
ALBERTA	5	0	0	0	0	0	0	0	0	0	0	0	0	0	0	0	3	0	0	0	0
BRITISH COLUMBIA	92	0	0	1	0	0	1	0	0	0	0	0	0	0	5	0	48	2	0	0	0
MANITOBA	0	0	0	0	0	0	0	0	0	0	0	0	0	0	0	0	0	0	0	0	0
NEW BRUNSWICK	0	0	0	0	0	0	0	0	0	0	0	0	0	0	0	0	0	0	0	0	0
NEWFOUNDLAND	1	0	0	0	0	0	0	0	0	0	0	0	0	0	0	0	1	0	0	0	0
NOVA SCOTIA	1	0	0	0	0	0	0	0	0	0	0	0	0	0	0	0	0	1	0	0	0
ONTARIO	32	0	0	0	0	2	5	0	0	0	0	0	0	0	1	0	21	0	0	0	0
PRINCE EDWARD IS.	0	0	0	0	0	0	0	0	0	0	0	0	0	0	0	0	0	0	0	0	0
QUEBEC	3	0	0	0	0	0	0	0	0	0	1	0	0	0	0	0	2	0	0	0	0
SASKATCHEWAN	1	0	0	0	0	0	0	0	0	0	0	0	0	0	0	0	1	0	0	0	0
NORTHWEST TERRITORY	0	0	0	0	0	0	0	0	0	0	0	0	0	0	0	0	0	0	0	0	0
YUKON TERRITORY	0	0	0	0	0	0	0	0	0	0	0	0	0	0	0	0	0	0	0	0	0
UNKNOWN	37	0	0	0	1	1	2	0	0	0	0	0	0	1	0	0	16	0	1	0	0
<b>** TOTAL **</b>	<b>11409</b>	<b>36</b>	<b>50</b>	<b>303</b>	<b>95</b>	<b>108</b>	<b>1010</b>	<b>6</b>	<b>133</b>	<b>30</b>	<b>17</b>	<b>150</b>	<b>6</b>	<b>126</b>	<b>78</b>	<b>194</b>	<b>48</b>	<b>4040</b>	<b>466</b>	<b>69</b>	<b>42</b>

September 2009 Totals by Location Moved From, and By County Moved To

FROM / TO	LEWIS	LINCOLN	MASON	OKANAGON	PACIFIC	PEND OREILLE	PIERCE	SAN JUAN	SKAGIT	SKAMANIA	SNOHOMISH	SPOKANE	STEVENS	THURSTON	WAHAKIAKUM	WALLA WALLA	WHATCOM	WHITMAN	YAKIMA	UNKNOWN
ALABAMA	0	0	0	0	0	0	10	1	0	0	7	6	0	3	0	0	3	0	4	0
ALASKA	2	0	2	1	3	2	26	1	5	0	10	21	6	12	0	4	6	2	6	0
ARIZONA	3	0	10	4	1	1	49	0	5	0	26	30	2	14	0	3	19	6	15	0
ARKANSAS	0	0	0	0	0	0	6	0	0	0	4	7	2	3	0	0	2	0	3	0
CALIFORNIA	26	2	20	13	7	1	204	14	35	3	170	106	6	77	0	17	72	28	38	4
COLORADO	2	4	3	2	0	1	29	1	3	0	19	23	1	11	0	5	16	3	4	0
CONNECTICUT	0	0	0	0	0	0	5	0	0	0	2	1	0	1	0	0	0	0	0	0
DELAWARE	0	0	0	1	1	0	2	0	0	0	0	2	0	0	0	0	0	0	2	0
FLORIDA	3	0	4	2	2	0	57	3	3	3	42	20	5	13	1	1	15	3	2	0
GEORGIA	1	0	0	0	0	0	20	0	1	0	9	11	1	11	0	0	7	0	3	0
HAWAII	1	0	0	0	0	0	18	3	5	0	18	8	2	15	1	2	3	2	2	0
IDAHO	5	1	3	4	1	4	26	2	4	1	18	90	6	6	0	8	9	28	6	1
ILLINOIS	1	1	1	0	0	0	24	0	0	0	10	16	0	9	0	1	4	6	2	0
INDIANA	0	1	0	0	1	0	9	0	0	0	6	5	0	7	0	0	3	0	3	0
IOWA	1	0	0	0	0	0	6	1	0	0	1	4	0	7	0	2	2	0	1	0
KANSAS	0	0	2	0	0	0	13	0	2	0	5	6	0	3	0	1	0	1	3	1
KENTUCKY	1	0	0	0	0	0	15	0	0	0	5	3	0	2	0	1	1	2	0	0
LOUISIANA	1	0	0	0	0	0	15	0	0	0	0	3	0	0	0	1	2	3	0	2
MAINE	0	0	0	1	0	0	6	0	3	0	1	0	2	0	0	1	3	0	0	0
MARYLAND	0	0	0	0	0	0	9	0	0	0	9	2	0	2	0	0	1	1	0	0
MASSACHUSETTS	0	0	0	0	0	0	5	1	2	0	4	2	0	5	0	0	4	1	0	0
MICHIGAN	0	1	1	3	1	0	25	0	5	0	28	14	0	11	0	0	10	5	9	0
MINNESOTA	2	0	0	0	0	0	19	0	1	0	21	10	1	9	0	1	5	3	0	0
MISSISSIPPI	0	0	2	0	0	0	10	0	0	0	2	3	0	1	0	0	2	1	0	0
MISSOURI	0	0	1	2	0	0	18	0	1	1	8	5	3	4	0	0	3	2	1	0
MONTANA	2	0	1	2	0	2	8	2	7	0	9	31	6	5	1	2	7	4	6	0
NEBRASKA	0	0	0	0	0	0	3	0	1	0	3	4	0	1	0	0	0	0	3	0
NEVADA	4	0	1	3	2	1	27	0	8	0	20	33	4	9	0	1	8	4	6	0
NEW HAMPSHIRE	1	0	0	0	0	0	2	0	0	0	2	1	0	2	0	0	1	0	1	0
NEW JERSEY	0	0	0	0	0	0	11	0	1	0	5	1	2	2	0	0	4	1	1	0
NEW MEXICO	1	0	2	1	0	0	10	1	3	2	3	9	0	0	0	2	3	2	0	0
NEW YORK	0	0	1	0	2	0	18	3	0	1	11	6	0	4	0	1	4	4	2	0
NORTH CAROLINA	2	0	1	5	0	0	55	0	3	0	22	11	0	12	0	1	11	0	20	0
NORTH DAKOTA	1	0	0	1	0	0	2	0	0	0	0	2	0	0	0	0	1	0	1	0
OHIO	2	1	1	0	0	0	22	2	1	0	12	9	1	4	0	0	2	2	2	0
OKLAHOMA	0	0	0	1	1	0	14	0	2	0	10	10	0	6	0	0	2	1	3	0
OREGON	19	0	8	12	13	2	82	7	23	7	73	63	6	38	0	42	23	17	71	0
PENNSYLVANIA	0	0	1	0	1	0	20	1	3	1	15	3	2	10	0	0	6	3	1	0
RHODE ISLAND	0	0	0	0	0	0	2	0	0	0	1	2	0	2	0	0	0	0	0	0
SOUTH CAROLINA	0	0	1	0	0	0	8	0	0	0	9	2	1	3	0	1	3	1	0	0
SOUTH DAKOTA	0	0	0	0	1	0	1	0	0	1	3	4	1	0	0	0	0	0	1	0
TENNESSEE	1	0	1	0	0	0	11	0	1	0	10	1	0	6	0	4	5	3	8	0
TEXAS	2	0	2	2	1	2	61	2	13	0	39	18	0	21	0	7	22	1	12	1
UTAH	0	0	2	2	0	0	17	2	1	0	16	17	2	9	0	5	8	4	8	0
VERMONT	0	0	1	1	0	0	2	0	0	0	1	1	0	0	0	0	1	0	0	0
VIRGINIA	0	0	1	0	0	0	36	1	2	0	16	9	1	1	0	0	5	3	4	0
WASHINGTON	0	0	0	0	0	0	0	0	0	0	0	1	0	0	0	0	0	0	0	0
WEST VIRGINIA	0	0	0	0	0	0	0	0	1	0	1	1	0	0	0	0	0	2	0	0
WISCONSIN	0	0	1	2	0	0	14	0	2	0	11	9	0	8	0	0	7	1	6	0
WYOMING	2	0	0	0	0	0	4	0	2	0	2	4	1	0	0	0	2	0	1	1
WASHINGTON D.C.	0	0	0	0	0	0	1	0	0	0	1	0	0	0	0	0	0	0	1	0
ARGENTINA	0	0	0	0	0	0	0	0	0	0	0	0	0	0	0	0	0	0	0	0
BELIZE (BRIT HONDU)	0	0	0	0	0	0	0	0	0	0	0	0	0	0	0	0	0	0	0	0
BOLIVIA	0	0	0	0	0	0	0	0	0	0	0	0	0	0	0	0	0	0	0	0
BRAZIL	0	0	0	0	0	0	0	0	0	0	0	0	0	2	0	0	1	0	0	0

September 2009 Totals by Location Moved From, and By County Moved To

FROM / TO	LEWIS	LINCOLN	MASON	OKANAGON	PACIFIC	PEND OREILLE	PIERCE	SAN JUAN	SKAGIT	SKAMANIA	SNOHOMISH	SPOKANE	STEVENS	THURSTON	WAHKIAKUM	WALLA WALLA	WHATCOM	WHITMAN	YAKIMA	UNKNOWN
CHILE	0	0	0	0	0	0	0	0	0	0	0	0	0	0	0	0	0	0	0	0
CANAL ZONE	0	0	0	0	0	0	0	0	0	0	0	0	0	0	0	0	0	0	0	0
COLUMBIA	0	0	0	0	0	0	0	0	0	0	0	0	0	0	0	0	0	0	0	0
COSTA RICA	0	0	0	0	0	0	0	0	0	0	0	0	0	0	0	0	0	0	0	0
EL SALVADOR	0	0	0	0	0	0	0	0	0	0	0	0	0	0	0	0	0	0	0	0
EQUADOR	0	0	0	0	0	0	0	0	0	0	1	0	0	0	0	2	0	0	0	0
GUYANA	0	0	0	0	0	0	0	0	0	0	0	0	0	0	0	0	0	0	0	0
NICARAGUA	0	0	0	0	0	0	0	0	0	1	0	0	0	0	0	0	0	0	0	0
PANAMA	0	0	0	0	0	0	0	0	0	0	0	0	0	0	0	0	0	0	0	0
PERU	0	0	0	0	0	0	1	0	0	0	0	1	0	0	0	0	0	0	0	0
PARAGUAY	0	0	0	0	0	0	0	0	0	0	0	0	0	0	0	0	0	0	0	0
SURINAM	0	0	0	0	0	0	0	0	0	0	0	0	0	0	0	0	0	0	0	0
TRINIDAD	0	0	0	0	0	0	0	0	0	0	0	0	0	0	0	0	0	0	0	0
UPPER VOLTA	0	0	0	0	0	0	0	0	0	0	0	0	0	0	0	0	0	0	0	0
URUGUAY	0	0	0	0	0	0	0	0	0	0	0	0	0	0	0	0	0	0	0	0
VENEZUELA	0	0	0	0	0	0	0	0	0	0	1	0	0	0	0	0	0	0	0	0
ALGERIA	0	0	0	0	0	0	0	0	0	0	0	0	0	0	0	0	0	0	0	0
ANGOLA	0	0	0	0	0	0	0	0	0	0	0	0	0	0	0	0	0	0	0	0
CAMERON	0	0	0	0	0	0	0	0	0	0	0	0	0	0	0	0	0	0	0	0
CHAD	0	0	0	0	0	0	0	0	0	0	0	0	0	0	0	0	0	0	0	0
CONGO	0	0	0	0	0	0	0	0	0	0	0	0	0	0	0	0	0	0	0	0
C. AFRICAN REP.	0	0	0	0	0	0	0	0	0	0	0	0	0	0	0	0	0	0	0	0
BOTSWANA	0	0	0	0	0	0	0	0	0	0	0	0	0	0	0	0	0	0	0	0
BURUNDI	0	0	0	0	0	0	0	0	0	0	0	0	0	0	0	0	0	0	0	0
DAHOMY	0	0	0	0	0	0	0	0	0	0	0	0	0	0	0	0	0	0	0	0
EQ. GUINEA	0	0	0	0	0	0	0	0	0	0	0	0	0	0	0	0	0	0	0	0
EGYPT	0	0	0	0	0	0	0	0	0	0	0	0	0	0	0	0	0	0	0	0
ETHIOPIA	0	0	0	0	0	0	0	0	0	0	0	0	0	0	0	0	0	0	0	0
GABON	0	0	0	0	0	0	0	0	0	0	0	0	0	0	0	0	0	0	0	0
GAMBIA	0	0	0	0	0	0	0	0	0	0	0	0	0	0	0	0	0	0	0	0
GHANA	0	0	0	0	0	0	0	0	0	0	0	0	0	0	0	0	0	0	0	0
GUINEA	0	0	0	0	0	0	0	0	0	0	0	0	0	0	0	0	0	0	0	0
IVORY COAST	0	0	0	0	0	0	0	0	0	0	0	0	0	0	0	0	0	0	0	0
KENYA	0	0	0	0	0	0	0	0	0	0	0	0	0	0	0	0	0	0	0	0
LIBYA	0	0	0	0	0	0	0	0	0	0	0	0	0	0	0	0	0	0	0	0
LIBERIA	0	0	0	0	0	0	0	0	0	0	0	0	0	0	0	0	0	0	0	0
MALAWI	0	0	0	0	0	0	0	0	0	0	0	0	0	0	0	0	0	0	0	0
MALAGASY	0	0	0	0	0	0	0	0	0	0	0	0	0	0	0	0	0	0	0	0
MORROCCO	0	0	0	0	0	0	0	0	0	0	0	0	0	0	0	0	0	0	0	0
MAURITANIA	0	0	0	0	0	0	0	0	0	0	0	0	0	0	0	0	0	0	0	0
MALI	0	0	0	0	0	0	0	0	0	0	0	0	0	0	0	0	0	0	0	0
NIGER	0	0	0	0	0	0	0	0	0	0	0	0	0	0	0	0	0	0	0	0
NIGERIA	0	0	0	0	0	0	0	0	0	0	0	0	0	0	0	0	0	0	0	0
RHODESIA	0	0	0	0	0	0	0	0	0	0	0	0	0	0	0	0	0	0	0	0
RWANDA	0	0	0	0	0	0	0	0	0	0	0	0	0	0	0	0	0	0	0	0
SOUTH AFRICA	0	0	0	0	0	0	0	0	0	0	0	0	0	0	0	0	0	0	0	0
SOUTH WEST AFRICA	0	0	0	0	0	0	0	0	0	0	0	0	0	0	0	0	0	0	0	0
SIERRA LEONE	0	0	0	0	0	0	0	0	0	0	0	0	0	0	0	0	0	0	0	0
SWAZILAND	0	0	0	0	0	0	0	0	0	0	0	0	0	0	0	0	0	0	0	0
SENEGAL	0	0	0	0	0	0	0	0	0	0	0	0	0	0	0	0	0	0	0	0
SOMALI REPUBLIC	0	0	0	0	0	0	0	0	0	0	0	0	0	0	0	0	0	0	0	0
SUDAN	0	0	0	0	0	0	0	0	0	0	0	0	0	0	0	0	0	0	0	0
TOGO	0	0	0	0	0	0	0	0	0	0	0	0	0	0	0	0	0	0	0	0
TUNISIA	0	0	0	0	0	0	0	0	0	0	0	0	0	0	0	0	0	0	0	0
TANZANIA	0	0	0	0	0	0	0	0	0	0	0	0	0	0	0	0	0	0	0	0
UGANDA	0	0	0	0	0	0	0	0	0	0	0	0	0	0	0	0	0	0	0	0
ZAIRE	0	0	0	0	0	0	0	0	0	0	0	0	0	0	0	0	0	0	0	0

September 2009 Totals by Location Moved From, and By County Moved To

FROM / TO	LEWIS	LINCOLN	MASON	OKANAGON	PACIFIC	PEND OREILLE	PIERCE	SAN JUAN	SKAGIT	SKAMANIA	SNOHOMISH	SPOKANE	STEVENS	THURSTON	WAHKIAKUM	WALLA WALLA	WHATCOM	WHITMAN	YAKIMA	UNKNOWN
AFGHANISTAN	0	0	0	0	0	0	0	0	0	0	0	0	0	0	0	0	0	0	0	0
BANGLADESH	0	0	0	0	0	0	0	0	0	0	0	0	0	0	0	0	0	0	0	0
BHUTAN	0	0	0	0	0	0	0	0	0	0	0	0	0	0	0	0	0	0	0	0
BURMA	0	0	0	0	0	0	0	0	0	0	0	0	0	0	0	0	0	0	0	0
BAHRAIN	0	0	0	0	0	0	0	0	0	0	0	0	0	0	0	0	0	0	0	0
CEYLON (SRI LANKA)	0	0	0	0	0	0	0	0	0	0	0	0	0	0	0	0	0	0	0	0
CHINA	0	0	0	0	0	0	0	0	0	0	0	0	0	0	0	0	0	4	0	0
CAMBODIA	0	0	0	0	0	0	0	0	0	0	0	0	0	0	0	0	0	0	0	0
CYPRUS	0	0	0	0	0	0	0	0	0	0	0	0	0	0	0	0	0	0	0	0
JORDAN	0	0	0	0	0	0	0	0	0	0	0	0	0	0	0	0	0	0	0	0
JAPAN	0	0	0	0	0	0	0	0	0	0	0	0	0	0	0	0	0	0	0	0
KUWAIT	0	0	0	0	0	0	0	0	0	0	0	0	0	0	0	0	0	0	0	0
IRAN	0	0	0	0	0	0	0	0	0	0	0	0	0	0	0	0	0	1	0	0
ISRAEL	0	0	0	0	0	0	0	0	0	0	0	0	0	0	0	0	0	0	0	0
INDIA	0	0	0	0	0	0	0	0	0	0	0	0	0	0	0	0	0	0	0	0
IRAQ	0	0	0	0	0	0	0	0	0	0	0	0	0	0	0	0	0	0	0	0
INDONESIA	0	0	0	0	0	0	0	0	0	0	0	0	0	0	0	0	0	0	0	0
KOREA	3	0	0	0	0	0	0	0	0	0	3	0	0	1	0	0	0	2	0	0
LAOS	0	0	0	0	0	0	0	0	0	0	0	0	0	0	0	0	0	0	0	0
LEBANON	0	0	0	0	0	0	0	0	0	0	0	0	0	0	0	0	0	0	0	0
MALAYSIA	0	0	0	0	0	0	0	0	0	0	0	0	0	0	0	0	0	0	0	0
MONGOLIA	0	0	0	0	0	0	0	0	0	0	0	0	0	0	0	0	0	0	0	0
NEPAL	0	0	0	0	0	0	0	0	0	0	0	0	0	0	0	0	0	0	0	0
OMAN	0	0	0	0	0	0	0	0	0	0	0	0	0	0	0	0	0	0	0	0
PAKISTAN	0	0	0	0	0	0	0	0	0	0	0	0	0	0	0	0	0	0	0	0
QATAR	0	0	0	0	0	0	0	0	0	0	0	0	0	0	0	0	0	0	0	0
SIKKIM	0	0	0	0	0	0	0	0	0	0	0	0	0	0	0	0	0	0	0	0
SYRIA	0	0	0	0	0	0	0	0	0	0	0	0	0	0	0	0	0	0	0	0
SAUDI ARABIA	0	0	0	0	0	0	0	0	0	0	0	0	0	0	0	0	0	0	0	0
SINGAPORE	0	0	0	0	0	0	0	0	0	0	0	0	0	0	0	0	0	0	0	0
TAIWAN	0	0	0	0	0	0	0	0	0	1	0	0	0	0	0	0	0	0	0	0
THAILAND	0	0	0	0	0	0	0	0	0	0	0	0	0	0	0	0	0	0	0	0
TURKEY	0	0	0	0	0	0	0	0	0	0	0	0	0	0	0	0	0	0	0	0
USSR	0	0	0	0	0	0	0	0	0	0	0	0	0	0	0	0	0	0	0	0
UNITED ARAB EMIRATE	0	0	0	0	0	0	0	0	0	0	0	0	0	0	0	0	0	0	0	0
VIETNAM	0	0	0	0	0	0	0	0	0	0	0	0	0	0	0	0	0	1	0	0
YEMEN	0	0	0	0	0	0	0	0	0	0	0	0	0	0	0	0	0	0	0	0
AUSTRIA	0	0	0	0	0	0	0	0	0	0	0	0	0	0	0	0	0	0	0	0
BULGARIA	0	0	0	0	0	0	0	0	0	0	0	0	0	0	0	0	0	0	0	0
BELGIUM	0	0	0	0	0	0	0	0	0	0	0	0	0	0	0	0	0	0	0	0
DENMARK	0	0	0	0	0	0	0	0	0	0	0	0	0	0	0	0	0	0	0	0
ENGLAND	0	0	0	0	0	0	0	0	0	0	0	0	0	0	0	0	0	1	0	0
FRANCE	0	0	0	0	0	0	0	0	0	0	0	0	0	0	0	0	0	0	0	0
FINLAND	0	0	0	0	0	0	0	0	0	0	0	0	0	0	0	0	0	0	0	0
CZECHOSLAVAKIA	0	0	0	0	0	0	0	0	0	0	0	0	0	0	0	0	0	0	0	0
GREECE	0	0	0	0	0	0	1	0	0	0	0	0	0	0	0	0	0	0	0	0
GERMANY	0	0	0	0	0	0	4	0	0	0	4	1	0	1	0	1	0	1	0	0
IRELAND	0	0	0	0	0	0	0	0	0	0	0	0	0	0	0	0	0	0	0	0
ITALY	0	0	0	0	0	0	0	0	0	0	0	0	0	0	0	0	0	0	0	0
HUNGARY	0	0	0	0	0	0	0	0	0	0	0	0	0	0	0	0	0	0	0	0
LUXEMBOURG	0	0	0	0	0	0	0	0	0	0	0	0	0	0	0	0	0	0	0	0
NETHERLANDS	0	0	0	0	0	0	0	0	0	0	0	0	0	0	0	0	0	0	0	0
NORWAY	0	0	0	0	0	0	0	0	0	0	0	0	0	0	0	0	0	0	0	0
POLAND	0	0	0	0	0	0	1	0	0	0	0	0	0	0	0	0	0	0	0	0
SPAIN	0	0	0	0	0	0	0	0	0	0	0	0	0	0	0	0	0	0	0	0
SWITZERLAND	0	0	0	0	0	0	0	0	0	0	0	0	0	0	0	0	0	0	0	0
SWEDEN	0	0	0	0	0	0	0	0	0	0	0	0	0	0	0	0	0	0	0	0

**September 2009 Totals by Location Moved From, and By County Moved To**

FROM / TO	LEWIS	LINCOLN	MASON	OKANAGON	PACIFIC	PEND OREILLE	PIERCE	SAN JUAN	SKAGIT	SKAMANIA	SNOHOMISH	SPOKANE	STEVENS	THURSTON	WAHKIAKUM	WALLA	WHATCOM	WHITMAN	YAKIMA	UNKNOWN
ROMANIA	0	0	0	0	0	0	0	0	0	0	2	0	0	0	0	0	0	0	0	0
YUGOSLAVIA	0	0	0	0	0	0	0	0	0	0	0	0	0	0	0	0	0	0	0	0
ALBANIA	0	0	0	0	0	0	0	0	0	0	0	0	0	0	0	0	0	0	0	0
ANDORRA	0	0	0	0	0	0	0	0	0	0	0	0	0	0	0	0	0	0	0	0
AMERICAN SAMOA	0	0	0	0	0	0	9	0	0	0	0	0	0	0	0	0	0	0	0	0
BORNEO	0	0	0	0	0	0	0	0	0	0	0	0	0	0	0	0	0	0	0	0
CUBA	0	0	0	0	0	0	0	0	0	0	0	0	0	0	0	0	0	0	0	0
BERMUDA	0	0	0	0	0	0	0	0	0	0	0	0	0	0	0	0	0	0	0	0
DOMINICAN REPUBLIC	0	0	0	0	0	0	0	0	0	0	0	0	0	0	0	0	0	0	0	0
FIJI	0	0	0	0	0	0	0	0	0	0	0	0	0	0	0	0	0	0	0	0
GUAM	0	0	0	0	0	0	9	0	0	0	5	1	0	2	0	0	1	0	0	0
HAITI	0	0	0	0	0	0	0	0	0	0	0	0	0	0	0	0	0	0	0	0
JAMAICA	0	0	0	0	0	0	0	0	0	0	0	0	0	0	0	0	0	0	0	0
NEW ZEALAND	0	0	0	0	0	0	0	0	0	0	0	0	0	0	0	0	0	0	0	0
PORTUGAL	0	0	0	0	0	0	0	0	0	0	0	0	0	0	0	0	0	0	0	0
PHILIPPINES	0	0	0	0	0	0	1	0	0	0	0	0	0	0	0	0	0	0	0	0
PUERTO RICO	0	0	0	0	0	0	3	0	0	0	2	0	0	2	0	0	0	0	0	0
TAHITI	0	0	0	0	0	0	0	0	0	0	0	0	0	0	0	0	0	0	0	0
TONGA	0	0	0	0	0	0	0	0	0	0	0	0	0	0	0	0	0	0	0	0
VIRGIN ISLANDS	0	0	0	0	0	0	0	0	0	0	0	0	0	0	0	0	0	0	0	0
WEST SAMOA	0	0	0	0	0	0	0	0	0	0	0	0	0	0	0	0	0	0	0	0
AUSTRALIA	0	0	0	0	0	0	0	0	0	0	0	0	0	0	0	0	0	0	0	0
ANTARTICA	0	0	0	0	0	0	0	0	0	0	0	0	0	0	0	0	0	0	0	0
ICELAND	0	0	0	0	0	0	0	0	0	0	0	0	0	0	0	0	0	0	0	0
GREENLAND	0	0	0	0	0	0	0	0	0	0	0	0	0	0	0	0	0	0	0	0
MEXICO	0	0	0	10	1	0	2	0	0	0	9	5	1	1	0	5	0	0	12	0
ALBERTA	0	0	0	0	0	0	0	0	0	0	0	0	0	1	0	0	1	0	0	0
BRITISH COLUMBIA	0	0	0	1	1	0	5	0	1	0	5	2	1	0	0	0	17	1	1	0
MANITOBA	0	0	0	0	0	0	0	0	0	0	0	0	0	0	0	0	0	0	0	0
NEW BRUNSWICK	0	0	0	0	0	0	0	0	0	0	0	0	0	0	0	0	0	0	0	0
NEWFOUNDLAND	0	0	0	0	0	0	0	0	0	0	0	0	0	0	0	0	0	0	0	0
NOVA SCOTIA	0	0	0	0	0	0	0	0	0	0	0	0	0	0	0	0	0	0	0	0
ONTARIO	0	0	0	0	0	0	0	0	0	0	2	0	0	1	0	0	0	0	0	0
PRINCE EDWARD IS.	0	0	0	0	0	0	0	0	0	0	0	0	0	0	0	0	0	0	0	0
QUEBEC	0	0	0	0	0	0	0	0	0	0	0	0	0	0	0	0	0	0	0	0
SASKATCHEWAN	0	0	0	0	0	0	0	0	0	0	0	0	0	0	0	0	0	0	0	0
NORTHWEST TERRITORY	0	0	0	0	0	0	0	0	0	0	0	0	0	0	0	0	0	0	0	0
YUKON TERRITORY	0	0	0	0	0	0	0	0	0	0	0	0	0	0	0	0	0	0	0	0
UNKNOWN	1	0	0	0	0	0	3	0	0	1	1	2	0	0	0	1	0	0	4	2
<b>** TOTAL **</b>	<b>90</b>	<b>11</b>	<b>74</b>	<b>76</b>	<b>40</b>	<b>16</b>	<b>1096</b>	<b>48</b>	<b>150</b>	<b>21</b>	<b>757</b>	<b>662</b>	<b>66</b>	<b>380</b>	<b>3</b>	<b>123</b>	<b>337</b>	<b>161</b>	<b>279</b>	<b>12</b>