

Washington State Toxicology Laboratory

Simulator Solution Data Entry Review Form

Reviewer KENNEDY / ROS GOURBERG Date 10-5-07
Location TOX LABS SEATTLE Batch Number 06012

Form Review Criteria

Preparation date precedes all analysis dates: Okay ___ Not Okay X

Data entry corresponds to all chromatograms: Okay X Not Okay ___

All signatures present: Okay X Not Okay ___

Computations:

Avg. solution concentration: Correct X Not Correct ___

Standard deviation: Correct X Not Correct ___

Range: Correct X Not Correct ___

Precision: Correct X Not Correct ___

Equivalent vapor concent.: Correct X Not Correct ___



External Control Information
(lot # and future date): Correct X Not Correct ___

Complies with accuracy and precision requirements established by the
State Toxicologist: Yes X No ___

Corrections Necessary:

DATE OF ANALYSIS FOR BRIAN C. LUDWIG ET

Comments:

Reviewer Signature: 
Reviewer Signature: 

Date: 10-5-07

Date: 10/5/2007

9/26/2007

Date 10/17/07 Exhibit # 58
Case WATSON, J. DOUG
Deponent
Reporter KATHLEEN M. MCKEE
Naegeli Reporting Corporation
7000 4TH AVE S.E. TACOMA, WA 98409

WASHINGTON STATE TOXICOLOGY LABORATORY
 FORENSIC LABORATORY SERVICES BUREAU
 WASHINGTON STATE PATROL
 2203 AIRPORT WAY S, SUITE 360
 SEATTLE, WASHINGTON 98134-2027
 (206) 262-6100 FAX (206) 262-6145

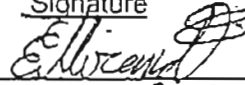
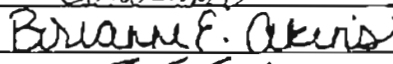
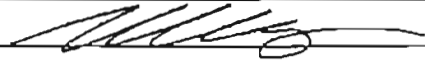
Preparation and certification of **0.10** g/210L Quality Assurance solution
 Batch number **06012** Date: 2/14/2006
 Preparation: 28.9 mL of absolute ethyl alcohol diluted to 18 Liters with water
 Concentration of ethanol (g/100mL) measured by gas chromatography:

	Anal 1	Anal 2	Anal 3	Anal 4	Anal 5	Anal 6	Anal 7	Anal 8	Anal 9	Anal 10	Anal 11	Anal 12	Anal 13	Anal 14	Anal 15	Anal 16
1	0.127	0.123	0.126													
2	0.128	0.127	0.127													
3	0.128	0.128	0.125													
4	0.128	0.126	0.125													
5	0.128	0.128	0.126													
Ctr)	0.100	0.100	0.099													

External Control:
 Lot #: A03592820 Exp date: 07/09
 Target concentration: 0.10 g/100mL

Statistics:
 Avg. solution concent.: 0.1267 g/100 mL
 SD: 0.00150
 Range (3xSD): 0.1222 to 0.1312
 Precision CV (%): 1.1808 %

Equivalent vapor concent.: 0.1030 g/210L

Analyst	Name	Signature	Date
1	Estuardo J. Miranda		02/15/2006
2	Brianne Akins		02/15/2006
3	Brian Capron		2-16-06 02/15/2006 ^{10.9.07}
4			
5			
6			
7			
8			
9			
10			
11			
12			
13			
14			
15			
16			

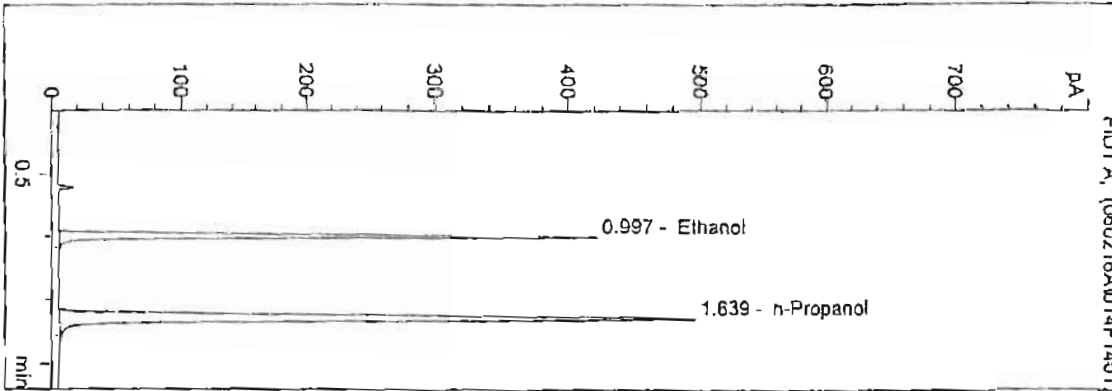
Prepared by: Estuardo J. Miranda according to the approved protocol

WASHINGTON STATE TOXICOLOGY LABORATORY

D:\HPCHEM\1\METHODS\BLDALCO.M
 2/16/2006 11:44:35 AM
 Instrument 4
 DB-ALC1

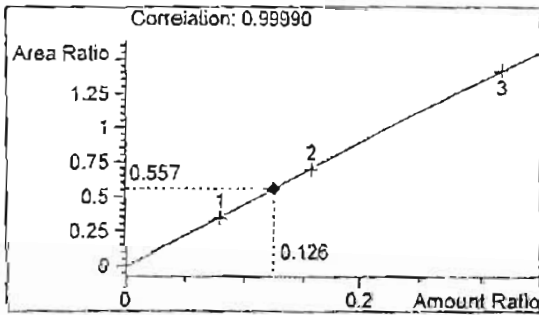
06012
 bcapron

vial # 14

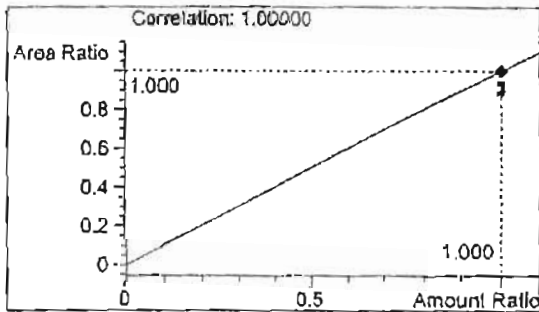


#	Compound	Area	RT
1	Ethanol	864	0.997
2	n-Propanol	1550	1.639

Totals:



Ethanol 0.126 g/100ml



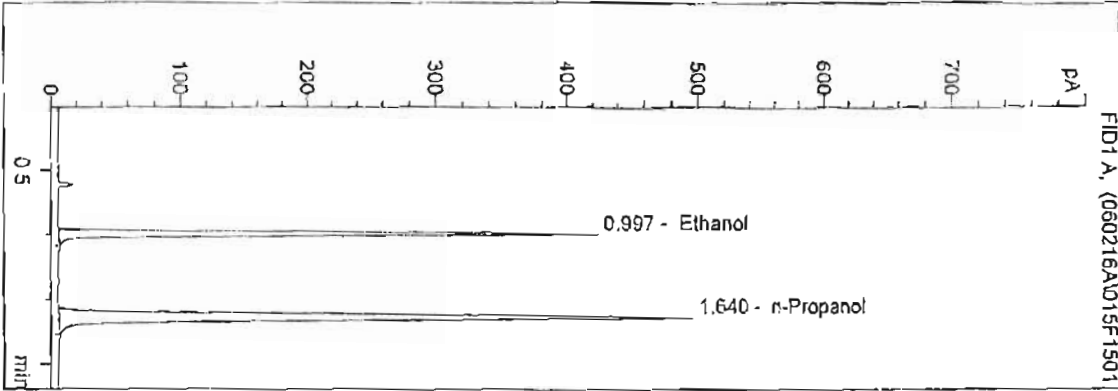
n-Propanol 1.000 g/100ml

WASHINGTON STATE TOXICOLOGY LABORATORY

D:\HPCHEM\1\METHODS\BLDALCO.M
 2/16/2006 11:47:52 AM
 Instrument 4
 DB-ALC1

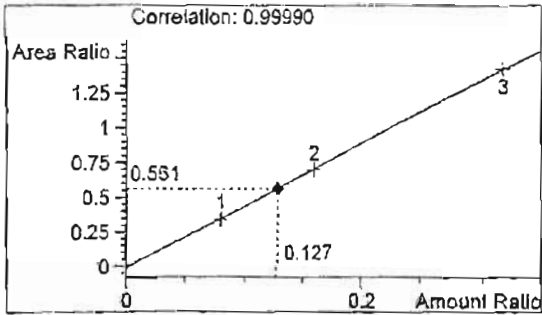
06012
 beapron

vial # 15

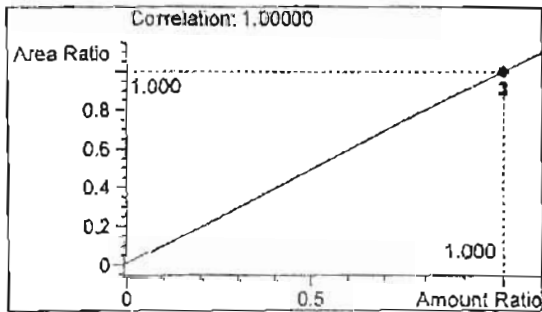


#	Compound	Area	RT
1	Ethanol	870	0.997
2	n-Propanol	1549	1.640

Totals:



Ethanol 0.127 g/100ml



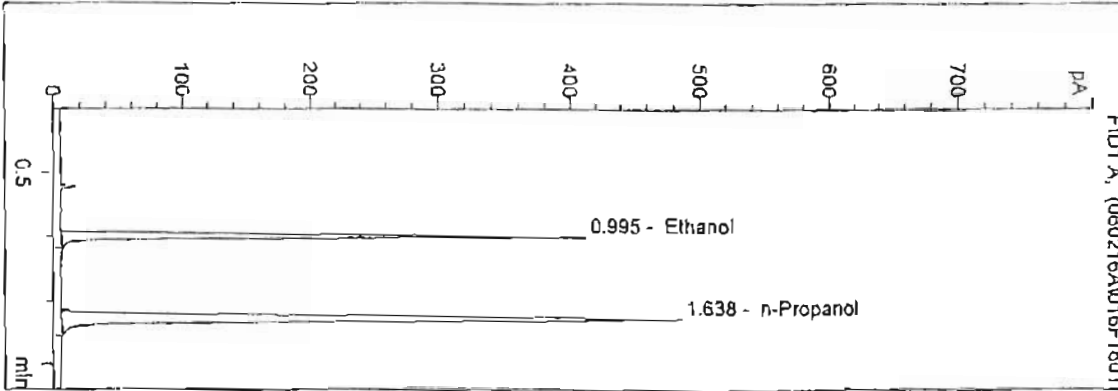
n-Propanol 1.000 g/100ml

WASHINGTON STATE TOXICOLOGY LABORATORY

D:\HPCHEM\1\METHODS\BI.DALCO.M
 2/16/2006 11:51:07 AM
 Instrument 4
 QB-ALC1

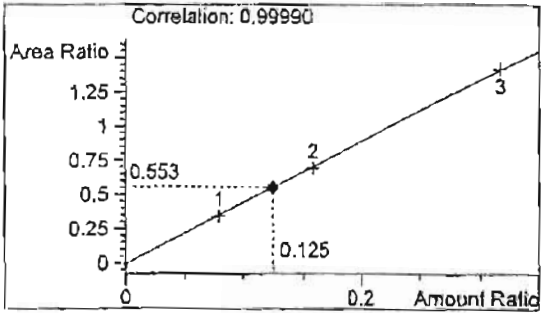
06012
 beapron

vial # 16

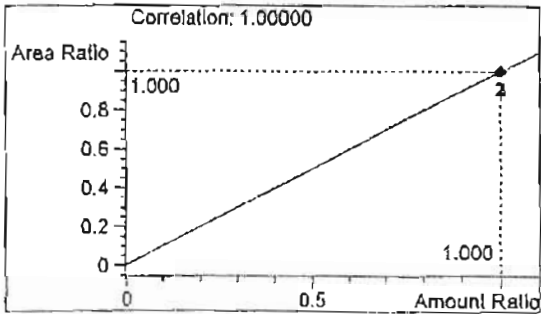


#	Compound	Area	RT
1	Ethanol	837	0.995
2	n-Propanol	1512	1.638

Totals:



Ethanol 0.125 g/100ml



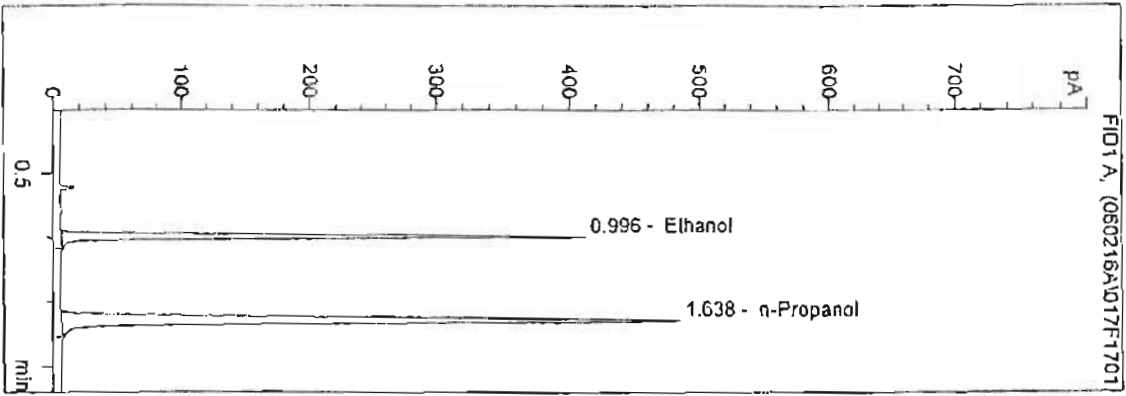
n-Propanol 1.000 g/100ml

WASHINGTON STATE TOXICOLOGY LABORATORY

D:\HPCHEM\1\METHODS\BLDALCO.M
 2/16/2006 11:54:22 AM
 Instrument 4
 DB-ALC1

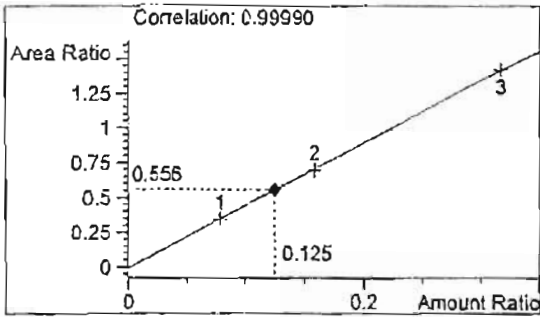
06012
 bcapron

vial # 17

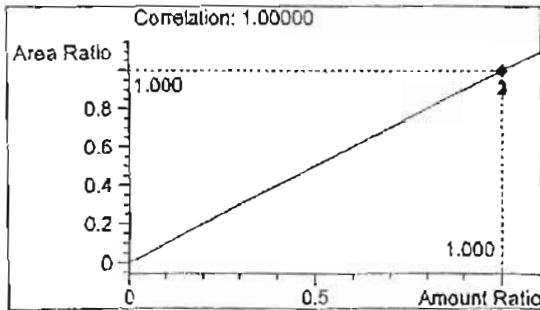


#	Compound	Area	RT
1	Ethanol	840	0.996
2	n-Propanol	1511	1.638

Totals:



Ethanol 0.125 g/100ml



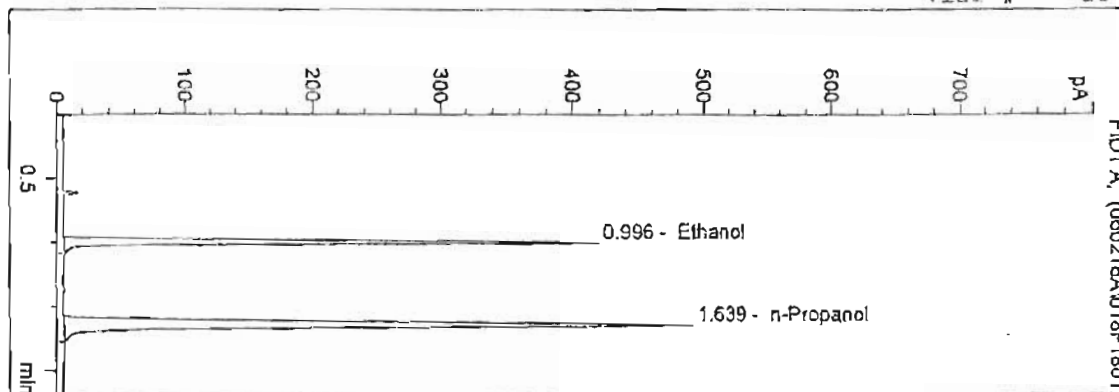
n-Propanol 1.000 g/100ml

WASHINGTON STATE TOXICOLOGY LABORATORY

D:\HPCHEM\1\METHODS\BLDALCO.M
 2/16/2006 11:57:40 AM
 Instrument: 4
 DB-ALC1

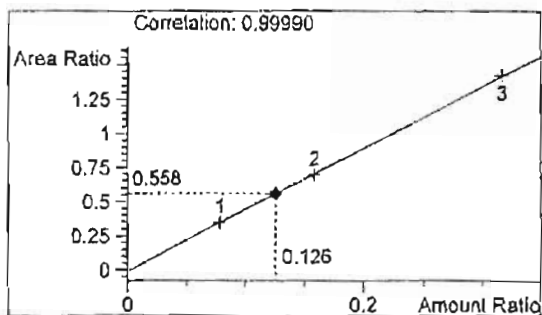
06012
 bcapron

vial # 18

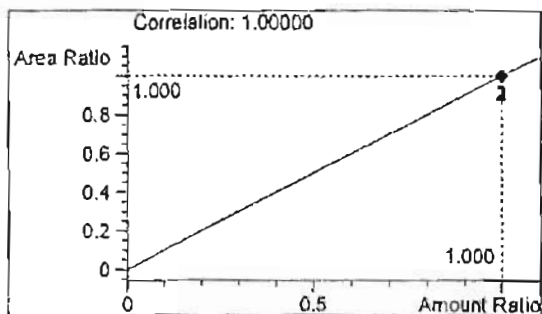


#	Compound	Area	RT
1	Ethanol	855	0.996
2	n-Propanol	1532	1.639

Totals:



Ethanol 0.126 g/100ml



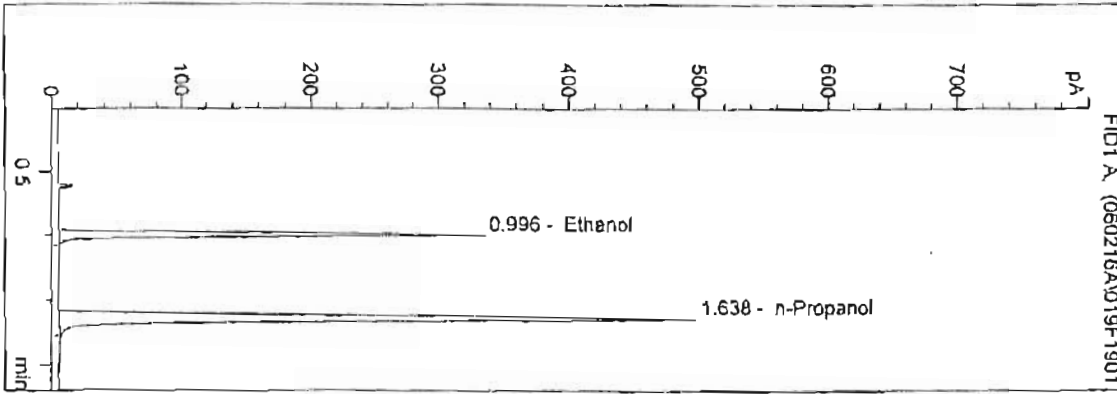
n-Propanol 1.000 g/100ml

WASHINGTON STATE TOXICOLOGY LABORATORY

D:\HPCHEM\1\METHODS\BLDALCO.M
 2/16/2006 12:00:57 PM
 Instrument 4
 DB-ALC1

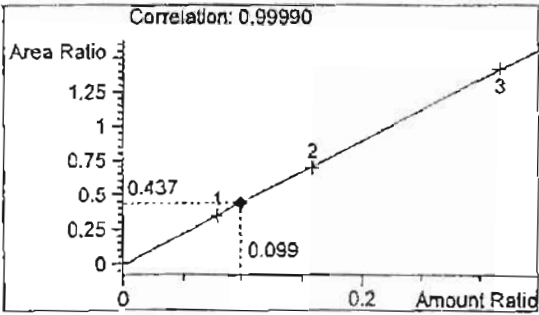
0.10 control bc
 bcapron

vial # 19

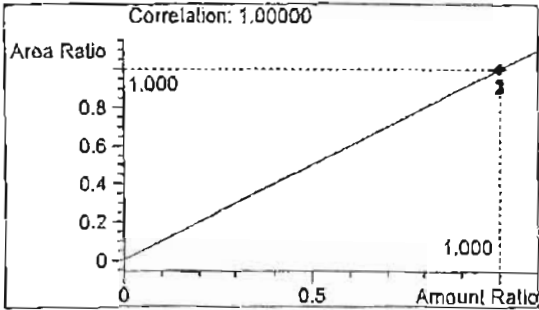


#	Compound	Area	RT
1	Ethanol	677	0.996
2	n-Propanol	1550	1.638

Totals:

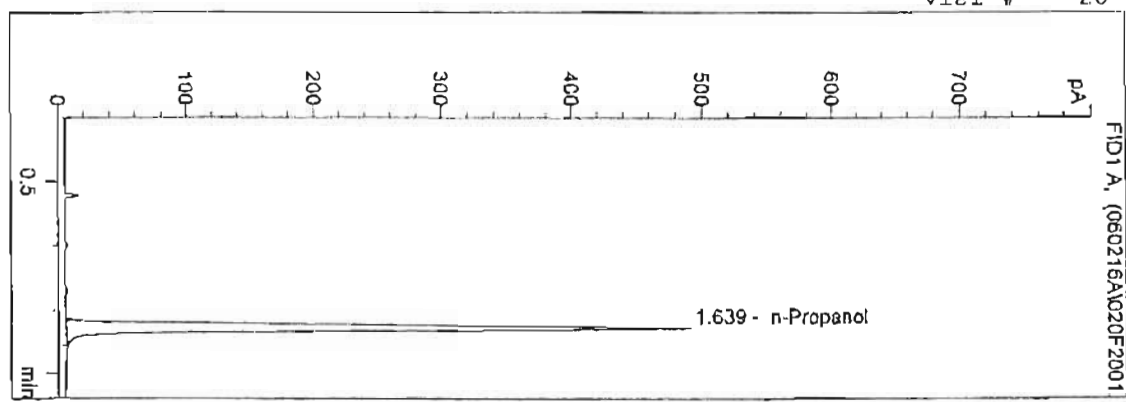


Ethanol 0.099 g/100ml



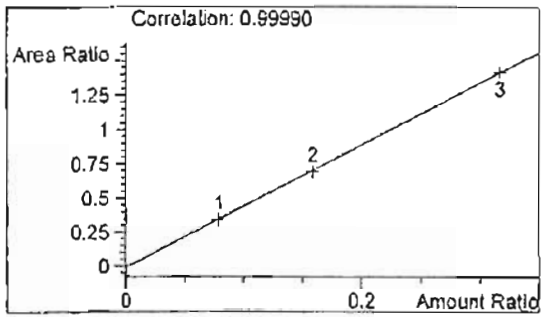
n-Propanol 1.000 g/100ml

vial # 20

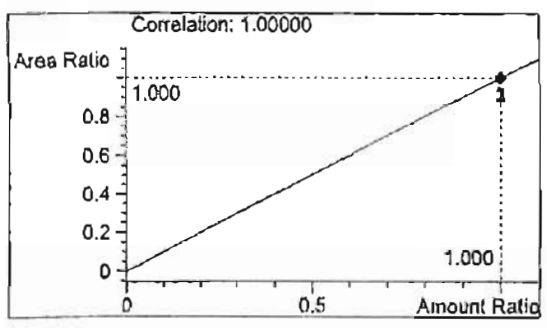


#	Compound	Area	RT
1	Ethanol	0	0.000
2	n-Propanol	1530	1.639

Totals:



Ethanol 0.000 g/100ml



n-Propanol 1.000 g/100ml